

McPhillips paces North win

Mercy conquers east side

By Chris McCosky
staff writer

North Farmington girls basketball coach Greg Grodzicki huddled with his team before sending them out for the start of the second half Thursday night against Farmington.

With chalkboard in hand, he sat down and diagramed a play.

His team went out and ran the play as diagramed — two points.

Grodzicki smiled.

It was that kind of night for the Raiders. They could do just about as they pleased in a 54-20 rout of their city rivals.

"We've been losing, and losing breeds disenchantment," Grodzicki said after the game. "We really needed this win to get more cohesive. We've been getting hammered by good teams. We had to get back to feeling good about ourselves."

ON THE OTHER side, first-year Farmington coach Diana Schwartz couldn't believe the team wearing blue and white was the same team that battled Livonia Churchill to the wire Tuesday night.

"We looked like we didn't have a clue out here tonight," Schwartz said. "We were so disorganized. Usually, we are at least semi-organized. Tonight, we were awful."

The Raiders established control of

the game in the first few minutes. Heather McPhillips scored three straight baskets inside. There was no stopping the 6-0 senior center the rest of the night.

McPhillips finished with a game-high 19 points. She sat out nearly half the game.

"It was just too easy for her to score," Schwartz said.

McPhillips wasn't the only Raider star. Nancy Cottrhan scored seven points and played a smooth floor game. Suzie Butcher, a sophomore, also scored seven points.

The Raider defense, a swarming man-to-man, pushed Farmington out away from the basket and allowed few offensive rebounds. It also forced 23 turnovers.

Farmington (0-11) made only five of 30 shots. The Falcons scored one field goal in the entire second half, none in the final quarter.

The Falcons played without the services of their top scorer, Stacy Swanderski.

Mary Kay Orrico led the Falcons with nine points.

North is now 5-5 on the season, 3-3 in the Western Lakes.

MERCY 48, GALLAGHER 36: Mission Harper Woods accomplished — convincingly.

Farmington Hills Mercy knocked off both its Catholic League rivals from the east side, Regina and Gallagher, on

their home turf. Ask any Catholic League coach, that's no easy task.

The key to beating Gallagher, home or away, is stopping 6-3 center Joan Rieger. Mercy did just that, limiting her to a season-low eight points.

"We did a super job on their big girls," Mercy coach Larry Baker. "We pressed successfully, full court, and played a collapsing zone on their big people. We forced Rieger out and double-teamed her."

Mercy got strong offensive performances from Terri Ford and Missy Duczynski, each scoring 11 points.

The Marlin (4-0 in the Catholic League, 8-2 overall) broke open a 24-20 game with a 13-4 spurt in the third quarter.

Gallagher is 2-3 in the league, 6-3 overall.

W.L. WESTERN 60, HARRISON 18: The losing streak has hit 50.

Farmington Harrison (0-11 on the season) fell behind 19-0 after a quarter.

Diane Hall led Western with 18 points.

LUTHERAN NORTHWEST 49, PLYM. CHRISTIAN 30: Farmington Hills Lutheran Northwest jumped on Plymouth Christian with a 20-5 surge in the first quarter Friday night and rode Heidi Abrahams 18 points to victory.

Deb Maul added 12 points for Northwest (7-3).

Becky LeBarre led Plymouth Christian (4-4) with nine points.

WESTERN LAKES GIRLS BASKETBALL STANDINGS	
LEAGUE DIVISION	
Plymouth Christian	4-0
West John Glenn	3-2
North Farmington	3-2
Livonia Churchill	2-3
Farmington	0-11
WESTERN DIVISION	
Plymouth Christian	7-1
Livonia Churchill	3-2
Livonia Franklin	3-2
West John Glenn	3-2
Farmington Harrison	0-11

Canton dumped

It may be the oldest sports axiom in the book: Take 'em one game at a time. Plymouth Canton ignored that Thursday night and consequently saw its 10-game winning streak snapped by Northville, 33-29, in a Western Lakes girls basketball game at Canton.

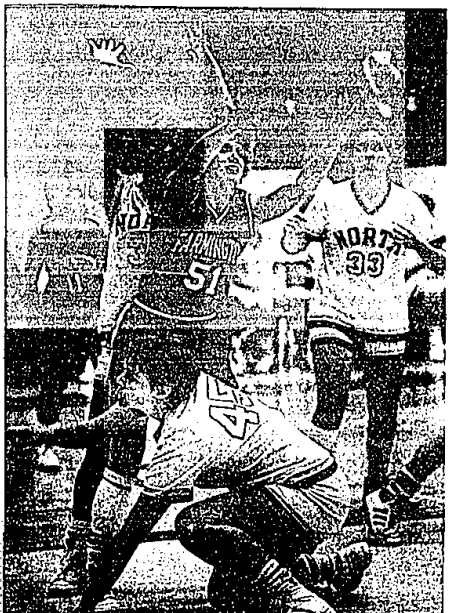
"Northville sat back in a zone and forced us to shoot from the perimeter," said Canton coach Rob Nien. "We were flat, and they came to play. We had great scoring opportunities, but the ball wouldn't go in."

Was the team looking ahead to Tuesday's showdown with Plymouth Salem?

"We prepared for the game, we just didn't play well," was Nien's first reaction. Then, "Yes, I'd say we were (looking ahead)."

Northville (3-5 in the league play) jumped to a 20-10 lead at halftime.

Sue Schrader led the Northville attack with 10 points.



Farmington's Patti Mathews (No. 51) is surrounded by North's Heather McPhillips (No. 45) and Sandy Spahn in the Falcons' loss Thursday.

John Glenn's Sommerman resigns as basketball coach

By C.J. Rissak
staff writer

George Sommerman was the only girls varsity basketball coach in the history of Westland John Glenn high school — until Thursday.

In a sudden development, Sommerman ended his tenure as coach following Glenn's 47-35 triumph over Northville Tuesday.

"I guess I'd have to say yes," said John Glenn athletic director Gerald Snukaitus when asked if Sommerman's announcement caught him by surprise. "He just submitted a brief letter of resignation."

Pat Bennett, the Rockets junior varsity coach, assumed the varsity coaching duties on an interim basis, Snukaitus said. Bennett was on the Glenn bench Thursday when the Rockets fell to Plymouth Salem 35-24.

Sommerman coached Glenn since the varsity girls program's inception. During his more than a decade of coaching, the Rockets won 70 percent of their games, compiling an 18-3 record last season and a 7-3 mark this year.

"It's been a lot of things, piling up over the years," Sommerman said in explaining his sudden

departure. "It was just a lot of little things. I've been shot at by parents a little bit, and I got kind of vicious."

"I tried to forgive and forget, but I kept remembering."

PARENTS OF SOME of the Glenn players apparently criticized Sommerman coaching after the Northville game Tuesday. Sommerman would not elaborate except to say that it "revolved around their not agreeing with what I was trying to do with the team. They thought I was a lousy coach, and they didn't like the way I handled the team."

"Really, they're very nice people, all of them," Sommerman insisted. "Even the parents who were on me are very nice. It really surprised me."

Sommerman insisted that Tuesday's confrontation was not the sole reason for his retirement, saying that "the frustrations kept piling up, piling up over the years."

Snukaitus said he did not try to convince Sommerman to reconsider his decision. "We felt he'd definitely made up his mind, that this is what would be best for him."

"I know he was under pressure from parents, that sort of thing. Every coach goes through it."

Ocelot spikers win 3rd straight

When you're good, you can afford to take a few chances. Schoolcraft College's volleyball team is good.

That's why the Ocelots lost a game in Friday's match at Flint Mott Community College. They won the first game 15-2, then lost the second 15-10 before rallying to win the next two games easily, 15-3, 15-6.

The win kept Schoolcraft perfect in league play at 4-0. The Ocelots are 19-5 overall.

On Tuesday, Schoolcraft crushed Delta in three straight games, 15-7, 15-11, 15-3, at Schoolcraft.

BUILDING FOR EXCELLENCE

STARTING AND MANAGING YOUR OWN SMALL BUSINESS

A CONFERENCE FOR VETERANS AND OTHERS

Pre-Business and 24 Advanced Workshops

October 26, 1985

Oakland Community College

Southeast Campus

Royal Oak

\$20 per person

Call 658-0895 for registration information

John PTA

save energy

When buying major appliances, such as a refrigerator or an air conditioner, do not make your choice on price alone but take into consideration the probable cost of running the device during its expected lifetime.

save energy

When buying major appliances, such as a refrigerator or an air conditioner, do not make your choice on price alone but take into consideration the probable cost of running the device during its expected lifetime.

ANXIOUS FOR SNOW?

UNLIMITED SKIING

1985-86 SEASON

EARLY BIRD SPECIAL!

\$129.00

per person

OFFER GOOD THRU OCTOBER 15, 1985

OCT. 16-NOV. 15, 1985: \$159.00

AFTER NOV. 16, 1985: \$189.00

pine knob ski resort

Clarkston, Michigan 48016 • (313) 625-0800

Available at Pine Knob, by mail and all Ticket World locations

ONLY 30 DAYS TIL SKIING

Bavarian Village

SKI SHOPS

SKI & SKIWEAR SALE

NOW THRU SUNDAY OCT. 27

10 to 30% OFF SELECTED MODELS OF NEW 1986 SKIS

OLIN-ROSSIGNOL-ELAN-K-2 PRE-DYNASTAR-HEXCEL

Plus \$100

"LET'S GO SKIING" BONUS FREE

WITH ALL ALPINE SKI MALCOLM-ROSS BIND WHILE SUPPLIES LAST

SKI PACKAGE SETS INCLUDING BOOTS:

ADULTS & TEENS RETAIL \$369 • SKIS • BOOTS • BINDINGS • POLES \$188	#404 SET SALE \$218 INCLUDING: • BINDING • SKIS • HEIERLING BOOTS • BINDINGS • POLES
#X-7 SPRINT SKI • ATLAS SKI BOOTS • MALCOLM-ROSS BIND • METRIC SKI POLES \$238	#435 SET SALE \$238 INCLUDING: • BINDING • SKIS • HEIERLING BOOTS • BINDINGS • POLES

NEW 1986 SKIWEAR COLLECTION

LOTS TO CHOOSE FROM MANY DIFFERENT STYLES SELECTED FROM OUR FRESH, NEW 1986 SKIWEAR COLLECTION FOR MEN, WOMEN AND KIDS. QUALITY JACKETS-BIBS-SWEATERS-PANTS, WARM AND RUGGED. OUR SELECTION IS FABULOUS.

SAVE 20% to 30% OFF

FREE NOV. '85 SKI PASS

FREE SKI PASS TO SKI MT. BRIGHTON ANY DAY IN NOVEMBER, WITH A PURCHASE AT ANY BAVARIAN VILLAGE SKI SHOP. THIS WEEK, WHILE SUPPLIES LAST.

BOOTS on SALE

NEW 1986 SKI BOOTS 10 to 30% OFF

SELECTED MODELS: NORDICA-LANGE HEIERLING-SALOMON-CABER

NORDICA #120 REAR ENTRY SKI BOOTS \$89

EARLY BUY BONUS COUPONS: NOT VALID ON SALE MERCH. VOID AFTER OCTOBER 20, 1985.

20% off ANY HARKENSKI SKI BACK	\$5 off ANY SKI BAG
\$5 off ANY ADULT SKI GOGGLE	\$3 off MASTER SKI LOCK
\$5 off SUNGLASSES RET. \$15 or more	\$3 off T-NECK
\$3 off ANY SKI HAT	\$5 off SKI GRABBER
	\$5 off BARRECAFTER

Bavarian Village

SKI SHOPS

ALCOFIELD HILLS: 2540 WOODWARD at Square Lake Rd. 333-2623

BIRMINGHAM: 101 TOWNSEND corner of Pierce 654-6552

CLYDEMAN: 14211 TELEGRAPH at the Jefferson Fwy. 554-6220

DECATUR: 1216 S. GATORT 16 mile north of I-16 MI. 778-7223

EAST DETROIT: 22301 KELLY between 0 and 3 MI. 778-7223

ANN ARBOR: 3336 WASHINGTON west of U.S. 73 773-9340

FLINT: 4281 MILLER across from Genesee Valley Mall. 312-733-2525

SUGAR LAKE: SKI AREA 18 miles N.W. of Trevelyan City 617-233-6753

FARMINGTON HILLS: 27847 ORCHARD at 12 MI. SCA-6689

VISA-MASTERCARD-DINERS-AMERICAN EXPRESS

OPEN EVERYWHERE TH. & FRI. SATURDAY 10-5:30 SUNDAY 12-5 P.M.