



Merrill Lynch Realty



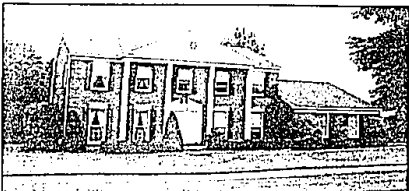
OPEN SUN. 4512 Middleton, N. of Lone Pine & E. of Middlebelt. Beautiful Quad-level in prestigious location, totally red-decorated on picture perfect lot of over 1 acre, all neutral decor with louver blinds. Secluded wooded yard with extensive decks. Quality throughout. 851-8100 \$174,900



OPEN SUN. 4810 Quanton, E. of Inkster, W. of Franklin. Ideal home for entertaining! Excellent Executive Colonial with neutral decor, microwave kitchen, wine cellar, rec room, central air, large screened porch, Walnut Lake privileges. 646-8000 \$169,900



OPEN SUN. 2957 Bloomfield Park Drive, S. of Lone Pine, W. of Middlebelt. Superb Contemporary with 6 bedrooms, 4 1/2 baths, library, stereo room, pool, security system, Bloomfield Hills Schools. 626-9100 \$329,900



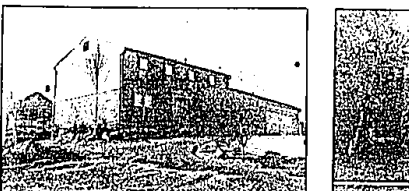
OPEN SUN. 930 Grant Oaks Boulevard, N. off Walton, E. of Livernois, across from Crichton Hospital. Superb golf course community offers spacious family colonial with formal dining room, first floor laundry, near schools and shops! 651-8850 \$124,900



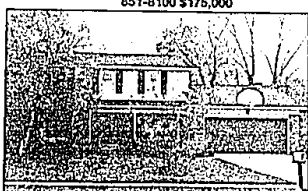
OPEN SUN. 7215 Creeks Bend, Pebble Creek Condominiums - N. of 14 Mile, W. of Orchard Lake. A must be seen show-place features superb design combined with meticulous appointments. Two story living area, circular stairs, master suite with sitting area and balcony, gourmet kitchen. 651-8100 \$175,000



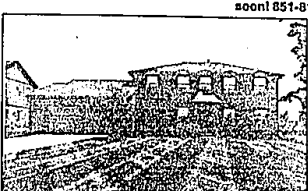
OPEN SUN. 5912 Seville Circle, W. of Orchard Lake, S. of Commerce. Spectacular LePays Subdivision presents ultimate Contemporary with access to Upper Struble Lake. Includes masterfully created extras, completely finished lower level, loads of glass, Jenn-air kitchen and more. Must be seen! 851-8100 \$269,000



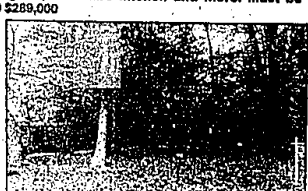
OPEN SUN. 25583 Bridlepath, E. of Halsted, S. of 11 Mile. Contemporary style Colonial boasts spectacular landscapes, unique gazebo, decking and more! 4 bedrooms, den, finished basement in hi-tech design. 626-9100 \$179,900



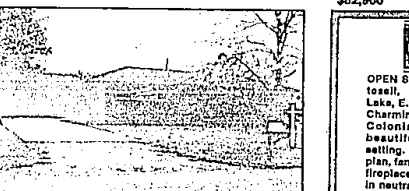
OPEN SUN. 20905 Andover, E. of Lahar, North off 14 Mile on Arlington Beacon Square Subdivision boasts fabulous Colonial with neutral tones includes 4 bedrooms, finished rec room, Berber carpet, lovely family room. Walk to Young Israel Synagogue. 646-6000 \$82,900



OPEN SAT. 6592 Glendale, N. of Square Lake, E. of Crooks. Private cul-de-sac location finds executive style Colonial with fresh decor, superb family room with fireplace, library, 4 bedrooms, central air and sprinkler. 689-8900 \$140,900



OPEN SUN. 31685 Franklin Fairway, N. off 13 Mile, E. of Northwestern. Elegant Custom Contemporary situated with wooded setting finds bright living areas, multiple bedrooms, family room, game room, quality throughout! 626-9100 \$295,000



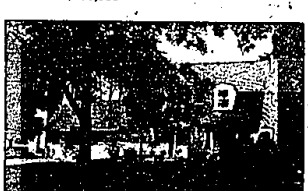
OPEN SUN. 547 Sylvanwood, N. of Long Lake, W. off Rochester. Lovely 4 bedroom Ranch on large country lot near golf course. Fireplaced living room, updated country kitchen with no-wax floors, private patio, more! 3 car garage. 689-8900 \$84,850



OPEN SUN. 4570 Whitwell, S. of Long Lake, E. of Rochester. Charming 4 bedroom Colonial features beautifully private setting. Superb floor plan, family room with fireplace, decorated in neutral tones. Walk to St. Anastasia. Just Listed - Won't Last! 689-8900 \$89,500



OPEN SUN. 710 Sylvanwood, N. of Long Lake, W. of Rochester. Just Listed! Outstanding maintenance offered in 4 bedroom home on large country lot close to golf course. 2 1/2 car garage, basement, central air. Must be seen! 689-8900 \$79,900



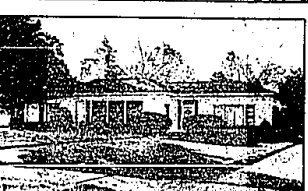
OPEN SUN. 1990 Northlawn, S. of Lincoln, E. off Cranbrook. Delightful Cape Cod overlooks fairways of Birmingham Country Club. Ready for new owners. Includes spacious living room with parquet floors. 646-6000 \$189,500



OPEN SUN. 3457 Wendover, N. of Big Beaver, E. of Adams. Immediate Occupancy in prime North Adams area includes large private lot, side entrance garage, Birmingham Schools. 646-6000 \$125,000



OPEN SAT. 2145 Moorgate, S. off Groer, E. of Hiller. Walk to Cass Lake beach from this charming Tri-level home with family room and wet bar, dramatic stone fireplace, private yard and patio, more! 851-8100 \$74,900



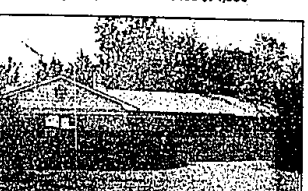
OPEN SUN. 31 Oakland Park Boulevard, S. of 10 Mile, W. off Woodward. Custom Ranch features open floor plan, fireplaced family room, library, 1st floor laundry and expansive window views of large private yard. 646-6000 \$89,500



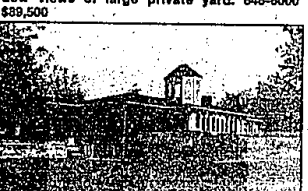
OPEN SUN. 32907 Friar Tuck, W. of Lahar, S. of 14 Mile. Executive Ranch in prime Beverly Hills boasts custom design, crown moldings, walk-in cedar closets, cherry paneled family room, Florida room, Birmingham Schools. 646-6000 \$239,500



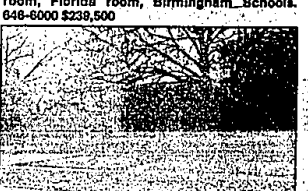
OPEN SUN. 6250 Malvern, S. of Square Lake, E. of Adams. Bloomfield Hills School! Lovely Ranch in Troy's Charnwood Hills includes 3 bedrooms, family room, fireplace, patio, excellent offering. 647-5100 \$97,500



OPEN SAT. & SUN. 4282 Snail Lane, 2 blocks S. of 25 Mile, W. of Shelby Road. Explore the country atmosphere of this custom ranch on premium park-like setting. 3 bedrooms, 2 1/2 baths, easy maintenance features, 1800 sq. ft. of decking, more. 651-8850 \$115,900



OPEN SUN. 420 Heron, N. of Rochester Road, E. of Snail. Left on Heron (private road). Spectacular custom Ranch offers glassed garden room, gallery, finished lower level, great room and more! Enjoy exquisite views! 651-8850 \$123,000



OPEN SUN. 1523 Earlmont, S. of 12 Mile, W. of Woodward. Near Shriners Parish, excellent 4 bedroom Cape Cod with library and den, 2 1/2 baths, brick exterior, deck, 2 car garage. Premium wooded setting. 689-8900 \$59,500

JUST LISTED

OPEN SUN. 4570 Whitwell, S. of Long Lake, E. of Rochester. Charming 4 bedroom Colonial features beautifully private setting. Superb floor plan, family room with fireplace, decorated in neutral tones. Walk to St. Anastasia. Just Listed - Won't Last! 689-8900 \$89,500

OPEN SUN. 710 Sylvanwood, N. of Long Lake, W. of Rochester. Just Listed! Outstanding maintenance offered in 4 bedroom home on large country lot close to golf course. 2 1/2 car garage, basement, central air. Must be seen! 689-8900 \$79,900

OPEN SUN. 35768 Frederickburg, N. of 12 Mile, W. of Drake Barrington. Green Sub. presents lovely Colonial with bay windowed dining room, custom moldings, upgraded carpeting, professional landscaping and much more. 626-9100 \$119,900

Merrill Lynch Realty

BIRMINGHAM
975 S. Hunter
at 14th Mile Rd.
646-6000

BLOOMFIELD HILLS
1520 N. Woodward
at Long Lake Rd.
647-5100

FARMINGTON HILLS
FRANKLIN
31000 Northwest Gateway
at 32 Mile Rd.
626-9100

TROY
11400 Northway
689-8900

ROCHESTER
30000 University
651-8850

WEST BLOOMFIELD
15000 Westpark
689-8900

OPEN MONDAY-FRIDAY 9 AM-5 PM SATURDAY 10 AM-5 PM SUNDAY 12 PM-5 PM