

**ONE OF A KIND GEM!**

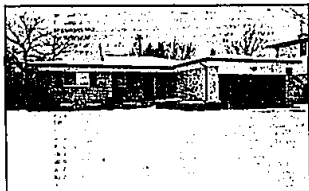
Unique contemporary home built to enjoy the serenity of lovely grounds. Living room is accented by a fireplace that sets in a graceful rounded column, library with built-in sofa, master suite with amazing closet space and gourmet kitchen. Even your own racquetball court! \$495,000. WIN-

**DREAMS COME TRUE**

Enjoy the serene beauty of woods from every room of this home. This house has it all - contemporary interior, cul-de-sac setting, unique marble foyer, oak woodwork, 1st floor master suite, central air, central vacuum, burglar alarm, solar heating and finished walk-out lower level. \$439,000. WAK-

**GRAND MASTERPIECE OF BEAUTY**

An octagon-shaped kitchen, 2 story planting area, double circular staircase in the spacious foyer, 5 fireplaces, wall-roof glass systems which "open up" 3 rooms to outside light all contribute to a special living experience. \$565,000. SYE-72268

**PRIDE OF OWNERSHIP**

Picture perfect 3 bedroom brick ranch with Great family neighborhood. Spacious family room with soaring fireplace, 2 full baths, finished recreation room and central air. The best of everything! \$85,500. CAA-36679

**NICE RANCH**

Situated on a beautiful lot in one of Birmingham's finest areas. Features such as family room, full basement, 3 bedrooms, central air, large airy updated kitchen, plus dining room are found in this newly listed home. \$126,900. PAE-

**ROLLING OAKS!**

Champagne Taste? Big and beautiful provincial Model nestled on private, picturesque wooded setting. Ceramic foyer, 4 bedrooms, dramatic all white formica kitchen with doorways to wood deck and woods. \$184,900. HHH-35831

**HANDSOME CONTEMPORARY**

Featuring ceramic 2 story foyer, cathedral ceiling and wet bar in family room, library, formica kitchen with Jenn-air. Master suite offers walk-in his and hers closets. All freshly decorated in neutrals plus docking and walk-out lower level. \$224,900. WOS-72247

**CONTEMPORARY MASTERPIECE**

Grand in scale, with nearly 6000 sq. ft. of living area. The creative use of angles, levels and vaulted spaces punctuate the airy and open character. Skylights, granite, marble, hand rubbed oak and other exquisite details! \$535,000. SYE-72883

# RALPH MANUEL

ASSOCIATES • REALTORS

1821 W. Maple, Birmingham

647-7100

32961 Middlebelt, Farmington Hills

851-6900

Toll Free 1-800-R-MANUEL



• MEMBER OF TRANSLO RELOCATION SERVICE •  
IF YOU ARE MOVING ACROSS THE CITY OR ACROSS  
THE COUNTRY, OUR RELOCATION DEPARTMENT CAN  
MAKE YOUR MOVE SMOOTHER.



## "1985 DESIGNER HOME"



This spectacular 4200 square foot French Colonial home offers the most innovative design and amenities. Featuring master bedroom and guest suites, 3 full and 2 half baths, cathedral ceilings, bay windows, a garden kitchen and wood decks. The price on the 1985 Designer Home is \$495,000 and is located in Bloomfield's most prestigious and newest area of Chestnut Run off Hickory Grove just south of Square Lake between Lahser and Telegraph.

For Sales Information Contact Robert Podoosky at 332-1443.

**A DESIRABLE DUPLEX**

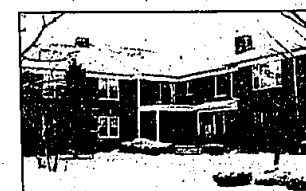
Deluxe brick duplex in good rental area in Ferndale. Each with 3 bedrooms, separate front and rear entrances, separate basements. Tenants pay own utilities. Newly listed at \$89,900. BRE-36537

**WEST BLOOMFIELD CONDO**

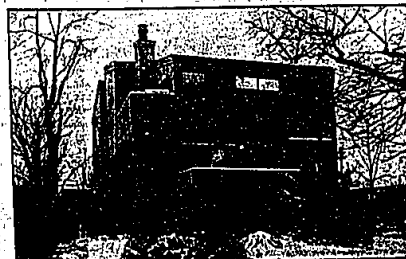
Ice skate in winter, watch the ducks in summer. Wonderful creek and pond views from many windows, 3 bedrooms, country kitchen, fireplace, and finished basement. \$96,500. POC-31673

**DOWNTOWN BIRMINGHAM**

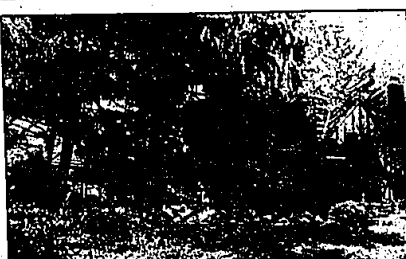
Tastefully decorated and quality is found everywhere in this 3 bedroom home. Features include new kitchen, baths, family room addition and multi-level decking. \$139,900. PUY-66624

**PRIME LOCATION**

Well kept, attractive and situated on beautiful grounds describes this 2 bedroom, 2 bath Farmington Condo. Neutral decor, lots of storage and close to shopping and transportation. \$89,900. ECO-74267

**DOWNTOWN BIRMINGHAM**

Is the location for these 2 Townhouses. Contemporary decor with track lighting, new carpeting, all appliances, including washer and dryer. Ample parking available. The best of 2 worlds - income and a contemporary living! Newly listed at \$250,000. LIN-

**OLD WORLD CHARM**

In this classic English Tudor on 1.8 rolling treed acres in Franklin Village. Enter sweeping drive to 300 ft. private road. Current 2 horse corral could be tennis court. Private studio over garage. Authentic architecture has been well maintained! \$265,000. WOE-75019