

# Cadillac features jet-age assembly

The 1987 two-seat ultra-luxury Cadillac Allante, the most exclusive motor car ever offered by an American automaker, will be produced on two continents linked by a 3,300 mile trans-Atlantic, Boeing 747F, traversed "airbridge."

Cadillac Motor Car general manager John Grettenberger announced the luxury car leader's innovative "Allante Airbridge" at a contract signing ceremony with Alitalia and Lufthansa airline executives at Detroit Metropolitan Airport.

The "Allante Airbridge" — a first for any production automobile — will commence in October 1986. Creating what Mr. Grettenberger described as "the world's longest automotive assembly line, Alitalia and Lufthansa will transport finished Allante bodies from Turin, Italy, to Detroit. The Allante will debut in the fall of 1986 as a 1987 model.

THE CADILLAC signing ceremony took place on board one of three 747 cargo carriers that will deliver an estimated 7,000 production Allantes to Detroit each year. It was attended by Alitalia chairman Dr. Umberto Nordio and Lufthansa executive vice president Dr. Franz Schoiber.

The two international airlines, Grettenberger said, will carry Allante bodies from the Turin headquarters of Italian coach-builder Pininfarina, designer of Cadillac's new two-seat convertible coupe. Sergio Pininfarina, president of Pininfarina, also attended the ceremony.

From Metropolitan Airport, Allante bodies will be delivered to General Motors new Detroit-Hamtramck Assembly Center where Allante's power train and



Alitalia and Lufthansa jets will transport Cadillac Allante bodies to the United States from Turin, Italy, and carry parts back to Italy.

chassis assembly will be completed.

One Alitalia and two Lufthansa aircrafts are dedicated exclusively to the Allante Airbridge, Grettenberger said. Each

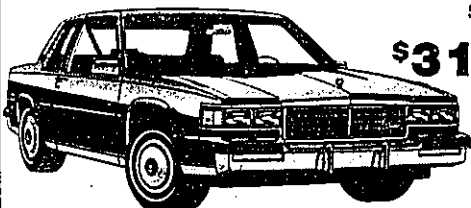
west-bound flight will carry 56 Allante bodies in 33 specially built cradles designed by Boeing, Alitalia and Lufthansa to maximize cargo capacity and ensure

damage free delivery. Return flights will carry GM-supplied or sourced components to Turin for Pininfarina use in assembling Allante bodies.

## YOU CAN AFFORD A CADILLAC...

...BECAUSE WE CAN TAILOR A CADILLAC TO YOUR FINANCIAL NEEDS

### 1986 COUPE DE VILLE



\$0 MONEY DOWN  
**\$316.93\***  
PER MO.

DARK BLUE, BLUE CLOTH,  
TILT, CRUISE, REAR DEFROSTER,  
CASSETTE, WIRES AND MORE! STOCK #168.

#### USED CAR SPECIAL - 12.99%

48 MONTHS ON SELECT PREVIOUSLY OWNED CADILLAC

\*10.9% FINANCING PLUS USE TAX & PLATES & 1st MONTH & SECURITY DEPOSIT. MULTIPLY YOUR MONTHLY PAYMENT WITH TERM OF LEASE WHICH EQUALS TOTAL NOTE OBLIGATION.

**CRISSMAN**  
*Cadillac*

1350 N. WOODWARD • BIRMINGHAM, MI 48011 • 644-1930

**FALVEY**

VOLKSWAGEN • SAAB • JAGUAR  
643-6900

### NEW '86 JETTAS

As Low As

**\$8370.00\***



### NEW '86 GOLFS

As Low As

**\$7190.00\***  
purchase



or LEASE FROM **\$99.99\*\***  
per mo.

\*Plus tax, license, dealer freight, prep and handling options.

\*\*60 month closed end lease, model #176292, \$924.79 down payment on trade equity, security deposit, first month payment due at time of lease.

40 years...Creating the Competition!!

**FALVEY**

**NO BEAVER**  
COODGE  
HAPLELAWN  
MAPE  
643-6900