



## photography

**Monte Nagler**

# Focusing on landscapes? Pay attention to the details

In many photographs the image consists primarily of a subject and a background and the technique of composition is creating a satisfactory balance between them.

With landscapes the image isn't so readily defined and more attention must be paid to color, tone and texture and the creation of harmony within these elements.

As with most photographs, a successful landscape picture still should have an identifiable center of attention supported by the other elements in the composition.

This center of interest could be

something quite obvious such as a distant farmhouse or a solitary tree. But often it's more subtle such as a certain area of pattern or texture or a color that stands out from the rest.

**PLACING THE emphasis** on one area of the picture gives structure to your composition and helps guide the viewer's eye which might otherwise wander about looking for something to settle upon.

Pay attention to the horizon line. A low horizon is used when you want to emphasize a dramatic sky and give a feeling of spaciousness to your shot.

A high horizon will draw attention to the foreground and will minimize an uninteresting sky. Can you ever place the horizon in the center of the viewfinder? Yes, if the image has an overall symmetrical quality that you want to emphasize.

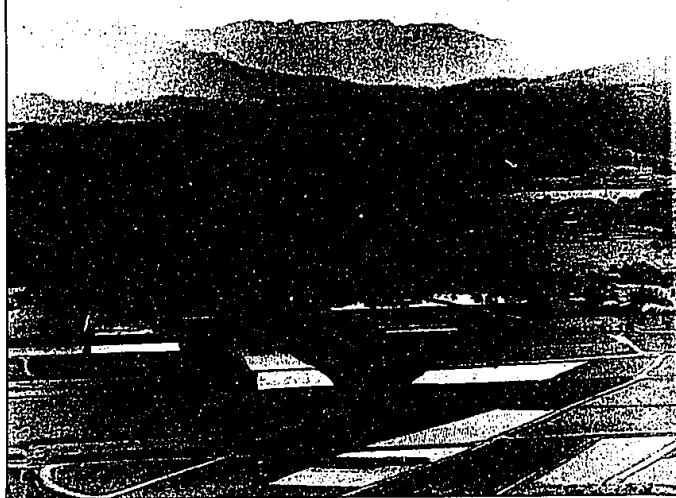
Often, lighting is the single most important element in a landscape picture. Be on the lookout for fog and mist that will add a romantic quality to your shot.

Sunbeams breaking through storm clouds are easily captured on film and will add exciting impact to your landscapes.

Time of day will have a dramatic effect on a landscape image. Try to shoot in early morning or late afternoon when shadows are enhanced and texture and form are accentuated.

**IF YOU DO**, your shot will be much more exciting than if you had shot under a noontime sun.

Become aware of color changes during the course of the day. Light quality



The center of interest in Monte Nagler's photo is the patchwork of taro plants, rice paddies and

sugar cane in Kaula's Hanalei Valley, Hawaii. All other elements play a supporting role.

## Short shots

• Monte Nagler's winter class series begins Tuesday, Jan. 21 at the Farmington Community Center. To register, call 477-8404.

• Nature Photography: Still-Life

Techniques and Landscapes" with instructor Alan Lowry will be held at Cranbrook Institute of Science, Bloomfield Hills 7-9 p.m. for four Thursdays beginning Jan. 23. For registration, call 645-3230 8:30 a.m. to 5 p.m. weekdays.

## Orchestra to give cabaret concert

The Pontiac-Oakland Symphony will present its annual Cabaret Concert at 8 p.m. Saturday, Jan. 25, in the Main Event at Pontiac Silverdome.

Guest conductor will be David Mairs, assistant conductor of the Flint Symphony Orchestra. Mairs has performed throughout the United States and Japan and was assistant principal horn with the Pittsburgh Symphony Orchestra.

Now an ordained minister, he is assistant pastor of the First Presbyterian Church of Flint. In addition to his service in the ministry, he continues to be involved in music not only with the

Flint Symphony, but in appearances with the Detroit Symphony Orchestra as well.

The Cabaret program will include selections from "Annie," "Chorus Line," "West Side Story," "South Pacific," "Sound of Music" and Morton Gould's "American Salute" and Aaron Copland's "Lincoln Portrait."

The evening will include light hors d'oeuvres and dancing to the music of "The Connection" with John Smith, conductor. Cash bar available. Tickets are \$20 per person. For reservations, call 334-6024.

**LIMITED 16 UNITS**

**EVERGREEN COMMONS**

Located in the prestigious village of Beverly Hills which offers Birmingham schools and mailing address

- 2 & 3 Bedrooms
- Attached garage
- 1st floor laundry
- Fireplace
- 2 1/2 baths
- Basements
- Bound insulated double dividing walls
- Private patio
- Air conditioning
- Fully landscaped

**Built by...**  
**MARCO BUILDING CO.**

**Sales by...**  
**Universal Realty**  
298-1577

**OPEN** Daily & Sun. 1-6  
Closed Thurs.

EVERGREEN

**MODEL**

13 MILERD.

↑  
N.  
↓  
SOUTHERN

Priced in 80's

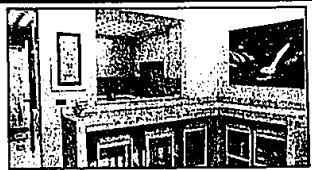
**Apple Grove**  
LUXURY CONDOMINIUMS

A unique development of only 14 detached ranch condo homes situated in Bloomfield Township. Apple Grove is for those who desire a matchless floor plan, a superb location, comfort and privacy. Model open daily and weekends 1-5, (closed Thursday).

Apple Grove is located North of Maple Road, just East of Inkster Road.

Sales by:  
**Chamberlain**

**Call DeDe Weinberg 851-2302 or 851-0248**  
(office) (model)



**IN-TOWN BIRMINGHAM CONDO**  
Super sharp condo on a private cul-de-sac has a marble foyer, and ails, custom gourmet kitchen, master bedroom with built-in storage, 2 burglar alarms and professionally landscaped terrace yard with brick patio. Quality. \$319,000. (H-75811).



**OPEN SUN. 2-5**  
**1158 ARDMORE, BIRMINGHAM**  
S. of Maple, E. of Lahar. Situated on a beautiful lot with many amenities is this sharp brick ranch with 3 bedrooms, 3 1/2 baths, great room with cathedral ceilings, hardwood parquet floors and loads of cabinets and closet space thru-out. \$289,500. (H-75813).

## Potomac Towne

**MILLCREEK BUILDING CO.**

Builder/Developer

**West Bloomfield**  
**North of Maple, West of Farmington**  
**Final Phase of New Construction!**  
**10 Townhouses/Condominiums**

### EXCITING NEW FLOOR PLAN!

2 bedrooms, 2 1/2 baths, fireplace, 2 car attached garage and basement. Large master bedroom and bath with dressing room, vanity, skylight and studio ceiling. Added features are fireplace in the master bedroom, whirlpool, tub, lucite bannister, mirrored closet doors, bar and special lighting. Starting at \$104,000. (H-75760).

Sales by

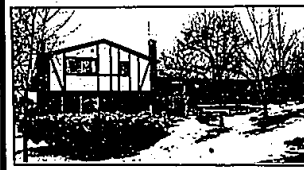
**Hannett, Inc.**

Realtors

**646-6200**



**BLOOMFIELD HILLS**  
**NEAR FOREST LAKE COUNTRY CLUB**  
Move in condition home has 4 bedrooms, 3 1/2 baths, family room with fireplace, cathedral ceilings in living room plus 2 huge decks and walk-out lower level patio. Alarm system, sprinkler system and more. \$205,000. (H-66355).



**FRANKLIN VILLAGE** - Tastefully decorated ranch has 4 bedrooms, 2 full baths, skylight, 2 fireplaces and glassed doors from the family room to the patio. Charm! Walk to town! \$134,900. (H-75330).



**Hannett, Inc. Realtors**

2523 w. maple at cranbrook **646-6200** birmingham, mi. 48009

MEMBER  
**ERC**  
EMPLOYEE  
RELOCATION  
COUNCIL

