

exhibitions

U-M DEARBORN LIBRARY

New acrylics on canvas by Peter Gilchrist Gooch and works of art given by Dr. and Mrs. Gary Burnstein and Dr. and Mrs. Michael Rubin of West Bloomfield. These include works by Miro, Cignoli, Picasso and glass by Bertil and Ullrica Vallter. Lipofsky and Littlejohn. Hours are 8 a.m. to 11 p.m. Monday-Thursday, until 6 p.m. Friday, 11 a.m. to 6 p.m. Saturday and 11 a.m. to 6 p.m. Sunday. Evergreen between Ford and Michigan, Dearborn.

PONTIAC ART CENTER

Friday, Jan 31 — "Black Women: Achievements Against the Odds" is a set of 20 posters from the Smithsonian Institution Traveling Exhibition. Also, in a tribute to Black History Month, there are photographs and paintings by Bill Sanders, Harold Allen and Yolanda Sharpe on display. Continues through Feb. 26. Hours are 9 a.m. to 5 p.m. Tuesday-Saturday, 47 Williams, Pontiac.

CADE GALLERY

Saturday, Feb. 1 — "The Artist as Jeweler" and "The Artist as Woodworker" continues through Feb. 19. Opening reception 4-8 p.m. Saturday. Hours are 10:30 a.m. to 7 p.m. Tuesday-Saturday, 214 W. Sixth, Royal Oak.

ROBERT L. KIDD ASSOCIATES GALLERY

Saturday, Feb. 1 — Group show includes works by Jun Kaneko, Joseph Raffack, Otto Duckert, Morris Graves and Harry Bertola. Continues through the month. Hours are 10:30 a.m. to 5:30 p.m., 107 Townsend, Birmingham.

HABATAT GALLERIES

Saturday, Feb. 1 — Works in glass by Klaus Noje, Damian Prior and Jack Schmidt are on display. Reception to meet the artists 8 p.m. Saturday. Hours are 10 a.m. to 6 p.m. Tuesday-Saturday, until 9 p.m. Friday, 28235 Southfield, Lathrup Village.

CRANBROOK ACADEMY OF ART MUSEUM

Tuesday, Feb. 4 — "Update: Detroit Artists" is more than 60 works by 18 emerging artists from the metropolitan area selected by Roy Slade, director. Slade said his intention was to show the diversity of works in the area. Museum hours are 1-5 p.m. Tuesday-Sunday. Admission charge, 500 Lone Pine, Bloomfield Hills.

FEIGENSON GALLERY

Saturday, Feb. 1 — Oil paintings and drawings by Ed Fraga continue through March 8. Reception 2-6 p.m. Saturday. Hours are 11 a.m. to 5 p.m. Tuesday-Saturday, Fisher Building, Detroit.

MEADOW BROOK ART GALLERY

Sunday, Feb. 2 — "Paint by Mr. Amos Ferguson," an exhibit of 49 paintings by native Bahamian Amos Ferguson continues through March 9. Movie at the gallery at 3 p.m. Sunday, "A New Spirit in Painting: Six Painters of the 1980s" requires reservations. Gallery hours are 1-5 p.m. Monday-Friday, 2-6:30 p.m. Saturday and Sunday and 7 p.m. through the first admission during theater performances, Oakland University, Rochester.

XOCHIPILLI GALLERY

Group exhibition continues through Feb. 22. Hours are 11 a.m. to 5 p.m. Tuesday-Saturday, 588 N. Woodward, Birmingham.

DETROIT INSTITUTE OF ARTS

Contemporary textiles by Mollie Fletcher continue in the Sales and Rental Gallery through Feb. 23. Hours are 10 a.m. to 5 p.m. Tuesday-Sunday, 1900 Woodward, Detroit.

NORGRAPHIC GALLERY

Mecanorma Letterhead exhibition of winners of the competition are on display through March, 28555 Northwest, Southfield. Hours are 9 a.m. to 5:30 p.m. Monday-Friday, 8 p.m. Saturday and 10 a.m. to 4 p.m. Sunday.

TOWN CENTER GALLERY

New works by Tobiasse plus works by gallery regulars Agam, Maxwell, Schurer, Nalkin, Tamayo and Rizzi. Hours are 11:45 a.m. to 5:30 p.m. Monday, 10 a.m. to 5:30 p.m. Tuesday-Friday, 3000 Town Center, Suite 45, Southfield.

COUNTY GALLERIA

Mixed media works by Detroit Society of Women Painters & Sculptors continues through Feb. 27. The exhibit is on both floors of the Executive Office Building, 1200 N. Telegraph, Pontiac. Open during regular business hours, Monday-Friday.

JEWISH COMMUNITY CENTER

Paper-cut sculpture and paintings by Lee Bleiweiss are on display through Feb. 9 at 6000 West Maple, West Bloomfield.

SUSANNE HILBERRY GALLERY

Show of works by Beatrice Wood, international master of luster ceramics. Continues through Feb. 22. Hours are 11 a.m. to 5 p.m. Tuesday-Saturday, 555 S. Woodward, Birmingham.

MARYGROVE COLLEGE GALLERY

Works by Sister Edith Kenny, Edce

Joppick, Charmaine Kaptir and Johanna Bielecki

are on display through Feb. 7 as a part of the continuing series of alumni exhibits, 8425 W. McNichols, Detroit.

PHYLLIS KRAUSE GALLERY

Among the art objects on display are 12th Century Khmer hands, antique ivory "doctor's lady," eagle dancer Kachina doll, masks from Japan and Burma, wood carvings from Naga, The Philippines, New Guinea, China and Korea. As well there's tribal jewelry, puppets from Burma and Thailand, Hmong stichery, kilim saddle bags, framed paper cutouts and stencils. Hours are 11 a.m. to 5 p.m. Tuesday-Saturday, 29 W. Lawrence, Pontiac.

EXPRESSIONS GALLERY

Prints and drawings by Kim Bauer and Therese Laatsch. Continues through Feb. 8. Hours are 11 a.m. to 5 p.m. Tuesday-Saturday, 269 North Main, Charleston, Plymouth.

DETROIT FOCUS GALLERY

"Constructions," a mixed media event, was juried by Sam Gilliam, leading American artist. Continues through Feb. 8. Hours are noon to 6 p.m. Wednesday-Saturday, 743 Beaubien, Detroit.

YAW GALLERY

Ceramics by John Donoghue, Craig Hinchshaw and Randall Mispa continue through Feb. 12. Hours are 11 a.m. to 5 p.m. Tuesday-Saturday, 550 N. Woodward, Birmingham.

DETROIT ARTISTS MARKET

Oil on canvas by Tom Parish and colored pencil drawings and oils by John Hegarty continue through Feb. 7. Both are members of the Wayne State fine arts faculty. Show of four young artists in the Upper Gallery, Jo Powers, Kathy Brackett, Lucho, Julio Peraza and Sandra Schenck. Hours are 11 a.m. to 5 p.m. Tuesday-Saturday, 1452 Randolph, Detroit.

PIERCE STREET GALLERY

"Quilted Reveries" by Francesca Lacagnina, begin with photographs that the artist takes, hand paints and adds to. Continues through February. Hours are 11 a.m. to 5 p.m. Wednesday-Saturday, 217 Pierce, Birmingham.

PAINT CREEK CENTER FOR THE ARTS

Works by students, graduates and instructor, Joe Zajak, are in the exhibit of ceramics from Wayne State University. Hours are 10 a.m. to 5 p.m. Tuesday-Saturday, 407 Pine, Rochester.

DETROIT GALLERY OF CONTEMPORARY CRAFTS

Crafts. Invitational features ten pots by 25 nationally known potters. John Glick and Michael Crumb are among the illustrious represented. Hours are 11 a.m. to 5 p.m. Monday-Saturday, 301 Fisher Building, Detroit.

TROY ART GALLERY

Group show includes paintings by Ross Arkell, Pat Boyer, Johanna Haas, Edce Joppick, Evelyn Raskin and Linda Zalla, ceramics by Carolyn Dulin, Jan Powers and Sharon Hubbard and Japanese woodblock prints. Hours are 11 a.m. to 5:30 p.m. Tuesday-Saturday, 755 W. Big Beaver, Troy.

RUBINER GALLERY

Group show includes Chicago artists Ellen Ferar, Dan Gustin, Irving Shapiro and Cameron Zabus and new works by Susan Tunick, Larry Zox, Fritz Mayhew, Richard Hogan and Niki de St. Phalle. Hours are 10 a.m. to 5:30 p.m. Tuesday-Friday, until 5 p.m. Saturday, 7001 Orchard Lake, West Bloomfield.

GALLERY BIRMINGHAM

Realistic still life oil paintings by John E. Karanack are on display.

STUDIO

This Birmingham artist/teacher has paintings on exhibit in this new space. Hours are 10 a.m. to 4 p.m. weekdays and 10 a.m. to 1 p.m. Saturday, 251 Merrill, Upper Level, Birmingham.

HALSTED GALLERY

Exhibit of photographs by Kurt Markus, born in Whitefish, Mont. The cowboy is his special interest. Hours are 10 a.m. to 5:30 p.m. Tuesday-Saturday, 560 N. Woodward, Birmingham.

ARTSPACE

Resale gallery for fine art has works by Johns, Dubuffet, DeKooning, Leger, Moore, Egner, Lindner and Pearlstein. Lois Pincus-Frank is in charge. Regular hours are 11 a.m. to 5:30 p.m. Tuesday-Saturday, 574 N. Woodward, Birmingham.

JOSEPH HUR GALLERY

This new gallery handles works by both international and local artists. It is artist-owned and operated. Hours are 10 a.m. to 8 p.m. Monday-Saturday, Orchard Mall, Maple and Orchard Lake roads, West Bloomfield.



Merrill Lynch Realty



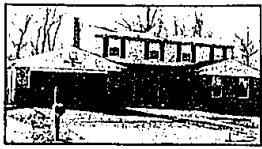
EXTRAORDINARY! Superb quality built Tudor using only the finest in construction qualities boasts 6 bedrooms, 4 fireplaces, walkout lower level, 4 car garage, ultimate in convenience, all nestled on spacious wooded setting in prime Orchard Lake Woodlands. 851-8100 \$594,000



ONE OF A KIND in Farmington Hills. This spacious front home is extra ordinary and sets on 5.4 acres with pond, trees ravine, coral and house stailal Open floor plan-jacuzzi, wet bar and unique 3 sided fireplace. Gorgeous living! 626-9100 \$319,900



MAGNIFICENT VIEWS of Walnut Lake from all levels. French Provincial design meticulously constructed to every detail. Two-story foyer with imported onyx flooring, plus bountiful amenities. Much more. 626-9100 \$695,000 (MKI)



IMMACULATE COLONIAL features wooded backyard, neutral decor, private master suite, large deck off family room and cozy fireplace. Comfortable living! 851-8100 \$132,900



BUILDER'S OWN CUSTOM ranch includes 20x40 Gunite pool with cabana, plus extensive decking, sauna, 5 bedrooms, beamed living room ceiling, spacious master suite, 2 fireplaces, 3+ car garage. 626-9100 \$187,500 (EFL)



SPECTACULAR COLONIAL in all neutral decor. Fabulous features 2 wet bars, super master bedroom with vaulted ceilings, greenhouse, attractive brick floor, quality carpeting and more! 851-8100 \$102,900



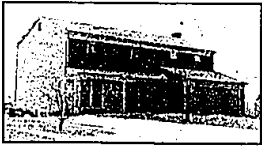
PRIVATE CUL-DE-SAC location built superb family home with bedrooms, den, special extras including alarm system, intercom, circular drive entry and gorgeous inground pool. 626-9100 \$111,000



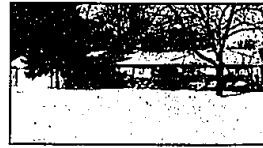
HOUSE OFFERS TONS of extras and built superb 4 bedroom colonial in West Bloomfield, circular staircase, central air, gazebo, jacuzzi and more. Community pool and clubhouse privileges! GREAT DEAL! 851-8100 \$124,900



MOVE RIGHT INTO this sharp colonial convenient to eat and shopping. Pegged oak flooring and beamed ceiling in family room, spacious entry, plus hardwood flooring, Farmington Hills Schools. 626-9100 \$124,900 (PFE)



SHARP 4 BEDROOM colonial in Farmington Hills with neutral carpeting offers formal dining, breakfast area, plus family room. Lovely patio and fenced yard, basement workshop with storage. 626-9100 \$104,500 (CFO)



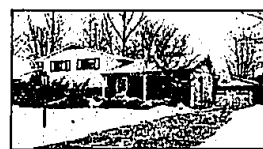
LAKE PRIVILEGES in beautiful West Bloomfield. Lovely ranch offers 2 way fireplace, 3 bedrooms, and screened in Florida room. Priced right! 851-8100 \$87,500



LOVELY TREED ACRE lot highlights Farmington Hills ranch with secluded inground pool. Parquet flooring in family room, fireplace living room, year round sun porch. 626-9100 \$88,900 (WFI)



GREAT STARTER HOME professionally decorated Cape Cod offers earth tone carpet, two full baths, spacious recreation room. All in sharp mint condition. Three bedrooms and more. Priced Right! 626-9100 \$31,900



CRANBROOK VILLAGE SUB sharp custom quad level with hardwood floors, earth tone carpeting, 4 bedrooms and natural fireplace. All set on delightfully landscaped lot. Affordable comfort! 826-9100 \$72,900



ENCHANTING HUNTINGTON WOODS home. Charming decor highlights this 4 bedroom 1 1/2 story home. Special features include Honduran Mahogany paneling in second floor study bay windows, attractive fireplace. A well cared for home! 626-9100 \$79,900

LIMITED 16 UNITS

EVERGREEN COMMONS

Located in the prestigious village of Beverly Hills which offers Birmingham schools and mailing address

- 2 & 3 Bedrooms
- Attached garage
- 1st floor laundry
- Fireplace
- 2 1/2 baths
- Basement
- Sound insulated double sliding walls
- Private patio
- Air conditioning
- Fully landscaped

Built by... **MARCO BUILDING CO.**

Sales by... **Universal Realty**

258-1577

OPEN Daily & Sun. 1-6 Closed Thurs.

Priced in 80's

MODEL 10 MILE RD. N. S. SOUTHWEST

Chelsea Place

LOCATION, LOCATION, LOCATION!!

The location of choice in Troy could be the reason for the success of Chelsea Place. Then again, it could be the insistence of quality materials and workmanship throughout the home. Stop by today to enjoy our beautiful Model.

Ranches and Coloniala from \$158,000

OPEN Daily & Weekends 1-6

Benecke & Krue Development Corporation

641-7709 642-8686

<p>BIRMINGHAM</p> <p>975 S. Hunter at Lone Lake Rd.</p> <p>646-6000</p>	<p>BLOOMFIELD HILLS</p> <p>1520 N. Woodward at Lone Lake Rd.</p> <p>647-5100</p>	<p>FARMINGTON HILLS FRANKLIN</p> <p>30540 Franklin at 12 Mile Rd.</p> <p>626-9100</p>	<p>TROY</p> <p>5017 Rochester Rd. at Lone Lake Rd.</p> <p>689-8900</p>	<p>ROCHESTER</p> <p>1200 W. University (at Woodbrook Plaza)</p> <p>651-8850</p>	<p>WEST BLOOMFIELD</p> <p>4315 Orchard Lake Rd. at Lone Pine Rd.</p> <p>851-8100</p>
--	---	--	---	--	---

OPEN MONDAY-FRIDAY 9 A.M.-7 P.M., SATURDAY 9 A.M.-5 P.M. OPEN SUNDAYS