

Growing pains

Hospital plans major expansion

By Joanne Maliszewski
staff writer

BY YEAR'S end, the long-planned \$13.6 million expansion of Botsford General Hospital in Farmington Hills is expected to be completed.

The more than 75,000-square-foot addition will provide badly needed space and increase the hospital's licensed bed capacity from 300 to 336, said William Scheuber, assistant administrator.

"The hospital has been short of space, especially supportive services. We are really cramped in some areas, especially in the public areas," said Peg Reihmer, vice president of planning.

Botsford's expansion includes three major components. The first is the addition of two floors to the hospital's south tower. The new floors will house 36 additional beds. The additional floors will allow hospital officials to free-up space on existing floors currently used for beds, Scheuber said.

"Not all the uses of the space have been totally defined at this point," he added.

A SECOND component is expansion of the hospital's front lobby. Expansion here will include a six-level tower between the existing hospital front and the professional building. A new lower level (basement) will be built as well as six stories above ground. This addition will house expanded surgical facilities, larger storage areas and an expanded cafeteria.

The first floor will feature a new lobby,

chapel (donated by the Botsford Guild) and an expanded gift shop. Three new elevators will be provided and separate visitors from patient and service traffic.

The new floors above the former lobby will provide additional space for support services, such as day rooms, classrooms, family visiting rooms, doctor-patient conference rooms, nurses' lounges and lockers, as well as offices, Scheuber said.

As health care has changed, so have the space needs of a hospital. New types of medical procedures have brought more sophisticated equipment — needing additional space — to hospitals, Reihmer said.

Changing trends also demand that a hospital environment is more comfortable than has been in the past. Hospital patients generally are sicker than in the past mostly because many procedures today can be done on an out-patient basis rather than having to admit a patient. Patients today have high expectations of what their hospital care should be, he said.

THE FINAL component is the expansion of the existing boiler plant on the hospital's northwest side. While existing parking areas are adequate to accommodate the hospital's expansion, some of it will be rearranged.

The most controversial part of the expansion has been the addition of the fourth and fifth floors on the hospital's south tower.

Delays in planning occurred when Botsford officials had to acquire a special purpose zoning amendment from

the Farmington Hills City Council in order to extend the south tower to a maximum 85 feet — more than 20 feet taller than current zoning allows.

"It does conform with the ordinance. No part of the new construction will be higher than what exists right now," Scheuber said.

The care of the 36 additional patients generated by the expansion will provide a still undetermined number of new jobs. The specific number of jobs that would be available depends in large measure on whether the state will permit hospital officials to begin new programs at Botsford, Reihmer said.

QUALIFIED EMPLOYEES among the approximately 100 laid off by the hospital in March 1984 would be considered first for the new positions although most have either been rehired or have found new jobs elsewhere, Reihmer said.

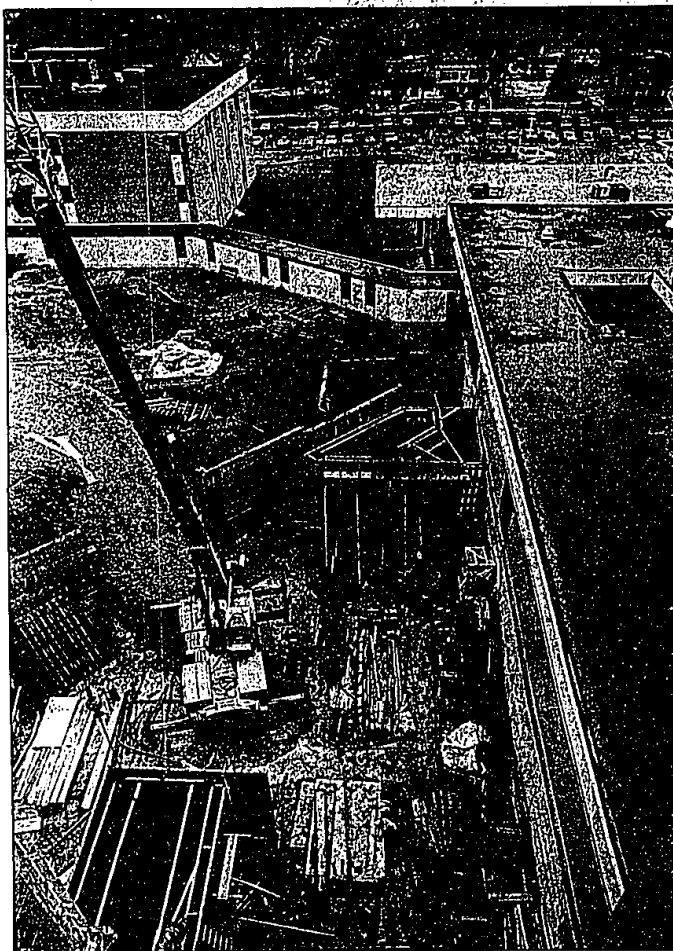
Botsford's expansion stemmed from the need for additional space plus officials' desire to develop new programs. But the state had mandated a reduction in the number of excess hospital beds, Reihmer said.

"We thought we couldn't likely expand the number of beds," she added.

Botsford, though, was able to increase its number of beds by purchasing a smaller, 146-bed hospital targeted for closure.

"We bought it through the bankruptcy courts and closed it," Reihmer said.

By closing the smaller hospital, Botsford was able to increase its number of beds.



A view of the new six-level tower construction, extending south from the former front of Botsford General Hospital.

RANDY BORST/staff photographer



AT RIGHT: An architectural drawing of the \$13.6-million expansion of Botsford General Hospital. The addition, covering 75,000 square feet, will increase the Farmington Hills hospital's licensed bed capacity from 300 to 336, said William Scheuber, assistant administrator.

obituaries

MARY J. SCHWARTZ

Mrs. Schwartz, 80, of Austin, Texas, died Jan. 21 in Four Seasons Nursing Home, Austin, Texas.

Born in Germany, Mrs. Schwartz worked for a production company.

Survivors include her daughter, Bernadine Fluegge; sister, Mary Burkhardt; four grandchildren.

Services were Jan. 25 at the Heehey-Sundquist Funeral Home, Farmington, Mass. was celebrated at Our Lady of Sorrows Catholic Church with the Rev. Kean Cronin officiating. Burial was in Holy Sepulchre Cemetery, Southfield.

FRANK B. TARTER

Mr. Tarter, 77, of Farmington Hills died Jan. 24 in St. Mary Hospital, Livonia.

Born in Oklahoma, Mr. Tarter was an engineer in the automotive field. He retired from Ford Motor Co. after 44 years of service. For 12 years he worked as consultant for Dunnage Engineering of Brighton.

Survivors include his daughter, Billie Croll; three brothers and one sister; three grandchildren and one great-grandchild.

Services were Jan. 27 at the McCabe Funeral Home, Farmington Hills, with the Rev. William A. Ritter officiating. Burial was in Oakland Hills Cemetery, Novi.

MARGARET A. GRAY

Mrs. Gray, 58, of Farmington Hills died Feb. 3 in Botsford Hospital, Farmington Hills.

Mrs. Gray was a secretary in the public school system.

Survivors include her husband, George; son, Gregory; a daughter, Lori Stofflett; sister, Mary O'droyd and Jean Zavitz; brother, Robert Walker.

Services were Feb. 5 at the Heehey-Sundquist Funeral Home, Farmington, with the Rev. David Strode of Nardin Park United Methodist Church officiating. Burial was in Inlay Township Cemetery, Inlay Township, Mich.

KIMBERLY SUE KILMER

Miss Kilmer, 32, of Farmington Hills died Jan. 22 in San Francisco, Calif.

Miss Kilmer was a nuclear therapist. Survivors include her parents, Juno and Joe Kilmer; sister, Cheryl; brothers, Craig, Bruce and Keith; grandmother, Thelma Dollar.

Services were Jan. 28 at the McCabe Funeral Home, Farmington Hills, with the Rev. Paul Blumquist officiating. Burial was in White Chapel Cemetery, Troy.

on the agenda

Farmington Hills City Council
Council Chambers
31555 11 Mile, Farmington Hills
7:30 p.m. Monday, Feb. 10

The Farmington Hills City Council will consider a request from the Farmington Community Library for additional professional staff, an agreement with Farmington Public Schools concerning elections, as well as authorization to purchase a voters registration software system. Council will also consider entering into a tri-party road agreement with the Oakland County Road Commission. Also to be considered is the sale of property at Drake and Freedom Road to the Baptist Manor. Council will consider approval of a planned residential district site plan for cluster and multiple housing on the south side of Nine Mile, between Gill and Green Hills Commons subdivision. A request from the Dell of Mulwood Square for a resort class C license will be considered.

Farmington Public Schools
Lewis B. Shultman Administrative Center
32500 Shlawassee, Farmington
8 p.m. Tuesday, Feb. 11

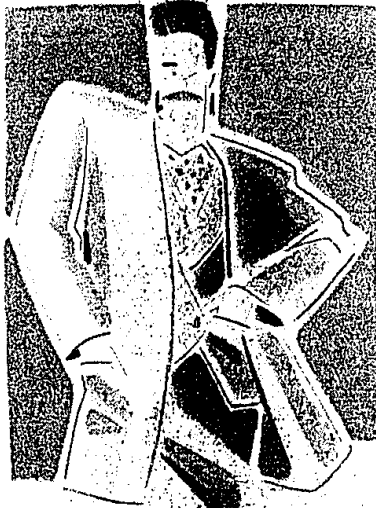
The board of education will meet in closed ses-

sion at 7 p.m. prior to the regular 8 p.m. meeting. On the agenda for the regular meeting is board discussion of the Tax Increment Financing Authority (TIFA) district proposed along 12 Mile, west of Farmington Road, by the city of Farmington Hills. The school board has taken a stand against the proposed TIFA district. Also to be heard by the board is a district MEAP (Michigan Education Assessment Program) report on district scores.

Farmington Hills Planning Commission
Council Chambers
31555 11 Mile, Farmington Hills
7:30 p.m. Thursday, Feb. 13

The Farmington Hills Planning Commission will consider the following zoning requests: 1)A three-way split on the north side of 10 Mile, east of Orchard Lake; 2)Addition of a dining room, parking and drive-through for Taco Bell at 38330 10 Mile, west of Grand River; 3)Two-way split at 29176 Eldon, between Middlebelt and Candfield; 4)RA-1 to RC-2 on the east side of Orchard Lake, south of 11 Mile; 5)RA-2 to OS-4 on the east side of Haggerty, north of Nine Mile; 6)RA-2 to OS-4 on Haggerty, south of Nine Mile; 7)A-1 to RP-1 on 12 Mile, between Haggerty and Field; 8)Automotive repair in B-3 at 20755, 20785 and 20776 Orchard Lake.

ESCADA INTRODUCING THE ESCADA
SPRING COLLECTION. TUESDAY, FEBRUARY 11, IN THE NORTHLAND OVAL ROOM AND
WEDNESDAY, FEBRUARY 12, IN THE EASTLAND OVAL ROOM. INFORMAL MODELING FROM 12 TO 6.



HUDSON'S
OVAL ROOM