

ART EMANUELE/staff photographer

Michigan Week harbingers

Well-known wildlife artist Bill Thompson of Livonia will have 50 of his illustrations on display at the Michigan World Organization of China Painters exhibit and sale this weekend in the Birmingham Masonic Temple, 357 Woodward, north of Big Green/Quarton Road, Bloomfield Hills. The show is titled "A Garden on Painted Porcelain." The author of four books and the editor of three monthly

publications, Thompson will display 8-by-10-inch tiles painted with state birds and flowers. The display coincides with the observance of Michigan Week, which will begin next week. Highlight of the exhibit will be continuous demonstrations by the artists, notably Joan Haber of Kansas. Show hours are 9:30 a.m. to 9 p.m. Friday and 9 a.m. to 4 p.m. Saturday.

Cranbrook Kingswood senior Michael Sandoval of Bloomfield Hills is the winner of the 1988 Le Gala de Cuisine poster contest sponsored by Grafiskas of Birmingham.

Sandoval's portrayal of a roly-poly chef carrying a huge fork and running amidst a red swirl placed number one in a field of more than 50 entries. In addition to the publication of his poster, he will receive \$100 in cash and a framed poster.

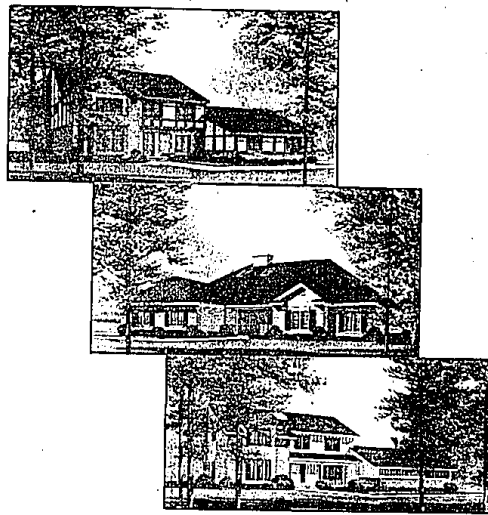
Second place went to Cranbrook Kingswood sophomore Daniel Lee and

Kingswood Middle student Elizabeth Bedner, won third. They will receive \$50.

Grafiskas owners Norma Melton and Cathy Ambrose, who selected the winning entry, will reproduce the posters and distribute them at the Gala as an artistic memento of the annual gourmet feast. Cranbrook Kingswood art department head, Mary Jo Macey, acted as student advisor.

Student wins competition

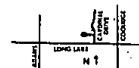
Chelsea Place



LOCATION, LOCATION, LOCATION!!

The location of choice in Troy could be the reason for the success of Chelsea Place. Then again, it could be the insistence of quality materials and workmanship throughout the home. Stop by today to enjoy our beautiful Model.

OPEN
Daily & Weekends
1-6



Ranches and Colonials
from \$175,000



Benecke & Krue
Development Corporation

641-7709

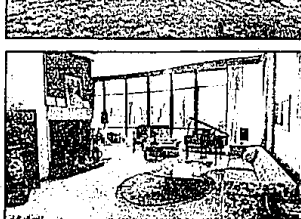
642-8686



CLASSIC COUNTRY FARMHOUSE REMODELED WITH SOPHISTICATION has beautiful, new quality kitchen and breakfast room highlighted with relaxing view of the pond, cozy two-way fireplace adjoining family room. Decking with hot tub off master bedroom and family room. Added bonus is upstairs gymnasium at the end of house. So many amenities and extra parcels of land make this one to call on right away! \$365,000 (H-81412)



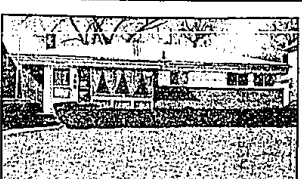
IMPRESSIVE BLOOMFIELD HILLS CONTEMPORARY quality home on almost 9.5 acres of rolling property took WALLACE FROST 5 years to complete. Vaulted 14' ceilings afford panoramic view of magnificent property and of peaceful ORANGE LAKE. This 5 bedroom home, with unique features such as indoor spa/exercise pool, studio, sauna, wine cellar, 6 fireplaces, and more make this property outstanding. \$1,650,000 (H-81877)



OPEN SUNDAY 1 to 5, 4500 Dow Ridge, Orchard Lake (North of Commerce and West of Indian Trail). **PERFECT HOME FOR SUMMER FUN AND ENTERTAINING...Outstanding CONTEMPORARY ON CASS LAKE** with indoor pool, hot tub, sauna, 3-4 bedrooms, 5 baths, and so much more! **MOTIVATED SELLER** makes this a great opportunity and one to see! \$455,000 (H-77966)



IMMACULATE BLOOMFIELD VILLAGE center entrance colonial has 4 bedrooms, 2 1/2 baths, quality kitchen cabinets and a sunny family room. Sharp home has central air and new alarm system. \$279,000 (H-78234)



OPEN SUNDAY 1 to 5, 155 Catalpa, Birmingham (South of Lincoln and East of Pierce). **BIRMINGHAM IN-TOWN RANCH** features 3 bedrooms, 1 1/2 baths, 2 car garage. Charming country decor with family room overlooking well-maintained fenced backyard. Not a drive by! \$112,000 (H-80642)



NATURAL WOODED RAVINE setting highlights this custom-built brick raised ranch in lovely family area of FARMINGTON HILLS. Features include 4 bedrooms, large living room, family room with natural stone fireplace, Jenn-Air kitchen with skylight. Peaceful wooded area with wildflowers! \$154,900 (H-81183)



VICTORIAN HISTORIC HOME located in DOWNTOWN BIRMINGHAM built around 1900 with high-beamed ceilings and original hardwood floors. Living room with fireplace and bay window with leaded glass sliding door opening to gracious dining room. So many wonderful features and so much charm! \$325,000 (H-81214)



Hannett, Inc. Realtors

2523 w. maple at cranbrook 646-6200 birmingham, mi. 48009

MEMBER
ERC
EMPLOYEE
RELOCATION
COUNCIL

