



Merrill Lynch Realty

22 Reasons to Buy Now—Many Open 2-5



OPEN SAT. 2-5 p.m. 32322 Scenic Lane, N. of 13 Mile, E. of Inkster. Superb custom Colonial on wooded lot in the desirable Village of Franklin. Gourmet kitchen, library, 5 bedrooms, 4 1/2 baths. 851-8100 \$289,900 (SWC)



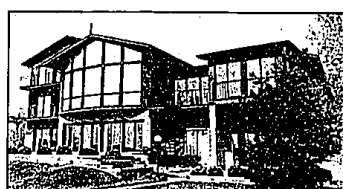
OPEN SAT. & SUN. 11-6. 501-541 Brookside E. side of Woodward between Oak and Park. SOPHISTICATED CONDOMINIUMS just a walk from Birmingham. Beautifully landscaped, view of river, marble foyer, woodburning fireplace, private balconies and much more. Luxurious! 648-6000 From \$285,000.



OPEN SUN. 35903 Howard S. of 12 Mile, W. of Drake. UNIQUE RANCH. Farmington Hills boasts extraordinary 5.4 acre setting with private pond, tree ravine and corral with horse stalls. Fabulous features, unique fireplace and more! 626-9100 \$289,900



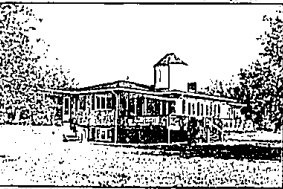
SPARKLING CONTEMPORARY in gorgeous Wakeek! Finest quality and numerous amenities. Open floor plan, sauna, skylit white gourmet kitchen, exercise room, walk-out pool and overall flair! 626-9100 \$535,000



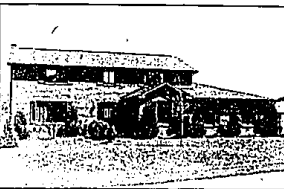
OPEN SUN. 2-5 p.m. 4713 Wendrick, S. of Lone Pine, E. of Middlebelt. Magnificent Walnut Lakefront home features Great Room with vast window views of lake. Supremely executed Contemporary. 646-6000 \$589,000 (WBE)



OPEN SUN. 2-5. 23155 Valley Crest, W. of Bell, S. of 12 Mile. ENTERTAIN in Ultimate custom Contemporary. Stunning glass great room, private wooded ravine, jacuzzi and gourmet kitchen. 626-9100 \$259,000



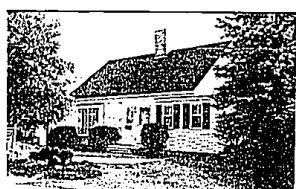
OPEN SUN. 4200 Heron, N. of Rochester Road, E. on Snell, Left on Heron (private road). Spectacular custom Ranch offers glassed garden room, gallery, finished lower level, great room and more! Enjoy exquisite views! 651-8850 \$166,000



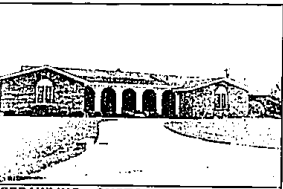
OPEN SAT. 30824 Turtle Creek, S. of 14 Mile, W. of Drake. PRESTIGIOUS RAMBLEWOOD! Exciting Colonial offers very open floor plan with ultimate decking and views. Center island kitchen, 4 bedrooms, library. Clever gazebo. 851-8100 \$209,900



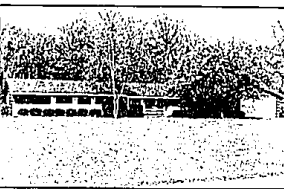
OPEN SUN. 4750 Charring Cross E. of Woodward, N. of Quanton. MAGNIFICENT setting for raised ranch on 2.5 acres in Bloomfield. Extremely private setting, 2 fireplaces and so much more. 851-8100 \$239,900



OPEN SUN. Hearthside Condominiums S. of Maple, E. of Southfield. IN-TOWN BIRMINGHAM Charming 3 bedroom condos on private cul-de-sac setting include fireplace living room with doorwall to yard, glorious master suite and quality throughout! JUST REDUCED! \$160,000-\$175,000 647-5100



SPRAWLING CUSTOM-BUILT ranch in Southfield makes for wonderful family living. Glorious master suite with walk-in closet, country kitchen with nice appliances and much more. 851-8100 \$169,900



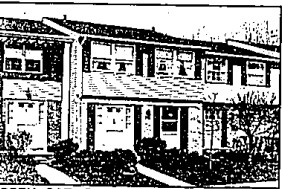
ALMOST TWO ACRES with stream in Birmingham. Lovely lot for this 4 bedroom ranch. Bright kitchen with skylight, 2 fireplaces, and loads of space! Walnut Lake Privileges. 647-5100 \$167,900



OPEN SUN. 300 Shellbourne N. of Walnut, W. of Adams. MEMORABLE 4 bedroom, 2 story situated in Rochester. Gorgeous home with tasteful neutral decor, large beautifully landscaped lot, 2 tier deck and more. 651-8850 \$157,900



OPEN SAT. & SUN. 1191 SCHOOL RD. E. on Avon, South on John R., E. on School Rd. 6 ACRES! City convenience country living! Rochester ranch offers jacuzzi, breezeway and 3 great bedrooms. Newer BARN has electricity. A must see! 651-8850 \$149,950



OPEN SAT. 5286 Breezehill Place, N. of Long Lk., E. of Coolidge. TROY TOWNHOUSE boasts new ceramic foyer, parquet floors, finished basement and lovely wood deck. Great location. 689-8900 \$84,500



OPEN SUN. 2101 Highbury, N. of Long Lk., E. off John R. Rd. TROYS' FABULOUS Stoneridge Woods sub. Boasting all brick ranch, walk to elementary, 3 bedrooms, master bath and large open floor plan. 689-8900 \$109,900



OPEN SUN. 1217 Duckwood Ct., S. of M-59, E. of Bogle Lake Rd. WELL KEPT HOME On 100 ft. lake lot. Master suite, cozy fireplace, rec room has walkout. Spectacular! 851-8100 \$139,500



OPEN SUN. 2210 Lancaster, N. of Square Lk., E. of Woodward. UPDATED BRICK RANCH on gorgeous treed lot. Newer formica kitchen, hardwood floors, screened porch and neutral carpeting. Bloomfield! 689-8900 \$83,500



CHEERFUL, BRIGHT, AND COZY Southfield ranch! This immaculate home is perfect for starter. Park-like double lot with mature trees, and Florida room with wood burning stove make this house special. Unbelievable price. 851-8100 \$41,500



OPEN SUN. 29085 Fairfax, N. off 12 Mile, W. of Greenfield. BEAUTIFUL RANCH in SOUTHFIELD. Immaculate move-in condition, family room in finished basement, new landscaping, close to school and shopping. 648-6000 \$65,900



OPEN SUN. 3206 Rycroft, E. of Orchard Lk., S. of Square Lk. CUTE RANCH with large room and Cass Lake PRIVILEGES. Two bedrooms and newer cabinets, carpet, tub and furnace. Neutral decor and patio add comfort. 626-9100 \$47,900



OPEN SUN. 29405 Candlewood, N. of 12 Mile, W. of Southfield. CRANBROOK VILLAGE offers 3 bedroom ranch on gorgeous treed street. Mint condition, spacious rec room and hardwood floors! 626-9100 \$66,900

BIRMINGHAM
975 S. Hunter at
14 1/2 Mile Rd.
648-6000

BLOOMFIELD HILLS
1520 N. Woodward
at Long Lake Rd.
647-5100

FARMINGTON HILLS
FRANKLIN
30840 Northwestern Hwy.
at Long Lake Rd.
626-9100

TROY
5017 Rochester Rd.
at Long Lake Rd.
689-8900

ROCHESTER
1000 W. University
(In Meadowbrook Plaza)
651-8850

WEST BLOOMFIELD
4316 Orchard Lake Rd.
at Lone Pine Rd.
851-8100

OPEN MONDAY-FRIDAY 9 a.m. - 7 p.m. SATURDAY 9 a.m. - 5 p.m. OPEN SUNDAYS

