

## exhibitions

Continued from Page 6

### • MICHIGAN GALLERY

"Earthen III," expressions in clay continues through May. Showing along with many of the state's outstanding professionals in this medium will be five recent graduates of Cranbrook Academy of Art. Hours are 11 a.m. to 5 p.m. Thursday-Friday and 1-5 p.m. Saturday, 2661 Michigan Ave., Detroit.

### • FELDMAN GALLERY

Shaped canvases by Charles Hinman will be on display through June 14. Hours are 10 a.m. to 5 p.m. Monday-Saturday, 6917 Orchard Lake, West Bloomfield.

### • YAW GALLERY&

Weatherwans by Jonathan Bonner are on display through June 12. Hours are 11 a.m. to 5 p.m. Tuesday-Saturday, 550 N. Woodward, Birmingham.

### • ARNOLD KLEIN GALLERY

Art by Jud Coveyou will be on display through May. Regular hours are 11 a.m. to 5:30 p.m. Tuesday-Saturday, 4520 N. Woodward, Royal Oak.

### • ST. MARY'S COLLEGE GALLERIA

Sculpture by Bernadette Zachara and paintings by Mary Palazzolo will be on display through May. Zachara has done many commissions for

corporations and individuals. Palazzolo, still life realist, is just beginning to show her work. The artists are sisters. Hours are 6-8:30 p.m. Weekdays and 1-5 p.m. Sunday, Orchard Lake and Commerce roads, Orchard Lake.

### • WILD WINGS

Original paintings and limited edition lithos by David Mass are on display through May 30. Hours are 10 a.m. to 6 p.m. Monday-Saturday, until 9 p.m. Thursday and Friday and noon to 5 p.m. Sunday, 155 S. Bates, Birmingham.

### • DETROIT INSTITUTE OF ARTS

Sculpture and drawings by Marilyn Schechter continue in the Sales and Rental Gallery through the month. Regular hours are 10 a.m. to 5 p.m.

### • DETROIT INSTITUTE OF ARTS

Final exhibit of four of the works of French photographer Eugene Atget continues through June. These, "Modern Times," were taken from 1898 to 1927 and are Atget's view of Paris as it moved into the 20th century. Hours are 10 a.m. to 5 p.m. Tuesday-Sunday, 5200 Woodward, Detroit.

### • PHYLLIS KRAUSE GALLERY

African works from Botswana, Zimbabwe and Zambia, carvings of ebony, teak and mopane, Bakuba pipe, jewelry, masks, puppets, handpainted silk yardage and Kachina dolls. Hours are 11 a.m. to 4 p.m. Tuesday-Saturday, 29 W. Lawrence, Pontiac.

## O&E sports... your guide to local scores

**THE LEGENDS**  
of Potawatomi Creek

**NOW OPEN**  
By its very nature... exceptional!

**30**  
Elegant Cluster Homes

Situated amid 10 acres of untouched, natural beauty, with majestic 150 year-old trees, a rambling creek, and large ponds. Small nature-walkways or observe wildlife from your private balcony. Enjoy unsurpassed recreational amenities. All this, with the security of a fenced, small community with guarded gatehouse entry.

**ASK FOR ALICE STEIN**  
**661-8324**  
or come see us.

\*\* Located at the SW corner of 14 Mile Rd. and Halstead Rd.  
(3 miles West of Orchard Lake Rd.) in Farmington Hills, MI  
Sains by: **Century 21 MJL Corporate Transference Service**  
Developed by: James L. Funk Property Developers, W. Bloomfield, MI

**Design Your Dream Home Check List**

- 1. FOUNDATION
  - ☐ Slab
  - ☐ Craw
  - ☐ Basement
- 2. EXTERIOR WALLS
  - ☐ 2 1/2"
  - ☐ 2 1/4"
  - ☐ 2"
- 3. WINDOWS
  - ☐ Casement
  - ☐ Doublehung
  - ☐ Fixed Glass
  - ☐ Awning
  - ☐ Wood



## When the Excitement is Building Up North Get the hard facts Now

Thinking about building that vacation getaway? How much would it cost to build your dream home - away from home? You tell us your fantasies, and we'll tell you what they're worth. Our computer check list makes the complex simple. Just check what you want, and we'll add it up - for free. The excitement is building in the Grand Traverse region - write or call us at, 10238 Cherry Bend Road, Traverse City, MI 49684 616/941-1448, and find out why - today.

**paul maurer**  
GENERAL CONTRACTING, INC.

### PHASE II NOW OPEN

In the Hills of West Bloomfield

## The MANOR HOMES at Aidingbrooke

For purchase



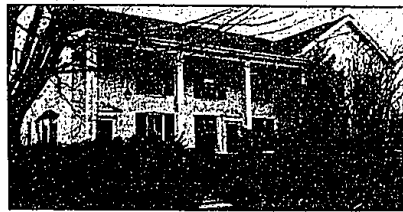
2 and 3 bedroom detached condominium homes of extraordinary quality and character.

Aidingbrooke is a private estate-like community situated on over 130 spectacular acres of pond, trees and rolling hills. Entry is off Drake Road, between Maple and Walnut Lake Roads, through the 24 hour monitored gatehouse.

The Manor Homes at Aidingbrooke are open for your inspection daily from 12 to 6 p.m.  
From \$177,900  
**661-1750**

### PHASE II NOW OPEN

## ENJOY COUNTRY LIVING



### EQUESTRIAN HOMESTEAD

One of Washtenaw County's oldest (1828) restored properties. Ann Arbor Schools. This spacious house provides a unique lifestyle for both family relaxation and executive entertaining. Less than one hour from most major metro business locations.

Mary Sue Mancari

**SPEAR & ASSOCIATES**  
Ann Arbor, Michigan

**994-0112 or 668-7339**



The Common Living for the Elderly  
1-800-845-5555  
1-800-845-5555  
1-800-845-5555



## Join Your Friends

### Woodcliff... a limited edition of incomparable detached condominiums.

Hidden away in an incredibly lovely enclave of natural beauty you'll find Woodcliff condominiums. These exquisite architectural gems rise from the wooded and rolling sites as though Mother Nature had planned them.

There are only twenty-six homesites and over three-quarters have been sold.

Phone: 626-3502

Sales by the:

**herman frankel**  
ORGANIZATION

The families who have chosen Woodcliff represent the leaders in the professional and business world. Their desire for excellence is reflected in their choice. Only a few homesites remain... some perched on a hillside to accommodate walk-out lower levels, some overlooking the Tam O'Shanter golf course. Join your friends... because you deserve Woodcliff, too.

Detached Cluster Condominium Homes 2 and 3 bedroom from \$259,000  
Woodcliff is located west off Middlebelt, south of Lone Pine Rd.  
Follow Woodcliff signs to Information Center.

Office: 626-3500



**"ELEGANCE AND CHARM"**  
This custom built home has 4 bedrooms, 4 1/2 baths, central air, security system, sprinkling system and Intercom. All baths have Kohler fixtures. Too many features to list in this exceptional home. Must see to appreciate.  
\$415,000 737-9000



**"THIS IS IT"**  
The 4 bedroom, 2 1/2 bath home you have wanted. Spacious carpeted family room with wet bar and full brick fireplace wall, 1st floor laundry. Wooden deck for relaxing or entertaining. Attached garage plus more.  
\$99,800 737-9000



**"BERKLEY BUNGALOW"**  
This 4 bedroom home has now carpeting in living area, a rec room with bar in basement. Conventional VA-FHA.  
\$45,900 737-9000



**"IMPOSSIBLE TO FIND/SAMPLE ASSUMPTION"**  
Hurry on this - beauty in Southfield Gardens. 4 bedrooms, library, finished basement, central air, Intercom, security system, nice kitchen, patio and much more.  
\$298,900 737-9000



**"GRACIOUS LIVING"**  
Large airy rooms in this 2 bedroom brick condo with custom draperies, newer kitchen appliances, covered carport, close to pool and clubhouse. Large storage area in basement. Excellent condition!  
\$47,900 737-9000



**"LOVE A BARGAIN?"**  
3 bedrooms, 2 full baths, separate dining room, kitchen has custom oak cabinets, and almond appliances, 2 car attached garage plus more. Move in clean - immediate occupancy.  
\$43,900 737-9000

**THINKING CAREER CHANGE?**  
Coldwell Banker, America's largest full service real estate company has arrived in the Metropolitan Detroit Area. We are looking for people with a strong desire to succeed and high ethical and professional standards. Call Wilma Stout, Manager, 737-9000

**COLDWELL BANKER**

**Observer & Eccentric**  
**CLASSIFIED**  
**ADVERTISING**

844-1078 Oakland County 981-0888 Wayne County  
943-3223 Rochester/Rochester Hills