

## Creative Living

Mario McGee editor/591-2300



Thursday, June 12, 1986 O&amp;E

(F)1E

## Set of 'givens' provides challenge

By Corinne Abati  
Staff writer

Interior designer Linda Golden began the family room for a local couple with a set of "givens." It had to be comfortable, seat 16 people, be a showplace for a collection of Lalique glass and please two people who don't like the same colors. She loves purple, he hates it. He likes brown, she can take or leave it.

But, Golden, an energetic designer with a sense of adventure, waded right in and came up with a room that pleases all concerned. Her friend and fellow interior, Diane Rosenberg, also made some helpful suggestions.

Much of the glass by Rene Lalique (1860-1945) has an Art Deco look, colors and designs are subtle, some are rich blues or browns, but often as not they are pastel to white with soft highlights of other colors that come and go as the light changes.

Another given was to show off a glass-paneled, Art-Deco-style rosewood cabinet made by Lalique. The couple had had dark mottled marble put over the brick fireplace before Golden arrived on the scene.

ling silver, called "Pound Sterling," from Rozmallon at the Design Center. Many of the other fabrics came from Rozmallon as well. Between the two silver tub chairs with the striped backs is a deep purple ottoman.

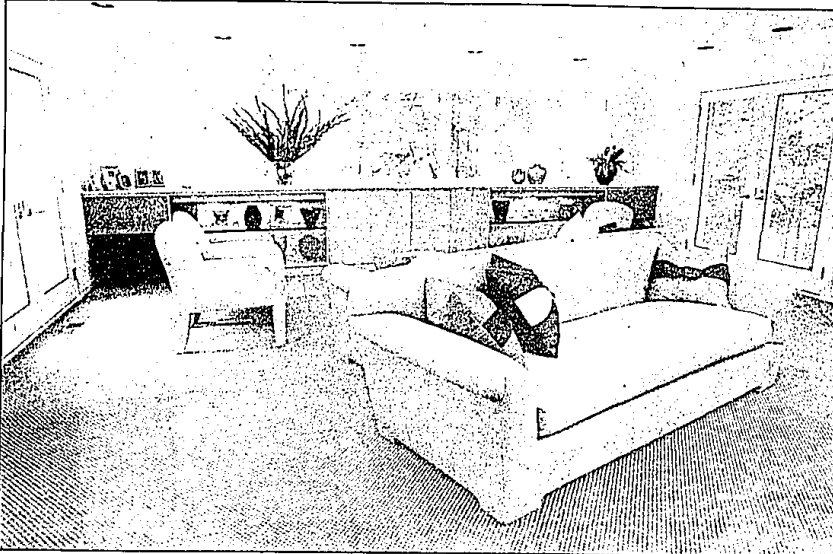
The arrangement of the sofas creates two conversational areas in the room — one focusing on the fireplace and the other in the direction of the large horizontal picture window with a view of the garden. Golden had Vogue Furniture design a 20-foot-long built-in of white waxed oak for under the window.

The open shelves provide secure space for displaying glass and a TV is unobtrusively placed behind cabinet doors. There's space under each end of the built-in for matching purple ottomans. Nicely tucked away until needed.

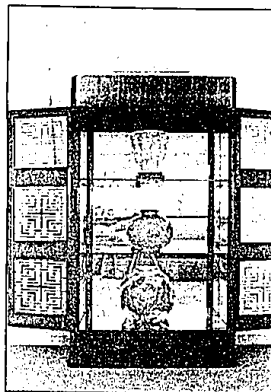
The pull-up chairs at that end of the room are covered in gray corduroy. The circular coffee table, stainless steel with a marble top matching that of the fireplace was made by Vogue Furniture.

More seating is provided by three bar stools at the transitional counter between kitchen and family room. They're covered in a gray, snakeskin print vinyl.

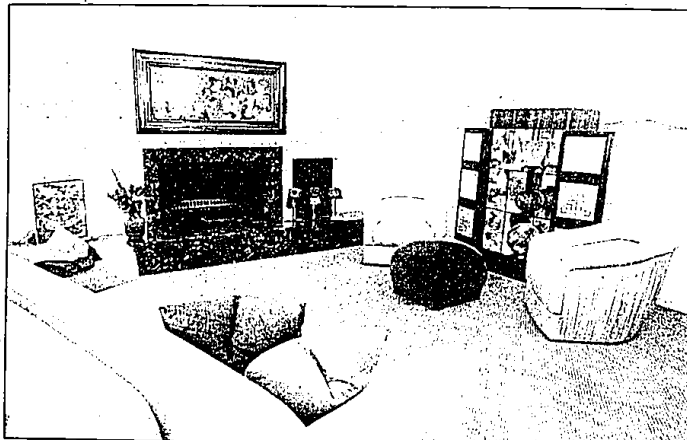
SO, WHERE'S THE color? Some is in a painting over the fireplace. But the color accents that light the whole room are the pillows with obi sash motif, designed by Golden and made of brilliant aqua, yellow, pink and purple silk from Campbell Louis showroom at the Design Center.



**GOLDEN CHOSE** a rich gray English wool carpet with a creamy white fleck pattern and continued using shades of gray throughout the room. The two back-to-back Art Deco sofas are covered in gray wool. Two swivel tub chairs, which flank the rosewood cabinet, are done in an elegant fabric, hand painted in ster-



The treasured rosewood cabinet with the glass-paneled doors was made by Rene Lalique. The owners appropriately display choice pieces of Lalique's glass in it.



The family room that interior designer Linda Golden did in shades of gray with touches of brilliant color in the silk pillows and accessories is pictured above and at left. The built-in under the window was designed by Golden and made by Vogue Furniture to display glass, house the TV and stereo equipment and fit the formal atmosphere of the room.

Staff photos by  
Dan Dean

## Green thumbs refine Wright look

The gardens and landscaping of the Frank Lloyd Wright Affleck House of Bloomfield Hills are getting the expert green thumb treatment from a group of volunteers working with landscape architect Phyllis Ross.

The house, which was given to Lawrence Institute of Technology of Southfield by the Affleck family, is being lovingly cared for inside and out. It is used by the school as a

meeting place and teaching facility.

Supporting it in both funding and sweat equity are the Friends of the Frank Lloyd Affleck House. Those who like to help care for the outside, members of the Volunteer Garden Club, meet there at 9 a.m. on alternate Thursdays. They arrive in their work clothes, garden tools in tow.

On Thursday, June 13, following the work period, the volunteers will be luncheon guests at the house and Karl H. Greimel,

dean of the LIT School of Architecture, will officially welcome them as an important part of the restoration effort.

Ross directed a group of professional landscapers last fall as overgrown foliage was removed and new shrubs and plants were added to improve the looks of the scenic lot and beautiful architecture.

A purist who has studied Wright architecture and landscaping plans, Ross's goal is to

keep the landscaping as the great man himself would have liked.

The one thing Wright never figured out was how to discourage weeds in a garden. But somehow the quality of his architecture takes care of that. The volunteers are willing to work hard to keep it as beautiful as he envisioned.

For Garden Club information, call 356-0200, Ext. 2369.



John Joyce came to garden volunteer duty completely equipped with tools, gloves and hat.

Staff photos by  
Stephen Cantrell

Volunteer Connie Bertrum wasted no time on the first day this spring in getting to heart of the weed situation.



The Frank Lloyd Wright Affleck House is a picturesque backdrop for volunteers such as Rhonda

Thede who work every other Thursday on the gardens and grounds.