

exhibitions

PEWABIC POTTERY

Friday, June 20 — Student show will continue through July 20 with an opening reception 6-9 p.m. Friday. Regular hours are 10 a.m. to 5 p.m. Tuesday-Saturday, 10125 E. Jefferson, Detroit.

I. IRVING FELDMAN GALLERIES

Friday, June 20 — Pattern and trompe l'oeil paintings by Jeanne Norman Chase continue through July 19. Reception to meet the artist 7-9 p.m. Friday. Hours are 10 a.m. to 5 p.m. Monday-Saturday, 6917 Orchard Lake, West Bloomfield.

TROY ART GALLERY

Saturday, June 21 — "Flying Guidance," mythical bird portraits and other images on clothing by Carol Stormzand. Opening reception 11 a.m. to 5:30 p.m. Stormzand is an imaginative, up-beat artist who creates one-of-a-kind wearable art works for young and not-quite-so-young. Regular hours are 11 a.m. to 5 p.m. Tuesday-Saturday, Top of Troy course, 755 W. Big Beaver, Troy.

BELIAN ART CENTER

Sunday, June 22 — "Omaggio," tribute to five Italian American artists continues through July 16. Co-sponsored by the Italian Study Group of Troy, the show features works by Frank Cassara, Harvey Gerrero, Sergio De Giusti, Robert Viglietti and Carlo Vitale. Reception for the artists 4-8 p.m. Sunday. There will be an informal discussion with the artists, "Ethnic Heritage and the Arts" 7-9 p.m. Friday, June 27, with De Giusti as moderator. Hours are 11 a.m. to 6 p.m. Monday-Saturday, 5980 Rochester at Square Lake, Troy.

CADE GALLERY

Gallery selections continue through June 25. Hours are 10:30 a.m. to 7 p.m. Tuesday-Saturday, 214 W. Sixth, Royal Oak.

FIRST FEDERAL SAVINGS AND LOAN

"Handmade paper works by William MacArthur are on display in the gallery space of the main office building, 1001 Woodward, Detroit. Continues through July 7. MacArthur is a teacher in the Bloomfield Hills district as well as studio artist.

HABATAT GALLERIES

"Concepta Mason Reconstructed Images" continues at the gallery through July 10. Also on display in

the galleries is "Lampwork," an international exhibition featuring artists from West Germany, East Germany and the United States.

Dale Chihuly's "Large Macchia" will be on display through July 12. The gallery is at 28235 Southfield, Lathrup Village.

CRANBROOK ACADEMY OF ART MUSEUM

Student Summer Show featuring 74 works by 60 current and recently graduated students continues through Sept. 14. Hours are 1-5 p.m. Tuesday-Sunday, 500 Lone Pine, Bloomfield Hills.

RUBINER GALLERY

Invitational Craft Show includes works in ceramics, glass, wood, fiber and jewelry by some 14 artists from around the country. Hours are 10 a.m. to 5:30 p.m. Tuesday-Friday, until 5 p.m. Saturday, 7001 Orchard Lake, West Bloomfield.

DETROIT INSTITUTE OF ARTS

Sharing Traditions: Five Black Artists in 19th-Century America" continues through July 27. The artists are Joshua Johnson, Robert Scott Duncanson, Edward Mitchell Bannister, Edmonia Lewis and Henry Ossawa Tanner. Open to the public free. Hours are 9:30 a.m. to 5:30 p.m. Tuesday-Sunday, Detroit.

SCARAB CLUB

All-member show continues through June 21. Assorted media by many well-known artists. Open to the public free, 217 Farnsworth, Detroit.

FRED GROSSMAN GALLERY INC.

"Images in Bronze" includes art to wear collection by Erie as well as sculptures by him. The art-to-wear collection includes works by Agam and Vasarhely. Hours are 10 a.m. to 5 p.m. Monday-Saturday, Sunset Strip, 25228 Northwestern, Southfield.

MICHIGAN GALLERY

"Detroit Bronze," an exhibition of contemporary bronze sculpture by more than 20 artists, continues through June 27. Hours are 11 a.m. to 5 p.m. Thursday-Saturday, 2661 Michigan Ave., Detroit, one mile west of Tiger Stadium at 20th Street.

DETROIT GALLERY OF CONTEMPORARY CRAFTS

Whimsical accessories for home, garden and office continues on display through June, 301 Fisher Building, Detroit.

play through June, 301 Fisher Building, Detroit.

THE COMMUNITY HOUSE

Rosemary Stickle is featured artist of the month and her watercolors are on display throughout the building, 380 S. Bates, Birmingham.

ROBERT L. KIDD ASSOCIATES GALLERIES

New paintings by Moe Brooker, Valentina Dubsky, Kibuo Saito and Don Cooper; sculpture by Louise Kruger and Frank Fleming; and glass by Marvin Lipofsky and Robert Palusky continues through July 12. Hours are 10:30 a.m. to 5:30 p.m., 107 Townsend, Birmingham.

SUSANNE HILBERG GALLERY

Ceramics by Betty Woodman continue through July 12. Hours are 11 a.m. to 5 p.m. Tuesday-Saturday, 555 S. Woodward, Birmingham.

ARNOLD KLEIN GALLERY

Unusual examples of American art pottery are on permanent display at the gallery. While most of it is Rookwood (1880-1940) there are also Roseville, Pewabic, Fulper, Weiler, Red Wing, Hampshire, Nippon and Cowan pieces. Hours are 11 a.m. to 5:30 p.m. Tuesday-Saturday, Royal Oak.

PRINT GALLERY

Original lithographs by photo realist John Baeder are on exhibit through July 15. Baeder paints dancers as others paint horses or dancers or people. Hours are 10 a.m. to 5 p.m. Monday-Saturday, until 9 p.m. Thursday, 29203 Northwestern, Southfield.

D & J BITTKER GALLERY

"Abstractions: Expressionist, Fig-

urative & Geometric" continues through June. There are expressionist calligraphic paintings by Machi, cast bronze figurative sculptures by Shikano and geometric three-dimensional paintings by Kywayama, 350 N. Woodward, Birmingham.

FEIGENSON GALLERY

New paintings by Nicholas Maffei are on display through July 12. Hours are 11 a.m. to 5 p.m. Tuesday-Saturday, 310 Fisher Building, Detroit.

FIELD ART STUDIO

New exhibit of limited-edition prints by Willi Moses, grandson of Grandmother Moses, Elizabeth Hampe, Paul Jenkins, Richard Kozlow and mixed media on paper by Kent Kalman Pachuta. Continues through July 15. Hours are 9 a.m. to 5 p.m. Monday-Saturday, 2846 Coolidge, Berkeley.

PARK WEST GALLERIES

1966 Works of Harold Aftman are on display. These are the latest lithographs by a leading graphic artist. These are small dramas, a street market, vendors and shoppers on Parisian streets or people in quiet picturesque parks. Hours are 10 a.m. to 6 p.m. Monday-Wednesday, until 9 p.m. Thursday and Friday, 11 a.m. to 6 p.m. Saturday and Sunday, 29469 Northwestern, Southfield.

ANN ARBOR ART ASSOCIATION

"Sculptured Flossa" by Urban Jupena is on display through June 28. This work illustrates a special process that this handweaver uses involving working from a series of anatomical photographs and detailed drawings, sculpting and trimming individual threads in the translation of a full-scale cartoon, 117 W. Liberty, Ann Arbor.

FEIGENSON GALLERY

Oil paintings on marine birch plywood or board by Nicholas Maffei of New York are on display through July 12. Hours are 11 a.m. to 5 p.m. Tuesday-Saturday, 310 Fisher Building, Detroit.

PHYLLIS KRAUSE GALLERY

Drawings by George Grosz are on display. Hours are 11 a.m. to 4 p.m. Tuesday-Saturday, 29 W. Lawrence, Pontiac.

HILL GALLERY

"Structure Abstraction" features works by Jan Muller, Jake Berthot, John Duff, Myron Stout, Robert Mangold, Richard DeVore, Sean Scully, Michael Hall, Harvey Quateman, Jay Wholley, Steve Kelater, Larry Crossman and Joseph Wesner. Continues through June 26, 163 Townsend, Birmingham.

SHELDON ROSS GALLERY

Recent acquisitions by gallery favorites and some newcomers are in the 10th anniversary show — Hopper, Grosz, Kienischmidt, Lisitsky, Rivera and Boarden. Regular hours are 11 a.m. to 5 p.m. Tuesday-Saturday, 250 Martin, Birmingham.

OCC — ROYAL OAK CAMPUS

Lola Sonnenschein. Selected Works, will be on display through June 24. Open during school hours, 739 S. Washington, Royal Oak.

WILD WINGS GALLERY

Paintings and graphics by northern Michigan watercolorist, Nita Engle and California artist Joe Garcia are on display through June. Hours are 11 a.m. to 6 p.m. Thursday and Friday, until 9 p.m. Saturday and Sunday, 155 S. Bates, Birmingham.

Bloomfield's Designer Label



Phase I Sold Out

Now Selling Phase II

- Exclusive sites with walkout lower levels
- Natural wooded setting

The Ultimate Condominium

Open daily & week-ends 12-5 p.m. (Closed Thursdays)
SOUTH OF WALNUT LAKE ROAD, JUST ONE (1) BLOCK
WEST OF DRAKE ROAD IN WEST BLOOMFIELD

Priced from **\$129,990** **661-0338**
557-2080

Presented by
HERBERT LAWSON, INC.

Bst Investment & Realty Co.

532-3510

WHERE THE

CALL US TODAY

BUYERS USE OUR TRADE-IN
PLAN TO BUY YOUR HOME

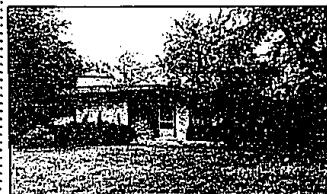
25225 W. 7 Mile
Sterling Building
Redford Township, MI 48240

MULTI-LIST
SERVICE



SOUTHFIELD FAMILY HOME

North of Twelve Mile Rd., 3 bedrooms, 1 1/2 baths, 1700 sq. ft. ranch. Offering family room with fireplace, formal dining room, central air, finished rec room with bar, 2 car attached garage. \$78,900 (B296) 557-0700



SOUTHFIELD "CRANBROOK VILLAGE"

Three bedroom ranch with cathedral ceiling, full basement, remodeled kitchen with oak counters. Beautiful treed lot with patio, waterfall and stream. MUST SEE!! Asking \$64,900. (W299) 547-2000



FARMINGTON HILLS

Spacious Nosen built colonial with 4 bedrooms, 2 1/2 baths, formal dining room, family room with natural fireplace, first floor laundry, central air, attached 2 car garage with opener, wooded lot and many extras. \$119,000 (C250) 851-2303

Expressing Elegance...

Glen Oaks APARTMENTS

Glen Oaks. The only one of its kind. Quite simply in expressing elegance, quality and prestige, Glen Oaks has no equal.

Glen Oaks. An exclusive private community nestled in 10 naturally landscaped acres, complemented by a lake, stream and ponds. Built to accommodate the most discerning eye and discriminating taste. It stands unrivaled. Nothing was spared or omitted. Like the helicopter landing pad and all grounds security - virtually impenetrable to the uninvited. Yet, within minutes from your doorstep, is Twelve Oaks Mall - with more than 150 stores, restaurants, and theaters - for your convenience and enjoyment.

If you aspire to live in an environment offering the very best - make your address Glen Oaks, and seek refuge in this oasis of luxury.

Exclusively leased by:
Chamberlain REALTORS
851-2303 or 478-9100

Models open Sat. & Sun. 11-4 p.m. or by appointment



QUIET STREET - GRACIOUS LIVING

Over 2,700 sq. ft. backing onto nature trail, is this 4 bedroom, 2 1/2 bath colonial. Living room, formal dining room, finished rec room with wet bar. Circular drive, 2 1/2 car ATTACHED GARAGE. \$103,000 (HW282) 557-6700



FARMINGTON HILLS

Nice spacious large family home with 5 bedrooms, 2 1/2 baths, family room, dining room, 2 fireplaces and magnificent yard with solar heated pool and spa, waterfall, in-ground trampoline and astro turf putting green. \$144,900 (B265) 851-2303



FARMINGTON HILLS TRI-LEVEL

Custom built, 4 bedrooms, 3 1/2 baths, cathedral ceilings, 1st floor in-law master suite. Close to public and parochial schools. Workshop in oversized garage. Fireplace installed, newer roof. Appliances negotiable. \$110,000 (D316) 540-6777

SOUTHFIELD/LATHRUP
557-6700

ROYAL OAK
547-2000

BIRMINGHAM
540-6777

Chamberlain
REALTORS

WEST BLOOMFIELD
851-2303

ROCHESTER
651-3330

BLOOMFIELD
644-6788

TROY
643-8500

SINCE 1948