

## College Night Coming Up

FARMINGTON The annual program is designed to acquaint seniors, juniors, and parents with procedures related to entering college. Farmington and Walled

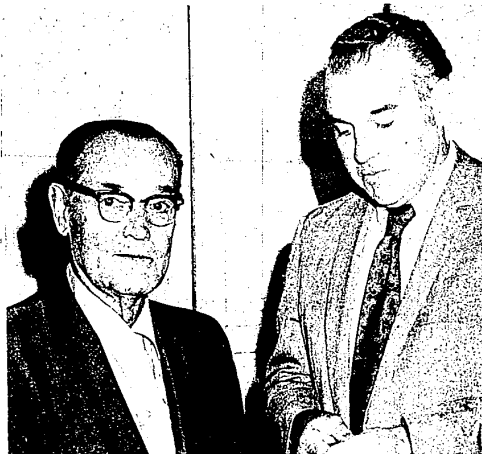
Lake High Schools will participate with Northville. Representatives from about 50 of the nation's colleges and universities will be there in an advisory role. Representatives from the four branches of military services and the Michigan League for Nursing will also attend. This year's panel discussion will deal with the topics of student involvement, dormitory life versus commuting, and college admissions.

### Faculty of 3

Western Michigan University, created for the purpose of preparing teachers, held its first classes in 1904 with 117 students and three faculty members.

Senior Minister of large, liberal, well-established Protestant church in Southfield offers free counseling as a community service. Please telephone his secretary, Mrs. Williams.

EL 2-6954 for an appointment.



GOOD TIMES AHEAD — Frank Ost (left) receives school activities passes on behalf of Farmington's senior citizens. Passes entitle their bearers to attend all school-sponsored events such as games, plays and concerts free of charge. Making the presentation is John K. Cotton, director of physical education and athletics. Passes are available at Farmington Community Center where senior citizens meet each Tuesday. (Evert photo)

## Spreen To Be Guest At Homemakers' Tea

PONTIAC The Oakland County Homemakers' Council extends an invitation to all interested women to attend a membership tea Thursday, Oct. 8, at 1 p.m. in the Waterford Oaks Recreation Center, 2800 Watkins Lake Rd., Pontiac.

The highlight of the program will be an address by Johannes Spreen, former Detroit police commissioner and consultant to the Oakland County Prosecutors office. His topic will be "Crime in the Streets — What Can Women Do?" Miss Janice Kukar, Extension Home Economist will answer the question "What's in it for you — Extension Study Group Membership?"

THE COOPERATIVE Extension Service of Michigan State University has organized and sponsored Extension study groups in Oakland County for the past 50 years.

The Extension Home Economist prepares and presents information on pertinent topics for group leaders who in turn teach what they have learned to members of their groups.

The focus of the program has shifted from the doing skills needed in the early years of the program to the complex task of being a consumer and home manager.

GROUPS OF WOMEN meet throughout the county in order to keep up-to-date and learn the latest information that affects their role as homemaker. Study groups can be found from Troy to South Lyon and from Royal Oak to Holly.

Programs for this year include: Improving Environmental Quality, Low Cholesterol Meals, Awareness-Insight into People, Selection of Furniture Fabrics and Scandinavian Cookery.

For more information contact the Extension office, 1025 N. Telegraph, Pontiac, 334-5007.

**Are you considering**  
**• ROOFING • SIDING**  
**• GUTTERS**  
*for your home?*  
**KNOW YOUR CONTRACTOR!**

- Does he use quality materials and qualified mechanics on his jobs?
- Is he insured to protect you and your property from suits?
- Does he pay his bills - so you will not have your home liened?
- Is he licensed by the State of Michigan?
- Will you deal with the owner - not a commissioned salesman?

**WE CAN ANSWER YES TO ALL THESE QUESTIONS**  
 For a competent price on your job call -  
**"Des" Archdale or "Joe" Yurgin**  
**ARCHDALE - YURGIN**  
**Contractors, Inc.**  
 31780 8 MILE ROAD - FARMINGTON  
**CALL 477-7290**

# Annual Report for Clarenceville School District

## School District

### As of June 30, 1970

ASSETS		1969	1970
Petty Cash Funds	\$ 350	\$ 350	\$ 500
Cash in Bank	505,396	503,584	503,584
Taxes Receivable	121,296	149,115	149,115
Accounts Receivable	78,450	74,137	74,137
Accounts Receivable - Federal	7,474	10,981	10,981
Inventories:			
Custodial - Supplies	\$5,324	\$6,666	\$6,666
Transportation	2,727	5,044	5,044
Teaching Supplies	4,867	12,918	18,367
Prepaid Insurance	5,893	7,501	7,501
Due from Other Funds	7,188	—	—
Other Prepaid Expense	528	3,150	3,150
Accrued Interest Receivable	4,089	8,093	8,093
<b>Total Assets</b>		<b>\$743,582</b>	<b>\$775,428</b>
LIABILITIES AND FUND EQUITY			
LIABILITIES			
Accounts Payable	\$ 34,581	\$ 22,287	\$ 22,287
Current and Short-Term Loans	386,400	347,000	347,000
Due to Other Funds	776	6,301	6,301
Due to Federal Government	2,170	1,756	1,756
Salaries Payable	21,227	119,873	119,873
Accrued Interest Payable	10,960	11,636	11,636
Deferred Revenue	2,633	1,238	1,238
Deferred Revenue - Federal	570	2,877	2,877
Reserve for Obligations - Federal	300	350	350
<b>Total Liabilities</b>	<b>\$459,617</b>	<b>\$513,318</b>	<b>\$513,318</b>
FUND EQUITY			
Fund Equity, June 30, 1969	283,965	262,110	262,110
<b>Total Liabilities and Fund Equity</b>	<b>\$743,582</b>	<b>\$775,428</b>	<b>\$775,428</b>

	1969	1970
REVENUES		
Property Tax Levy	\$1,430,398	\$1,583,094
Interest on Delinquent Taxes	2,900	3,328
Taxes Other than Property	8,331	8,221
Tuition	2,656	5,236
Interest on Investments	16,707	26,916
Miscellaneous	90,306	114,295
State School Aid	1,215,574	1,291,271
Drivers Education	8,790	9,750
Vocational Education	5,000	3,268
Federal Programs	20,867	21,888
County Special Education Tax	71,208	63,051
Cafeteria	127,353	138,407
Bookstore	19,261	21,180
<b>Total Revenue</b>	<b>\$3,019,361</b>	<b>\$3,289,905</b>
EXPENDITURES		
Instruction	\$1,940,820	\$2,236,249
Administration	155,273	174,227
Attendance	4,849	4,832
Health Service	2,933	2,918
Pupil Transportation	75,110	78,364
Operation of Plant	315,593	343,292
Maintenance of Plant	81,045	92,776
Fixed Charges	87,166	88,169
Capital Outlay	37,676	35,668
Cafeteria	129,327	138,423
Bookstore	17,769	18,409
Miscellaneous	74,432	97,285
<b>Total Expenditures</b>	<b>\$2,921,993</b>	<b>\$3,310,612</b>
EXCESS OF REVENUES OVER EXPENDITURES	\$ 97,368	\$ (20,707)
ADJUSTED FUND EQUITY, JULY 1	231,117	330,556
<b>FUND EQUITY, JUNE 30</b>	<b>\$ 328,485</b>	<b>\$ 309,849</b>

SUTHERLAND & ROBSON  
 CERTIFIED PUBLIC ACCOUNTANTS  
 150 W. WASHINGTON  
 ANN ARBOR, MICHIGAN  
 August 22, 1969

To the Board of Education  
 Clarenceville School District  
 of Oakland and Wayne Counties  
 Farmington, Michigan

We have examined the combined balance sheet of the various Funds of the Clarenceville School District of Oakland and Wayne Counties at June 30, 1969, and the related combined statement of revenues, expenditures and fund equity for the year then ended. Our examination was made in accordance with generally accepted auditing standards and accordingly included such tests of the accounting records and such other auditing procedures as we considered necessary in the circumstances except as noted in the following paragraph.

The amount of taxes receivable was not confirmed with the taxing units. However, we did satisfy ourselves by the application of other auditing procedures as to their fairness.

Our audit was on the financial records of the District and not on the child accounting records.

In our opinion, the accompanying combined balance sheet of the various Funds and the related combined statement of revenues, expenditures and fund equity present fairly the financial position of the various Funds of the Clarenceville School District of Oakland and Wayne Counties at June 30, 1969 and the results of their operation for the year then ended, in conformity with accounting procedures recommended for educational institutions by the State of Michigan, Department of Education, applied on a basis consistent with that of the preceding year.

Respectfully,  
*Sutherland & Robson*

	1969	1970
Balance, JULY 1	\$130,336	\$ 51,753
RECEIPTS:		
Current Tax Collections	\$303,689	\$334,549
Delinquent Tax Collections	18,794	20,301
Interest on Delinquent Taxes	1,058	1,032
Interest on Investments	7,333	7,280
Michigan School Bond Loan	11,300	65,200
Miscellaneous Revenue	58	94
<b>Total Receipts</b>	<b>\$342,232</b>	<b>\$428,456</b>
Receipts and Beginning Balance	\$472,568	\$480,209
DISBURSEMENTS		
Bond Principal	\$175,000	\$180,000
Interest on Bonded Debt	245,180	236,856
Paying Agent Fees	635	597
<b>Total Disbursements</b>	<b>\$420,815</b>	<b>\$417,453</b>
<b>BALANCE, JUNE 30</b>	<b>\$ 51,753</b>	<b>\$ 62,756</b>
Debt Balance, June 30	\$6,000,000	\$5,880,000

	1969	1970
BALANCE, JULY 1	\$241,337	\$266,593
CASH RECEIPTS		
Interest Earned on Investments	\$ 8,747	\$ 4,779
County Grant for Special Education	112,000	—
<b>Total Receipts</b>	<b>\$120,747</b>	<b>\$ 4,779</b>
<b>Total Receipts and Beginning Balance</b>	<b>\$362,084</b>	<b>\$271,372</b>
DISBURSEMENTS		
Site Acquisition and Improvement	\$ 20,520	\$ 8,160
Contractor and Architects	32,760	189,514
Furniture and Equipment	42,119	29,969
Miscellaneous	92	363
<b>Total Disbursements</b>	<b>\$ 95,491</b>	<b>\$228,006</b>
<b>BALANCE, JUNE 30</b>	<b>\$266,593</b>	<b>\$ 43,366</b>

	1969	1970
Value of Sites	\$ 350,000	\$ 350,000
Value of Buildings	11,000,000	12,000,000
Value of Equipment	1,750,000	1,750,000
Number of Buildings	8	8
Number of Classrooms	180	184
Number of Teachers	188	184
TEACHERS' SALARIES		
Minimum B.A.	7,400	8,000
Maximum M.A.	12,900	14,900
Median	8,818	10,300
PUPILS		
Elementary pupils, resident	2,311	2,306
non-resident	0	1
Secondary pupils, resident	1,610	1,609
non-resident	5	6
<b>Total pupils</b>	<b>3,926</b>	<b>3,922</b>
Pupil-Teacher Ratio	20-1	21-1