

exhibitions

• SOMERSET MALL

Thursday, Aug. 14 — Mixed media, juried exhibit by members of the Sculpture Guild of Michigan continues through Sunday, Aug. 24. Many of the artists will be in attendance during the 10-day event, Big Beaver at Coolidge, Troy.

• SOUTHFIELD PARKS AND RECREATION

Paintings by Jose Romeo are on display through the month. Romeo has shown his work in galleries worldwide. Born in Puerto Rico, he now lives and works in the metropolitan area. Reception to meet the artist 7-9 p.m. Friday, Aug. 22, 26000 Evergreen, Southfield.

• FIELD ART STUDIO

Multi-color serigraphs by native American artist R.C. Gorman are on display through Sept. 16. Gorman paints images of the American Southwest. Hours are 9 a.m. to 5 p.m. Monday-Saturday, 2646 Coolidge, Berkeley.

• COUNTY GALLERIA

Tuesday, Aug. 19 — Wildlife paintings by Jack Bourdon are on display through Sept. 26. Reception to meet the artist 6-8 p.m. Tuesday. Open 9 a.m. to 5 p.m. Monday-Friday. The Galleria is in the Oakland County Executive Building (the building with the mirrored addition), 1200 N. Telegraph, Pontiac.

• J. WALTER THOMPSON GALLERY

Recent photographs by David M. Posther, who grew up in Big Bear, are on display through Sept. 3. Posther, now living and teaching in Kalamazoo, has been in juried exhibits throughout the Midwest. He won best of show at the 16th annual Scars Club exhibition and best of show at Images '86 at the Krast Art Center of St. Joseph. Hours are 9 a.m. to 5 p.m. Monday-Friday, Tower 600, Renaissance Center, Detroit.

• PRESTON BURKE GALLERIES INC.

Paintings by Irma Cavat and Romanos Ritz are on display through Sept. 10. Hours are 9 a.m. to 5 p.m. Monday-Friday, 240 East Grand River, Detroit.

• PONTIAC ART CENTER

Six artists' views of the human figure are on display through Sept. 17. Special reception to meet the artists hosted by the Michigan Sculpture Guild will be at 6 p.m. Friday, Sept. 12. The artists are Michael Curtis, Sergio DeGiusti, Todd Erickson, William Girard, Jay Holland and Dennis William Knight. Hours are 9 a.m. to 5 p.m. Tuesday-Saturday, 47 Williams, Pontiac.

• BLOOMFIELD FINE ARTS

Alfino Villasant, special exhibit of paintings by this artist who is one of the youngest and most honored artists of Peru. Continues through Aug. 16. Hours are 10 a.m. to 6 p.m. Tuesday-Saturday, until 8 p.m. Thursday and Friday, 280 N. Woodward Birmingham.

• MICHIGAN GALLERY

Contemporary Latino Art Exhibit '86 continues through August. Hours are 11 a.m. to 5 p.m. Thursday and Friday, 1-5 p.m. Saturday, 2661 Michigan, Detroit.

• CADE GALLERY

Paintings by Carl Angevine and bimetal bronze pieces by Todd Erickson continue on exhibit through Aug. 27. Hours are 10:30 a.m. to 7 p.m. Tuesday-Sunday, 214 W. Sixth Street, Royal Oak.

• J. IRVING FLEMAN GALLERIES

"A Salute to British Artists," featuring the work of David Hockney, Henry Moore and Richard, continues through August. Hours are 10 a.m. to 5 p.m. Monday-Saturday, 6917 Orchard Lake Road, West Bloomfield.

• CRANBROOK INSTITUTE OF SCIENCE

Three winners and 30 honorable mention entries in the Wildlife Art Awards competition for Michigan high school students are on display through August. Hours are 10 a.m. to 5 p.m. weekdays, 7-10 p.m. Friday, 10 a.m. to 10 p.m. Saturday and 1-5 p.m. Sunday. Admission charge, 500 Lone Pine, Bloomfield Hills.

• GRAND HOTEL GALLERY

Paintings of Michigan by Frederick Simper of West Bloomfield and Bois Blanc Island are on display through August in this new gallery in the Grand Hotel on Mackinac Island. Included will be scenes from the Straits area shoreline, the Mackinac Bridge, Sleeping Bear Dunes as well as flowers and wildlife.

• ART GALLERY OF WINDSOR

Paintings by E. Cavan Atkins of Birmingham are on display in the new third-floor gallery. A bonus is the relationship of Atkins paintings to German Expressionism which is clearly evident. Atkins had a one-man show at the museum about seven years ago. He was born in Canada and much of his work is based upon the years he lived there, but he's extremely versatile in approach and technique. Hours 10 a.m. to 5 p.m. Tuesday-Saturday, until 9 p.m. Wednesday and 1-5 p.m. Sunday, 445 Riverside Drive W., Windsor.

• PARK WEST GALLERIES

Rembrandt, Etchings — formerly the collection of the Los Angeles County Museum of Fine Art, are on display. Hours are 10 a.m. to 6 p.m. Monday-Wednesday, until 9 p.m. Thursday and Friday and 11 a.m. to 6 p.m. Saturday and Sunday, 29469 Northwestern, Southfield.

• KELSEY MUSEUM OF ARCHAEOLOGY

"Ancient Terracottas: Lasting Impressions of the Distant Past" features 160 moldmade terracottas from the Classical world and the ancient Near East, fifth-century B.C. to fourth-century A.D. Exhibit provides insight into the daily routines of people of the ancient world. Hours are 11 a.m. to 4 p.m. Tuesday-Friday and 1-4 p.m. Saturday and Sunday. University of Michigan, Ann Arbor. For information, call Lorene Sterner, 764-9304.

• DETROIT INSTITUTE OF ARTS

Exhibit of works by Francois Boucher, first painting to King Louis XV continues through Aug. 17. Photography by Imogen Cunningham and Contemporary Prints from Detroit Collections both are up through Sept. 7. Hours are 9:30 a.m. to 5:30 p.m. Tuesday-Sunday, 5200 Woodward, Detroit.

• DONNA JACOBS GALLERY

New acquisitions — Greek, Roman, Etruscan, Egyptian, Near Eastern and Pre-Columbian — are on display for the summer show. Hours are 11 a.m. to 5:30 p.m. Tuesday-Saturday, 574 N. Woodward, Birmingham.

• ROBERT L. KIDD ASSOCIATES

Through August — Trompe l'oeil by Otto Duercker, clay sculpture by John Donoghue and paintings by Joseph Drappell, James Hohe, Daniel Maffia and Mac Brooker. Hours are 10:30 a.m. to 5:30 p.m. Tuesday-Saturday, 107 Townsend, Birmingham.

• GALLERY BIRMINGHAM

Group show of local and internationally known artists continues during the summer. Hours are 10 a.m. to 5 p.m. Monday, Tuesday, until 8 p.m. Wednesday-Saturday, 223 S. Woodward, Birmingham.

• ART GALLERY OF WINDSOR

Through Sunday, Aug. 17 — Wanda Koop: Airplanes and the Wall, an

exhibition of 10 very large works by the Winnipeg artist will be at the Art Gallery of Windsor, 445 Riverside Drive West, Windsor. Hours: 10 a.m. to 4:30 p.m. Tuesday-Saturday, 1-4 p.m. Sunday.

• FEIGENSON GALLERY

Through August — Current works of Detroit photographer Brad Iverson will be shown. This is his second one-person exhibition at the gallery. Feigenson Gallery is at 310 Fisher Building, Detroit. Hours: 11 a.m. to 5 p.m. Tuesday-Saturday.

• TROY ART GALLERY

Through August — Landscapes, cityscapes and flowers by local, national and international artists continues. Summer hours are 11 a.m. to 5:30 p.m. Tuesday-Friday, until 3 p.m. Saturday. Closed Saturdays in August, 755 W. Big Beaver, Troy.

• DETROIT HISTORICAL MUSEUM

Throughout August — "The Thrifty Art: A Social History of Quilting"

will be on display. Hours are 9:30 a.m. to 5 p.m. Wednesday-Sunday, 5401 Woodward, Detroit.

• D&J BITTKER GALLERY LTD.

Contemporary and antique Japanese Textiles plus regular gallery collection of 18th- and 19th-century Chinese furniture continue. Hours are 11 a.m. to 5:30 p.m. Tuesday-Saturday, 536 N. Woodward, Birmingham.

• CRANBROOK ACADEMY OF ART MUSEUM

Through Sunday, Sept. 14 — Student Summer Show featuring 74 works by 60 current and recently graduated students continues. Hours are 1-5 p.m. Tuesday-Sunday, 500 Lone Pine, Bloomfield Hills.

• CANTOR LEMBERG GALLERY

Constantly changing summer exhibit will include works by John Boardman, Catherine Widgery, Jim Adley, D.K. Semivan and Craig

Carver, along with new prints by Jim Dine and Julian Schnabel. Hours are 11 a.m. to 5:30 p.m. Tuesday-Saturday, 536 N. Woodward, Birmingham.

• RUBINER GALLERY

Invitational Craft Show includes works in ceramics, glass, wood, fiber and jewelry by some 14 artists from around the country. Hours are 10 a.m. to 5:30 p.m. Tuesday-Friday, until 5 p.m. Saturday, 7001 Orchard Lake, West Bloomfield.

• FRED GROSSMAN GALLERY INC.

"Images in Bronze" includes art to wear collection by Erte as well as sculptures by him. The art-to-wear collection includes works by Agam and Vasari. Hours are 10 a.m. to 5 p.m. Monday-Saturday, Sunset Strip, 29528 Northwestern, Southfield.

• ARNOLD KLEIN GALLERY

Unusual examples of American art pottery are on permanent display at the gallery. While most of it

is Rookwood (1880-1940) there are also Roseville, Pewabic, Fulper, Wehr, Red Wing, Hampshire, Nippon and Cowan pieces. Hours are 11 a.m. to 5:30 p.m. Tuesday-Saturday, Royal Oak.

• PHYLLIS KRAUSE GALLERY

Drawings by George Grosz are on display. Hours are 11 a.m. to 4 p.m. Tuesday-Saturday, 22 W. Lawrence, Pontiac.

• SHELDON ROSS GALLERY

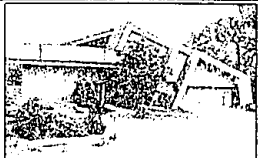
Recent acquisitions by gallery favorites and some newcomers are the 10th anniversary show — Hopper, Grosz, Kleinschmidt, Lisitsky, Rivera and Boardman. Regular hours are 11 a.m. to 5 p.m. Tuesday-Saturday, 250 Martin, Birmingham.

• PAINT CREEK CENTER

One-woman show of still lifes and collage series in watercolor and mixed media by Jean Marie McKnight of Troy. All new work. Continues through August.



Merrill Lynch Realty



SPECTACULAR WOODLAND LAKE-FRONT contemporary offers outstanding features. Recording studio, 3 fireplaces, two master suites, spa and deck surrounding entire home. DYNAMIC! \$299,500 851-8160



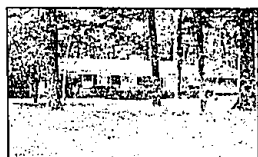
WELL MAINTAINED COLONIAL with circular drive, 2-way fireplace, finished basement with wet bar, private yard and many trees. 851-8100 \$162,000



80 FT. OF FRONTAGE ON ALL SPORTS Wormer Lake with access to Meadow Lake. Excellent location affords scenic view of lake. Large attractive colonial. Carefree exterior of brick and aluminum. Dock and cabana included. Waterford schools. \$158,900 851-8100



CUSTOM CONDO! Splendid extras abound in this 2 bedroom residence. Come see the carpeted porch for your round enjoyment, first floor laundry and so much more! \$109,900 626-9100



DESIRABLE SOUTHFIELD AREA for this wood and brick ranch. Much potential and some nice features such as cozy fireplace, patio and 3 bedrooms. \$84,900 626-9100



MAGNIFICENT QUALITY in glamorous Echo Park! Sprawling floor plan of close to 6000 square feet and filled with gorgeous detail. 5 bedrooms, leaded glass, in-law suite, 2-story foyer with circular staircase and all backing to serene Echo Lake! 626-9100 \$899,000



PRIVACY AT ITS BEST. Custom contemporary sets back in the woods. Unique qualities include red cedar decking, computerized sprinkler system, neutral decor and vertical blinds. 851-8100 \$165,900



EXTREMELY CLEAN COLONIAL with popular neutral decor for easy decorating. Sprawling floor plan with large rooms and all in move-in condition! Farmington Hills. \$145,900 626-9100



METICULOUS PRIDE OF OWNERSHIP shows in the special features inside this Farmington Hills Colonial. 4 bedrooms, finished basement, covered patio and newer carpet. Treed lot hides home from street for real privacy. \$134,900 626-9100



SHARP 3 BEDROOM RANCH in Ferndale. Beautiful landscaping, aluminum garage, neutral decor and great fenced yard. Close to expressways and a splendid park. Priced to sell. 851-8100 \$51,900



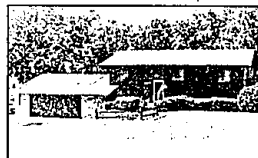
LAKE SHERWOOD setting for spectacular contemporary with heated pool. Quality throughout, open floor plan in 5,000 square foot home. Come and see the two-story driftstone fireplace. 626-9100 \$349,900



JUST REDUCED! DISTINCTIVE CONTEMPORARY nestled in exciting picturesque setting. Rambling deck and patio for outdoor entertaining. West Bloomfield's finest with Great Room, striking fireplace, 2 wet bars and more. 626-9100 \$310,000



COUNTRY SETTING IN SOUTHFIELD. This newer contemporary presents beautiful decor throughout, hardwood floors, breakfast room and dining room overlooking woods, sitting room off master bedroom, plus a fresh wood deck. \$144,900 626-9100



GRACIOUS FAMILY HOME on 1/4 acres in Farmington Hills. Fabulous attractions, inground pool, gorgeous setting, air and 4 super bedrooms. GREAT value! 626-9100 \$129,900



GRAND CAPE COD home offers 2 full baths, storage galley, plentiful fenced yard, finished basement and mature landscaping. Livonia Schools. \$85,000 626-9100

RELO CENTER

FREE

The RELO CENTER is now open! Free for Metropolitan Detroiters! Here, visitors can browse through colorful displays and gather literature, maps and brochures on the quality of life in greater Detroit. No appointment necessary and there's NO CHARGE!

If you're moving to greater Detroit, or simply want to learn more about the area, don't miss this unique opportunity without visiting the RELO CENTER!

1115 1/2 S. 11th St., 1st Floor, Dearborn, Michigan 48106-1529
Hours: Mon. 9:00-5:00 Saturday 10:00-1:00

RELO CENTER
American Center Building
27777 Franklin Road
Southfield, MI 48034

BIRMINGHAM
975 S. Hunter
at 11 Mile Rd.
646-6000

BLOOMFIELD HILLS
1620 N. Woodward
at Long Lake Rd.
647-5100

FARMINGTON HILLS
3040 Northwestern
at 13 Mile Rd.
626-9100

TROY
5017 Rochester Rd.
at Long Lake Rd.
689-8900

ROCHESTER
1000 W. University
(In Meadowbrook Plaza)
651-8850

WEST BLOOMFIELD
4315 Orchard Lake Rd.
at Lone Pine Rd.
851-8100