



Adding some flash

Giacca

hand and custom knit apparel for all seasons

Please join us for our Fashion Preview - Fall '86
Mon., Aug. 25-Fri., Aug. 29, 12-5 pm

23107 Northwestern Hwy. at 12 Mile
(Behind Optical Trends), Franklin Place
Mon-Fri, 10-4 pm 358-4085

Directions in Fashion

MANI
BY GIORGIO ARMANI

Suits from \$465
Sport coats from \$325

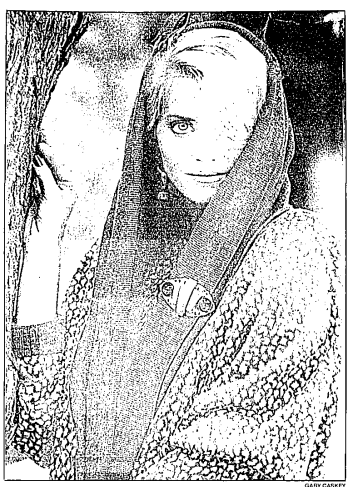
LAKESIDE MALL
OAKLAND MALL

ORCHARD MALL

flash "ion (flash) ion n.

1. The current style or custom, as in dress or behavior; the mode for the present.
2. Fashionable or style-conscious people in general; the social elite.
3. THE ORCHARD MALL

North of Maple
Orchard Lake Rd.



Leon Max grey and white cotton knit fleece print dress has a matching hooded jacket. Dress \$126, jacket \$138. Lookards Etc., Bloomfield Plaza and Birmingham.



Art-form leather suits ease into fall with elasticated waists in skirts and jacket panels in brocade. Skirts, \$625; jackets, \$1,155. Mom's, Boardwalk, West Bloomfield.

ANNOUNCING
THE OPENING OF OUR BIRMINGHAM LOCATION

FALL FASHION
FUR & LEATHER
DESIGNER FASHIONS for MEN & WOMEN

Featuring the Latest Designs from:
NORTH BEACH LEATHERS • MARC BUCHANAN
YAKKO • ANDREW MARC and many others

MILANO FUR & LEATHER
271 WEST MAPLE • BIRMINGHAM (Diagonally across from Jaccosens) 646-3660

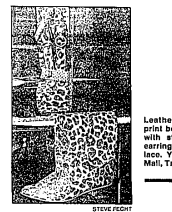
and dash



Bette Appel's bronzed, waterproofed jacket and bag with zebra-patterned khaki and bronze funnel neck shirt. The skirt is bronzed onyx with button back. Available early September. Bette Appel, Boardwalk, West Bloomfield and Bloomfield Hills.



Soft, supple gray leather dresses in leath, gray fox sections. Coat \$2,500. Matching gray leather skirt, \$500. Robert Mann Furs, Appleton Square, Southfield.



Leather, leopard-stenciled print bodice and belt combine with sterling silver cats in evening, bracelet and necklace. Ylang Ylang, Somerset Mall, Troy.

Many 'ins,' few 'outs'

HERE ARE VERY few actual fashion "outs" as we enter the second half of the '80s decade, but there are many "ins" from which to choose.

Some of the new "ins" that promise to keep the fun in the dressing game are:

- Belts — preferably alligator or crocodile — on everything, including coats, suits, jackets and dresses.
- Flat, comfortable shoes.
- The sophisticated western influence in boots, belts and jewelry.
- Animal prints everywhere.
- Suits, newly tailored and curve revealing.
- Dinner suits.
- Fanciful, elegant glamour for evening.
- Simplicity by day with an emphasis on quality.

Credits

This special Fall Fashion section of the Observer & Eccentric Newspapers was coordinated by special sections editor Marie McGee.

Fashion copy was written by special writer Rustie Shand.

Graphic editor was David Hark.

Photos were taken by staff photographers Stephen Cantrill, Gary Gasky and Steve Frecht. The cover photo was taken by Gasky.

Artwork for the cover was done by Gasky. Model: CBE Creative Services director.

Advertising coordinator was Margaret Shand.

About the cover:
The dress, "dior simplicity of black and one bright color" keynotes the season of fall. Donna Karan's red swing jacket and black skirt go over a red body suit. Jacket, \$350; skirt, \$245; body suit, \$200.

Giorgio Armani uses the sharp contrast of black and white mixed with charcoal grey. Sweater, \$200; trousers, \$155; skirt, \$70. Armani's.

- | | |
|--|--|
| QUINTESSENCE • JUDITH LEIBER • QUINTESSENCE • TWO SISTERS | QUINTESSENCE • JOAN VASS • QUINTESSENCE • CHAPEAU CREATIONS |
| QUINTESSENCE • CARLOS FALCHI • QUINTESSENCE • PANETTA | QUINTESSENCE • ANDREA B. • QUINTESSENCE • DIM • QUINTESSENCE |
| QUINTESSENCE • MILE FIORI • QUINTESSENCE • WENDY BELL • QUINTESSENCE • MARIA | QUINTESSENCE • RODRIGUEZ • QUINTESSENCE • LA CRASIA • QUINTESSENCE • SUSAN |
| QUINTESSENCE • GAIL • QUINTESSENCE • KATHYRI POST • QUINTESSENCE • SEMPLICE | QUINTESSENCE • SPORT • QUINTESSENCE • JOSE COTEL • QUINTESSENCE • ANDREA |
| QUINTESSENCE • CARRANO • QUINTESSENCE • BENAMUH • QUINTESSENCE • TONY | QUINTESSENCE • FERRARA • QUINTESSENCE • SHARIF • QUINTESSENCE • KIRK'S POLLY |

Quintessence at Lakeside • 23955 Northwestern Hwy. • Southfield, MI 48034 • (313) 258-8870

Miss Ellette
for
Postscript's
312 MAIN ROCHESTER

finally...

unique original day to evening women's apparel opening September 1st

FINI
330 Birmingham Road
Birmingham

After Hours Appointments Available

tres chic petites

A woman who is not quite as tall as she would like to be, can be just as dynamic as she wants to be, in her choice of clothes from...
Tres Chic Petites

6215 Orchard Lake Rd. • North of Maple • West Bloomfield • 737-0022