

Enrollment, road problems increase

By Casey Hane
Staff writer

The Farmington area growth boom began to show in local schools as they opened last week.

An enrollment increase of 377 students compared with the 1985 Fourth Friday count in Farmington Public Schools prompted officials to immediately hire three teachers and rework busing schedules to add routes.

The boom has also created many congested roads, which are causing major bus scheduling problems for the district, officials reported.

This prompted Superintendent of Schools Graham Lewis and school

board President Helen Putrow to voice strong support for the upcoming Tuesday, Sept. 23, local road tax election in Farmington Hills.

In the area of transportation needs, "we are encountering problems which are seriously hindering . . . us from delivering students to school," Lewis said. "This is something that certainly cannot be delayed. It is critical."

The pupil increase is 363 more than officials projected for the start of the 1986-87 school year, Assistant Superintendent Lynn Nutter said.

NUTTER TOOK the "first Friday" count on Sept. 5 after noticeable increases showed in seventh- and

ninth-grade classrooms. There was an exceptional increase at both Dunckel and Power middle schools, he said.

One additional teacher was hired at Farmington High School — in the past a non-growth school — and another five at the middle school level, he said.

The district had projected 3,529 students at the three high schools, where 3,689 students show as enrolled — an unexpected increase of 160 students. This was down from the 1985 Fourth Friday count of 3,763.

AT THE middle schools (grades six-eight), 2,128 students enrolled at four schools, up from the projected 1,972 and also up from the 1985 Fourth Friday count of 2,037.

The middle schools received 156 students more than the district projected. At one middle school, as many as 25 students with parents

have walked in to enroll," Nutter said.

The 11 elementary schools (kindergarten-fifth grade) showed the largest increase, with 300 more students than the 1985 Fourth Friday count of 3,944 and 47 more than district projected.

In kindergarten alone, 118 students are enrolled in developmental kindergarten and 747 in traditional classes totaling 865.

This is an indication of the growth that has, and is taking place in Farmington," Nutter said.

TRUSTEE R. JACK Inch praised the administration for its quick action, saying he had received comments from both the community and school staff about the unexpected increases. "This action is very appropriate," he said.

As Nutter was counted students Friday, those working in the finance department where the district's stu-

dent busing is coordinated were busy obtaining extra, used buses to keep the district's transportation system running with the additional students.

Farmington was one of several districts that needed more buses to keep the fleet going until new ones arrive, Deputy Superintendent Michael Flanagan said.

"FRIDAY . . . we realized the extra number of kids had impacted our buses and that the traffic congestion had caught up with us," Flanagan said. He cited as an example, one of the shuttle buses running between

high schools had an average 10-15 minute wait to make a turn.

"There's been a tremendous change in a very short time," he said about the area roads. "It would not be an exaggeration to say its bringing our transportation system to a halt in some areas."

An additional burden to Flanagan's department was the resignation in August of administrative assistant Scott Bacon, who went to Huron Valley Schools to accept an assistant superintendent's position. Bacon coordinated the district's bus routing.

New bleachers scheduled

New bleachers will soon be the order of the day on fields at the three Farmington high schools.

Miracle Recreation Equipment Co. of East Lansing was awarded the low bid of \$52,356 on Tuesday night by the Farmington school board.

Bids for the project were opening early in the meeting. Delivery was quoted at four-five weeks. Installation will depend on sports schedules, athletic director Ron Holland said.

Eight vendors bid on the project.

which will involve removal of old bleachers and delivery and installation of the new bleachers.

Miracle Recreation Equipment Co. of East Lansing was awarded the low bid of \$52,356 on Tuesday night by the Farmington school board.

Bids for the project were opening early in the meeting. Delivery was quoted at four-five weeks. Installation will depend on sports schedules, athletic director Ron Holland said.

Eight vendors bid on the project.

Farmington Observer

(USPS 187-840)

Published every Monday and Thursday by Observer & Eccentric Newspapers, 36251 Schoolcraft, Livonia, MI 48150. Second-class postage paid at Livonia, MI 48151. Address all mail (subscriptions, change of address, Form 3569) to P.O. Box 2428, Livonia, MI 48151. Telephone 591-0500.

HOME DELIVERY SERVICE
Newsstand . . . per copy, 25c
Carrier . . . monthly, \$2.00
Mail . . . yearly, \$24.20

All advertising published in the Farmington Observer is subject to the conditions stated in the applicable rate card, copies of which are available from the advertising department, Farmington 33203 Grand River, Farmington, MI (313) 477-5450. The Farmington Observer reserves the right not to accept an advertiser's order. Observer & Eccentric advertisers have no authority to bind this newspaper and only publication of an advertisement shall constitute final acceptance of the advertiser's order.

September CALENDAR

| MONDAY | TUESDAY | WEDNESDAY | THURSDAY | FRIDAY | SATURDAY |
|--------|---------|-----------|----------|--------|----------|
| | 1 | 2 | 3 | 4 | 5 |
| 6 | 7 | 8 | 9 | 10 | 11 |
| 12 | 13 | 14 | 15 | 16 | 17 |
| 18 | 19 | 20 | 21 | 22 | 23 |
| 24 | 25 | 26 | 27 | 28 | 29 |
| 30 | | | | | |

SATURDAY, SEPT. 27
IDENT-CHILD
12 to 4 p.m.



HUNTERS SQUARE
TALLY HALL

SUNDAY, SEPTEMBER 14
BODY BUILDING COMPETITION
12 to 5 p.m.

THURSDAY and FRIDAY
SEPTEMBER 25 and 26
Botsford Hospital
HEALTH AWARENESS FAIR
"Health Talk for Your Good Health"
11 a.m. to 7 p.m.

SATURDAY, SEPTEMBER 27
ETHNIC FESTIVAL
Music, Food, Dancers Meet Hours
FOR MORE INFO
855-3444
14 MILE & ORCHARD LK. RD.
Farmington Hills

Jacobson's

Part-Time Sales Positions
Now Available

Excellent earning potential with splendid working conditions and fringe benefits. No Sundays or Holidays.

Apply in person to the Personnel Department

Jacobson's
336 W. Maple
Birmingham

An Equal Opportunity Employer

PJ's DONUTS CONES • DELI

Our Butter Pecan Rated No. 1 by "People Magazine"

- 68 Varieties of Donuts • Muffins • Brownies
- 32 Premium Flavors of Ice Cream
- 24 Varieties of Deli Sandwiches (Milled Only)
- Beef Patties • Soups • Jensen's Famous Buttermilk

OPEN 24 HOURS • 7 DAYS

COUPON
\$1.00 OFF
A DOZEN
DONUTS
68 Varieties
Valid thru 10/31/86
MT. Not valid on other offers
410 E. 12th St.
Farmington Hills, MI 48034



COUPON
ICE CREAM
132 Premium Flavors
Reg. 45¢ single dip cone
Now 69¢
Valid thru 10/31/86
MT. Not valid on other offers
410 E. 12th St.
Farmington Hills, MI 48034

Wholesale Discounts to Schools, Clubs, Churches, Etc.
3 LOCATIONS

FARMINGTON HILLS
3827 GRAND RIVER
Between Haggerty & 10 Mile
in the Grand Market Square

WALLED LAKE
4533 PONTIAC TRAIL
Between West & Oak Rd.
in the North Square

MILFORD
110 MILFORD RD. AT GM RD.
Next to McDonald's

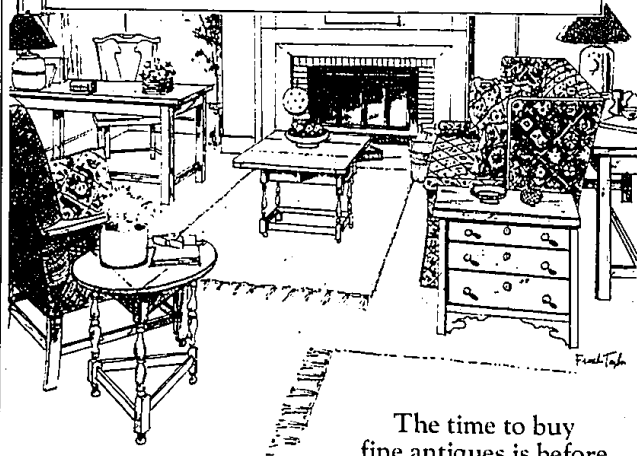
SALE REPRODUCTIONS BY LANE



THE AMERICA COLLECTION

AS FEATURED IN COUNTRY LIVING MAGAZINE

Museum-authenticated "country" furniture reproductions and adaptations — exclusively by Lane.



The time to buy fine antiques is before they become antiques.

NOW SPECIALLY PRICED



Here's a rare opportunity to get tomorrow's heirlooms at a savings today. The "America" collection by Lane. Replicas of some of the best furniture crafted by the early settlers. The only furniture exclusively commissioned and authenticated by The Museum of American Folk Art.

You're not just buying furniture, you're getting a bit of history!

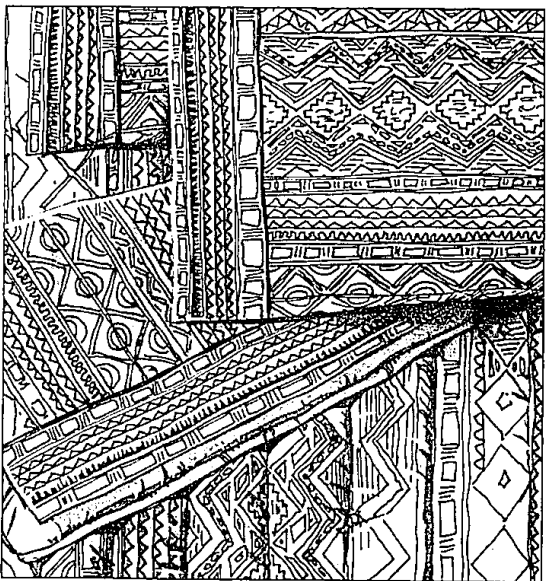


Schrader's
HOME FURNISHINGS
"Family owned & operated since 1907"



111 N. Center St. (Sheldon Road)
Northville
349-1838

Mon., Tues., Sat. 9 to 6;
Thurs. & Fri. 9 to 9;
Closed Wed.



A PRIMITIVE DESIGN

MOGAMBO SHEETS AND BEDSPREADS BY MARTEX™ INSPIRED BY ANCIENT BARK PAINTINGS AND INTRICATE TAPESTRIES

Sheets and pillowcases are an all-over geometric pattern of monotone grey on parchment. The four-inch attached hem and bedspread are of the same pattern turned into full color of muted spice tones. Polyester/cotton percale. Sheet sets include: 1 flat, 1 fitted, 2 cases, Twin (1 case), \$29; Full, \$45; Queen, \$59; King, \$73. Bedspreads: Twin, \$53; Full, \$63; Queen, \$85; King, \$95.

Jacobson's

We welcome Jacobson's Charge Card or The American Express® Card.

Shop until 9 p.m. on Thursday and Friday
Until 6 p.m. on Monday, Tuesday, Wednesday and Saturday

ANN ARBOR BIRMINGHAM DEARBORN EAST GRAND RAPIDS EAST LANSING GROSSE POINTE JACKSON KALAMAZOO ROCHESTER SAGINAW TOLEDO