

Shorebirds are tough to identify

By Timothy Nowicki
special writer

SHOREBIRDS, sandpipers or "waders," as the British say, are a diverse group of birds. Shorebirds are a fascinating group, but they provide an identification challenge to all who watch them.

There are 214 species throughout the world, 36 of which can be seen in southeastern Michigan. They represent a wide range of sizes and shapes. Some species measure as long as 22 inches, others a mere five inches.

In this group, there are species that have bills straight, up-curved, down-curved and even curved to the side.

BIRDS IN general are not difficult to identify because they have unique plumage patterns and coloration. Shorebirds, however, are notorious for being difficult to identify.

Several species are similar in coloration and size, requiring birders to check all the field marks (distinguishing characteristics) before making positive identification.

Two groups that pose these problems are the yellowlegs and dowitchers.

Yellowlegs come in two species — greater and lesser. As their names imply, one is larger than the other, but unless the two are standing next to each other, it's difficult to distinguish between them. Greater yellowlegs have a longer bill than the lesser and produce a call that comes in triplets.

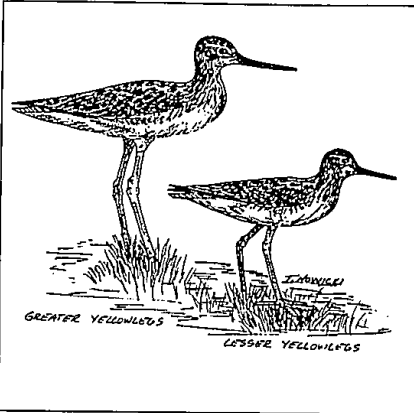
THE TWO dowitcher species that can be seen along muddy shorelines are equally difficult to identify. One is called long-billed, the other short-billed.

Unfortunately, there is a great deal of overlap between the bill lengths of each species, and it is not a good field mark to use. Coloration varies and overlaps, too.

The only really good field characteristic is their vocalizations. Short-bills go "tu-tu-tu" while long-bills go "kek-k."

May and August are the best months to watch shorebirds along the Great Lakes. Pointe Mouillee near Rockwood has suitable habitat for migrating shorebirds because the Michigan Department of Natural Resources controls the water level with dikes.

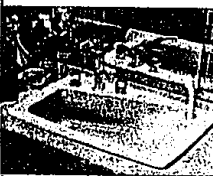
South in Ohio, at Crane Creek State Park and Ottawa National Wildlife Refuge, both east of Toledo, dikes control the water level, too.



Yellowlegs come in two species — greater and lesser. But unless the two are standing next to each other, it's difficult to distinguish between them.

BATH MAGIC

The Versatile Shampoo Center Lavatory...



LADY VANITY™ by KOHLER

Live With The
Luxury
Of
KOHLER

The Ultimate
Shampoo Centre
Complete with
Premium All-Brass
Faucet.

We Have Several of these fine Vitreous China Lavatories And Many Others
Premium **KOHLER** Items Still
Available From Display Inventory

Discounts 30%-50%★
— On Selected Pieces —

We're Moving October 1st
To Our New Location At
332 East Lincoln, Royal Oak

Presently At
520 W. 11 Mile Royal Oak
(1/4 mile E. of Woodward)
Open: Tues. - Fri. 10:00 - 5:30
Sat. 9:30 - 4:00

**WE LOST
OUR LEASE!**



Franklin Gift Gallery

**ALL
NAME
BRAND
ITEMS**

50% OFF
ALL PLACE SETTINGS
CHINA, STAINWARE
AND FLATWARE
— SELECT —
VASES, ICE BUCKETS
ETC.

40% OFF
ALL
TABLE LINENS
SNACK TABLES
— SELECT —
SERVING PIECES

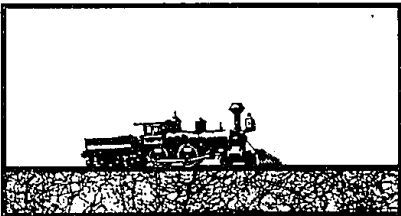
FIXTURES AVAILABLE

**30% OFF - ALL OTHER ITEMS IN STOCK
EVERYTHING MUST GO - ALL SALES FINAL**

32800 Franklin Road
S.E. Corner 14 & Franklin
Franklin • 855-8340

HOURS:
Tues.-Sat. 10:30-5:30; Sun. 12:30-5
Sale Ends Sept. 20th

Fall Antique Show 4 DAYS ONLY



**SEPTEMBER 18-21
DAILY DEMONSTRATIONS**

Traditional Quilting - Identification
Care & Preservation by Xenia Cord

REPAIR SERVICES

Crystal • Lamps • Silver • Porcelain
Pottery • Ivory • Slot Machines

REPLACEMENT SERVICES

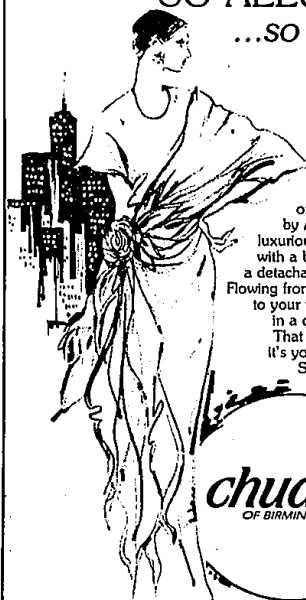
Noritake China • Silver plate • Sterling Silver

SOMERSET — THE MALL

In Troy — Big Beaver Road at Coolidge

Sunday 12-5/Monday, Thursday, Friday 10-9/Other Days 10-6

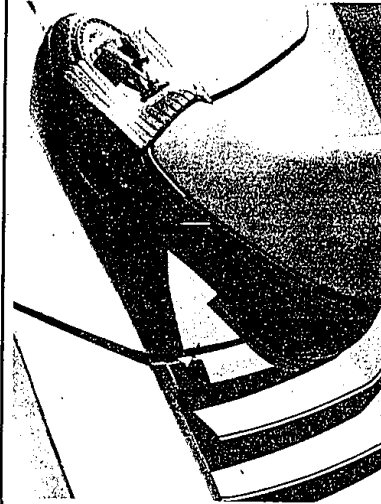
**SO STUNNING
SO ALLURING
...SO ANKO**



Designed for
elegant nights
on the town ...
by Anko. Smooth,
luxurious matte jersey,
with a beautiful touch:
a detachable sarong ...
Flowing from one shoulder
to your waist, gathered
in a cluster of roses.
That Anko look ...
It's yours for tonight.
So stunning ...

chudiks
OF BIRMINGHAM

294 E. Brown Street • 647-1300
Open Daily 10:00 a.m.-6:00 p.m. • Thursday night until 9:00 p.m.



Steps in the right direction. Based on style. Long on comfort. And brought to you by Cole Haan. Here, three from the Fall collection. From the top: the lined nappa leather kiltie with fringed detail and tassel. In black, wine or brown, \$115. The unlined Buffalo leather kiltie in black, brown, red, purple or green, \$92. And the unlined Buffalo leather slip-on with woven vamp, \$92.

In the Designer Shoe Salon.

Friday in Troy, our special representative from Cole Haan will be on hand to assist you with your selections from 11 to 5. Special orders will also be taken at this time. Available in Troy only.

*Saks
Fifth
Avenue*

Somerset Mall, Big Beaver at Coolidge, Troy • Lafayette Town Center, Dearborn