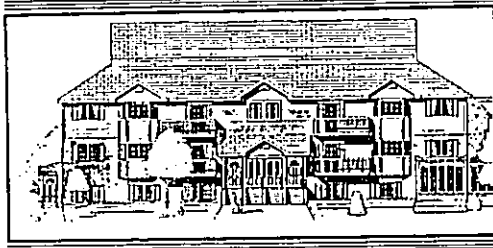


PINEWOOD VILLAGE CONDOMINIUMS In The City Of PLYMOUTH

Priced
From
\$64,900



FEATURING:

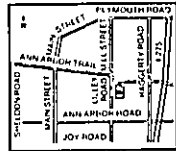
- 1050 sq. ft.
- 2 Bedrooms
- Laundry Room
- Carports
- Central Air
- Soundproofing Package
- Furniture Finished Wood Cabinets in Kitchen & Bath
- Walk to Downtown
- Carpeting
- Large Kitchens
- Balconies on Upper Levels
- Fully Landscaped Grounds
- Self Cleaning Oven
- Brick/Aluminum Exterior
- Storage Area
- Large Living Area
- Wood Windows
- Dishwasher

SALES & INFORMATION

VAN ESLEY
Real Estate

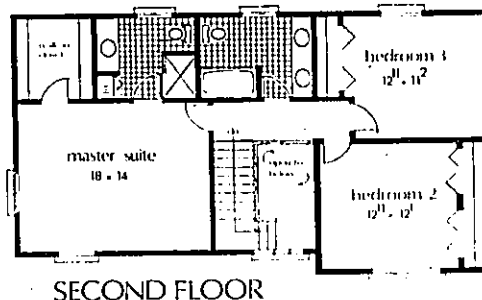
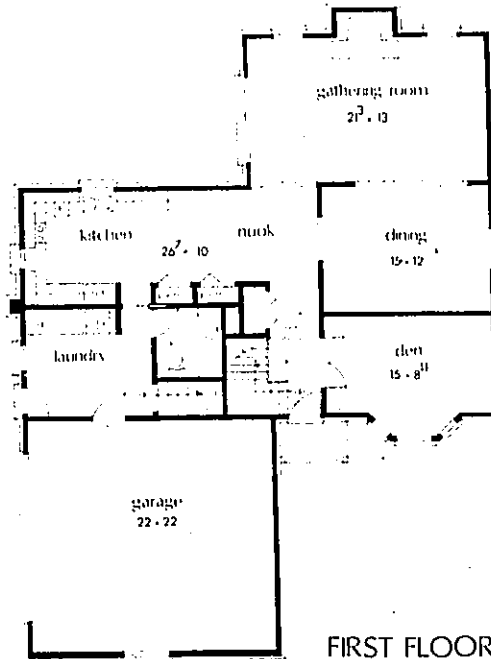
459-4044

Offered by Van Esley Real Estate

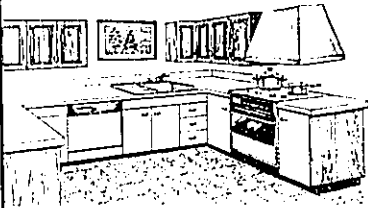


Knottingham

The traditional two-story tudor home by Hemphill and Fett features a two-story foyer with windows overlooking the staircase, a formal dining room, a den with bay windows, a large laundry/mudroom with back door and basement entry. The kitchen has a pantry and large windows. The family room features a fireplace, cathedral ceiling and window doorwall. The master bedroom has a walk-in closet and a large shower in the bath. There are custom mouldings throughout the 2,200-square-foot, three-bedroom, 2½ bathroom home which is in the \$140,00-\$150,000 price range.



DISCOVER the LUXURY of CUSTOM KITCHENS



- Custom Wood Cabinets by HAMPSHIRE
 - Our Own Custom Laminate
 - Stock Cabinets by YORKTOWNE AND MERILLAT
- PRICES START AS LOW AS
\$82⁸⁸ Per Mo.
for 48 months for complete
Kitchen remodeling

BEAUTIFUL BATHS

- Delta Faucets
- Marbleite Vanity Tops
- Kohler Toilets, Tubs and Sinks
- Complete Ceramic Tile Work

PRICES START AS LOW AS

\$55²⁶ Per Mo.

for 48 months for
complete remodeling

Complete Design & Installation Department or Do-It-Yourself



**KITCHEN and BATH REMODELING
FREE ESTIMATES**

Mr. Build
TOTAL PROPERTY SERVICES™
Micamasters

Bank Rates Now
Available



30835 Plymouth Rd. • Livonia, MI 48150 • 427-0350