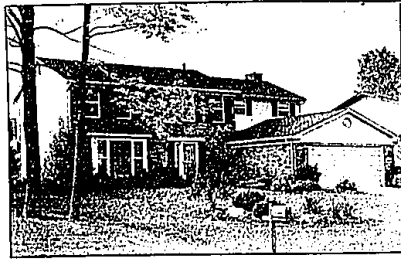


OUR FIRM IS A MEMBER OF THE BIRMINGHAM/BLOOMFIELD BOARD OF REALTORS MULTI-LIST SERVICE • THE METRO MULTI-LIST SERVICE • THE SOUTH OAKLAND COUNTY BOARD OF REALTORS MULTI-LIST SERVICE • THE ROCHESTER BOARD OF REALTORS MULTI-LIST SERVICE • OUR FIRM IS A MEMBER OF THE BIRMINGHAM/BLOOMFIELD BOARD OF REALTORS MULTI-LIST SERVICE • THE METRO MULTI-LIST SERVICE • THE SOUTH OAKLAND COUNTY BOARD OF REALTORS MULTI-LIST SERVICE • THE ROCHESTER BOARD OF REALTORS MULTI-LIST SERVICE



GOLF COURSE SETTING!

"Custom built" 4 bedroom Colonial viewing a wooded setting on the 11th green of Shenandoah Golf Course. Crown moldings, intercom, circle drive, custom redwood deck, gas barbecue, central air, wet bar in family room plus library! Newly listed at \$164,900. TEA-



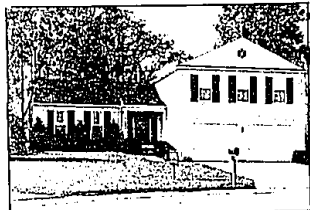
SPACIOUS FAMILY HOME

Featuring 4 bedrooms with walk-in closet in master bedroom. Marbleite vanities in all baths, brick foyer, neutral carpeting, large deck with flower planters. Located in a lovely family neighborhood! Newly listed at \$149,900. VAY-87164



LOVELY COLONIAL RANCH

On a private 2.8 acre setting in charming Franklin. Circle drive, large living room, kitchen with cathedral ceiling, new family room with deck and 3rd bedroom offers built-in bookshelves. Walk-out lower level offers finished rec room with wet bar and fireplace. \$350,000. RAE-83743



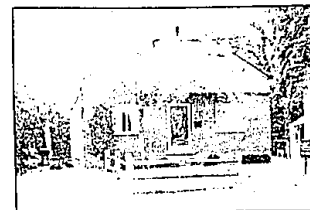
QUAD-LEVEL COLONIAL

Located in desirable Farmington Green West. Backs to creek and commons, slides to pond. Four bedrooms, 2½ baths, family room and a large wood deck. Hurry! Newly listed at \$139,900. GAS-87165



CUSTOM BUILT RANCH

Open floor plan with oak wood floors in bedrooms, natural fireplace, Florida room, partially finished basement and a 2 car garage all on a large lot. Newly listed at \$64,900. LEE-86972



BIRMINGHAM

Enjoy the park across the street from this sharp home. Beautiful window treatments, newer neutral carpeting, 4 bedrooms or 3 with family room and master bedroom has doorwall to deck. \$75,900. DAS-86711



IMMEDIATE OCCUPANCY!

Nice brick ranch on beautiful heavily treed lot. Walk-out lower level, 3 bedrooms, spacious living room and a good location. This home offers alot of potential! Excellent value at \$92,500. SPD-84382



LUXURIOUS BEVERLY HILLS CONDO

The park-like atmosphere compliments this traditional home that has popular advantages of Condominium ownership. Main floor master bedroom and bathroom suite plus 2 additional bedrooms, spacious den and Great room with fireplace. \$269,000. DOR-87101

RALPH MANUEL

ASSOCIATES • REALTORS

851-6900

32961 Middlebelt
Farmington Hills

647-7100

1821 W. Maple
Birmingham

Relocation 1-800 R-MANUEL



- MEMBER OF EMPLOYEE RELOCATION COUNCIL
- MEMBER OF TRANSLO RELOCATION SERVICE

IF YOU ARE MOVING ACROSS THE CITY OR ACROSS THE COUNTRY, OUR RELOCATION DEPARTMENT CAN MAKE YOUR MOVE SMOOTHER.



"ACREAGE IN THE CITY"

Stream, ravine and overlooking a pond give you a great scenic view. Newer home with 3-4 bedrooms, 2 full and 2 half baths, walk-out lower level with jacuzzi and wet bar. Heated barn with full bath, horse stalls and corral! \$275,000. HOD-84864



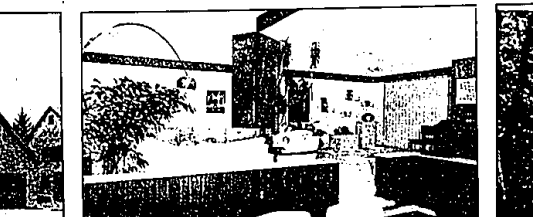
BIRMINGHAM FAMILY QUAD

Offering 4 bedrooms with possible 5th or library on the lower level. Family room with fireplace and wet bar, hardwood floors in bedrooms and situated on a large beautiful lot! Newly listed at \$144,900. WID-87286



CITY OF BLOOMFIELD HILLS

Completely updated end unit featuring new carpet and oak floors, remodeled kitchen and bath with a neutral decor and deluxe features. Move-in condition! \$142,000. STD-86935



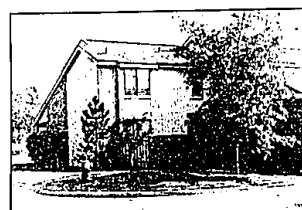
JAMES CONN CONTEMPORARY

A knockout of a home on wooded ravine setting. This 4 bedroom, 3½ bath home with walk-out lower level features vaulted ceilings, skylites, white formica island kitchen, doorwalls on all 3 levels lead to decking and brick patio. Alarm, sprinklers and air! \$279,000. BEV-



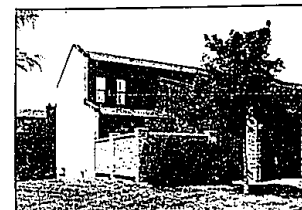
ASSUMABLE MORTGAGE!

Lakefront living and privacy in this 4 bedroom Tudor Colonial. Formal dining room with butler's pantry, finished walk-out, extensive decking and dock on natural wooded lot! \$164,900. GLN-84853



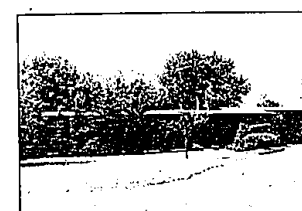
SUPER TOWNHOUSE

Offering a first floor master suite and 2 additional bedrooms, vertical blinds, track lighting, plus washer and dryer. Contemporary flair, sharp unit and a convenient West Bloomfield location. \$141,900 BRR-87019



ROCHESTER TOWNHOUSE

"Hidden Hills Condo" offering a clean decor! This end unit offers 2 bedrooms, 1½ baths, living and dining room, kitchen with appliances, natural fireplace, basement, attached garage and air! \$61,100. WIW-84998



NEAT CONTEMPORARY RANCH

On a private treed lot, 3 large bedrooms, featuring master with full bath, dramatic atrium off living room, family room with fireplace, den, track lighting, cathedral ceilings. Reduced to \$124,900. SPD-87362



GAYLORD AREA

Unique opportunity for owning a 5 bedroom log cabin with 300 ft. on Lake Horizon, while dividends are being earned in your behalf. Enjoy the 5000 acres of land which includes 2 lakes, 2 tennis courts, deer hunting and more. Reduced to \$319,900. LAE-84246

OUR FIRM IS A MEMBER OF THE BIRMINGHAM/BLOOMFIELD BOARD OF REALTORS MULTI-LIST SERVICE • THE METRO MULTI-LIST SERVICE • THE SOUTH OAKLAND COUNTY BOARD OF REALTORS MULTI-LIST SERVICE • THE ROCHESTER BOARD OF REALTORS MULTI-LIST SERVICE • OUR FIRM IS A MEMBER OF THE BIRMINGHAM/BLOOMFIELD BOARD OF REALTORS MULTI-LIST SERVICE • THE METRO MULTI-LIST SERVICE • THE SOUTH OAKLAND COUNTY BOARD OF REALTORS MULTI-LIST SERVICE • THE ROCHESTER BOARD OF REALTORS MULTI-LIST SERVICE