

## exhibitions

### ● KINGSWOOD LOWER GALLERY

"On Common Ground," a collection of works by members of the Cranbrook Academy of Art Printmaking Department continues through Nov. 3. The gallery is open during school hours, 885 Cranbrook, Bloomfield Hills.

### ● TROY ART GALLERY

"The Beautiful World of Japanese Prints" is the gallery's annual show of 18th- and 19th-century woodblock prints. Continues through Nov. 22. These are museum quality prints by Eishi, Hiroshige, Hokusai, Kiyonaga, Kunisada, and a group of rare prints by Sekino. Hours are 11 a.m. to 5:30 p.m. Tuesday-Saturday, 755 W. Big Beaver, Suite 131, Troy.

### ● CADE GALLERY

Solo exhibit on canvas by Carrie M. Nixon, who was born and raised in Birmingham continues through Nov. 13. Regular hours are 10:30 a.m. to 7 p.m. Tuesday-Saturday, 214 W. Sixth St., Royal Oak.

### ● BIRMINGHAM BLOOMFIELD ART ASSOCIATION

Faculty exhibition includes work by more than 50 artists who have earned the respect of students and community. Continues through Nov. 15. Hours are 9:30 a.m. to 4:30 p.m. Monday-Saturday, 516 S. Cranbrook, Birmingham.

### ● IRVING FELDMAN GALLERIES

"Raggedy Circumnavigation" series by Alan Shields continues through November. Hours are 10 a.m. to 5 p.m. Monday-Saturday, 6917 Orchard Lake Road, West Bloomfield.

### ● XOCCHIPILLI GALLERY

Exhibit of new paintings by Lowell Boleau continues through Nov. 15. Regular hours are 11 a.m. to 5 p.m. Tuesday-Saturday, 568 N. Woodward, Birmingham.

### ● DONALD MORRIS GALLERY

"Modern Masters" includes paintings, sculpture and works on paper along with classical African art. The names of the artists read like a museum catalog. Through Nov. 12. Open 11 a.m. to 5 p.m. Tuesday-Saturday, 105 Townsend, Birmingham.

### ● CANTOR/LEMBERG GALLERY

New etchings by James Brown, David Salle and John Newman continue on display through Nov. 5. Hours are 11 a.m. to 5:30 p.m. Tuesday-Saturday, 538 N. Woodward, Birmingham.

### ● DETROIT FOCUS GALLERY

A show of Review Committee Selections includes works by Mary Ellen Crook, Deborah First, Theresa Herron and Anat Shifman. Continues to Nov. 7. Hours are noon to 6 p.m. Wednesday-Saturday, 743 Beaubien, Detroit.

### ● PEWABIC POTTERY

Works by John Gill and Christina Bertoni are on display through Nov. 8. Works by Brian Fiorentino and Cynthia Boughner Ramsay are in the Sixteen Gallery and Sylvia Mitchell's sculpture is in the Sculpture Garden. Hours are 10 a.m. to 5 p.m. Tuesday-Saturday, 10125 E. Jefferson, Detroit.

### ● TOWN CENTER GALLERY

Grand opening for the newly expanded gallery includes works by

Cerj, Colnagard, Loch, Mercer and Sandall. Hours are noon to 5 p.m. Monday, 10 a.m. to 5 p.m. Tuesday, 10 a.m. to 4 p.m. Saturday, 3000 Town Center, Suite 45 (near atrium), Southfield.

### ● BROOKFIELD OFFICE PARK

Recent artwork presented by Detroit Artists Market and sponsored by Edin Equities, will continue through Nov. 21. Included in the sale are works by 110 southeast Michigan artists. Exhibit is in 20,000-square-foot space planned by Ford and Earl Associates in the building designed by Yamasaki and Associates. Hours are 11 a.m. to 4 p.m. Wednesday-Saturday, 31500 Northwestern, Farmington Hills.

### ● HABATAT GALLERIES, VENTURE GALLERY

Works by Clifford Hatney and Steven W. Waters are in the upper level gallery, with pieces by W. Stephen Hodder in the first level gallery and ceramic works by Donald Reitz and Nancee Meeker in the Venture Gallery. Continues through Nov. 1. Habitat Gallery is at 29233 Southfield, Lathrup Village.

### ● DETROIT INSTITUTE OF ARTS

"Of Water and Ink: Muramachi Period Paintings from Japan 1392-1568" continues through Nov. 9. Part II runs Nov. 16 to Dec. 14. Many wonderful, fragile treasures from Japan are on display. Comes with a catalog and many related events, 5200 Woodward, Detroit.

### ● D & J BITTKER GALLERY LTD

"Decorative Arts of Japan," is a nice adjunctive exhibition to the "Of Water and Ink" at DIA. This one includes textiles, calligraphy, lacquer boxes and a delightful commentary by the owner, 536 N. Woodward, Birmingham.

### ● THE COMMUNITY HOUSE

Works by the Community House teaching staff will be featured this month 388 S. Bates, Birmingham. They include: Linda Burke, watercolor and mixed media; Monte Nagler, photography; Corinne Haghe, sculpture and prints; Audrey DiMarco, oils, acrylics and pastels; Jo Chiapelli, pen and ink; and Elaine Borruso, calligraphy.

### ● HALSTED GALLERY

Paintings by Theodore Waddell are on display through December. Waddell, a Montana resident, is a rancher who likes to paint. By appointment only, 644-8284, 560 N. Woodward, Birmingham.

### ● WATERFORD FRIENDS OF THE ARTS

"Thirty Years of Contemporary Ceramics" includes some favorites such as Toshiko Takaezu and Susan Stephenson along with Alan Vignand, Jean Parsons, Vivika and Otto Heino. Michael Leach Pottery of England and Pottery Mas du Clat of France are also represented. Hours are 7-9:30 p.m. Monday-Thursday, 1415 Crescent Lake Road, Pontiac.

### ● IS INC.

"Points of Reference," exhibit of oil paintings by Nelson Smith, continues through Nov. 5. 1st Entertainment Center, 13 S. Saginaw, Pontiac.

### ● MEADOW BROOK ART GALLERY

"Detroiters Collect: New Generation" continues through Nov. 9. Represented are 31 artists from 30 collections in the Detroit area. Hours are 1-5 p.m. Tuesday-Friday, 2-6:30 p.m. Saturday and Sunday and evenings 7 p.m. through first intermission when there is a theater performance. Oakland University campus, Rochester.

### ● RUBINER GALLERY

Paintings and drawings by Richard Hogan continue through October. This is the first one-person exhibit in this area of works by this New Mexico

artist. His works are in museum collections in Santa Fe, Albuquerque, Nebraska, and Houston. Hours are 10 a.m. to 6:30 p.m. Tuesday-Friday, until 5 p.m. Saturday, 7001 Orchard Lake Road, West Bloomfield.

### ● HILL GALLERY

Drawing and sculpture by Larry Cressman will be on display through October, 161 Townsend, Birmingham.

### ● PARK WEST GALLERIES

Tribal African Art in being done in conjunction with the DIA's Friends of African Art and Channel 56. On display are 64 works from 29 tribes and 12 nations, 29469 Northwestern, Southfield.

### ● COUNTY GALLERIA

Watercolors by Dori LeClere of Bloomfield Hills are on display through Nov. 14. Executive Office Building, 1200 N. Telegraph, Pontiac.

### ● ROBERT KIDD GALLERY

Paintings by Moe Brooker and polychrome earthenware by Thomas Kerrigan are on display through October. Hours are 10:30 a.m. to 5:30 p.m. Tuesday-Saturday, 107 Townsend, Birmingham.

### ● JEWISH COMMUNITY CENTER

Paintings and prints by Judith Rogoff and Benny Schwarz are on display through the month, 6600 W. Maple, West Bloomfield.

### ● CCS - SARKIS GALLERIES

"Women Look at Women," a Library of Congress touring show of works by American women photographers will continue through October. Includes more than 65 photos of American women from the 1890s to the 1970s. Open 9 a.m. to 4 p.m. Monday-Friday, Yamasaki Building, 245 East Kirby, Detroit.

### ● FARMINGTON BRANCH LIBRARY

Exhibit of art by Regina En-

glehardt continues through October. Open during business hours, State and Liberty, Farmington.

### ● SUSANNE HILBERY GALLERY

Show features sculpture of Raoul Hague from Saturday, Oct. 25 to Nov. 22. Hours are 11 a.m. to 6 p.m. Tuesday-Saturday, 555 S. Woodward, Birmingham.

### ● DETROIT INSTITUTE OF ARTS

Poplark Gallery of Pre-Columbian art opens to the public. This gallery, with its collection of traditional arts of African, Oceanic and New World cultures, is named for the Birmingham couple who underwrote this new main floor gallery, Woodward at John R.

### ● O'NEILL POTTERY

Country theme pottery is on display through January. Hours are 10 a.m. to 5 p.m. Monday-Saturday, 1841 Crooks, Rochester.

### ● U-M MUSEUM OF ART

"Albert Kahn: Architectural Studies" and "Oriental Screens from the Permanent Collection" are on display, 525 S. State at South University, Ann Arbor.

### ● CRANBROOK ACADEMY OF ART MUSEUM

Work by Cranbrook Academy artists-in-residence is on display in the lower gallery, including Gary Griffin, Michel Itali, Dan Hoffman, Gerhardt Knodel, Graham Marks, Katherine and Michael McCoy, Steve Murakishi, George Ortman, Roy Slade and Carl Toth. Continues through Oct. 26. Hours are 1-5 p.m. Tuesday-Sunday. Admission charge. 500 Lone Pine, Bloomfield Hills.

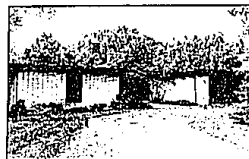
### ● SCHWEYER-GALDO GALLERIES

One-man show of steel and marble sculpture by Jay Lefkowitz will continue through Oct. 25, 29 W. Lawrence, Pontiac. Hours are 11 a.m. to 4 p.m. Tuesday-Saturday.



## Merrill Lynch Realty

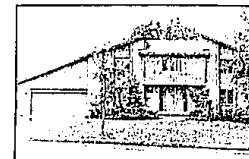
## COME EXPLORE....Many Opened 2-5



**OPEN SUNDAY, 4 Bedroom Contemporary Ranch** nestled in the woods. Very private treed yard, quality built with cathedral ceilings in foyer, driftstone fireplace and screened porch. Executives Delight. \$194,500 626-9100



**NEW CONSTRUCTION** in this 3 bedroom Cape Cod in Farmington Hills. Ultimate in living with 100% wool carpeting, vertical blinds, large deck and special lighting throughout. \$212,000 626-9100



**STUNNING CONTEMPORARY** with every amenity you want. Impressive ceramic foyer, gorgeous view of wooded yard, skylight in gourmet kitchen and balcony overlooking great room. Simply Marvelous. \$249,900 851-8100



**ONE OF A KIND Cape Cod** backing to woods features neutrals, stained glass windows, oak flooring, French doors and a gorgeous deck. A special home in immaculate condition. \$165,500 626-9100



**OPEN SUN, 5975 Springwater - N. of Maple-E. of Orchard Lake. QUALITY ABOUND!** Custom colonial sets on heavily wooded, private lot in West Bloomfield. Comfortable sun porch, large deck and stunning circular staircase are extremely attractive. \$189,900 626-9100



**FOUR BEDROOM West Bloomfield** home boasts heated spa off master bedroom, extensive use of fencing and decking, Bruce flooring and pool. Upper Strals Lake privileges. \$142,500 626-9100



**BEAUTIFULLY maintained ranch** with 2 fireplaces, country style kitchen, delightful Florida room, large finished basement, plentiful storage and formal dining room. \$119,800 851-8100



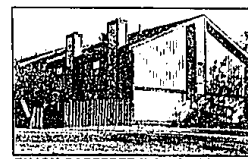
**STUNNING ranch** in Walled Lake, 3 bedrooms, new carpet throughout, family room, fireplace and deck overlooking deep canal to Wolverine Lake. Breakfast nook, library/study and more. \$115,700 851-8100



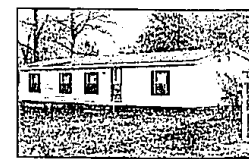
**BLOOMFIELD Cape Cod. Offers** carpeting, window treatments, breakfast area and 3 full baths. Enjoy the nice treed lot with fenced backyard. A perfect family home. \$99,900 626-9100



**LOCATED ON A beautiful tree-lined street**, this 3 bedroom tri-level boasts newer kitchen, plush neutral colors, vertical blinds, natural fireplace and so much more! \$99,900 626-9100



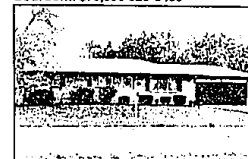
**ENJOY CAREFREE living** in this spectacular townhouse style condo. Many features include Italian tile floor in kitchen, family room and foyer, finished Birchwood cabinets in kitchen, natural fireplace and oak floors in 3rd bedroom. \$79,900 626-9100



**THREE BEDROOM home** is priced to sell. Lake access and a one-of-a-kind place to live with 3 bedrooms, master bedroom with walk-in closet and new appliances. \$69,000 626-9100



**COUNTRY SETTING** yet close to shopping and expressways. Enjoy the deck, porch, brick fireplace and updated kitchen. Great alternative to a condo or ideal starter home. \$68,500 626-9100



**SPACIOUS Union Lake ranch** with tree floor plan. Boasting country kitchen with double oven, full basement, beautifully finished wet bar plus two additional rooms, central air and large treed lot. 3 sizeable bedrooms. \$58,900 851-8100



**CHARM & HISTORY** is in this Farmington farm house. Features 2 bedrooms, hardwood floors, new windows in bedroom and bath. Adorable starter home in lovely neighborhood. \$69,000 851-8100

## FinnFest plans announced

Next year will be year of double celebration for Detroit area Finns. Not only will they be celebrating the 150th anniversary of Michigan's statehood, they will also have the opportunity to commemorate the 70th anniversary of Finland's independence — right in their own backyard. That backyard is Schoolcraft College in Livonia, which happens to be located in the midst of the largest concentration of Finns in southern Michigan. For that reason, Schoolcraft will host FinnFest '87, a sporting and cultural festival, which will attract Finns from across the country.

As part of the cultural events, FinnFest committee members are planning an exhibition of Finnish art and crafts and are seeking exhibitors. If you are a Finnish-American, and are interested in displaying your art or would like to demonstrate a craft, write to: FinnFest '87, Chairman Art and Crafts Committee, P. O. Box 169, Farmington 48024.



## Ferguson in recital

Ray Ferguson, organist of the Detroit Symphony Orchestra, will be presented in recital at Detroit's Metropolitan Methodist Church at 8 p.m. Friday. Free, supervised and lighted parking is available adjacent to the church, located on Woodward, five blocks north of Grand Boulevard. For more information, call 875-7070. At the Merton S. Rice Memorial organ, Ferguson will have at his command over 7,000 pipes and five manuals. The organ is the largest church organ in the Midwest U.S.

BIRMINGHAM/BLOOMFIELD	FARMINGTON HILLS	TROY	ROCHESTER	WEST BLOOMFIELD
1520 N. Woodward (at Long Lake Rd.) 646-6000	3040 Northwestern at 15 Mile Rd. 626-9100	5017 Rochester Rd. at Long Lake Rd. 689-8900	1000 W. University (at Macomber Press) 651-8850	4315 Orchard Lake Rd. at Lone Pine Rd. 851-8100