

OUR FIRM IS A MEMBER OF THE BIRMINGHAM/BLOOMFIELD BOARD OF REALTORS MULTI-LIST SERVICE • THE METRO MULTI-LIST SERVICE • THE SOUTH OAKLAND COUNTY BOARD OF REALTORS MULTI-LIST SERVICE • THE ROCHESTER BOARD OF REALTORS MULTI-LIST SERVICE • OUR FIRM IS A MEMBER OF THE BIRMINGHAM/BLOOMFIELD BOARD OF REALTORS MULTI-LIST SERVICE • THE SOUTH OAKLAND COUNTY BOARD OF REALTORS MULTI-LIST SERVICE



"OWNER DESIGNED - EYON BUILT IN 1981"
3.9 acres with secluded woods and natural spring-fed pond in the City of Bloomfield Hills with 1300 sq. ft. on the River Rouge! This Impressive 4100 sq. ft. home offers 4 bedrooms, 3½ baths, 2 fireplaces, oak floors, skylights, cold storage and a fantastic 37 ft. lap pool. Reduced to \$569,900. BAN-86265



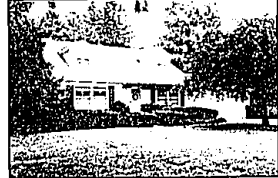
"FRANKLIN HILLS OF BLOOMFIELD"
Final phases under construction. Custom Cluster units nestled on 3 cul-de-sac settings among trees and landscaping all set around a private park. Luxurious living in a contemporary design. Bloomfield Hills schools and malling. Developed by Horbert Lawson, Inc. \$295,000. W. off Franklin and S. of Long Lake Rd.



OPEN SUNDAY 2-5
DRAMATIC CONTEMPORARY!
Step into the 2-story foyer and drama surrounds you. The spacious Great Room features cathedral ceiling, wet bar and fireplace, the large dining room offers hardwood floor and gorgeous lighting, plus a neat kitchen with Jenn-Aire. Cul-de-sac lot with Birmingham Schools! \$294,500. 6145 Hickory Tree Tr., S. off Walnut Lk. and E. of Inkster.



OPEN SUNDAY 2-5
LARGE SPRAWLING QUAD
On rolling lot in Woodcreek Farms. Large kitchen with wood Grabb cabinets and 31 x 15 family room with beamed ceiling, fireplace and wet bar. \$199,900. 28126 Harwich Dr., N. of 12 Mile and E. of Middlebelt.



BEVERLY HILLS BEAUTY
Expanded Cape Cod situated on a secluded street on a lovely lot. First floor master suite plus 3 large bedrooms upstairs, slate foyer, hardwood floor, large living room and a family room. \$179,000. ROR-86611



RALPH MANUEL

ASSOCIATES • REALTORS

851-6900

32961 Middlebelt
Farmington Hills

647-7100

1821 W. Maple
Birmingham

Relocation 1-800 R-MANUEL



• MEMBER OF EMPLOYEE RELOCATION COUNCIL •

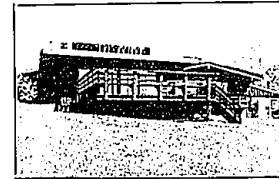


• MEMBER OF TRANSLO RELOCATION SERVICE •

IF YOU ARE MOVING ACROSS THE CITY OR ACROSS THE COUNTRY, OUR RELOCATION DEPARTMENT CAN MAKE YOUR MOVE SMOOTHER.



BLOOMFIELD HILLS RANCH
Featuring 3 bay windows, 2 fireplaces, cathedral ceiling, family room with fireplace and indirect lighting, hardwood floors in bedrooms, large master suite with bay window, bath and dressing room. \$205,000. ECO-87591



MAIN STREET EXPOSURE
And convenience with almost 2 acres of private, wooded nature area. Large family home with an in-law suite offering a screened porch, kitchen and separate entrance. Circle drive and 3 car garage. \$175,000. MAE-80643



NORTH FARMINGTON
Gracious Colonial with nearly 3000 sq. ft. on well landscaped lot boasts large beamed family room with brick fireplace, den, rec room, 5 bedrooms, side entrance garage and a 51' patio. Lots of warmth! \$159,900. STE-86492



IMMEDIATE POSSESSION
Located in desirable Chelsea Village! Contemporary home with 4 bedrooms, 2½ baths, studio ceiling in Great Room, formal dining room, library with desk and shelves. Wet bar, ceramic foyer and more! \$194,900. CHM-82557



ROCHESTER HILLS CONDO
Clean and neutral with beige carpets and white walls. Private courtyard entrance, 1 car attached garage, fireplace dining "L", living room, central air, large kitchen with eating area and all appliances. \$91,100. WIW-87840



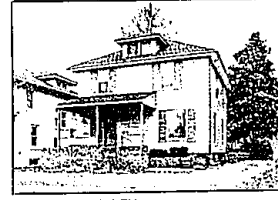
"VIEWS FOR ALL SEASONS"
Gracious Colonial nestled amongst treed setting. Features open floor plan, large foyer, cathedral ceiling enhancing living room and dramatic family room with doorway leading to wood deck. \$148,900. OLD-86594



ROLLING OAKS BEAUTY
Spacious 4 bedroom Colonial in prime area of Farmington Hills. Premium site backs to commons park. Studio ceiling in library, ceramic tile foyer, kitchen and powder room. Neutral decor. Reduced to \$163,900. HIH-86354



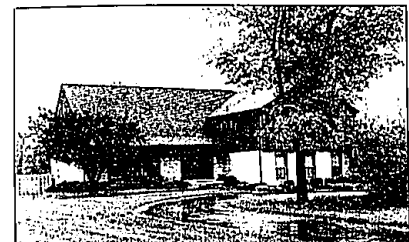
IN-TOWN RANCH
Cute 3 bedroom Birmingham ranch is decorated in earth tones. Recent improvements include newer furnace, central air, updated kitchen, fenced yard and 2½ car garage. Walk to shopping. \$99,900. SHM-80755



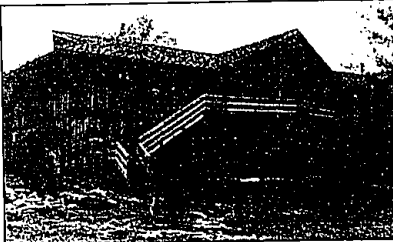
IN-TOWN DUPLEX
This walk-to-Birmingham Duplex is now on the market offering a prime address in an area of high demand. Separate entrances! Call today for more information and immediate showing. Reduced to \$149,900. BRN-78870



OPEN SUNDAY 1-4
WALNUT LAKE PRIVILEGES
Dutch Colonial offers a first floor bedroom plus 4 additional bedrooms upstairs. Beautiful hardwood floors, paneled library and land contract! \$134,900. 2499 Horseshoe, S. of Walnut Lk. and W. of Inkster.



GRACIOUS LIVING
This custom built 4 bedroom home offers all the amenities. Master bedroom has a fireplace and sitting room, formal dining room, family room with wet bar, sun porch and finished rec room are ready for entertaining. Professionally landscaped with beautiful pool and complete privacy. \$324,900. WAT-87728



LAKEFRONT IN METAMORAL
Vacation at home in this custom lakefront Contemporary in the horse country of Metamora! Almost 800 feet of lake frontage on a treed, secluded 7 acre parcel of land with an indoor pool! Vast window expanses bring the out-of-doors in. Interior decorator's spectacular residence. Offered at \$280,000. WAD-84245



OLDE WORLD CHARM
All the modern conveniences make this renovated Barn one-of-a-kind. Remodeled kitchen and baths, fieldstone fireplace, hardwood floors, plus Guest house on 2.6 acres with Birmingham Schools and 4 car garage. Newly decorated rooms give this quaint home great appeal. Must see to appreciate! \$269,000. BIM-86186

LIST SERVICE • THE SOUTH OAKLAND COUNTY BOARD OF REALTORS MULTI-LIST SERVICE • THE ROCHESTER BOARD OF REALTORS MULTI-LIST SERVICE • OUR FIRM IS A MEMBER OF THE BIRMINGHAM/BLOOMFIELD BOARD OF REALTORS MULTI-LIST SERVICE • THE SOUTH OAKLAND COUNTY BOARD OF REALTORS MULTI-LIST SERVICE