

exhibitions

LIT GALLERY

Thursday, Nov. 6 — "On Assignment," an exhibition of photographs by Free Press photographer Tony Spina is featured at the Lit School of Architecture Gallery, 21000 W. 10 Mile, Southfield. Opening reception for DIT and LIT alumni set for 8 p.m. Nov. 6. Continues through Dec. 12. Hours are 8 a.m. to 5 p.m. Monday-Friday.

COMMUNITY ARTS GALLERY

WSU in Michigan, an invitational alumni exhibition features 60 works by Wayne State University art graduates in the Community Arts Gallery on the WSU campus, Cass at Kirby. Continues through Nov. 21. Hours are 9 a.m. to 5 p.m. weekdays, 1 to 4 p.m. weekends.

55 PETERBORO

"55 Peterboro/A Vision from Hell," features work of a macabre and disturbing nature. Featured are Detroit artist Tim Caldwell, Douglas Seale, Erik Montoya and Windsor artist Michele Otto. Reception set for 6-9 p.m. Friday with a special performance by X-Youth and other video presentations. Continues through Nov. 2. Hours are 2-6 p.m. Thursday-Sunday, 55 Peterboro, Detroit.

SISSON ART GALLERY

Marie Woo's ceramics and Jens Plum's paintings are on exhibit through Nov. 27 at the gallery on the campus of Henry Ford Community College, 5101 Evergreen, Dearborn. No admission charge.

PAINT CREEK

Saturday, Nov. 1 — Rebecca Cook, Martin Hoegsian, and Debra White offer "Three Distinct Views" at the Paint Creek Center for the Arts, 407 Pine, Rochester, through Nov. 21. Hours are 10 a.m. to 5 p.m. Tuesday-Saturday.

FARMINGTON LIBRARIES

Throughout November, Mary Mull exhibits in a one-woman show in the Quiet Room of Farmington Hills branch library, 12 Mile east of Farmington Road, Farmington Hills. Regina Englehardt exhibits at the Farmington branch library, Liberty at State, Farmington. Both can be viewed during regular library hours.

SCHWEYER-GALDO

Friday, Nov. 7 — Patricia A. Quinlan shows recent paintings. Reception from 6-9 p.m. Nov. 7 at the gallery, 29 W. Lawrence, Pontiac.

PONTIAC ART CENTER

Friday, Nov. 7 — "The Art of Dining" is served up by a group of functional ceramists including Sue Brightheart of Sultons Bay, J.B. Rensen of Ann Arbor, Kathryn Sharbaugh of Holly, Alan Vigland of Benzonia, Joyce and David Petrakovich of Boon. Continues through Dec. 23. Opening reception 6-8 p.m. Nov. 7 at the Center, 47 Williams, one block west of W. Wide Track Drive and one block south of Huron, Pontiac. Open to the public; free. Hours are 9 a.m. to 5:30 p.m. Tuesday-Saturday.

D & J BITTNER GALLERY

Works by Al Held, Judy Pfaff, Alex Katz and Bryan Hunt and selections from a Japanese woodblock series at the gallery, 536 N. Woodward, Birmingham, through Nov. 28. Hours are 11 a.m. to 5:30 p.m. Tuesday-Saturday.

RESTAURANT DUGLASS

Richard Kozlov's new series "Flower Paintings" and some of his popular "Large Ladies" are on exhibit through Nov. 9 at 29269 Southfield Road, north of 12 Mile, Southfield.

GRYPHON GALLERY

Friday, Nov. 7 — 20th century woodcuts, an exhibit featuring some works dating from 1899, on exhibit, 99 Kercheval, Grosse Pointe Farms. Hours: 11 a.m. to 6 p.m. Tuesday-Saturday.

Saturday. Opening reception: 4-8 p.m. Nov. 7 and 8.

MIDLAND CENTER FOR THE ARTS

Sunday Nov. 2 — The Midland Art Council's 28th annual mid-Michigan Exhibition at the Center for the Arts, 1801 W. St. Andrews Street, Midland, through Nov. 29.

ARTSPACE

Afro-Brazilian artifacts from the Hoffenberg Collection are featured through Nov. 22, 574 N. Woodward, Birmingham. Hours are 11 a.m. to 5:30 p.m. Tuesday-Saturday.

FEIGENSON GALLERY

Works by Ann Mikolowski are shown in "Land, Sky and Lakescapes" through Nov. 15, 310 Fisher Building, Detroit. Hours are 11 a.m. to 5 p.m. Tuesday-Saturday.

PRINT GALLERY

Will Moses, great grandson of Grandma Moses, is a fourth generation artist of this famous family. He also does folk art paintings. His show continues through mid-December, 29203 Northwestern, Southfield.

ARNOLD KLEIN GALLERY

Rural studies, drawings and paintings by Detroit WPA artist, Henry Bernstein continue through Nov. 22. Opening reception 2-5 p.m. Saturday, 4520 N. Woodward, Royal Oak.

PIERCE STREET GALLERY

Photographs by Dancy Kane and Lynn Geesaman continues through Nov. 29. Both have had works published in many magazines and major book collections. Hours are 11 a.m. to 5 p.m. Wednesday-Saturday, 217 Pierce, Birmingham.

DETROIT GALLERY OF CONTEMPORARY CRAFTS

Festive Table show is a collection of decorative and functional crafts for dining. Continues through Nov. 15. Hours are 11 a.m. to 5 p.m. Monday-Saturday, 301 Fisher Building, Detroit.

DETROIT ARTISTS MARKET

"Collage and Variations," is composed of works by 37 artists and was curated by Mary Jane Bigler. Continues through Nov. 14. Color photography in the upper gallery. Hours are 11 a.m. to 5 p.m. Tuesday-Saturday, 1452 Randolph, Detroit.

PRESTON BURKE GALLERIES, INC.

Works by Chuang Cho, Jan Richardson, Christy Carleton, Karina Cavat, Manuel Gentes, Nancy Louise Jones and Nancy E. Bowen are on display through Nov. 15. Hours are 9 a.m. to 5 p.m., 240 E. Grand River, Detroit.

KINGSWOOD LOWER GALLERY

"On Common Ground," a collection of works by members of the Cranbrook Academy of Art Printmaking Department continues through Nov. 3. The gallery is open during school hours, 885 Cranbrook, Bloomfield Hills.

TROY ART GALLERY

"The Beautiful World of Japanese Prints" is the gallery's annual show of 18th- and 19th-century woodblock prints. Continues through Nov. 22. These are museum quality prints by Eishi, Hiroshige, Hokusai, Kiyonaga, Kunisada, Kuniyoshi and a group of rare prints by Sano. Hours are 11 a.m. to 5:30 p.m. Tuesday-Saturday, 755 W. Big Beaver, Suite 131, Troy.

CADE GALLERY

Solo exhibit oils on canvas by Carrie M. Nixon, who was born and raised in Birmingham, continues through Nov. 13. Regular hours are 10:30 a.m. to 7 p.m. Tuesday-Saturday, 214 W. Sixth St., Royal Oak.

BIRMINGHAM BLOOMFIELD ART ASSOCIATION

Faculty exhibition includes work

by more than 50 artists who have earned the respect of students and community. Continues through Nov. 15. Hours are 9:30 a.m. to 4:30 p.m. Monday-Saturday, 1516 S. Cranbrook, Birmingham.

IRVING FELDMAN GALLERIES

"Raggedy Circumnavigation" series by Alan Shields continues through November. Hours are 10 a.m. to 5 p.m. Monday-Saturday, 6917 Orchard Lake Road, West Bloomfield.

XOCHIPILLI GALLERY

Exhibit of new paintings by Lowell Bolleau continues through Nov. 15. Regular hours are 11 a.m. to 5 p.m. Tuesday-Saturday, 568 N. Woodward, Birmingham.

DONALD MORRIS GALLERY

"Modern Masters" includes paintings, sculpture and works on paper along with classical African art. The names of the artists read like a museum catalog. Through Nov. 12. Open 11 a.m. to 5 p.m. Tuesday-Saturday.

urday, 105 Townsend, Birmingham.

CANTOR/LEMBERG GALLERY

New etchings by James Brown, David Salle and John Newman continue on display through Nov. 5. Hours are 11 a.m. to 5:30 p.m. Tuesday-Saturday, 538 N. Woodward, Birmingham.

DETROIT FOCUS GALLERY

A show of Review Committee Selections includes works by Mary Eileen Croci, Deborah First, Theresa Herron and Anat Shifan. Continues to Nov. 7. Hours are noon to 6 p.m. Wednesday-Saturday, 743 Beaubien, Detroit.

PEWABIC POTTERY

Works by John Gill and Christina Bertoni are on display through Nov. 8. Works by Brian Fiorentino and Cynthia Boughner Ramsay are in the Stratton Gallery and Sylvia Mitchell's sculpture is in the Sculpture Garden. Hours are 10 a.m. to 5 p.m. Tuesday-Saturday, 10125 E. Jefferson, Detroit.

TOWN CENTER GALLERY

Grand opening for the newly expanded gallery includes works by Cerj, Coignard, Loeb, Mercier and Sandall. Hours are noon to 5 p.m. Monday, 10 a.m. to 5 p.m. Tuesday-Friday 11 a.m. to 4 p.m. Saturday, 3000 Town Center, Suite 45 (near atrium), Southfield.

BROOKFIELD OFFICE PARK

"Other Spaces," an exhibition of recent artwork presented by Detroit Artists Market and sponsored by Ekin Seittica, will continue through Nov. 21. Included in the sale are works by 110 southeastern Michigan artists. Exhibit is in 20,000-square-foot space planned by Ford and Earl Associates in the building designed by Yamasaki and Associates. Hours are 11 a.m. to 4 p.m. Wednesday-Saturday, 31500 Northwestern, Farmington Hills.

HABATAT GALLERIES

Works by Clifford Rainey and Steven I. Weinberg are in the upper level gallery, with pieces by W. Sie-

phen Hoddert in the first level gallery and ceramic works by Donald Reitz and Nancee Meeker in the Venture Gallery. Continues through Nov. 1. Habatat Gallery is at 28235 Southfield, Lathrup Village.

DETROIT INSTITUTE OF ARTS

"Of Water and Ink: Muramachi Period Paintings from Japan 1592-1568" continues through Nov. 9. Part II runs Nov. 16 to Dec. 14. Many wonderful, fragile treasures from Japan are on display. Comes with a catalog and many related events, \$200 Woodward, Detroit.

HALSTED GALLERY

Paintings by Theodore Waddell are on display through December. Waddell, a Montana resident, is a rancher who likes to paint. By appointment only, 644-8284, 560 N. Woodward, Birmingham.

ISIS INC.

"Points of Reference," exhibit of oil paintings by Nelson Smith, continues through Nov. 5, Isis Entertainment Corp., 13 S. Saginaw, Pontiac.



Merrill Lynch Realty



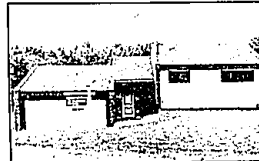
GORGEOUS contemporary lakefront on private paved road. Explore the marvelous 2-story great room, large family room, decking and so much more. Super master suite overlooks lake. \$359,900 851-8100



ELEGANT 2-story Tudor on almost an acre. Features great room, formal dining room, library/study and lake privileges on all sports Walnut Lake. A truly private cozy wooded setting. \$349,000 851-8100



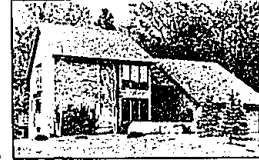
SPACIOUS CONTEMPORARY COLONIAL with 6000 sq. ft. of living space including 5 bedrooms, 4 1/2 baths, lower level walk-out to gorgeous indoor pool and rec room. This special home is filled with custom extras! \$309,500 851-8100



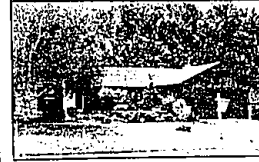
BUILDER/ARCHITECTS very own home - Dramatic and contemporary passive solar quad on choice all sports lake. Voices expansive glass for outstanding viewing of lake, 2-story great room, unique curved walls, solid oak floors and 3 airy bedrooms. South Lyon location. \$198,000 626-9100



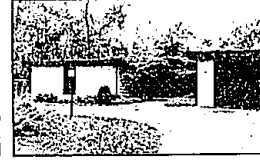
OVERLOOKING FRANKLIN RIVER this maintenance free Cape Cod features hardwood floors, country kitchen, 4 bedrooms plus a jacuzzi in master suite. \$199,900 626-9100



EXCITING BRIDGE STYLE home features 4 bedrooms, garden room, ceramic foyer, 1st floor bedroom with adjacent bath, large kitchen and basement with warming fireplace. Tranquil landscaping. \$239,800 851-8100



HARD TO FIND ranch in Heritage Hills boasts hardwood floors, huge country style kitchen with much storage, super family room with balcony, great for relaxation and spacious garage with handy utility room. COME EXPLORE! \$155,000 626-9100



EXCITING 4 bedroom Contemporary ranch nestled in the woods. Very private treed yard, quality built with cathedral ceilings in foyer, driftstone fireplace and pleasant screened porch. Executives delight. \$194,500 626-9100



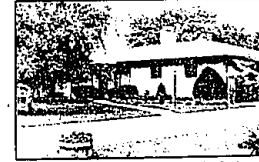
SPACIOUS COLONIAL in prime Northwest Farmington Hills offers move-in condition. Neutral decor, 4 bedrooms, energy saving glass doors, intercom and more. \$147,000 626-9100



OPEN SUNDAY 2-5: Located in desirable "Olde Franklin Town" in Farmington Hills. 4 bedroom, 2 1/2 bath colonial with library. Move-in condition. Priced to sell! \$139,900 851-8100



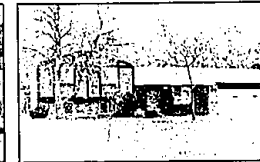
SHARP CUSTOM-BUILT ranch features a chef's delight island kitchen, cathedral ceilings, fireplace in family room and for entertainment - a swimming pool and spa. \$123,000 626-9100



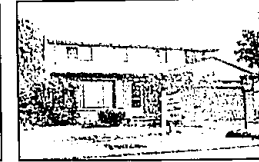
VERY PROFESSIONAL neutral decor in this Farmington ranch. Presenting 3 bedrooms, great room, 1st floor laundry and plentiful storage. \$119,900 626-9100



OAK PARK starter home is priced to sell. Lots of updates include new furnace, kitchen and driveway. Nice home for a young family with 3 bedrooms and carpeting throughout. \$45,500 626-9100



BRICK AND CEDAR QUAD on approximately 1/2 acre features 3 bedrooms, large kitchen and ample storage. All on a park-like setting with lake privileges. \$79,900 626-9100



SHARP COLONIAL of Southfield provides 4 bedrooms, family room with fireplace, doorwall to patio, spacious master bedroom and chef's delight kitchen. \$74,900 626-9100

RELO CENTER



The RELO CENTER - an exciting shopping place for Metropolitan Detroit! It's here that visitors can browse through colorful displays and gather literature, maps and brochures on the quality of life in greater Detroit. No appointment necessary and there's NO CHARGE. If you're moving to greater Detroit or simply moving locally from one area to another, don't make your move without visiting the RELO CENTER!

(313) 355-5111 Toll-Free Outside Michigan 1-800-352-0629 Hours: Mon-Fri. 8:30-5:00 Saturday 10:00-1:00

RELO CENTER American Center Building 27777 Franklin Road Southfield, MI 48034

BIRMINGHAM/BLOOMFIELD 1520 N. Woodward (at Long Lake Rd.) 646-6000 647-5100

FARMINGTON HILLS FRANKLIN 30810 Northwestern at 12 Mile Rd. 626-9100

TROY 5017 Rochester Rd. at Long Lake Rd. 689-8900

ROCHESTER 1000 W. University (in Meadowbrook Plaza) 651-8850

WEST BLOOMFIELD 4316 Orchard Lake Rd. at Lone Pine Rd. 851-8100