

Creative Living

Marie McGee editor/591-2300



Thursday, November 6, 1986 OGLE

(F)1E

Designer turns condo into a little jewel

By Corinne Abelt
staff writer

Interior designer Rae Ruskin's attention to detail is exceptional even in a profession where details are the hallmarks of success.

When she was commissioned to do a Farmington Hills condo by a couple who are third generation jewelers, to their delight she took facets gems as a theme.

That meant designing much of the furniture herself, something she does with imagination and skill. Her designs in furniture and glass, custom-made locally, are cleverly scaled to make the most of what might have otherwise been considered small space.

With careful planning, the condo meets all of the needs of this gregarious couple who entertain friends, children, grandchildren and about 50 fans in their annual Super Bowl party in the lower-level multipurpose room.

The gem theme is most clearly seen in the formal living room as is the gray and burgundy color scheme with accents of black and cream, which continues throughout the first floor. The clients chose these colors and Ruskin worked out many variations to provide excitement, continuity and the illusion of space.

The light burgundy, wool flannel modular pieces in the living room are shaped and arranged to suggest an emerald-cut stone and the pale burgundy lacquer coffee table looks like the ruby in an oversize dinner ring. All were designed by Ruskin and made by Kent Upholstering.

On one wall is a large fabric sculpture in shades of burgundy, grape, gray and black, done on commission by Robert L. Kidd. The wall opposite in the dining room is mirrored so the Kidd sculpture has twice the visibility.

The gray, geometric weave car-

peting extending from the living and dining areas to den, master and guest bedroom establishes a continuity and flow. The foyer, kitchen and breakfast room floors are cream ceramic tile.

The two vertical angle supports for the thick, glass-topped dining room table with the ogee edge, are covered with the same gray fabric as the chairs.

A cream wall covering with touches of burgundy in the kitchen is repeated on the vertical blinds. Ruskin designed the oval butcher-block breakfast table and had the counter tops done in the same butcher-block look.

The queen-size bed and cabinet for the TV in the master bedroom were designed by Ruskin and fabricated by Ashtonian Woodworking & Plastics, which made many of the other pieces. The fitted, quilted, hand-painted cover is from the Rozmallyn Studio in the Design Center of Troy.

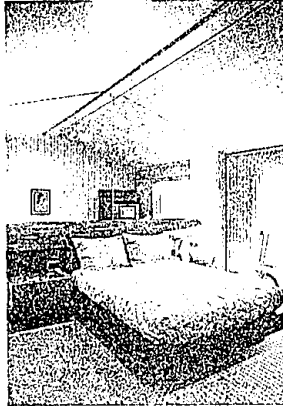
In the lower-level multipurpose room the same carpeting is used, but the color is camel and the seating is all textured black cotton.

The large room is divided into three major areas, the bar, the center seating in front of the fireplace and the modular grouping at the end of the room. The large pull-down TV screen can be easily seen from any seat in the room.

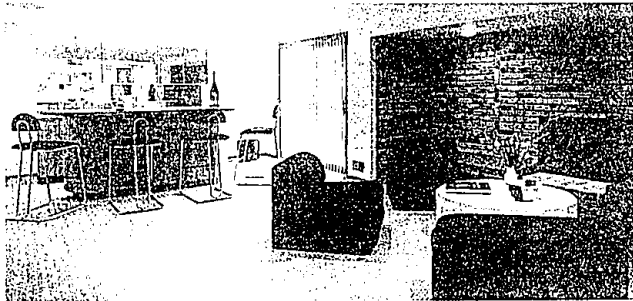
Ruskin designed the long slate-finish console table, which can be opened to serve 10 seated diners or hold a buffet for many more. The repeat of the light oak for the bar again establishes a relationship to the oak used in the kitchen and throughout the home as trim.

Everything is durable, infinitely useable and at the same time glamorous.

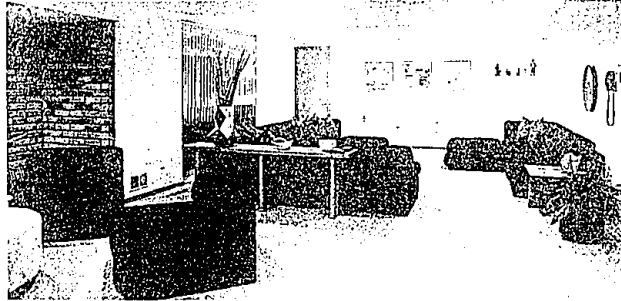
Ruskin had all of the fabrics treated with Fluorel for additional protection.



The burgundy lacquer laminate bed and storage unit (reflected in the mirror) were designed by Rae Ruskin, interior designer. The bed cover is from Rozmallyn of the Design Center. At right, the Ruskin-designed two-seaters have a faceted look as does the lacquer cocktail table. Wall hanging by Robert Kidd is reflected in the mirrored dining room wall.

Staff photos by
Randy Borst

The custom-made oak bar and mirrored cabinets of the multipurpose room are not only striking, they are functional. The host can fix snacks and food as well as drinks for his guests.



The black, camel and taupe color scheme is brightened by a display of posters, carvings and ceramics. Directly above is a pull-down TV screen that covers the entire built-in wall unit.

Tobiasse's art shown at Jewish Book Fair



Unpacking the art of Theo Tobiasse was an exciting experience for Adele Silver, left, and Esther Tuchkloper of the Jewish Community Center staff. Above is a painting titled, "Rachel" and beside it is



"Musique traversée par la force du désir." For 15 years after World War II, Tobiasse was a successful graphic and window designer. Since a major award for painting in 1981, he has been a full-time artist.

Original oils and lithos by Theo Tobiasse are on display at the Jewish Community Center of West Bloomfield through Nov. 15. Tobiasse, now living in southern France, and Chaim Potok, author of "Tobiasse: Artist in Exile," will be the guests for the opening of the Book Fair at 8 p.m. Saturday. Tobiasse's colorful, fanciful works have been shown widely throughout the world. He and his family hid in Paris during the Nazi occupation; he never saw daylight for two years. When he did, the colors were almost blinding. His art reflects these emotional experiences as well as a deep appreciation for bright color. The Jewish Community Center is at 6600 W. Maple, West Bloomfield.

Staff photos by
Jerry Zolynsky