

Farmington High School presents
The
DEMON BARBER OF FLEET STREET
SWEENEY TODAY
A Play
by C. G. Bond
Nov. 13, 14 & 15
8:00 P.M. F.H.S. Auditorium
Tickets \$2.00
Opening Night Benefit
Myasthenia Gravis Foundation

Students stage thriller

Curtain time is 8 p.m. Thursday through Saturday for "Sweeney Todd, the Demon Barber of Fleet Street" in the Farmington High School auditorium, Shawnee west of Orchard Lake Road.

For both the cast and crew, director Craig Hane calls the production "a major undertaking for any high school. It's so advanced, most high schools wouldn't even touch it. And it carries some strong subject matter."

The play, by C. G. Bond, was set to

music and produced on Broadway.

The 19th century melodrama is a murder thriller with both a lot of drama and humor.

The play tells the tale of a revenge-seeking barber who, with the help of a friend, Mrs. Lovett, seeks out and murders half the population of London on his trail to his intended victim.

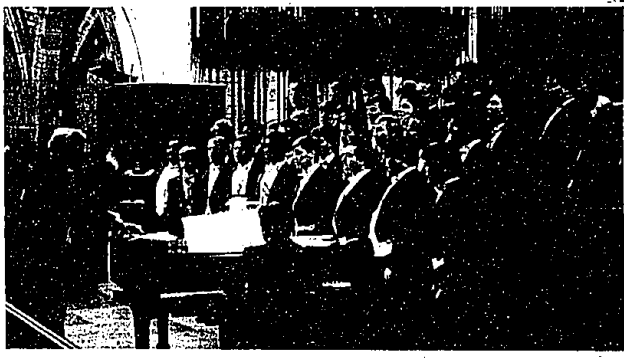
How the two dispose of all the bodies is the mystery.

Following a tradition in play performances at Farmington High, opening night will be a benefit performance. This season students have chosen Myasthenia Gravis Foundation as the recipient.

Tickets are \$3 each, at the door.

Finest in the world

When Wayne State University Men's Glee Club won first prize at the Musical Elsteddod in Llangollen, North Wales, last year, the singers, in effect, were recognized as the finest male choir in the world. Listed on the club's winter-tour agenda is a stop at 4 p.m. Sunday, Nov. 30, in First United Methodist Church of Farmington, 33112 Grand River, when the choir will be in concert with the university's Chamber Singers. Advance tickets at \$5 or \$3 for seniors and students are available by calling the church office, 474-8573.



Detroit Review Club stages annual benefit

The Detroit Review Club's annual luncheon and fashion show, a pre-holiday affair, begins with cocktails at 11 a.m. Wednesday, Nov. 19, Dearborn Country Club.

Mary Lee Balmer of Birmingham is general chairman of the party and is responsible for the door prizes that came from France, England,

Thailand and Ireland as well as New York, Potomac and Harbor Springs.

Modeling the latest fashions from Alvin will be Carol May, Sue Nine, Eleanor Danielson and Nancy Whitehead of Birmingham. Also Carol Harden of Dearborn and Ida Mae Massnick of Grosse Pointe. There will be a "money tree" designed by

Roz Bonino. President Blanche Kefgen will be the official hostess.

Farmington Hills residents on the committee are Jerry Wendt and Ida Krandle.

Donations are \$20 each. Tickets

for people living in the area are available from Dorothy Trussell, 565-0127.

The Detroit Review Club contributed a total of \$2,506.55 to needy organizations during 1985-86.

Volunteer honored

Farmington Community Center's Volunteer of the Month is Marjorie Perry.

She is a charter member of the center's Volunteer Guild and one of the first volunteers to work in The Second Edition, the center's resale shop.

She has been a committee member for both the annual Luncheon with Santa and auction fund-raisers. Most recently, she served on the committee that put together the "Good Enough Cookbook."

"My work at the center makes me feel an integral part of the community," she said.

She is a gardener, with special emphasis on herb gardening, and a student of gerontology at Madonna College.

She and her husband Howard have lived in Farmington for 24 years. She has four children and five grand-children.



Marjorie Perry

Whyne Cherrin's
gilk forest
357-2030
29215 Northwestern Hwy.
Franklin Shopping Plaza
COME IN AND SEE OUR
HOLIDAY IN SILK - BEAUTIFUL FLORAL
POINSETTIA BASKETS AND OTHER NEW
ITEMS FOR THE HOME OR OFFICE.
Holiday Hours:
Mon-Sat. 10:30-5:30
Thurs. 10:30-8:30
Silk Plants, Flowers & Trees
No watering necessary
ALWAYS 20% OFF

Where
there's a need,
there's a way.
The United Way.
Thank you to all who help.

WE'RE FIGHTING FOR
YOUR LIFE
American Heart
Association



WE TAKE
EXCEPTION
TO WHAT
YOUR MOTHER
TAUGHT YOU.

YOU SHOULDN'T EAT
EVERYTHING PUT IN
FRONT OF YOU.

You should avoid foods high in cholesterol. It's a fact, a high blood cholesterol level substantially increases your chances of developing heart disease. By cutting down on fatty, rich foods, you can do yourself a big favor. You could lower your blood cholesterol level and reduce your risk of heart disease.

For more information about a planned and balanced diet, contact your American Heart Association. We'll give you some free advice on how to plan a diet good for life.

BARBARA ROZIER
nail technician
Specializing in "BACKSCRATCHER" Fiberglass nails... promotes healthy nail growth.
NAIL ART • SNAKESKIN • RHINESTONE • STRIPS
COMPLIMENTARY POLISH WITH EXTENSIONS
1/2 OFF PEDICURE with MANICURE thru 1986
28960 Orchard Lk. Rd., F. Hills 828-4810
hair performers appl.

MY PLACE
just for kids
32875 Northwestern Hwy.
Just south of 14 Mile
in Tiffney Plaza
FARMINGTON HILLS
Phone: 737-KIDS
Whether you're at work or play...your children can have fun at MY PLACE, a Social Club (just for kids)™
Quality hourly drop-in child care... "where kids can have fun."
A social club designed with children 2 months-12 years in mind.
Exciting games, toys and computers for school age children as well as preschoolers.
FREE BREAKFAST provided - so you're only a phone call away.
Also visit our Birmingham location
3610 W. Maple (at Lahser)
Next to A & P 540-5702
M-Th 8 am-10 pm
Fri 8 am-1 am
Sat. 9 am-1 am
Sun. 12-8 pm

FRED GROSSMAN GALLERY
requests your presence as our special guest for a major showing of recent works by nationally known
mary vickers
PAINTINGS, PAPER SCULPTURE, GRAPHICS
* Saturday November 15, 1986 7-9 p.m.
* Sunday November 16, 1986 1-5 p.m.
FRED GROSSMAN GALLERY INC.
29528 Northwestern Highway
Sunset Strip
Southfield, Michigan 48034
(313) 350-1686
* Artist in attendance
Refreshments

Jeanne Fishman
ANTIQUE
Show and Sale
NOV. 13-16
Thursday-Saturday 10 a.m.-9 p.m.
Sunday 12-5 p.m.
ORCHARD MALL
Orchard Lake Rd. • N. of Maple • 851-7727

KARAGOSIAN & SONS Jewelers
— CERTIFIED GEMOLOGIST AND CERTIFIED ROLEX TECHNICIAN ON PREMISES —
Rolex Watches at the most competitive prices
NEVER HAS INTEGRITY MEANT SO MUCH TO TECHNOLOGY:
ROLEX
The Rolex Day-Date, self-winding superlative chronometer in 18 kt. gold with matching, hidden clasp President bracelet, pressure-proof down to 330 feet in its impregnable Oyster case.
KARAGOSIAN & SONS Jewelers
2200 Orchard Lk. Rd. (corner of Orchard Lk. Rd. & Middlebelt) West Bloomfield
Telephone: 882-8575