

# Which birds like to eat what

By Timothy Nowicki  
special writer

**C**OOL TEMPERATURES have arrived, daylight hours are shorter, and many of our common birds have moved south. Insect-eating birds must migrate to warmer temperatures in order to find an adequate food supply.

Several species of birds, however, remain in southeast Michigan during the winter. Their food supply is often supplemented by a growing number of human friends who have established bird feeding stations.

A government report published in 1980 estimated that one out of five households purchased wild bird seed. Americans spend about \$170 million annually. In Maine, an estimated one-third of the homes had feeding stations.

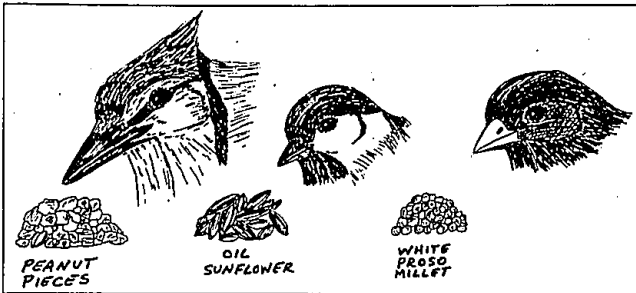
**BIRD FEEDERS** can be as simple as a milk carton with a hole cut in it and a perch attached. Or they can be large, ornate wooden structures, or even specially molded plastic.

To a bird, though, the most important thing is the food offered.

In the Detroit area, the best food to offer winter birds is the oil-type sunflower seed. It is smaller than the common black-striped sunflower seed. Its higher oil content provides more energy for the birds.

Cardinals, chickadees, tufted titmice, house finches, purple finches and even mourning doves prefer oil-type sunflower seeds.

Blue jays eat sunflower seeds but



Blue jays prefer peanut pieces, but generally the best food to offer winter birds is the oil-type sunflower seed. Ground feeders like jun-

cos and song sparrows find white or red pro-

so millet to their liking. Woodpeckers can be attracted by providing a portion of seed. Attaching it to a tree, or suspending it in a onion bag would be suitable.

Once you begin feeding, the birds begin to rely on that source of food, so continue your feeding program to ensure the health of the birds you feed.

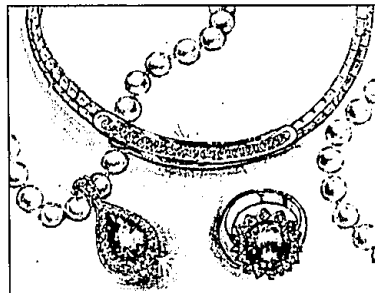
Ground feeders like juncos and song sparrows find white or red

perforated black striped type. Their first preference is peanut pieces. American goldfinches find hulled sunflower seeds, thistle and oil-type sunflower seeds very attractive to eat.

GROUND FEEDERS like juncos and song sparrows find white or red

perforated black striped type. Their first preference is peanut pieces. American goldfinches find hulled sunflower seeds, thistle and oil-type sunflower seeds very attractive to eat.

GROUND FEEDERS like juncos and song sparrows find white or red



## HONORA JEWELRY SHOW

FRIDAY, NOVEMBER 21, 12-7 P.M., BIRMINGHAM

See the Honora Holiday '86 Collection for gifts to delight the special people in your life. The representative will show bracelets, pins, rings, necklaces, earrings, pearl attachments. Precious and semi-precious gems in 14K and 18K gold settings.

**Jacobson's**

Apparel Store

Shop until 9 p.m. on Thursday and Friday  
Until 6 p.m. on Monday, Tuesday, Wednesday and Saturday

**LIONEL**  
IS BACK  
BETTER  
THAN EVER!  
SAVE!!!  
The Doll Hospital & Toy Soldier Shop  
3947 W. 12 Mile • Berkley  
Mon-Sat. 10-5, Fri. 10-4 • 543-3115

## FURNITURE STRIPPING & REFINISHING

INSURANCE REPAIRS

542-4110

Store Hours  
Mon.-Sat.  
8:00 a.m.-3:30 p.m.

21620 Coolidge Hwy.  
Oak Park, MI 48237

FREE Pick-up and Delivery

MICHIGAN RESTORATION SPECIALISTS

**50% OFF**  
A LUNCH OR DINNER  
with purchase of another entrée  
WEST BLOOMFIELD LOCATION  
with this coupon does not include dinner or pizza  
EXPIRES NOV. 25, 1986 • DINE-IN ONLY  
TRY OUR NEW DINNERS  
• Roast Beef • Fish  
• Italian Beef • Chicken  
• Turkey Breast • Veal  
• Center Cut Chop • Burgers  
OPEN 7 DAYS 11am-9pm

**ADVERTISING**  
**WINNERS CIRCLE**  
BY LAURIE KUPP  
M&L

As of September 30, the end of the 1986 fiscal year, the Daily 3 again has proven to be the most popular of all Michigan Lottery games. And, even with wide player support of the bureau's newer games, the Daily 3 is still increasing in popularity statewide. The following answers some of the most frequently asked questions about this game:

Q: Isn't the Daily 3 a lot like the illegal street game?

A: Yes. In fact, the Daily 3 was introduced in 1977 to compete with the illegal game. And, players in the Daily 3 know that it is honest, that all prizes will be paid and can easily be collected at any Daily Game retailer, and that net revenues help finance education in Michigan.

Q: How much was won in the Daily 3 last year?

A: More than \$70 million was won in prizes ranging from \$1-\$500. During several bonus promotions, the top prize was raised to \$600.

Q: How do these bonus payments work?

A: At various times throughout the year, the Lottery will announce that on one night we won't say which during the next week, players will be surprised with a bonus payout. The bonus might take the form of either drawing two sets of numbers and paying on both, or increasing the prize amount awarded on all winning straight bets. For a \$1 wager, the payout would be \$600 rather than the usual \$500, and for a winning \$6 bet, the payout would be \$360 instead of \$300.

Q: When is the next bonus night?

A: Three bonus nights will be held November 10-20 featuring the larger prizes for straight bet winners.

Q: Did I hear about a record Daily 3 payout this year?

A: Yes. On June 10, 1986, the number 123 was drawn. More than 32,000 players won a total of \$1,363,040. This was the equivalent of 189 percent of the amount wagered in the game that day.

Q: How much did the Daily 3 contribute to school aid last year?

A: While the final figures are not tallied yet, the Daily 3 will provide about \$112 million to the State School Aid Fund during fiscal 1986 to help support K-12 education in Michigan.

Q: How do I play the game?

A: Details of how to play the game, the odds and prize amounts are contained in a pamphlet, "The Daily 3 Made Simple," available free at Daily Game retailers. Because her question led to this column, Debbie Banky of Garden City will receive \$50 free "Holiday Cash" instant game tickets.

If you have a Lottery question not yet covered in these monthly columns, send it to: "Winners Circle" Michigan Lottery, P.O. Box 30867, Lansing, MI 48909.

# SKI VALUES at Bavarian Village

just in time for  
**SKIING**  
**BEAUTIFUL SKIWEAR**

save  
20 to 30%

WE'RE SHOWING ALL THE NEW STYLES AND SHOWING SOME GREAT SAVINGS ON SELECTED NEW '87 STYLES TOO. JACKETS, BIBS, BEAUTIFUL SWEATERS & HOT NEW STRETCH PANTS.

**NOW THRU WED. NOV. 26**

DO YOU HAVE EVERYTHING YOU NEED FOR THE SLOPES?

- ☐ JACKETS
- ☐ PANTS
- ☐ BIBS
- ☐ SOCKS
- ☐ MITTENS
- ☐ SUITS
- ☐ PARKAS
- ☐ SKI BAGS
- ☐ WARM-UPS
- ☐ GOGGLES
- ☐ T-NECKS
- ☐ SKI TOTES
- ☐ UNDERWEAR
- ☐ STRETCH PANTS
- ☐ AFTER SKI BOOTS
- ☐ HATS
- ☐ SWEATERS
- ☐ VESTS
- ☐ GLOVES

**FREE NOV. '86 SKI PASS**

FREE SKI PASS TO MT. BRIGHTON ANY DAY IN NOVEMBER, WITH ANY PURCHASE AT ANY BAVARIAN VILLAGE SKI SHOP THIS WEEK WHILE SUPPLIES LAST.

## TERRIFIC SAVINGS ON SKI PACKAGES

FOR ADULTS AND TEENS

• SKIS • BOOTS

POLES • BINDINGS

RETAIL \$399.90

SALE **\$194**

• SK-7 SKIS

• TYROLIA 170 BINDINGS

• LOOK SKI POLES

• DELUXE 1120 CORRA/STAR BOOTS

**DELUXE K-2 SET**

• SKIS • BOOTS

POLES • BINDINGS

RETAIL \$454.90

SALE **\$258**

• K-2 475 SPORT SKIS

• SCOTT SKI POLES

• TYROLIA 177 BINDINGS

• HEILERLING AUTO-COMFORT BOOTS

ROSSIGNOL SET

• SKIS • BOOTS

POLES • BINDINGS

RETAIL \$434.90

SALE **\$228**

• ROSSIGNOL 850 SKIS

• SCOTT METRIC POLES

• SALOMON 8-347 BINDINGS

• NORDICA 318/515 SKI BOOTS

**DELUXE ROSSIGNOL SET**

• SKIS • BOOTS

POLES • BINDINGS

RETAIL \$474.95

SALE **\$278**

• ROSSIGNOL T-5000 SKIS

• ROSSI SKI POLES

• SALOMON 8-447 BINDINGS

• RAICHE/RE-VIVA SKI BOOTS

## SAVE BIG ON TOP PERFORMANCE SKI-BINDING COMBINATIONS

'87 K-2 3500 UNLIMITED \$260.00 SALE  
SALOMON S-647 or MARKER M-36 119.95  
TOTAL 379.95 **\$249**

'87 K-2 4500 UNLIMITED \$285.00 SALE  
SALOMON S-647 or MARKER M-36 119.95  
TOTAL 404.95 **\$299**

**Plus** RECEIVE **\$100** OUR "LET'S GO SKING" BONUS FREE with all Alpine Ski's purchased this week, WHILE SUPPLIES LAST.

'87 ROSSI QUANTUM 707 \$279.00 SALE  
SALOMON S-647 or MULTI BINDINGS 114.95  
TOTAL 393.95 **\$299**

'87 OLIN CRX COMP \$325.00 SALE  
SALOMON S-647 or TYROLIA 480 124.95  
TOTAL 449.95 **\$319**

'87 ROSSI QUANTUM 808 \$299.00 SALE  
SALOMON S-647 or MARKER M-36 119.95  
TOTAL 418.95 **\$339**

'87 DYNASTAR COURSE HP \$320.00 SALE  
SALOMON S-647 or TYROLIA 480-D 124.95  
TOTAL 444.95 **\$343**

'87 DYNASTAR COURSE CLASSIC \$295.00 SALE  
SALOMON S-647 or TYROLIA 480-D 149.95  
TOTAL 444.95 **\$353**

'87 K-2 5500 UNLIMITED \$310.00 SALE  
SALOMON S-647 or MARKER M-46 139.95  
TOTAL 449.95 **\$369**

## SKIERS GIFT IDEA COUPONS

COUPONS NOT VALID ON SALE MDSE. VOID AFTER NOV. 26, 1986

<b>20% off</b> ANY BARRECRATER SKI RACK	<b>\$5 off</b> SKI GRABBER BARRECRATER
<b>\$5 off</b> ANY SKI RETAIL \$13 OR MORE GOGGLE	<b>\$2 off</b> ANY SOCKS
<b>\$3 off</b> ANY T-NECK	<b>\$3 off</b> MASTER SKI LOCK
<b>\$5 off</b> ANY SUN GLASSES RETAIL \$20 OR MORE	<b>\$5 off</b> ANY SKI BAG

**Bavarian Village**

JOIN THE SKI STAFF AT BAVARIAN VILLAGE

WE ARE LOOKING FOR SOME SHARP PEOPLE IF YOU THINK YOU'D BE GOOD AT ALPINE SKIING WE WOULD LIKE TO TALK TO YOU! APPLICATIONS WILL BE ACCEPTED NOW! IMMEDIATE OPENINGS AT ALL STORES

• PART-TIME 20-30 HRS  
• FULL-TIME SEASONAL  
WE CAN FIT YOUR SCHEDULE

**FULL LINE — FULL SERVICE SKI SHOPS**

- BLOOMFIELD HILLS: 2540 WOODWARD at Square Lake Rd. 338-0803
- BIRMINGHAM: 101 TOWNSEND corner of Pierce 644-5950
- LIVONIA/REDFORD: 14211 TELEGRAPH at the Jeffries Fwy. 534-8200
- MT. CLEMENS: 1216 S. GRATIOT 1/2 mile north of 18 MI. 493-3820
- EAST DETROIT: 2230 KELLY between 8 and 9 MI. 778-7020
- ANN ARBOR: 3335 WASHTEEN west of U.S. 23 973-9340
- FLINT: 4261 MILLER across from Genesee Valley Mall 313-732-5580
- SUGAR LOAF: SKI AREA 18 miles N/W of Traverse City 616-228-6700
- FARMINGTON HILLS: 27847 ORCHARD LAKE RD. at 12 MI. 550-8585

OPEN DAILY 10-9pm., SATURDAY 10-5:30, SUNDAY 12-5.

• VISA • MASTERCARD • DINERS • AMERICAN EXPRESS WELCOME