

1,000 adults a year get OU career counseling

Adults considering a career change or returning to the job market may use the free services of the Adult Career Counseling Center at Oakland University.

Nearly 1,000 people visited the center last year for free consultations with the center staff and to use the computer-assisted career guidance programs.

The computer programs, "Discover" and "Discover for Adults," aid adults in learning how their interests, abilities, work values and experiences are related to possible occupations or educational and training opportunities.

Other resources including the Michigan Occupational Information System are available in the center.

THE ADULT Career Counseling Center is directed by Dr. Howard Spite of the School of Human and Educational Services. The center is operated in conjunction with the master's degree program in counseling.

Four graduate students serve as center coordinators as they help adults with computer programs, use of career information and with referrals to other agencies or individuals. More in-depth counseling is available from advanced master's degree students in the Practicum Counseling Center.

These services by practicum counselors will be intensified this year, according to Dr. L. DiAnne Borders, who directed the center for the past year while Spite was on sabbatical leave.

Individuals seeking a free personal assessment should call the center at 370-3092.

SPLITE AND Borders say the center tends to get two kinds of clients.

One kind is those who have just lost a job and need help as soon as possible in deriving new career directions.

The other kind is the person returning to the work force — most of them women. They have more time to

explore options and learn more about self interests.

A REAL HIGHLIGHT of the past year, they said, has been the growing number of referrals to the center from other agencies. They see in this trend a growing professional recognition of the center and the quality of its service.

Deborah Weathers, a coordinator, sees the use of the center as an excellent beginning resource for career exploration and planning.

The center operates six days a week with flexible schedules matched wherever possible to client needs. Written assessments are provided and referrals are made to job placement or other career counseling and training programs.

Tamaracks lose needles in fall

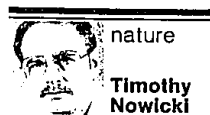
JUST A stone's throw from the nature center at Kensington Metro Park is a distinctive group of trees. They are distinctive because tamarack trees lose their needles, or leaves, each fall, just like the broad leaved trees.

All other conifer trees found in Michigan retain their needles year round.

Tamarack trees grow in wet swampy areas and can often be seen ringing a lake with their golden leaves in fall. Several lakes and bogs between Detroit and Jackson along I-94 display the golden glory of tamarack in fall.

Most trees today may appear dead without their leaves, but the carpet of yellow needles below reveals its dormancy and is only temporary.

BEFORE THE needles fall to the ground, they are clustered together in groups of 10-20.



nature
Timothy Nowicki

to grow in Michigan nearly 14,000 years ago.

Today, tamarack trees grow farther north than any other tree. Some plants grow on the muskeg of the far north by the light of the midnight sun.

EARLY SETTLERS in North America became familiar with the tamarack tree after they watched Indians sew their birch bark canoes together with the narrow rootlets produced by the tree.

Trees growing near beaver ponds produced particularly supple roots that were easily managed when sewing because of their high water content.

Railroad ties and telephone poles were made from tamarack trees be-

cause of their resistance to rot. An extract from the tree was used by settlers to heal wounds.

And turpentine from the European larch is used in producing a yellow resin used in making lithographs.

NOT LONG ago an insect known as the larch sawfly decimated the population of tamarack in Michigan and throughout its range.

Fortunately for us, unlike the American chestnut, the trees we see today represent new growth after the plague of the sawfly.

Take note of where tamaracks grow and watch them throughout the year. When spring arrives, the new needles produce a delicate blue green that is as interesting as the golden glow of autumn.

OU remodeling price up \$25,000

Remodeling of the Dodge Farmhouse has been assured with \$25,000 in supplemental funding approved Nov. 12 by the Oakland University Board of Trustees.

The facility is being converted into office space and should be ready for occupancy by January 1987.

Total cost of the project is \$340,000 with \$315,000 of that figure coming from state appropriations.

The extra \$25,000 to be paid by the university is necessary because of the deterioration not discovered when

the original project estimates were submitted.

Plans call for units of alumni, external affairs and the OU Foundation to be housed in the remodeled structure.

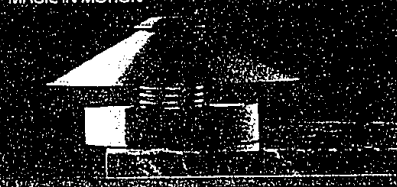
The farmhouse has been standing unused while a suitable use for the building and funds for conversion were identified. The state then approved funding for its remodeling into an office facility. The original project budget was approved by the board in June 1985.



ARKITEKTURA

20TH CENTURY FURNITURE, LIGHTING AND ACCESSORIES

MAGIC IN MOTION



a sculptural table lamp perfect for the bedside table or anywhere in need of a touch of magic. Simply wave your hand above the lamp, it glides up and turns on; a second wave sinks it down and turns it off.

SENSU I \$199.00



100 NORTH WOODWARD PARKWAY, SECOND FLOOR, JUMBO, DETROIT, MI 48201
MONDAY-SATURDAY 10A-6P, SUNDAY 12P-4P

We feature GM cars like this Buick Century



You Deserve National Attention® For Thanksgiving

\$26.95 PER DAY WEEKENDS

100 miles per day included. Additional mileage 20¢ per mile.

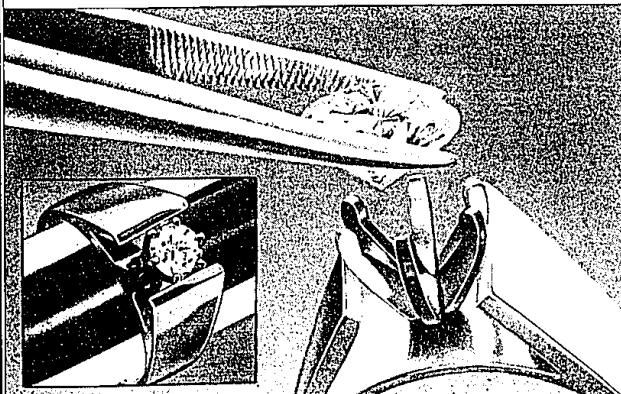
Non-discountable rate applies to Buick Century or similar size car and is subject to change without notice. Rates slightly higher for drivers under 25. Specific cars subject to availability. Certain daily minimums apply. Rate available from noon Wednesday, Nov. 26 to Monday, Dec. 1. Rates may vary by location. You pay for gas used and return car to rental location. Call for details.

National Car Rental®

Available at:
358-2350
839-5555
941-5030
258-9644

26695 Telegraph (Southfield)
Detroit City Airport
Metropolitan Airport
Hunter & Oak Amoco
905 N. Hunter (Birmingham)

JEWELRY RESTYLING EVENT



WHILE YOU WAIT

See your diamonds and precious stones transformed into a new and exciting piece of jewelry right before your eyes. Our experts will reset them while you wait. Choose from a variety of styles ranging from the classic to the contemporary in 14k yellow or white gold. We offer designs for rings, earrings, bridal sets and men's rings. An appraiser will be available for insurance and estate evaluation. Please call for an appointment.

EASTLAND • November 20
FAIRLANE • November 21
SOMERSET • November 22

CHARLES W. WARREN
JEWELRY SINCE 1962

WHEELING HALL, 1111 EAST 1400
KANSAS CITY, MISSOURI 64108
For more information call or write to: Charles W. Warren, Jeweler and Designer

In Dearborn WE ARE MICHIGAN



ELIAS BAUMGARTEN, PH.D.
Professor of Philosophy
and Medical Ethics
Adviser and Consultant

"The best part of teaching at UM-D is having the opportunity to get to know your students both inside and outside the classroom. I appreciate the diversity in age and ethnic background of our students. Most of all, I appreciate their love of learning."



RANA KHALIL
UM-D Sophomore
Working towards a degree
in International Business

"What I discovered at UM-D is that professors don't just teach the material in a book—they give you a whole new way of looking at things. You don't just earn a degree. You gain a new vision."

IT TAKES MORE THAN MODERN COMPUTERS AND library books to make a great university. At UM-D, we know that talented, motivated students are just as important as a first-class faculty. It is the synergism that occurs in the classroom every day between a great faculty and a great student body that is the true indication of a quality education.



The University of Michigan-Dearborn
Office of Admissions
Dearborn, Michigan 48128-1491
(313) 593-5100

*The University of Michigan-Dearborn is an affirmative action non-discriminatory institution.