

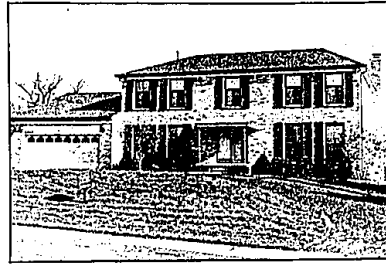
OUR FIRM IS A MEMBER OF THE BIRMINGHAM/BLOOMFIELD BOARD OF REALTORS MULTI-LIST SERVICE • THE METRO MULTI-LIST SERVICE • THE SOUTH OAKLAND COUNTY BOARD OF REALTORS MULTI-LIST SERVICE • THE ROCHESTER BOARD OF REALTORS MULTI-LIST SERVICE • OUR FIRM IS A MEMBER OF THE BIRMINGHAM/BLOOMFIELD BOARD OF REALTORS MULTI-LIST SERVICE • THE SOUTH OAKLAND COUNTY BOARD OF REALTORS MULTI-LIST SERVICE • THE ROCHESTER BOARD OF REALTORS MULTI-LIST SERVICE

**BEVERLY HILLS QUAD**

This lovely home features much updating including a new kitchen with a multi-level deck overlooking a beautiful treed yard. Located on a private cul-de-sac, this home offers 4 bedrooms, 3 baths, family room and glassed-in porch. Newly listed at \$185,000. SUT-88611

**OPEN SUNDAY 2-4****FINE CUSTOM RANCH**

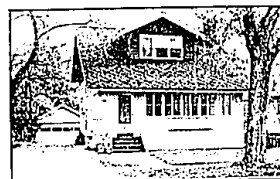
Featuring master suite with bath, cathedral ceiling family room with fireplace, library, 2 1/2 car garage with extra storage, basement, professionally landscaped yard and Bloomfield Schools. \$174,000. 1333 Lake Crescent Dr. S. of Lone Pine and W. of Telegraph.

**WARMTH ABOUND**

This spacious traditional 4 bedroom Colonial in a lovely smaller West Bloomfield sub. Driftstone natural fireplace, beamed stucco ceiling enrich the open family room, Italian ceramic tile in foyer and country kitchen. Library, Florida room and deck. \$239,500. INE-88578

**POPULAR PEMBROKE!**

Lovely ranch with 3 bedrooms, 1 bath, newer kitchen, fireplace and all on a gorgeous treed lot. Birmingham Schools! Newly listed at only \$54,900. PEE-88751

**IN-TOWN POTENTIAL!**

This 1 1/2-story Birmingham home is now on the market offering 3 bedrooms, 1 1/2 baths, cove ceilings, hardwood floors, 2 car garage and loads of potential! \$96,500. PUY



RALPH MANUEL

ASSOCIATES • REALTORS

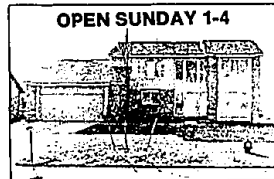
851-690032961 Middlebelt
Farmington Hills**647-7100**1821 W. Maple
Birmingham**Relocation 1-800 R-MANUEL**

- MEMBER OF EMPLOYEE RELOCATION COUNCIL
- MEMBER OF TRANSLO RELOCATION SERVICE

IF YOU ARE MOVING ACROSS THE CITY OR ACROSS THE COUNTRY, OUR RELOCATION DEPARTMENT CAN MAKE YOUR MOVE SMOOTHER.



THINKING OF SELLING YOUR HOME? NOW IS THE RIGHT TIME TO CALL RALPH MANUEL ASSOCIATES FOR A FULL TIME EXPERIENCED SALESPERSON TO GIVE YOU A COMPREHENSIVE MARKET OPINION OF THE VALUE OF YOUR HOME!

**OPEN SUNDAY 1-4****NEW CONTEMPORARY COLONIAL**

Family room with fireplace, sloped ceiling, cathedral ceiling in master suite, kitchen with island and cooktop. \$179,800. 6322 Timberwood, N. of Maple, E. of Drake.

**BLOOMFIELD HILLS**

Wooded lot overlooking a meandering stream. Charming Robertson built 4 bedroom walk-out ranch offers 2nd kitchen and guest suite on lower level. Newly listed at \$129,000. ASR-88507

**ROCHESTER HILLS CONDO**

Located in Kings Cove Condos. Sharp, clean and ready to occupy offering 2 bedrooms, 1 1/2 baths, kitchen with all appliances, basement and 1 1/2 car garage. \$81,800. CRT-88652

**LAKE PRIVILEGES**

West Bloomfield Schools are offered with this Quad-level home surrounded by large trees. Decorated in neutrals with 3 bedrooms, living, dining and family rooms. \$78,900. WOV-88580

**RANCH CONDO**

Now available in Beverly Hills. Gracious 2 bedroom upper ranch unit features T.V. security, 2 car heated underground parking, club room for guests all in an adult complex. \$119,500. THN-88612

**CONTEMPORARY RANCH**

Warmth abounds this open floor plan with 3 bedrooms, 2 1/2 baths, sauna, skylights, and Florida room. Finished basement and 3 car garage plus 1.4 wooded acres. \$143,900. PEK-86738

**BIRMINGHAM RANCH**

This beautifully updated home features 3 bedrooms, fireplace, newer furnace, attached 2 car garage and a full basement on a large in-town treed lot! \$129,000. YOE-88438

**MINT CONDITION**

Brick ranch with circle drive and attached garage. Three bedrooms, 2 baths, bright family room features fireplace with raised hearth and doorwall to large patio. \$69,900. PEA-88460

**"PROFESSIONAL LANDSCAPING"**

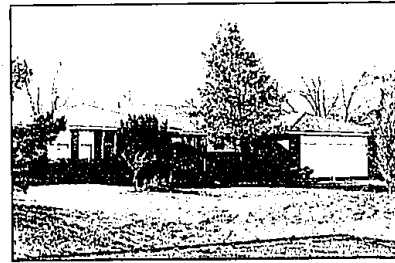
Enhances the curb appeal of this NOVI Colonial! Sparkling clean with alarm system, central air, 2 1/2 car side entrance garage and close to Novi Schools. \$124,900. JAN-87424

**ROCHESTER TOWNHOUSE**

"Hidden Hills Condo" offering a clean decor. End unit offers 2 bedrooms, 1 1/2 baths, living and dining room, kitchen with appliances, fireplace, basement and garage. \$81,100. WIW-84998

**CHAMPAGNE TASTE?**

Stunning custom contemporary featuring 2-story foyer, dramatic graceful wood lucite stairway, exciting Great Room, private library and master bedroom retreat with sunken Roman tub. Entertainment center, 2 wet bars, deck, and side entrance drive. \$189,700. ANE-88577

**IMMACULATE ONE OWNER HOME**

Located in popular Deerfield Village. Hard to find ranch with basement and 2 1/2 baths. Quality built with hardwood floors, dark room, beautiful landscaping including many fruit trees. Home shows pride of ownership! Newly listed at \$139,990. POT

**OPEN SUNDAY 1-4****BEAUTIFUL CONTEMPORARY COLONIAL**

In Hunters Pointe Sub, island kitchen with built-in cooktop and microwave oven. Cathedral ceiling in master suite with dressing room and private bath. Ceramic foyer, sprinklers. \$184,900. 29853 Fox Club. N. of 13 Mile, W. of Drake.

OUR FIRM IS A MEMBER OF THE BIRMINGHAM/BLOOMFIELD BOARD OF REALTORS MULTI-LIST SERVICE • THE METRO MULTI-LIST SERVICE • THE SOUTH OAKLAND COUNTY BOARD OF REALTORS MULTI-LIST SERVICE • THE ROCHESTER BOARD OF REALTORS MULTI-LIST SERVICE • OUR FIRM IS A MEMBER OF THE BIRMINGHAM/BLOOMFIELD BOARD OF REALTORS MULTI-LIST SERVICE • THE SOUTH OAKLAND COUNTY BOARD OF REALTORS MULTI-LIST SERVICE • THE ROCHESTER BOARD OF REALTORS MULTI-LIST SERVICE

OUR FIRM IS A MEMBER OF THE BIRMINGHAM/BLOOMFIELD BOARD OF REALTORS MULTI-LIST SERVICE • THE METRO MULTI-LIST SERVICE • THE SOUTH OAKLAND COUNTY BOARD OF REALTORS MULTI-LIST SERVICE • THE ROCHESTER BOARD OF REALTORS MULTI-LIST SERVICE • OUR FIRM IS A MEMBER OF THE BIRMINGHAM/BLOOMFIELD BOARD OF REALTORS MULTI-LIST SERVICE • THE SOUTH OAKLAND COUNTY BOARD OF REALTORS MULTI-LIST SERVICE • THE ROCHESTER BOARD OF REALTORS MULTI-LIST SERVICE