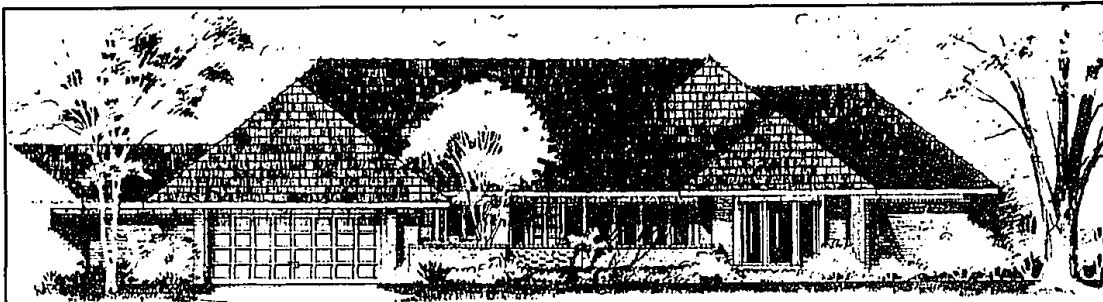




800 S. WORTH STREET
BIRMINGHAM, MICHIGAN 48011

646-1234



HOWARD T. KEATING AND ASSOCIATES PRESENT...

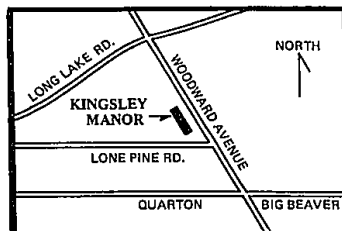
Kingsley Manor

LUXURIOUS CLUSTER HOMES IN THE CITY OF BLOOMFIELD HILLS



THE ULTIMATE LIFESTYLE!!!

Kingsley Manor is located in the distinguished community of the City of Bloomfield Hills. You will marvel at this charming and delightful tree-filled area of gently rolling countryside. All cluster homes are professionally landscaped. At Kingsley Manor enjoy the best of two worlds. It is an exclusive and completely quiet and private residence yet has all the conveniences of strategically located shopping in Birmingham or Somerset. Nearby is entertainment and some of the finest dining in America. Visit and see our luxurious baths and gourmet kitchens. Everything is on one floor. The Story and a Half is ideal for guests and visiting children. Come see our new home...and your new lifestyle!



LOCATION! LOCATION! LOCATION!

The City of Bloomfield Hills is the site of KINGSLEY MANOR CLUSTER HOMES. The first six units are on the west side of Woodward Avenue, between Lone Pine and Long Lake Roads, and they are open everyday except Thursday from 1-5 P.M. An additional ten units will be located on 4 acres directly to the south.

Howard T. Keating Associates, Inc., in partnership with Colonial Central Holding Company serve as the developer and sales agent.

Howard T. Keating of Howard T. Keating Associates, Inc., said, "We are appealing to people whom no longer need four or five bedrooms but want to live in the City of Bloomfield Hills, people who want spaciousness in the three primary living spaces, the kitchen, the master bedroom, and the main living area and people who want the master bedroom suite on the first floor."

Two styles of homes are available. The ranch from \$299,000 is approx. 2,700 sq. ft. with two bedrooms, den,

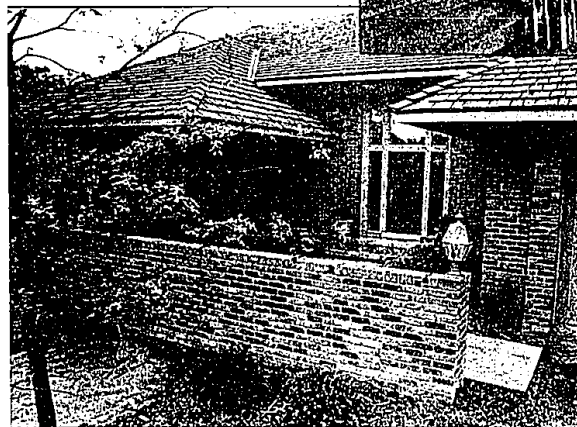
large gathering room, dining room, kitchen, nook, and a butlers pantry.

The story and a half from \$329,000 is approx. 3,000 sq. ft. with a first floor master bedroom, two additional bedrooms upstairs, den, gathering room, wet bar, dining room, kitchen, and nook.

All units have 2 full baths plus powder room, fireplaces of either brick or marble, first floor laundries, alarm system, wood sectional garage doors with openers, oversized whirlpool bathtubs in master bath. Three of the units have lower levels with an additional fireplace and furnace, doorwall, and high ceilings.

All of the exteriors are of reclaimed brick, with cedar shake roofs, and each unit has its own front brick courtyard. The setting is private, quiet yet close to shopping and Birmingham.

This intimate, exclusive development has it all, quality, location, convenience and a luxurious lifestyle.



The charm of the traditional exterior style carries over to the interior in the form of gracious curved stairways, large pleasant spaces and lovely views of the natural surroundings.