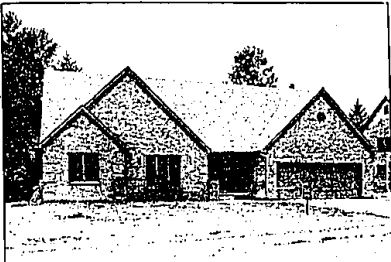


OUR FIRM IS A MEMBER OF THE BIRMINGHAM/BLOOMFIELD BOARD OF REALTORS MULTI-LIST SERVICE • THE METRO MULTI-LIST SERVICE • THE SOUTH OAKLAND COUNTY BOARD OF REALTORS MULTI-LIST SERVICE • THE ROCHESTER BOARD OF REALTORS MULTI-LIST SERVICE • OUR FIRM IS A MEMBER OF THE BIRMINGHAM/BLOOMFIELD BOARD OF REALTORS MULTI-LIST SERVICE • THE METRO MULTI-LIST SERVICE • THE SOUTH OAKLAND COUNTY BOARD OF REALTORS MULTI-LIST SERVICE



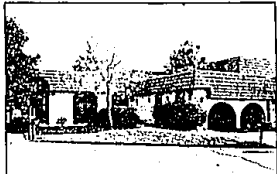
LUXURIOUS BEVERLY HILLS CONDO
Park-like atmosphere compliments this traditional home that has popular advantages of Condo ownership. Main floor master suite plus 2 additional bedrooms, spacious den and Great Room with fireplace. \$269,000. DOR-87101



COUNTRY SETTING CLOSE TO BIRMINGHAM
Bloomfield Hills ranch sits on almost 4 acres and offers 4 bedrooms, family room, 2 fireplaces and an updated kitchen and bath. Special features include sauna, zoned heating, alarm system and horses allowed! \$298,600. BRE-82778



NEWLY DECORATED - ASSUMABLE MORTGAGE
Quality built, gracious with solid features. Huge gourmet kitchen with center island, master suite with dressing area and walk-in closet. Oak floors, brick walk-in yard and Franklin location. \$329,000. FRN-84216



WOODLANDS ON GILBERT LAKE
Stunning contemporary Condo features a Great Room with fireplace and bar, lavish master suite. White Island kitchen has oak parquet floor. \$219,000. WOS-87521



OPEN SUNDAY 2-5
OLDE FRANKLIN TOWNE!
Well cared for Colonial offering a large kitchen and breakfast room, 1st floor laundry, 4 bedrooms, 2 1/2 baths and 3 car side entrance garage. \$149,500. 28769 Rockledge, S. of 14 Mile and E. of Middlebelt.



RALPH MANUEL

ASSOCIATES • REALTORS

851-6900 647-7100 656-8900

32961 Middlebelt 1821 W. Maple 1460 Waiton Blvd.

Farmington Hills Birmingham Rochester Hills

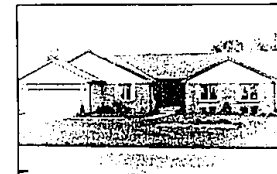
Relocation 1-800 R-MANUEL

- MEMBER OF EMPLOYEE RELOCATION COUNCIL •
- MEMBER OF TRANSLO RELOCATION SERVICE •

IF YOU ARE MOVING ACROSS THE CITY OR ACROSS THE COUNTRY, OUR RELOCATION DEPARTMENT CAN MAKE YOUR MOVE SMOOTHER.



BLOOMFIELD HILLS RANCH
Featuring 3 bay windows, 2 fireplaces, cathedral ceiling, family room with indirect lighting, hardwood floors in bedrooms and master suite with bath and dressing room. \$199,800. ECO-87591



IMMACULATE RANCH
Neutrally decorated with plush carpeting, ceramic foyer, crown moldings, oak cabinets, custom window treatments, Great Room with recessed lighting and wet bar. French doors to 60 ft. deck. \$182,000. FOX-86931



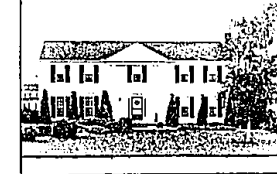
ROCHESTER HILLS CONDO
Sharp, clean and ready to occupy! This "Kings Cove Condo" offers 3 bedrooms, 2 1/2 baths, basement, garage, central air and more! Neutral decor! Newly listed at \$91,800. KIS-88653



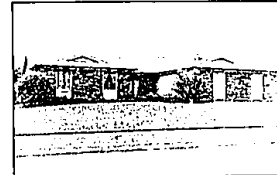
FAMILY NEIGHBORHOOD!
Fine 3 bedroom Colonial offers spacious kitchen leading to fireplace family room and beautiful quarry tile entry welcomes you into this charming home. Reduced to \$61,900. MAL-67213



WELL BUILT RANCH
Situated on a large treed lot with nice size rooms. Full basement, doorways to backyard, central air, 4th bedroom finished a library, corner lot and convenient to freeways. \$95,000. SOH-87368



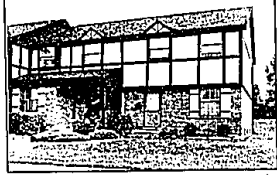
FARMINGTON HILLS
Inviting home offering a large family room with fireplace, formal dining room, 4 bedrooms, 2 1/2 baths, master suite with dressing room and walk-in closet. \$139,900. GRD-87094



CHELSEA VILLAGE!
Spacious newer ranch with sprinkler system, skylight in kitchen, family room with fireplace, mantel and wet bar. Three bedrooms, 2 1/2 baths and 1st floor laundry room. Offered at \$159,900. CLT-84060



SHARP BRICK RANCH
With aluminum trim for easy maintenance. Large living room, brick fireplace, dining room has doorwall to patio, 3 bedrooms, full basement, 2 car garage and Southfield location. \$56,800. COL-87691



NEAT SOUTHFIELD CONDO
For the active person wanting convenience and low maintenance - this is it! Central air, 2 bedrooms, 2 1/2 baths, full basement AND a fireplace. Complex offers pool, tennis and clubhouse. \$62,500. RAH-86217



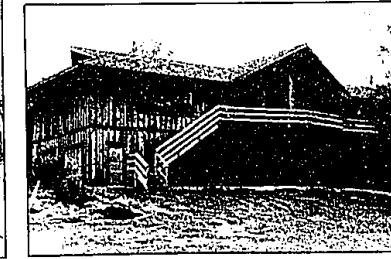
WALNUT LAKE PRIVILEGES
Dutch Colonial offers a 1st floor bedroom plus 4 upstairs bedrooms. Beautiful hardwood floors, paneled library, corner lot and Birmingham Schools! Land Contract terms available! \$134,900. HOE-84674



GAYLORD AREA
Unique opportunity for owning a 5 bedroom log cabin with 300 ft. on Lake Horicon, while dividends are being earned in your behalf. Enjoy the 5000 acres of land which includes 2 lakes and 2 tennis courts. \$319,800. LAE-84246



WING LAKE FRONTAGE!
Approximately 135 feet on the lagoon. This all brick ranch offers lovely family room and patio to enjoy the setting and serenity of this prime location. Sall, fish and swim in a peaceful atmosphere. \$295,000. DAA-84175



LAKEFRONT IN METAMORA!
Vacation at home in this custom contemporary in the horse country of Metamora. Almost 800 ft. of lake frontage on a secluded 7 acres. Indoor pool, vast window expanses and spectacular decor. \$280,000. WAD-84245

OUR FIRM IS A MEMBER OF THE BIRMINGHAM/BLOOMFIELD BOARD OF REALTORS MULTI-LIST SERVICE • THE METRO MULTI-LIST SERVICE • THE SOUTH OAKLAND COUNTY BOARD OF REALTORS MULTI-LIST SERVICE • THE ROCHESTER BOARD OF REALTORS MULTI-LIST SERVICE • OUR FIRM IS A MEMBER OF THE BIRMINGHAM/BLOOMFIELD BOARD OF REALTORS MULTI-LIST SERVICE • THE METRO MULTI-LIST SERVICE • THE SOUTH OAKLAND COUNTY BOARD OF REALTORS MULTI-LIST SERVICE