

exhibitions

• TOWN CENTER GALLERY

"Southwestern Expressions," the January show, includes etchings by Jean Richardson, slump glass sculpture by Larry Felder and ceramic constructions by Patricia Fahle. Works by gallery regulars also are on display — Brisson, Ceri, Ray Tey, Colnagard, Papari, Tamayo and Tobi. Hours are noon to 5 p.m. Monday, 10 a.m. to 5 p.m. Tuesday-Friday and 11 a.m. to 3 p.m. Saturday, 200 Town Center near the Atrium, Southfield.

• FARMINGTON HILLS BRANCH LIBRARY

One-woman exhibit of art by Evelyn Henry will be on display in the Quiet Room through January. The library is at 32737 W. 12 Mile, east of Farmington Road, Farmington Hills.

• PIERCE STREET GALLERY

"Photocraft," a show of photography used in pillows, jeans, quilts, stationery, sculpture and boxes continues through Jan. 24. Hours are 11 a.m. to 5 p.m. Wednesdays-Saturdays.

• D&J BITTKER GALLERY LTD.

"Japanese Erotica: The Genpei Series," silkscreen prints by Hideo Takeda, are on display through February, 535 N. Woodward, Birmingham.

• IS INC.

"More Than Real" is the title of an exhibit of paintings by Carl Angevine which continues through Jan. 7, 13 S. Saginaw, Pontiac.

• HENRY FORD COMMUNITY COLLEGE

"American Art Posters: 1960-1980" is a selection of original posters from galleries and museums. Continues through Feb. 6, 10 a.m. to 4 p.m. Monday-Friday, 5101 Evergreen, Dearborn.

• OAKLAND COUNTY GALLERY

Works by Michigan calligraphers are on display through the month. They are members of the sponsoring Michigan Association of Calligraphers and their work has been widely displayed. Hours are 9:30 a.m. to 5 p.m. Monday-Friday, Executive Office Building, 1200 N. Telegraph, Pontiac.

• GALLERY 22

"Flowers From My Garden," new watercolors by Yuko Moro, will continue through December. Moro, formerly a local resident, now lives in California. She's a graduate of Center for Creative Studies. Her flower paintings are exceptional. In their color, design and eye appeal. Hours are 9:30 a.m. to 6 p.m. Monday-Friday, until 9 p.m. Thursday and 5 p.m. Saturday, 22 E. Long Lake, Bloomfield Hills.

• ROBERT L. KIDD GALLERY

"Major Concepts: Clay" is a show of ceramic works by 21 nationally recognized artists in that medium. Continues through Jan. 24. Hours are 10:30 a.m. to 5:30 p.m. Tuesday-Saturday, 107 Townsend, Birmingham.

• SCHWEYER-GALDO GALLERIES

"Four Mexican Masters" has works by Armando Amaya, Gustavo Montoya, Rufino Tamayo and Francisco Zuniga, all of whom have works in major museums around the world. There are signed, numbered lithos by Montoya, Tamayo and Zuniga and five sculptures by Amaya. Continues through Jan. 29. Closed Dec. 24 to Jan. 2. Hours are 11 a.m. to 4 p.m., 29 W. Lawrence, Pontiac.

• CADE GALLERY

Small paintings, sculpture, drawings, ceramics, glass, jewelry, textiles and handmade paper by 29 artists are on display through Jan. 7, 214 W. Sixth, Royal Oak.

• THE COMMUNITY HOUSE

Paintings by Sonia Molnar of Troy

are on display through December. All works are for sale. The work is displayed throughout the building and may be seen during regular hours, 350 S. Bates, Birmingham.

• DETROIT INSTITUTE OF ARTS

"Life: The Second Decade" is an exhibit of black and white prints by 74 photographers depicting major world events and people from 1946 to 1955. Continues through Feb. 5. DeSalle Gallery of Photography, 9:30 a.m. to 5:30 p.m. Tuesday-Sunday. Closed Mondays and holidays, 5200 Woodward, Detroit.

• DETROIT GALLERY OF CONTEMPORARY CRAFTS

Eleventh holiday show includes works in clay, glass, wood as well as wearables and jewelry. Also featured are dolls for collectors by Akira Blount, Joyce Pardington, Tracey Gallup and Patricia Granzil. Hours are 11 a.m. to 5 p.m. Monday-Saturday, until 7 p.m. Dec. 18-23, 301 Fisher Building, Detroit.

• RUBINER GALLERY

Recent paintings by Hal Larsen are on display through the month. Larsen, formerly from Michigan, now lives and works in Santa Fe, N.M. Hours are 10 a.m. to 5:30 p.m. Tuesday-Friday, until 5 p.m. Saturday, 7001 Orchard Lake, West Bloomfield.

• NAWARA GALLERY

Premiere exhibit has paintings, sculpture and prints by top international as well as local artists from Claes Oldenburg to Sue Linburg. The gallery is at 1160 Welch Road, Walpole Lake, west of Haggerty, north of Maple. Hours are 1:30-5 p.m. Tuesday-Friday, 11 a.m. to 5 p.m. Saturday.

• PRESTON BURKE GALLERIES

Christmas show, glass, ceramics, paintings, prints and sculpture, continues through the month. Hours are 9 a.m. to 5 p.m. Monday-Friday, 240 E. Grand River, Detroit.

• SUSANNE HILBERY GALLERY

Paintings by Nancy Mitnick, landscapes and portraits, large and small, are on display through Jan. 6. Hours are 11 a.m. to 6 p.m. Tuesday-Saturday, 555 S. Woodward, Birmingham.

• BELIAN ART CENTER

Oriental rugs, ceramics from Jerusalem, paintings, drawings, sculpture and pottery and art glass by both international and local artists are on display through Jan. 17. Hours are 11 a.m. to 6 p.m. Monday-Saturday, 5980 Rochester Road, (corner of Square Lake), Troy.

• GRYPHON GALLERY

"Remembrance of Times Past," a holiday celebration in all media continues through Jan. 3. Hours are 11 a.m. to 6 p.m. Tuesday-Saturday, until 8 p.m. Thursday, 99 Kercheval, Grosse Pointe Farms.

• HABATAT GALLERIES

Rick Bernstein, masterful in incorporating humor into his cartoon-like wall reliefs of glass and mixed media on aluminum, will have works on display through Dec. 27. They are timely, fanciful and captivating, 28235 Southfield Road, Lathrup Village.

• BLOOMFIELD FINE ARTS

"The Winter Landscapes of Christmas," an exhibition of paintings by European and American artists, continues through Dec. 27. Open 10 a.m. to 8 p.m. daily, 280 N. Woodward, Birmingham.

• DETROIT ARTISTS MARKET

Holiday "supermarket" has lots of art for holiday giving. Special holiday hours are 11 a.m. to 5 p.m. Tuesday-Saturday and until 7 p.m. Thursday, 1452 Randolph, Detroit.

• TROY ART GALLERY

Holiday show features works by more than 20 artists who have made all kinds of whimsical and pleasant gifts. Hours are 11 a.m. to 5:30 p.m. Tuesday-Saturday, 755 W. Big Beaver, Suite 131.

• DONNA JACOBS GALLERY

Holiday show continues through December. Hours are 11 a.m. to 5:30 p.m. Tuesday-Saturday, 574 N. Woodward, Birmingham.

• SHELDON ROSS GALLERY

Recent paintings and drawings by non-objective artist Leo Mardirosoian of the Center for Creative Studies faculty are on display. Hours are 11 a.m. to 5 p.m. Tuesday-Saturday, 250 Martin, Birmingham.

• DONALD MORRIS GALLERY

Paintings by Alan Green are on display through December. His work is in major museums here and abroad. This is his first one-man show in this country in eight years. Full-color catalog available, 105 Townsend, Birmingham.

• DUKE GALLERY

"Austrian Glass and Pottery, 1890-1930," continues as a colorful show to mark this gallery's second anniversary, 185 N. Woodward, Birmingham.

• MUSKEGON MUSEUM OF ARTS

"Harold Linton: Paintings 1976-1986" is deserved recognition for this professor of architecture at Lawrence Institute of Technology. His large canvases explore color relationships in minute detail, but never lose the aesthetic qualities of the whole. Continues through Jan. 11. Linton will give a gallery talk at 2:30 p.m. Sunday.

• CRANBROOK ACADEMY OF ART MUSEUM

"Viewpoint '86," with works by Jennifer Bartlett, John Egner, Al Held, Philip Pearlstein, Judy Pfaff, Katherine Porter and Philip Woford, explores the theme of environment and space in contemporary painting. Catalog accompanies exhibit. Hours are 1-5 p.m. Tuesday-Sunday. Admission charge, 550 Lone Pine, Bloomfield Hills.

Vocal auditions set

Auditions for the Elizabeth Gardner Vocal Award will be held in Birmingham on Saturday, Feb. 21. Applicants for the \$500 prize must be junior, student or active members of the Michigan Federation of Music Clubs. The competition is open to men and women ages 17-23. Entrance fee is \$3. Student membership fee for the Michigan Federation of Music Clubs, \$4.50, is also required.

For advance entry forms, contact Charlotte McCray, 221 Jeffrey, Royal Oak 48073, 435-9645. Performers are expected to provide their own accompanists and have four selections prepared — an aria from opera or oratorio, early Italian, Romantic (French or German) and contemporary.

Margaret Snyder and Mary Pardee set up the award in memory of their mother, Elizabeth Gardner, who died in 1960, to help further the careers of young singers. Gardner was a singer who was active in music circles.

The winner will be presented at the spring convention of the Michigan Federation of Music Clubs and at a Birmingham Musicale concert.

Winter art classes start

The 10-week winter term at the Birmingham Bloomfield Art Association begins Jan. 12 and continues through March 21. Open registration started this month.

The offerings include more than 100 classes and workshops in a wide variety of disciplines. There are 20 classes geared to preschoolers through high school students, explor-

ing drawing, painting and pottery, plus cartoons and comic strips. More than 10 special sessions from 1-4 days in length are offered in the workshop schedule.

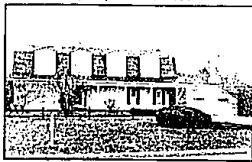
The BBAA is located at 1516 S. Cranbrook, Evergreen at 14 Mile, and is open to everyone. For further information and a free brochure, call 644-0866.



Merrill Lynch Realty



CONTEMPORARY bi-level decorated in gray and white features 3 bedrooms, 2 1/2 baths. Wood flooring in living room and dining rooms, kitchen, family room, and foyer. Skylites in master bedroom, living room and bathroom. \$189,900. 626-9100



DESIRABLE SUB in West Bloomfield is home to this 4 bedroom Colonial featuring landscaped and bricked walk ways, circular driveway, finished basement, sprinkling and alarm system and swim club. Close to schools and shopping. \$159,900 851-8100



PRIZED 2nd FLOOR CONDO with Southern exposure on Cass Lake. Extensive use of ceramic tile in kitchen, utility and baths, custom kitchen and dramatic mirrored wall surrounding fireplace make this residence ultimate. \$129,900. 851-8100



GREAT ALTERNATIVE to owning a home. Condo with gatehouse, clubhouse, tennis courts and pool 2 bedrooms and attached garage in popular Hunters Ridge complex. \$89,900. 851-8100



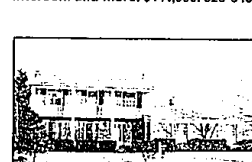
ALMOST 1/2 acre lot is beautifully wooded and provides an excellent setting for this beautiful contemporary tri-level. Special features include deck off master bedroom, breakfast area, and extra storage in garage. \$81,500. 626-9100



CUSTOM BUILT COLONIAL HOME in desirable Franklin Village. Boasting dramatic marble foyer, 4 bedrooms, earthenware carpet, country style kitchen and doorwall leading to a spacious Florida room. So much more. \$179,900. Call 626-9100



SPACIOUS COLONIAL in prime Northwest Farmington Hills is in move-in condition. Neutral decor, 4 bedrooms, energy saving glass doors, intercom and more. \$141,900. 626-9100



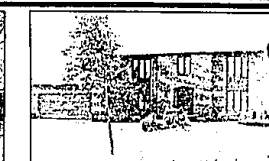
IMMACULATE COLONIAL backs to park like setting in West Bloomfield. Attractions include large entrance foyer, tasteful decor, maintenance free exterior, professional landscaping and hardwood floors throughout. \$139,900. 626-9100



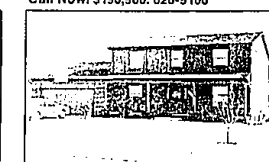
CHARMINGLY restored and enlarged 1904 Farmhouse. Great for entertaining. Features include 3 bedrooms, 2 garages and updated kitchen. A lovely oriented home with beautiful trees. CALL! \$122,500. 851-8100



CHARMING Farmington Hills unit with plush neutral carpet, large master bedroom windows and doorwall opening to patio, courtyard, tennis courts and pool. A real value! \$56,700. 851-8100



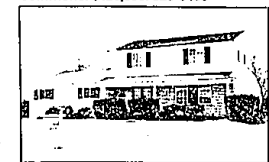
HOW SOON CAN YOU MOVE? Custom quality in this French 2 story home. Amenities include 4 bedrooms, recessed lighting, neutral carpeting, master bath with Roman tub, stall shower and fantastic island kitchen. Call Now! \$190,900. 626-9100



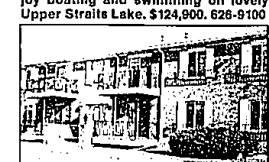
HANDSOME FARMINGTON HILLS Colonial. Tastefully decorated in neutral decor, this 4 bedroom, 2 1/2 bath home provides library, first floor laundry, natural fireplace and patio. All in prestigious Dunbar Oaks. \$146,900. 626-9100



SPACIOUS QUAD with open floor plan and contemporary flair! Neutral decor, 4 bedrooms, newer central air, vast family room with wet bar, and award winning West Bloomfield High & Middle School. Great subdivision with commons. \$129,900. 626-9100



BLOOMFIELD HILLS! Tastefully decorated in neutrals this 4 bedroom Colonial provides a fantastic view of treed lot, full basement, womanized deck, large rooms, and hardwood floors. Enjoy boating and swimming on lovely Upper Straits Lake. \$124,900. 626-9100



ONE STORY UPPER UNIT ranch of Farmington Hills boasts plush earthenware carpeting throughout, living room with doorwall to balcony, central air and 2 full baths. Beautiful grounds. \$58,900. 626-9100

RELO CENTER

FREE

The RELO CENTER — an exciting new place for Metropolitan Detroit! It's here that visitors can browse through colorful displays and gather literature, maps and brochures on the quality of life in greater Detroit. No appointment is necessary and there is NO CHARGE.

If you're moving to greater Detroit or simply moving locally from one area to another, don't make your move without visiting the RELO CENTER!

(313) 355-5113 Toll-Free Outside Michigan 1-800-352-0629
Hours: Mon-Fri 9:30-5:00, Saturday 10:00-1:00

RELO CENTER
American Center Building
2777 Franklin Road
Southfield, MI 48034

BIRMINGHAM/BLOOMFIELD	FARMINGTON HILLS	TROY	ROCHESTER	WEST BLOOMFIELD
1530 N. Woodward (at Long Lake Rd.) 646-6000 647-5100	35840 Northwestern at 13 Mile Rd. 626-9100	5017 Rochester Rd. at Long Lake Rd. 689-8900	1000 W. University (at Meadowbrook Plaza) 651-8850	4318 Orchard Lake Rd. at Lone Pine Rd. 851-8100