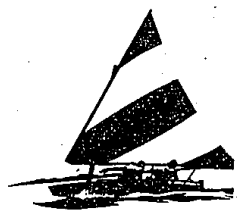




Presented by the
Observer & Eccentric
NEWSPAPERS



Vacation Planner

PLAN YOUR VACATION TODAY--ANTICIPATION IS PART OF THE FUN!

California Golden West Tour

8 DAYS — DEPARTS TUESDAY JANUARY 20, 1987 RETURNS TUESDAY JANUARY 27, 1987



\$439 COMPLETE PER PERSON
Based on Double Occupancy

- ☐ LOS ANGELES
- ☐ HOLLYWOOD
- ☐ UNIVERSAL STUDIOS
- ☐ CALICO GHOST TOWN
- ☐ LAS VEGAS
- ☐ PALM SPRINGS

"Your" Price Includes...
☐ Air Transportation on scheduled air lines with in-flight meals
☐ To-your-room baggage handling ☐ Hotel/airport transfers (in California) ☐ Hotel accommodations ☐ Sightseeing & special events ☐ Entrance fees ☐ Fully escorted

Florida Sunshine Tour

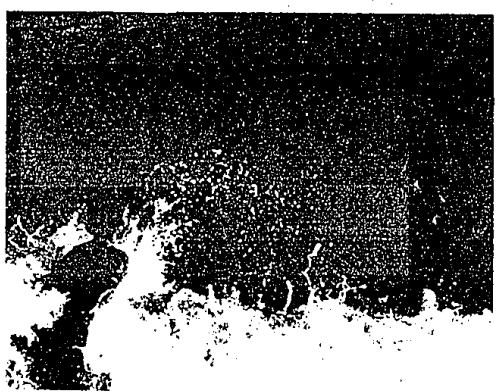
\$649 COMPLETE PER PERSON
Based on Double Occupancy

TENNESSEE - CAROLINAS - GEORGIA

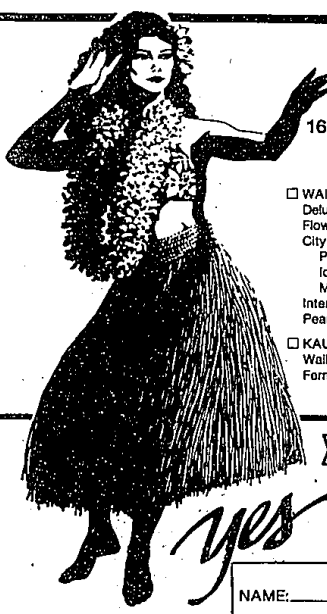
14 DAYS - DEPARTS SUNDAY, MARCH 8, 1987 - RETURNS SATURDAY, MARCH 21, 1987

- ☐ GEORGIA
 - Stone Mountain Park
 - Coastal Highway
- ☐ TENNESSEE
 - Great Smokey Mountains
 - Gatlinburg
- ☐ SOUTH CAROLINA
 - A Plantation
 - A Coastal Island
- ☐ FLORIDA
 - St. Augustine
 - Kennedy Space Center
 - Epcot
 - Miami Beach
 - Everglades Boat Ride

"Your" Price Includes...
☐ Round trip airfare to Atlanta ☐ Round trip motorcoach from Atlanta through the Southeast ☐ Hotel/Motel accommodations-14 days ☐ To-your-room baggage handling ☐ Sight seeing enroute ☐ Special events and entrance fees as listed ☐ Fully escorted



Due to FIRST CLASS SEATING, with extra leg room, our full sized motorcoach can accommodate only 32 passengers. Space is limited, reservations will be confirmed, with deposits on first-come basis.



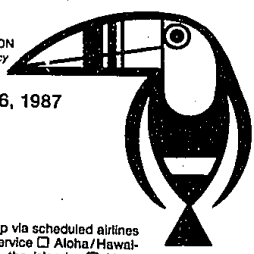
Hawaiian Tour

\$1484 COMPLETE PER PERSON
Based on Double Occupancy

16 DAYS-DEPARTS TUESDAY, APRIL 21, 1987 - RETURNS WEDNESDAY, MAY 6, 1987

- ☐ WAIKIKI
 - Deluxe Aloha Cocktail Party
 - Flower Lei Aloha Greeting
 - City Tour of Old and New Honolulu
 - Punch Bowl
 - Iolani Palace
 - Manoa Residential District
 - International Market Place
 - Pearl Harbor Cruise
- ☐ KONA & HILO
 - Black Sand Beach
 - Mauna Loa and Kilauea Volcanoes
 - Thurston's Lava Tube
 - Giant Fern Tree Forest
 - Famous Volcano House
 - Banyan Tree Drive
 - Hilo's Orchid Gardens
 - Rainbow Falls
 - Beach Party Luau
- ☐ MAUI
 - Mysterious Valley Excursion
 - Old Whaling Capital of Lahaina
 - Fabulous Kaanapali Resort
- ☐ KAUAI
 - Waimea River Boat Cruise
 - Farm Grotto

"Your" Price Includes...
☐ Air Transportation- Round trip via scheduled airlines coach class; with inflight meal service ☐ Aloha/Hawaiian Airlines-Jet flights between the islands ☐ Hotel accommodations-based on twin/double bedrooms in fine resort hotels; all rooms with a private bath ☐ To-your-room baggage handling ☐ Personal Transfer-Airport to hotel round trip throughout ☐ Tips for baggage handling are included



YOUR MAN TOURS 24824 MICHIGAN AVENUE
DEARBORN, MI 48124
(313) 278-4102

Please send me at no obligation a tour brochure explaining all the details and applications for the following tour:
☐ BEST IN THE WEST ☐ CARIBBEAN CRUISE
☐ FLORIDA SUNSHINE TOUR ☐ HAWAIIAN TOUR

NAME: _____
ADDRESS: _____
CITY: _____ STATE: _____ ZIP: _____
PHONE: _____

