

Industry	Actual		Forecast			
	1983	1984	1985	1986	1987	1988
Total Private	361,200	405,400	455,800	480,300	498,200	519,000
Manufacturing	84,400	100,500	112,100	112,200	111,200	112,400
Transportation Equipment	34,600	43,100	48,200	48,400	45,800	46,700
Other Manufacturing	49,800	57,400	63,900	63,800	64,200	65,700
Private Nonmanufacturing	276,800	304,900	343,700	368,100	387,000	406,600
Construction	12,000	13,800	17,800	19,800	20,300	21,800
Transportation & Utilities	14,700	16,000	16,900	17,500	18,100	18,900
Trade	119,900	125,900	136,900	147,100	154,300	161,100
Finance	27,200	29,100	29,100	30,600	31,700	32,900
Services	106,400	117,700	129,400	140,000	151,500	166,900
Agriculture & Mining	2,700	3,400	3,600	4,100	4,500	5,000

## Economic outlook

Oakland County can expect little growth in manufacturing in the two years ahead, according to the University of Michigan's Institute of Labor and Industrial Relations. Big job providers will be services, trade and finance. Government employment isn't covered in the U-M study. Oakland is one of three areas in the state for which U-M is doing local job forecasting; others are the Ann Arbor and Flint areas.

## Area business index edges up

Between October and November, the Detroit Area Business Activity Index gained one point, reaching 141, compared with 140 in October, according to Manufacturers Bank economist David L. Littman.

"This gain is especially encouraging in view of the post-automotive incentive financing programs, which were largely discontinued after September," Littman said.

"In fact, automobile sales and automobile production lost ground during both October and November.

However, a surge in local steel output more than offset these declines. Also, local employment has continued posting gains since September."

Year-to-date through November, the Business Activity Index is 0.2 percent ahead of 1985.

The index is compiled monthly from eight different measures of regional activity and is seasonally adjusted, corrected for inflation, and expressed on an index basis with a 1982 base of 100.

### 50th Anniversary Sale

## Smiley Brothers

"A TRUSTED NAME IN MUSIC"

Kimball Grand \$2995 new, made in USA  
Detroit 875-7100 Birmingham 847-1177  
5510 Woodward 1010 N. Hunter  
Daily 9-6, Closed Sun. Open Sun. 1-5

O&E Classifieds work! O&E Classifieds work!

# SAVE 40% TO 50%



We must make room for new product so now is the time for extraordinary savings on "floor sample" items from every category. Sale ends Saturday 1/10/87. All Sales are Final.

\*Items shown are for illustration only.

SAVE 40% TO 50%

## Classic Interiors

Fine Furniture...where quality costs you less

20292 Middlebelt Rd. (S. of 8 Mile Rd.) Livonia

Mon., Thurs., Fri. 11-5 P.M.  
Open Sunday 1-5

474-6900

### ANNUAL

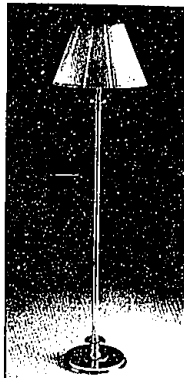
## January LAMP SALE

Savings From 20% To 50%  
On Our Everyday Low Prices!

These Stiffel Lamps  
Are Just Two Of The  
Excellent Values  
Available During  
Our Year-End Sale.



Was \$163.95  
NOW \$99.95



Was \$204.95  
NOW \$169.95

SHOP EARLY FOR THE BEST SELECTION!

## Michigan Chandelier Co.

... YOUR LIGHTING SPECIALISTS

BIRMINGHAM  
6580 Telegraph  
626-2548

ROCHESTER  
200 E. Second Street  
651-4302

SOUTHFIELD  
20855 Telegraph  
353-0510

## Country Squire Shop

Gentlemen's Fine Apparel  
75 W. Long Lake Road  
Bloomfield Hills

## WINTER CLEARANCE SALE

STARTS  
FRIDAY, JANUARY 2, 1987

Very Substantial Reductions on

CLOTHING BY:

- Walter Morton
- H. Freeman
- Christian Dior
- Ralph Lauren

SPORTSWEAR BY:

- Christian Dior
- Countess Mara
- Hathaway Shirts

Savings in most departments.  
Selections are limited, so shop early.

All winter  
OUTER JACKETS  
1/3 off

Special Group  
MEN'S SUITS  
1/3 off

Open daily 9 to 6 p.m.

# Great Savings Special

Earn high interest on these Savings Certificates

	ANNUAL PERCENTAGE RATE	EFFECTIVE ANNUAL YIELD
5-Year Certificate	7.5%	7.71%
3-Year Certificate	7%	7.18%
1-Year Certificate	6%	6.13%

Minimum deposit: \$500

Interest compounded quarterly. Substantial interest penalty for early withdrawal from certificate accounts.

You'll like the way we do banking.

Standard Federal Bank  
Savings/Financial Services



Standard Federal

IDEAL FOR IRAS!  
Why not take advantage of these  
excellent rates and open an IRA before  
the new tax law comes into effect  
January 1, 1987.