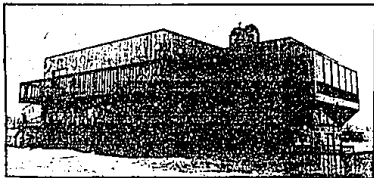




# Merrill Lynch Realty

## 22 Reasons to Buy...Many Open 2-5!



**OPEN SUN.** 6500 Brookshire. E. of Haggerty, S. side of Maple. **SPECTACULAR NEW** West Bloomfield Contemporary is simply marvelous. Atrium wall of glass, glass skylit foyer, 3 levels of wrap around decking and so much more. Constructed with only the best, you are sure to find this home irresistible. \$430,000. 628-9100



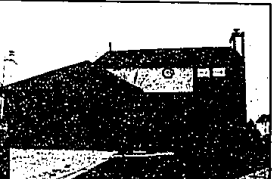
**OPEN SUN.** 3785 Indian Trail. N. of Long Lake, W. off Orchard Lake. **ENJOY** the beautiful sunsets from your deck or living room. Orchard Lakefront brick ranch with 3 bedrooms, rec room, remodeled bath with jacuzzi and the beach at your doorstep. \$239,000. 851-8100



**OPEN SUN.** 3462 Lone Pine. N. side of Lone Pine, E. of Orchard Lake. **ATTRACTIVE COLONIAL** in desired Covington. Features large foyer, 4 sizable bedrooms, gracious living and dining rooms, hardwood floors and expansive kitchen with breakfast nook. \$187,000. 851-8100



**OPEN SUN.** 977 N. Reading. N. of Long Lake, E. of Squirrel. **IMPECCABLE** sprawling ranch in Bloomfield. A 3 bedroom, 2 1/2 bath home offering Pella windows, screened porch, patio, new loaded glass entry, 2 fireplaces and many other custom amenities. \$144,900. 647-5100



**OPEN SUN.** 1633 Glen Meadow Ct. W. of Rochester, S. of Avon. **LOADED WITH SPECIAL FEATURES.** Three bedroom Rochester Hills Colonial offers deck, all kitchen appliances, basement, fireplace and super neutral decor for easy decorating. Great Price. \$101,900. 651-8850



**OPEN SUN.** 17531 Revere. E. of Southfield, S. of 13 Mile. **IDEAL HOME** for the active family. This spacious four bedroom, 2 1/2 bath colonial is just minutes from Birmingham. Formal dining room, family room, porch, and 2 car garage. \$94,500. 851-8100



**OPEN SUN.** 3467 Lone Pine. W. of Middlebelt, S. off Lone Pine. **UNIQUE** West Bloomfield Spanish 3 story set on gorgeous property with Bloomfield Lakefront. A 5 bedroom home with California driftstone fireplace in master bedroom and living room, open floor plan and outdoor delights with two tier decking. \$340,000. 851-8100



**OPEN SUN.** 485 Garner. N. of General Motors, W. of Garner. **CUSTOM HOME** on rolling ten acres with 4 stall barn. Enjoy a gorgeous view from every window of this 3 bedroom, 2 1/2 bath Tudor in Milford. Features include 2 fireplaces, rec room with walkout and 3 decks. \$299,000. 628-9100



**OPEN SUN.** 30098 Richmond Hill. N. of 13 Mile, W. of Middlebelt. **YOU JUST FOUND IT.** Great Farmington location for this 5 bedroom, 2 1/2 bath ranch. Formal dining room, breakfast nook, island kitchen, and exceptional landscaping. \$199,000. 628-9100



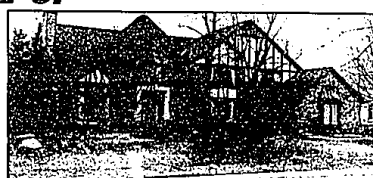
**OPEN SUN.** 3660 Valleyview Lane. S. of Lone Pine, W. of Middlebelt. **LOVELY DUTCH** Colonial with Bloomfield Hills schools. Move in condition with 4 bedrooms, deck to private yard, wet bar in kitchen, lots of storage and alarm systems. Simply gorgeous. \$181,900. 646-6000



**OPEN SUN.** 2931 Walbridge. N. off Auburn, E. of Livernois. **EXCITING NEW CONSTRUCTION** in prime Rochester Hills. This great room ranch affords comfortable living with cathedral ceilings, 3 bedrooms, 2 baths, jacuzzi and huge yard. \$104,900. 651-8850



**EXCEPTIONAL TROY COLONIAL.** Family sized home offers 4 bedrooms, 2 1/2 baths, great family room, library and super brick patio. All of the amenities - double storm, air cleaner, sprinkler system and more. \$166,900. 889-8900



**OPEN SAT. & SUN.** 12-5. 355 Sycamore Ct. N. off Hickory Grove, W. of Lahser. **BLOOMFIELD'S** prestigious Chestnut Run Sub. 4 bedroom Tudor is special inside & out. Enjoy the magnificent circular staircase, master suite with Italian marble bath, whirlpool tub, morning room and professional landscaping. \$598,000. 647-5100



**OPEN SAT. & SUN.** 29308 Briarwood Ct. S. of 14 Mile, W. of Drake. **NEW CONSTRUCTION** for this alluring Contemporary of Farmington Hills. Impressive great room, 4 bedrooms, free flowing floor plan, two wet bars and 2 fireplaces. Much more. \$325,000. 628-9100



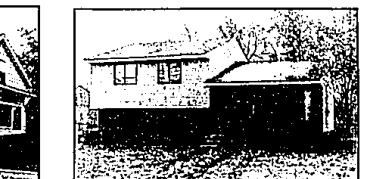
**OPEN SUN.** 5155 Letimer. N. of Diller, E. on Greer. **BEAUTIFULLY** cared for 1 1/2 story brick lakefront home. Features 3 bedrooms, formal living and dining rooms and family room. Enjoy the screened porch, 50 ft. womanized dock, and the many picnic areas around. Must See! \$194,500. 851-8100



**OPEN SUN.** 739 Greenwood. N. of Maple, W. of Woodward. **DOWNTOWN BIRMINGHAM** is a super location for this charming Dutch Colonial with 4 bedrooms. Presenting new or kitchen, master suite with vaulted ceilings and skylights, hardwood floors and more. \$185,900. 647-5100



**OPEN SAT.** 2232 North Fairview. N. of Tienken, W. of Livernois. **GREAT FAMILY** home in lovely Rochester Hills. Neutral carpeting, bay window in formal dining room and spacious master bedroom with dressing area. \$122,900. 651-8850



**OPEN SUN.** 128 Linhart. E. off Novi, S. of 13 Mile. **SUPERB SETTING** for this 4 bedroom Quad decorated in neutrals. Backing to woods this residence offers lovely deck, fenced yard and Lake Privileges. Popular Novi schools. \$87,500. 626-9100

**BIRMINGHAM/BLOOMFIELD**  
1520 N. Woodward  
(at Long Lake)  
646-6000 647-5100

**FARMINGTON HILLS**  
FRANKLIN  
31000 Northwestern Hwy.  
626-9100

**TROY**  
5017 Rochester Rd.  
(at Long Lake)  
689-8900

**ROCHESTER**  
1000 W. University  
(in Meadowbrook Plaza)  
651-8850

**WEST BLOOMFIELD**  
4316 Orchard Lake Rd.  
(at Lone Pine Rd.)  
851-8100

**NOVI/NORTHVILLE**  
37000 Grand River  
(E. of Halsted)  
478-5000

OPEN MONDAY-FRIDAY 9 a.m.-7 p.m. SATURDAY 9 a.m.-5 p.m. OPEN SUNDAYS

