



BRANDS: CARROLL, Murphy, and
Nancy Johnson's estate. It is a medium-duty
drum and a 2000-lb. top-hugging platform with
5100 in. displacement.



This soft, supple and wide popular shoe is actually the most durable shoe you'll see. \$50. Men. Women. Children. **STANLEY'S SHOE STORE.**



JERRY ZOLYNSKY/staff photographer
Kolly Harp's pastel silk print (above) wafts narrowly over the body. \$200. Nattie, Birmingham. At the left, Her cotton clintz floral garden gown is so romantic that it absolutely has to dance. Gown by Karen Alexander, \$132. Don Thomas Sporthaus, Bloomfield Plaza. His cult from Anton's.

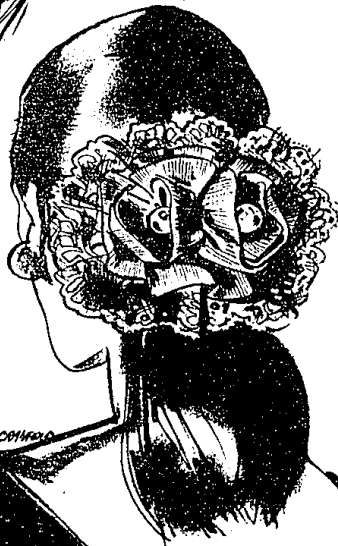
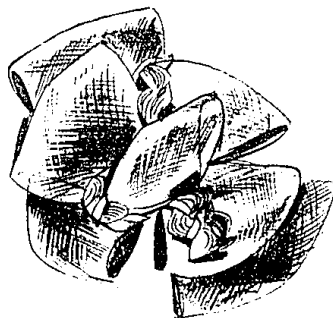
ROMANTIC

softness

AS A SOFTER, MORE romantic mood emerges for spring dressing, man-tailoring and hard edges are confined in the men's department from whence they came.

The woman's mood has turned to soft, feminine dressing in fabrics that float or cling a little in strategic places. And spring evenings encourage dressing up with endless possibilities for fantasy and romance.

BONWIT TELLER



Use your head!

**Flaunt today's solid
fashion hit**

The frivolous bow

Another smart move: find it in Bonwit Teller's exclusive collection. These on automatic barrettes. Top left, white or ecru taffeta with lace overlay, faux pearl center. From Impromptu for Commodore In acetate and rayon, 20.00. Top right, Horsehair cluster in luscious pales. This, one of a collection from David Inc., 22.00. Below, double grosgrain flower bow with faux pearls and lace. White or ecru rayon from Whittall & Shon, 35.00. Millinery, Main Level, Somerset Mall



THE ROCKING HORSE

725 S. Adams (Adams Sq. Mall)
Birmingham • 644-0270