

## Carpets

Continued from Page 6

rugs carry a premium, yet machine-made or power-loomed rugs are often identical in looks. You might get a better buy with the machine-made rug.

You can tell a great deal about a rug by examining it closely. Some tests for consumers to try, include brushing your hand over the face of the rug to see how much fiber comes out. All rugs will shed a bit, but if lots of fiber comes out, it means the rug is made of short staple wool — and longer wool strands are better.

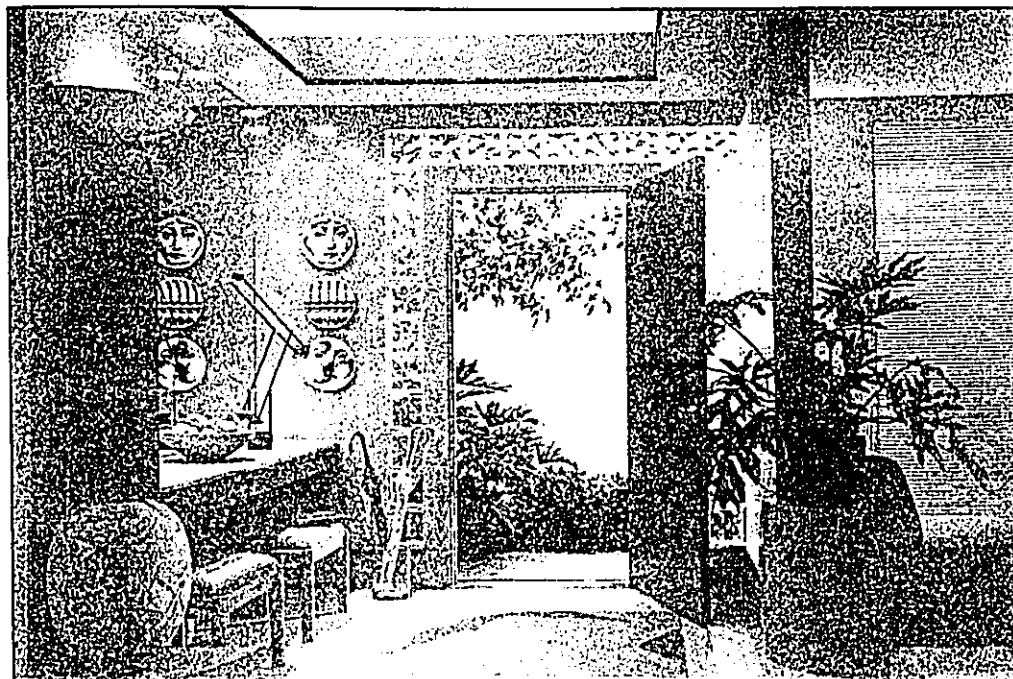
Turn the rug over and look at the back. The closer the knots (or bumps), the finer the rug and the longer it will last.

Another test is to look for the pattern on the back. Closely woven rugs will duplicate the front pattern rather clearly on the back, while the pattern will be far more distinct in more loosely woven orientals.

## Credits

This special Home and Garden section appearing today in all 12 Observer and Eccentric Newspapers was coordinated by Marie McGee, special sections editor. Advertising coordinators were Vel Ellis and Debbie Fosgard.

Any questions should be directed to McGee at 591-2300, Ext. 313.



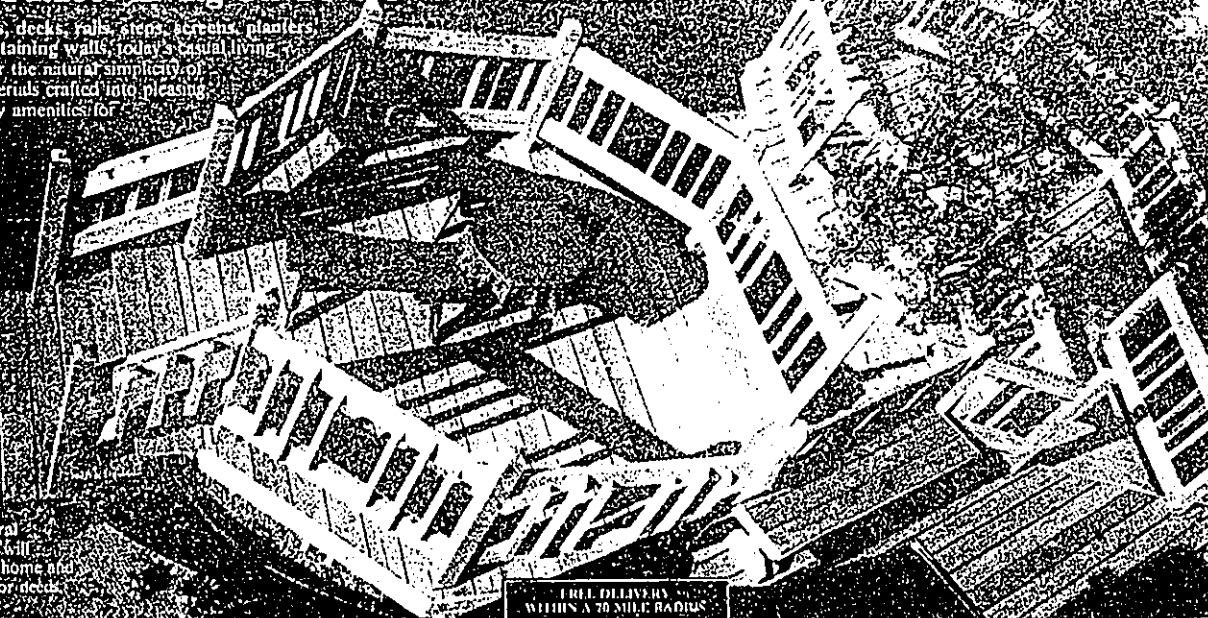
## Contemporary — and how!

This foyer got the contemporary treatment — and how. The front door is purple, the walls bright red, and the no-wax floor is gray. Glass blocks around the front door admit lots of light.

## Birdseye View of Decks on the Level...

### Enjoy Outdoor Living On Your Own Wood Deck

From fences, decks, rails, steps, benches, planters to siding, retaining walls, today's casual living styles call for the natural simplicity of familiar materials crafted into pleasing, easy-to-enjoy amenities for better living.



Whether stained, painted, bleached or left in its natural style, a new deck will complement your home and satisfy your outdoor needs.

FREE DELIVERY WITHIN A 20 MILE RADIUS

## H. A. SMITH Lumber & Supplies

28575 GRAND RIVER (near 8 Mile) 474-6610 or 535-8440

Available in Western Red Cedar or Treated Ponderosa Pine

40th Anniversary 1946-1986