

exhibitions

● **PIERCE STREET GALLERY**
Friday, May 15 — New work by Denny Moers is on display through June 27. Reception to meet the artist 6-8:30 p.m. Friday, 217 Pierce, Birmingham.

● **TROY ART GALLERY**
Friday, May 15 — Recent paintings by Bertha Cohen are on display through June 6. She is a local artist who has won many awards both here and abroad for her strong figurative works. Reception 6:30-9 p.m. Friday. Hours are 11 a.m. to 5:30 p.m. Tuesday-Friday and until 4 p.m. Saturday, 755 W. Big Beaver, Suite 131, Troy.

● **SHAIN PARK**
Saturday, May 17 — Birmingham Art Fair kicks off the Michigan Week activities. In addition to displays by more than 140 exhibitors, there will be a children's activities area and food booths with lots of selections. Shain Park is one block south of Maple between Bates and Helinetta. Art Fair is sponsored by the Birmingham Bloomfield Art Association, 10 a.m. to 6 p.m. Saturday and Sunday only.

● **ROBERT L. KIDD ASSOCIATES**
Friday, May 18 — Paintings by Sam Gilliam and new sculpture by Gary Kulak will be on display through June 13. Opening reception 3-5 p.m. Saturday, Hours are 10:30 a.m. to 5:30 p.m. Tuesday-Saturday, 107 Townsend, Birmingham.

● **OAKLAND COUNTY GALLERY**
Tuesday, May 19 — Elizabeth Yorgen's acrylic paintings, part of her American Road Series, will be on display through June 18. Reception for the artist 6-8 p.m. May 19. Wednesday-May 20 — Watercolors by Bonnie Brede are on display through June 19. Reception 6-8 p.m. Thursday, May 21.

Tuesday, May 19 — Exhibit of the work of Minoru Yamasaki will be on display through June. This world renowned architect is being honored posthumously with this exhibit as an outstanding Asian-American.

The Galleria, in the Executive Office Building of the Oakland County complex, 1200 North Telegraph, Pontiac, is open 9 a.m. to 5 p.m. Monday-Friday.

● **CANTOR/LEMBERG GALLERY**
Saturday May 16 — New Editions from 2RC includes works by Sam Francis, Helen Frankenthaler, Nancy Graves and George Segal. Continues through June 6, 528 N. Woodward, Birmingham.

● **SUSANNE HILBERRY GALLERY**
Saturday, May 16, Works by Alex Katz will be on display through June 13. Hours are 11 a.m. to 6 p.m. Tuesday-Saturday, 555 S. Woodward, Birmingham.

● **MANRESSA JESUIT RETREAT HOUSE**
Sunday, May 17 — Two Michigan artists, Regina Engelhardt and Kathleen Clark, both proteges of Sister Mary Ignatius at Mercy Center of Farmington Hills, are featured in the ninth annual art show. Hours are 1-9 p.m. daily. Purchases are tax deductible. Manressa is on the north-west corner of Woodward at Quanton (16 Mile).

● **COMMUNITY ARTS GALLERY**
Sunday, May 17 — "Auschwitz: A Crime Against Humanity," an exhibition from the concentration camp where four million people were murdered, will continue through May 29. The 135 photographs, documents, artifacts and personal belongings are on loan from Auschwitz State Museum in Poland. Hours are 10 a.m. to 4 p.m. Sunday-Saturday. Until 8 p.m. Tuesday and Wednesday, Wayne State University campus. For group tours, call Miriam Schey at the Jewish Community Council, 962-1880.

● **CAROL HOOSERMAN GALLERY**
Ceramic sculpture by D.M.Z. Coyle and white earthenware by Lane K. Orman are on display through May. By appointment only, 647-3666.

● **SCHWEYER-GALDO GALLERIES**
Friday by Lynn Shaler are on display to June 6. She grew up in Birmingham, now lives in New York City, was in France on a Fulbright and has work in the Metropolitan Museum of Art, the Victoria and Albert Museum, London, Biblioteca Nazionale di Paris the Brooklyn Museum and other major museums and collections, 29 W. Lawrence, Pontiac.

● **FEIGENSON GALLERY**
— Sculpture and related drawings by Robert Sestok continue on display through June 13. Hours are 11 a.m. to 5 p.m. Tuesday-Saturday, 310 Fisher Building, Detroit.

● **ARTSPACE**
Current works on display in this resale gallery for fine art are by Rosenquist, Royce Nebecker, Stella and a collection of American Indian baskets, 574 N. Woodward, Birmingham.

● **AMBROSE GALLERY**
Limited edition prints by Peter Keating of Bucks County, Pennsylvania are on display through May. Keating is a painter of American landscapes combining pen and ink and watercolor washes. Hours are 10 a.m. to 5 p.m. Wednesday-Saturday, 421 Walnut, Rochester.

● **ALICE SIMSAR GALLERY**
"New works on canvas" by William Weege will be on display through June 3. Hours are 10 a.m. to 5:30 p.m. Tuesday-Saturday, 301 N. Main, Ann Arbor.

● **IS INC.**
"Pre-Impact," an exhibit of conceptual architecture projects by a group of young, up and coming pros. Open evenings during nightclub

hours, 13 S. Saginaw, Pontiac.

● **MICHIGAN GALLERY**
Fourth annual "Earthen" exhibit continues through May 23. Hours are 11 a.m. to 5 p.m. Thursday-Saturday, 2661 Michigan Ave., Detroit.

● **PONTIAC ART CENTER**
"From Childhood," an exhibit of recent works by Ursula Moustakas, Yuri Krochmaluk, Greta Weekly and Jim Pallas. Curated by Lynne Avvadenka. Artists will talk at 7:30 p.m. Tuesday, May 21. Hours are 9 a.m. to 5 p.m. Tuesday-Thursday and Saturday, 47 Williams, Pontiac.

● **BLOOMFIELD FINE ARTS**
Impressionistic paintings by DeLarue, Dubord, Becker, Jousset and Meugnier are on display through

May. Hours are 10 a.m. to 6 p.m. Monday-Saturday, until 8 p.m. Thursday and Friday, 280 N. Woodward, Birmingham.

● **CADE GALLERY**
"New Work — Landscapes" by John Gans, is a series of large photographs chronicling the effects of human activity on the idealized or natural landscape. Continues through May 27. Hours are 10:30 a.m. to 7 p.m. Tuesday-Saturday, 214 W. Sixth, Royal Oak.

● **HILL GALLERY**
"Views" by Alfred Leslie continues on display through June 20, 163 Townsend, Birmingham.

● **BELIAN ART CENTER**
Paintings and drawings by Paul

Zenlun and stone carvings by Nick Cannizzaro continue on display through May 23. Hours are 11 a.m. to 6 p.m. Monday-Saturday, 5580 Rochester Road, Troy.

● **FRANKLIN BRANCH LIBRARY**
Art by Gertrude Pritz is on display through May. Open during regular library hours, State and Liberty, Farmington.

● **UNIVERSITY OF MICHIGAN MUSEUM OF ART**
"From Seed-time to Harvest" continues through May. Exhibit explores relationship between agriculture and art. Hours are 10 a.m. to 4 p.m. Tuesday-Friday and 1-5 p.m. Saturday and Sunday, 525 S. State at S. University, Ann Arbor.

Historical lithograph is offered

As a part of Michigan's 150th birthday the Great Lakes artist William Moss has produced a limited edition lithograph entitled "Detroit, Michigan — The City of the Straits."

This sesquicentennial project captures the essence of the city's heritage as the busy docks and impressive skyline are depicted as they were in the late 1940s. Although the name of Detroit has become a familiar word in every corner of the globe, its name is derived from the fact that the city is located on a natural waterway of the Great Lakes.

The Sesquicentennial lithographs are available at the Dossin Great Lakes Museum, 100 Strand/Belle Isle, Detroit 48207, from Wednesday through Sunday, 10 a.m. to 5:30 p.m. and the Detroit Historical Museum Gift Shop, 5401 Woodward, from Wednesday through Sunday, 9:30 a.m. to 5 p.m.

For additional information contact John Polasek, curator, Dossin Great Lakes Museum, 267-6440.

Chamberlain REALTORS

"Serving the area's finest communities since 1918"



STEVE LEIBHAN
Vice President-Sales Manager
Lathrup Village Office

Steve Leibhan, Vice President - Sales Manager of Chamberlain, REALTORS Lathrup Village Office invites you to join Chamberlain, REALTORS and experience a rewarding career in real estate sales.

We offer state-of-the-art office facilities, growth oriented training and guidance, and experienced leadership and management.

If you are ready for a change in your present sales position or a new career, Chamberlain REALTORS cordially invites you to call us today!

LATHRUP VILLAGE OFFICE
27313 Southfield Road - N. of 11 Mile
557-6700



EXCLUSIVE 1987 HOMEARAMA PROPERTY
Innovative double wall, super insulated energy-saving construction. Dramatic sunken family and living rooms with two-way fireplace. Many more detailed features. Must see! \$209,000 (P-347) 647-6400



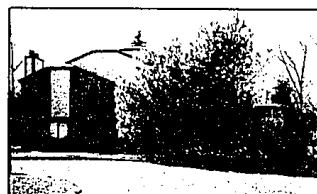
2720 HOMEWOOD - TROY
North of Long Lake and East of Adams. FOUR BEDROOM colonial in one of the most PRESTIGIOUS subs this area has to offer. Sunken family room with full wall fireplace, 1st floor laundry, library. NEW APPLIANCES and MORE! \$189,900 (HW-272) 557-6700



WEST BLOOMFIELD - NEW LISTING
Quality built home in country-like setting on over one acre. Includes 3 bedrooms, 1 1/2 baths, family room, 3 fireplaces, central air, finished basement and attached 2 car garage. \$129,900 (V-734) 851-4400



FARMINGTON HILLS
Briar Hill spacious ranch on lovely large lot featuring 3 bedrooms, 2 full baths, large family room with woodburner, formal dining room, natural fireplace in living room, finished basement and attached garage. \$125,700 (B-298) 851-4400



EVERGREEN WOODS CONDO - SOUTHFIELD
Superb wooded country setting for this great looking 2 bedroom, 2 bath upper level, ranch end unit with private entrance, dining room, cathedral ceilings, fireplace and attached garage. Asking \$79,900. (E-243) 547-2000



IMMEDIATE OCCUPANCY/PRICED RIGHT
Exceptional FOUR bedroom, 2 1/2 bath colonial offering central air, large kitchen with pantry, formal dining room and 2 car attached garage. This home is located in a GREAT FAMILY AREA and close to schools and recreation. \$91,700 (C-256) 557-6700

O&E Classifieds work! O&E Classifieds work! O&E Classifieds work!

VACATION PLANNER

Presented by the

THE
Observer & Eccentric
NEWSPAPERS

CALIFORNIA

GOLDEN COST TOUR—8 DAYS

\$439 COMPLETE PER PERSON

Based on Double Occupancy

From Detroit Metropolitan Airport

DEPARTS TUESDAY, AUGUST 11, 1987—RETURNS WEDNESDAY, AUGUST 19, 1987

OR
DEPARTS TUESDAY, FEBRUARY 2, 1988—RETURNS WEDNESDAY, FEBRUARY 10, 1988

"Your" Price Includes:

- Air Transportation on scheduled airlines with in-flight meals
- To-Your-Room baggage handling
- Hotel/Airport transfers (in California)
- Hotel Accommodations
- Sight-seeing and special events
- Entrance fees
- Fully Escorted

San Francisco Buellton/Bolvang Los Angeles Hollywood

GOLDEN WEST TOUR—8 DAYS

\$439 COMPLETE PER PERSON

Based on Double Occupancy

From Detroit Metropolitan Airport

DEPARTS TUESDAY, SEPTEMBER 1, 1987—RETURNS WEDNESDAY, SEPTEMBER 9, 1987

OR
DEPARTS TUESDAY, JANUARY 5, 1988—RETURNS WEDNESDAY, JANUARY 6, 1988

"Your" Price Includes:

- Air Transportation on scheduled airlines with in-flight meals
- To-Your-Room baggage handling
- Hotel/Airport transfers (in California)
- Hotel Accommodations
- Sight-seeing and special events
- Entrance fees
- Fully Escorted

Palm Springs Calico Ghost Town Los Angeles Hollywood

YOUR MAN TOURS

24824 MICHIGAN AVENUE
DEARBORN, MI 48124
(313) 278-4102

Please send me at no obligation a tour brochure explaining all the details and regulations for the following tour:

- ☐ CALIFORNIA GOLDEN COAST TOUR
- ☐ CALIFORNIA GOLD WEST TOUR

NAME: _____
ADDRESS: _____
CITY: _____ STATE: _____
ZIP: _____ PHONE: _____

BIRMINGHAM ROYAL OAK
647-6400 547-2000



ROCHESTER BLOOMFIELD
651-4100 644-6788

SOUTHFIELD/LATHRUP
557-6700

TROY
613-8500

WEST BLOOMFIELD
851-4400

For a career in real estate contact any of the offices above