

# Polarizer filter adds impact to photos

Few photo accessories can add as much impact to your shots as a polarizer filter.

It takes an investment of only \$12-\$20 to put this most exciting filter on your lens and it will pay for itself many times over in increased impact.

Polarizers do a number of things: 1) darken blue skies; 2) remove reflections from non-metallic surfaces; 3) penetrate haze; and 4) increase color saturation.

Here's how a polarizing filter works:

• When a light ray hits a non-metallic surface such as glass or water, part of it is reflected completely in one direction. This is called "polarized light." Light from a blue sky is polarized because it is reflected off particles in the atmosphere.

• A polarizing filter consists of two pieces of glass which rotates relative to one another. When the rotation is 90 degrees, the polarizer will block the "polarized light" in the sky. Because less light now strikes the film, the result in the final picture will be a darker blue sky.

• A polarizing filter works for both color and black and white film. To obtain the maximum darkening effect, try to take your shot at a right angle to the sun.

• And in black and white photography, use a polarizer in combination with a red filter for an absolutely black sky effect. Further, because you're always looking directly through the lens of your single lens reflex cameras, you can see the darkening effect happening as you rotate the filter. Remember a polarizer will not darken an overcast sky.

• A polarizing filter will reduce reflections on non-metallic surfaces. For example, it helps get



photography  
**Monte Nagler**

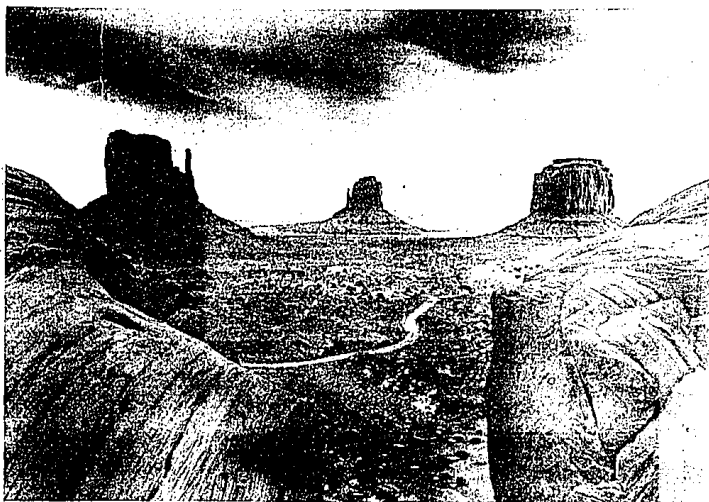
rid of unwanted reflections on a lake or disturbing glare from a store window.

The degree of control of removing reflections depends on the camera-to-subject angle and the amount of rotation of the filter. Often, an unwanted reflection can be completely eliminated.

As in darkening a blue sky, what you see is what you'll get with your SLR camera. Looking through the viewfinder, you can actually watch reflections being eliminated.

• Color saturation can be increased with a polarizer. There are two types of light reflected by most surfaces, specular and diffuse. Specular reflections are neutral (no color) and tend to dilute the diffuse reflections (those that give objects their color). But a polarizer absorbs the specular reflections, allowing the diffuse, colored light through to the film. The result is an increase in color saturation.

As with most filters, you need to be aware that a polarizer has a filter factor. It reduces the amount of light reaching the film. You will need to increase your exposure by about 1 1/2 stops. But because your SLR has through-the-lens metering, the exposure adjustment is automatic, so you'll be better able to concentrate on improving your photography with a polarizer filter.



The dramatic sky in Monte Nagler's photograph of Monument Valley was obtained by using a polarizing filter. Notice how it gives added impact to the shot.

## Miscues hurt 'Figaro'

Continued from Page 1

The show's best acting came from Chris Jones Wehrill as Chorubino. Although her voice was not as secure in her two arias "Non so piu" and "Voi che sapete," she understood her character and gave life to otherwise dull scenes.

Aaron Hunt also managed to elicit some reaction to his portrayal of the lawyer Don Curzio.

Chooyee Lee, as Susanna, did not have the depth in her middle range to project the sound in either her recitatives or her arias. Her acting was quite delightful. Unfortunately, it was difficult to understand her diction or that of the others.

Along with poor stage direction,

### review

the chorus was vocally weak, uneven in harmony, and used little shading in the expression.

It is unfortunate that Arthur Rizzo's direction and the vocal standards did not match the quality of the other aspects of this production mentioned earlier. Otherwise, it would be a hit.

Mary Jane Doerr is a freelance music reviewer who lives in West Bloomfield.

*We need you!*

We need carriers for Observer & Eccentric routes.

Call 591-0500 to find out all about it.

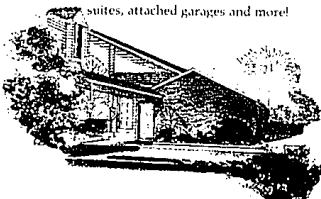
## 1987 MODEL PREVIEW

All New

Two Bedroom, Two Bath Plans  
From \$98,900 in West Bloomfield

Sound enticing? Visit Mapleridge and let us show you luxurious condominium living with studio ceilings, Eurostyle kitchens with

G.E. appliances, over-sized bedroom suites, attached garages and more!



Final Opportunity  
Phase I Models from \$93,900

Located on Maple Road 1/4 mile West of Drake. Furnished models open daily and weekends: noon to 6 p.m. by appointment. Closed Thursday. Telephone: 661-4800

**MAPLERIDGE**  
CONDOMINIUM  
An Edys, L. Singer & Son Community Development



**Merrill Lynch Realty**



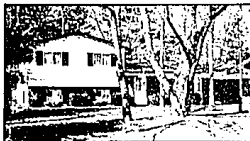
**WONDERFULLY SPACIOUS NEWER HOME** in a very desirable area. 4 bedrooms, 2 1/2 baths, formal dining room, library/study and many special features including 1st floor laundry, French doors to deck and crown moldings. Large dimensions! \$275,900 626-9100



**YOUR DREAM HOUSE - Country living** in the city. 3 bedrooms, living room, formal dining room, large country kitchen and family room with a breakfasting view. Finished basement and two car garage. A real delight! \$159,000 626-9100



**TERRIFIC RANCH with private yard** of pine trees. Home boasts 3 bedrooms, living room, country kitchen, family room and rec room with workshop. Central air and high garage door for van. Freshly painted inside and out. Move-in condition - hurry! \$124,500 626-9100



**IMMACULATE TRI-LEVEL** boasts 3 bedrooms, expansive family room, breakfast nook, neutral decor throughout and plentiful storage! This home offers an abundance of privacy and spectacular views from the two decks! Move-in condition. \$86,900 626-9100



**ATTRACTIVE 4 BEDROOM COLONIAL** boasts formal dining room, 2 1/2 baths, family room, appealing and functional kitchen and a covered porch perfect for future garden or Florida room. Tasteful, neutral decor. Wonderful family home! \$259,900 626-9100



**POPULAR FAMILY SUBDIVISION.** Home provides 4 bedrooms, 2 1/2 baths, living room, formal dining room, breakfast nook, spacious family room, wood deck off kitchen and central air. Conveniently located for shopping. A great buy! \$132,500 626-9100



**BEAUTIFUL 4 BEDROOM COLONIAL** features 2 1/2 baths, formal dining room, spacious family room, newer kitchen with center island, rec room and 1st floor laundry. Extras include massive fireplace and French doors to patio. Schools within walking distance. \$168,500 626-9100



**SHARP RANCH IN CRANBROOK VILLAGE** features 3 bedrooms, living room, formal dining room and updated kitchen - a chef's delight. Extras include Cathedral ceilings, central air, fireplace and hardwood floors. Swim club also available. A great buy! \$75,900 626-9100



**QUALITY BUILT COLONIAL HOME** situated on cul-de-sac features Cathedral ceiling, open foyer with circular staircase, 4 bedrooms and library. Huge walk-out basement ideal for table tennis or pool table. Also a country kitchen breakfast area. Beautiful setting on premium wooded lot. \$244,900 626-9100



**PERFECT CONDO!** Better than new - many, many upgrades located within minutes of transportation and downtown areas. 2 bedrooms, 2 baths, dining room and 1st floor laundry. Basement could be finished easily. Great lifestyle! \$131,000 626-9100



**PRIME LOCATION - MOVE RIGHT IN!** Neat home features 3 bedrooms, living and dining room, family room and Florida room. Great summer fun with Walnut Lake privileges for boating and swimming. Birmingham schools location. \$69,000 626-9100



**GREAT LOCATION - CRANBROOK SUB.** This Colonial Tri-level home features 3 bedrooms, living and dining rooms, breakfast nook, family room and 1st floor laundry. Loads of storage space, fireplace, new roof, new siding and a walk-out patio to enjoy the summer months! \$69,000 626-9100

BIRMINGHAM/BLOOMFIELD

1520 N. Woodward  
at Long Lake Rd.  
646-6000 647-5100

FARMINGTON HILLS FRANKLIN

31000 Northwestern  
at 11 Mile Rd.  
626-9100

TROY

5017 Rochester Rd.  
at Long Lake Rd.  
689-8900

ROCHESTER

1000 W. University  
651-8850

WEST BLOOMFIELD

4310 Orchard Lake Rd.  
in Meadowbrook Park  
851-8100

NOVI/NORTHVILLE

37000 Grand River  
E. at Haled  
478-5000