

exhibitions

● PARK WEST GALLERIES

Thursday, Oct. 29 — "Scenes from the Belle Epoch," a collection of etchings by Manuel Robbe, continues on display through November. Robbe, born in Paris in 1872, is considered one of the fine printmakers working in the early years of the 20th century. Opening reception 8 p.m. Thursday. Lecture on Robbe by Peter Cooper at 8:30 p.m. Hours are 10 a.m. to 6 p.m. Monday-Wednesday, until 9 p.m. Thursday and Friday and 11 a.m. to 6 p.m. Saturday and Sunday. 29469 Northwestern, Southfield.

● ARNOLD KLEIN GALLERY

Friday, Oct. 30 — New works in watercolor and color pencil by Karen Anne Klein are on display through November. Reception for the artist 7-9 p.m. Friday. Hours are 11 a.m. to 5:30 p.m. Tuesday-Saturday, 4520 N. Woodward, Royal Oak.

● CADE GALLERY

Sunday, Nov. 1 — One artist exhibition of sculpture by Hugh Timlin continues through Nov. 25. Reception 3-7 p.m. Sunday. Hours are 10:30 a.m. to 7 p.m. Sunday, 214 W. Sixth, Royal Oak.

● AMERICAN CENTER

Sunday, Nov. 1 — Art exhibit and sale of works by members of the South Oakland Art Association continues through Nov. 14. Awards reception 2-4 p.m. Sunday. Hours are 9 a.m. to 5 p.m. weekdays, 2777 Franklin, Southfield.

● OAKLAND COUNTY GALLERY

Monday, Nov. 2 — Paintings and drawings by Six Directions, a group of local artists, continues through Dec. 16. They are: Barbara Keidan, Margaret Keltner, Sonia Molnar, F.C. Seafuri, Rita Skoczen and Frances Waring. Their subjects are all from nature. Hours are 9 a.m. to 5 p.m. Monday-Friday. The gallery is in the Oakland County Executive Building, 1200 N. Telegraph, Pontiac.

● PRESTON BURKE GALLERIES, INC.

Thursday, Nov. 5 — Recent paintings by Irma Cavat will be on display through the month. Reception 7-10 p.m. Thursday, Nov. 10. Call 963-2350 for reservations. Hours are 9 a.m. to 5 p.m. weekdays, 240 E. Grand River, Detroit.

● D&JBITTKER GALLERY LTD.

"Between the Vertical and Horizontal," works on paper by Sholchi Ida are on display through December, 536 N. Woodward, Birmingham.

● SUSANNE HILBERRY GALLERY

Sculpture done between 1983 and 1987 by Richard Rezac is on display

through Nov. 20. Gallery hours are 11 a.m. to 6 p.m. Tuesday-Saturday, 555 S. Woodward, Birmingham.

● HILL GALLERY

American folk sculpture and painting is the focus of the exhibition that continues through Nov. 21, 163 Townsend, Birmingham.

● CANTOR/LEMBERG GALLERY

"Woodcuts & Monotypes," the work of Richard Bosman, is on display through Nov. 21. Hours are 11 a.m. to 5 p.m. Tuesday-Saturday, 538 N. Woodward, Birmingham.

● BIRMINGHAM BLOOMFIELD ART ASSOCIATION

Saturday, Oct. 24 — The faculty exhibition includes works by 60 instructors with a variety of talents and skills. Hours are 9:30 a.m. to 4:30 p.m. Monday-Saturday, 1516 S. Cranbrook, Birmingham.

● OCC-ROYAL OAK

Multi-media works by Catherine Peet are on display through Nov. 13 in the auditorium gallery. Exhibit is sponsored by the Arts and Humanities Club. Hours are 8:30 a.m. to 10 p.m. Monday-Thursday and until 4:30 p.m. Friday, 739 S. Washington, Royal Oak.

● I. IRVING FELDMAN GALLERIES

Recent paintings by Harold Linton will be on display through Nov. 30. The exhibit, "Between Matter and Spirit" is 14 large canvases, which explore color relationships and arrangements. Continues through Nov. 30. Hours are 10 a.m. to 5 p.m. Monday-Saturday, 6917 Orchard Lake, West Bloomfield.

● NAWARA GALLERY

"Jim Nawara: Recent Landscapes — Paintings and Drawings" continues through Nov. 28. He is professor of art at Wayne State University and combines consciousness of form and realistic detail with an abstract sense of composition. Hours are 1-5 p.m. Tuesday-Friday and 11 a.m. to 5 p.m. Saturday, 1160 Welch Road, Wall Lake, just north of Maple.

● ST. MARY'S GALLERIA

Exhibit of Kubinski Art Competition entries continues until Nov. 3. Sunday. Hours are noon to 2 and 6-8 p.m. daily and noon to 5 p.m. Sunday, St. Mary's College campus, Orchard Lake.

● CANTOR/LEMBERG GALLERY

New woodcuts and monotypes by Richard Bosman. His work has been exhibited in major museums and galleries in United States and Eu-

rope. Continues through Nov. 18. Hours are 11 a.m. to 5:30 p.m. Tuesday-Saturday, 538 N. Woodward, Birmingham.

● DETROIT ARTISTS MARKET

"Michigan 150" celebrates Michigan's 150th anniversary with art by southeastern Michigan artists. "Graphite: A Drawing Exhibition" by Mel Rosas is in the Upper Gallery. Regular hours are 11 a.m. to 5 p.m. Tuesday-Saturday, 1452 Randolph, Detroit.

● HENRY FORD COMMUNITY COLLEGE

Retrospective of drawings, sculpture and ceramics by Margaret Sauer continues through Nov. 6. She taught at the College along with other institutions. Hours are 10 a.m. to 5 p.m. Monday-Friday, 6-8 p.m. Tuesday and Wednesday, Sixteen Art Gallery, 5101 Evergreen, Dearborn.

● LINDA HAYMAN GALLERY

"Party Princesses" by Deborah Kashdan and works by Ricki Berlin, Daniel Lencioni, Craig Rehder, Jacqueline Woolf, Maynard and The Southern Group. Hours are 9 a.m. to 6 p.m. Monday-Friday, until 8 p.m. Thursday and 10 a.m. to 5 p.m. Saturday, La Mirage Mall, 29555 Northwestern, Southfield.

● XOCCHIPILLI GALLERY

Paintings by Stephen Goodfellow are on display through Nov. 4. Hours are 11 a.m. to 5 p.m. Tuesday-Saturday, 568 N. Woodward, Birmingham.

● DETROIT GALLERY OF CONTEMPORARY CRAFTS

Wearables created by nationally

known artists are on display through Nov. 14. Hours are 11 a.m. to 5 p.m. Monday-Saturday, 301 Fisher Building, Detroit.

● MICHIGAN GALLERY

Eight Michigan artists, working in a variety of media are featured in "Eight," which continues through the month. Hours are 11 a.m. to 5 p.m. Wednesday-Saturday, 11 a.m. to 5 p.m., 2661 Michigan, Detroit.

● ROBERT KIDD GALLERY

New Paintings by Alberto Magnani and new glass sculpture by Mark Abildgaard continue on display through Nov. 4. Magnani is a realist who chooses wearing apparel for his subject material. Abildgaard is showing cast glass totemic forms. Hours are 10:30 a.m. to 5:30 p.m. Tuesday-Saturday, 107 Townsend, Birmingham.

● RUBINER GALLERY

Landscape and still life paintings by William House are on display through Nov. 7. Regular hours are 10 a.m. to 5:30 p.m. Tuesday-Friday, until 5 p.m. Saturday, 7001 Orchard Lake, West Bloomfield.

● DUKE GALLERY

Retrospective of works by William E. Hutschel, whose interesting background as a designer for Rookwood Pottery, painter, teacher, innovator and influential teacher who died in 1962 has just been documented. The show of his work in a wide variety of media continues through November. A 16-page catalog accompanies the exhibit, 185 N. Woodward, Birmingham.

● PAINT CREEK CENTER

"Little Mysteries" an exhibit of works by Sandra Goodspeed, Tom Humes, William McKee and Jo Powers continues through Nov. 6. Hours are 10 a.m. to 5 p.m. Tuesday-Saturday, 407 Pine, Rochester.

● MEADOW BROOK ART GALLERY

"Magic in the Mind's Eye," objects and art works from the collection of Kempf Hogan of Birmingham, continues through Nov. 8. A second part of his collection will be shown Nov. 22 through Dec. 27. Hours are 1-5 p.m. Tuesday-Friday and 2-6:30 p.m. Saturday and Sunday plus evenings when there is a theater performance 7:30 through the first intermission, Oakland University campus, Rochester.

● WOODS GALLERY

Paintings by Lucille Nawara are on display through the month, Huntington Woods Library, 26415 Scotia, Huntington Woods.

● TOWN CENTER GALLERY

New works by R.C. Gorman, Robert Nalkin and James Fekete are on display along with pottery, glass and jewelry. Hours are noon to 5 p.m. Monday, 10 a.m. to 5 p.m. Tuesday-Friday and until 3 p.m. Saturday, 3000 Town Center, Suite 45, Southfield.

● DETROIT INSTITUTE OF ARTS

Photographs by Clarence Kennedy. Hours are 9:30 a.m. to 5:30 p.m. Tuesday-Sunday, 5200 Woodward, Detroit.

● O'NEILL POTTERY

The gallery features functional and non-functional high-fire stoneware and limited collection of local ceramic photos in this studio/gallery in a 118 year old farm house, 1841 Crooks, Rochester. For information, call 375-0180.

Endangered hawk needs help

Michigan wildlife officials are seeking ways to protect the red-shouldered hawk, an already threatened species endangered by raccoons in northern forests. Surveys this summer show raccoons destroyed six of 26 nests and devoured nine young hawks in the Pigeon River State Forest in Otsego and Cheboygan counties.

Fewer than 300 pairs are believed to be left in Michigan, most of them in the Grand Traverse area and the northern tip of the Lower Peninsula, said Bert Ebberts, a wildlife biologist who conducted the survey for the

state Department of Natural Resources. The birds once flourished in southern Michigan but were wiped out by urban expansion. Predator raccoons find the hawks easily because heavy rains wash the scent of the hawks' nest to the ground.

"Raccoons climb trees to reach the nests and pose a new danger to a species already listed as threatened," Ebberts said. "We may have to put up protective shielding, 3-foot-long strips of metal over which the raccoon couldn't climb."

Team Up With The Best!



PRIVATE LAKEFRONT HOME with fantastic view! This attractive ranch features 3 bedrooms, great room, formal dining room, 1st floor laundry, natural fireplace and patio. Complete privacy! \$280,000 828-8100



DRAMATIC CONTEMPORARY ON FABULOUS LOT! Great family subdivision in private cul-de-sac setting backing to commons. Features formal and oak u-shape kitchen, beautiful fireplace, neutral decor, skylight, doorways to multi-level deck, central air and 3 bedrooms. \$190,000 828-9100



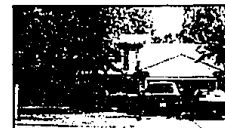
TALK OF THE NEIGHBORHOOD! Attractive contemporary home featuring 3 bedrooms, 2 1/2 baths, 2 fireplaces, cathedral ceiling in living room, jacuzzi in master bedroom. Fabulous multi-level decking! Heart Warming! \$173,900 828-9100



COUNTRY SETTING IN WEST BLOOMFIELD! Beautiful treed lot situated on over an acre, large 4 bedroom custom built brick ranch with endearing features! Full length, full windows, family room with beams, large natural fireplace. Honey! \$164,900 828-9100



SHARP FARMINGTON HILLS RESIDENCE! Beautifully landscaped yard, 3 bedrooms, 2 1/2 bath colonial features central air, natural fireplace, formal dining room, family room with bookshelves, charming brick patio and deck. Don't miss out, come and see it for yourself! \$129,900 828-9100



SPACIOUS COLONIAL in Cranbrook Village with Birmingham schools! Featuring a chefs delight kitchen, newer south tone carpeting, hardwood floors, family room with fireplace and doorwall flowing out to patio. Newer furnace and water tank. \$108,900 828-9100



TRIANGLE SETTING - BRILLIANT FLOOR PLAN! Beautiful Shorewood model on cul-de-sac setting exhibits 4 bedrooms, 3 1/2 baths, spacious great room, formal dining room, 1st floor laundry, 1st floor master bedroom with deck, full basement, innovative kitchen, and much, much more! \$207,900 851-4100



PICTURESQUE SETTING situated on almost 1/2 acre on private Green Lakes! Well maintained ranch with hardwood floors throughout, built-in shelves, buffet in dining room, fireplace in living room, central air. Exterior boasts patio, deck and BBQ grill. \$229,500 851-4100



LAKEFRONT RANCH IN WEST BLOOMFIELD! Extensive use of tile, brick and decking, lower level finished walk-out, 4 bedrooms, hardwood floors, and charming screened porch with large fireplace. Enjoy central air, wet bar and lake privileges. Hot Tub! \$154,900 851-4100



LOVELY END UNIT CONDO in great location! Features private courtyard entrance, attractive neutral decor throughout, very spacious unit with loads of closet space, 2 bedrooms, 1st floor laundry, and backing to beautiful woods for privacy! \$174,900 846-4000



MOVE INTO AND ENJOY private ravine lot country in the city! Remodeled to an open airy floor plan with parquet floors in foyer, newer carpet, corner fireplace, double patio doors in family room and nook open to 1st floor deck, 1st floor laundry, sprinkler and alarm system! \$145,900 478-5000



SPECTACULAR 4 BEDROOM HOME in West Bloomfield features 2 1/2 baths, formal living and dining rooms, large family room with fireplace, and a 2nd fireplace in master bedroom. Many custom features with neutral tones throughout. \$139,900 478-5000

WE'RE HURTING.

Saving lives can be very expensive. The costs of our disaster relief and other humanitarian programs keep mounting. And we can't afford to come up short.

Please help.



American Red Cross



Merrill Lynch Realty

Real Estate Division

• Novi/Northville - 478-5000
• Farmington Hills - 626-9100
• Birmingham/Bloomfield - 646-6000
• West Bloomfield - 851-8100
• Troy - 689-8900 • Rochester - 651-8850
• Relocation Services • Mortgage Banking
540-7200 647-6678