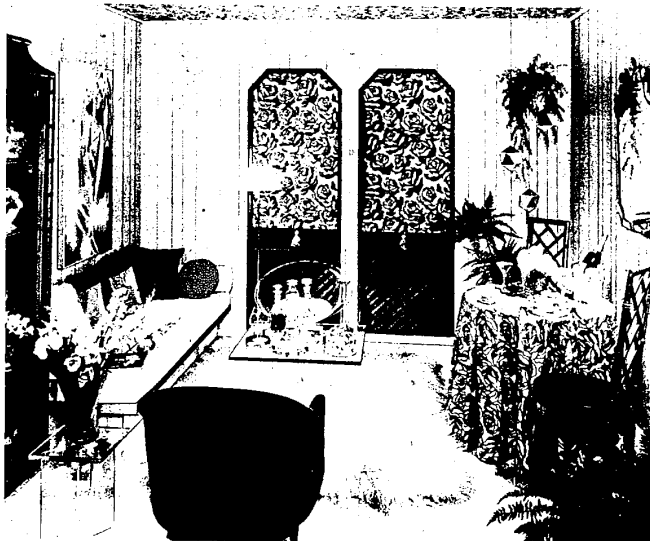


Studio Apartment Has High Style



A COMPACT STUDIO APARTMENT can be attractively furnished without crowding, and on a modest budget, through wise selection of furnishings, floor and wall materials. Alpine Oak wall panels set the light tone, which is complemented by the flexible, washable floor covering and the synthetic fur throw.

Chairs, sofa, wall hangings, tables — all are in scale with the room size. Walls, floors and plastic chair and sofa seats are washable. Planned distribution of light and dark objects, solids and patterns makes for a balanced appearance.

A studio apartment, though compact, can have high style at budget prices.

Furnishing and all six surfaces should suit the limited quarters from standpoints of easy maintenance, scale and unified appearance, according to Norma Brown, home decorating consultant to Masonite Corporation.

A studio apartment designed for a young career woman by Robert Houseman, A.I.D., succeeds in creating a comfortable, attractive room without crowding. Chairs, tables, wall decor, pillows — even a mirror — were scaled to the compact size available.

"As a result," Miss Brown comments, "the apartment is wonderful for living and entertaining, and decorating costs were no greater than if a hedge-podge selection of furnishings had been used."

ONE OF THE elements contributing to this studio apartment's appearance, economy and easy maintenance is prefabricated hardboard wall paneling in Alpine Oak. The stark white paneling contributes to an illusion of space and it wipes clean with a damp cloth.

A tile floor and inexpensive synthetic fur area rug (white on pink) are both wash and wear practical as are plastic-glass-topped coffee and end

tables and a plastic occasional chair.

A second occasional chair in the room is covered in one of the new synthetic fabrics that is equally easy to maintain.

Tablecloth and shades on matching windows feature the same bold pattern that is repeated in an eye-catching ceiling treatment. Dining chairs-two was the limiting built-in bookcase and together these furnishings introduce a dash of Oriental flavor.

Utilizing paneling remnants, the designer scaled a low silhouette, built-in couch topped with a plastic ottoman and pillows covered in solid fabrics to contrast with the rich floral pattern in the room.



Sometimes a scratch on furniture is so light that it will vanish if rubbed with a cloth dampened with furniture polish to which you have added a few drops of rubbing alcohol.

Actual holes in furniture should be cleaned out with a knife to remove the fragments, then partly filled with plastic wood and, when dry, treated with a shellac stick.

The Handyman

I built my picket fence 15 years ago, using 4 x 6 fir posts buried about three feet deep. I think they must be rotten by now. Should I have set the posts in concrete?

No. Wood should not be in direct contact with concrete; this keeps in the moisture and promotes rotting. It's best to keep the posts out of the ground entirely, and this can be done by bolting the wood posts to steel straps embedded in concrete piers.

How can I get rid of mice from my cottage?

See if you can find where they are coming in, then cover the holes with metal. A general sprinkling of moth balls when you close the cottage for the winter will also discourage mice and other rodent pests. There is poisoned seed on the market, but this is dangerous when there are pets and young children.

Please tell me how to remove stains on curtains and walls caused by hair dye.

You can use the lighteners or bleaches recommended by the hair dye manufacturers, but the spots left by the bleach will probably be as bad as the spot left by the dye.

Can you tell me how to polish a brass bed which seems to be buried about three feet deep. I have become stained and discolored? Ordinary brass polishes don't do any good.

It's probably still covered with lacquer, so brass polishes won't work. Use steel wool and lots of elbow grease—it's a hard job! Then protect it with a coat of clear, spray-on lacquer.

We have a dining room suite made from pecan wood and wonder what kind of oil or polish to use on it.

Pecan is a dense, heavy hardwood related to hickory. When finished for furniture, it will not absorb linseed oil, so this treatment is not advised. Any of the common paint, liquid, or spray furniture polishes can be used.

I would like to use barn lumber to finish the walls in our games room. Is there a home-made or commercial finish that can be applied to the boards to seal the surface which does not change the weatherbeaten effect.

Any finish you put on will change the appearance of the wood to some extent. No finish is needed.

Organize Before Moving

To the experienced mover, packing is just part of the moving job. Unpacking is the other part and it can be a long and tedious one.

When you pack, label each carton clearly as to contents and as to the room it is to be placed in. When the moving van arrives, give the van operator a copy of your sketches to show him where you want the furniture placed.

WHEN YOU MAKE an inventory of the things to be moved, do it on a room-by-room basis, based on the rooms in your new home or apartment.

Thus, when you arrive, you can check off each item on the list one at a time, note quickly if anything is missing or misplaced, and avoid taking extra steps.

Shocks Warning

If sparks fly whenever you touch a lamp or metal object — it's a sign that the humidity level in your home has dropped below the danger mark.

When the heating season begins, this moisture is rapidly released and the result is dry air damage.

Dry air causes extensive damage in households each year. In unhumidified heated air, plaster walls, woodwork and paintings will crack, veneers will lift, and furniture frequently loosens and becomes unglued.

A humidifier will restore the needed moisture in the air, adding to individual comfort, protecting furnishings, and reducing heating costs, sometimes by as much as 20 per cent.

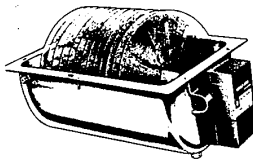
CERAMIC TILE Holiday Special

\$159.00

Tub enclosure area
Cement Installation
Call **421-8882**
RUDDY & BLANCHARD TILE CO.

HUMID-AIRE

"WORLD'S MOST PERFECT HUMIDIFIER"



*DOUBLE GUARANTEED MOISTURE
*MAINTENANCE FREE

FREE INSTALLATION

SPECIAL LOW PRICES LIMIT OUR ADVERTISING. IF YOU ARE THINKING ABOUT A GOOD HUMIDIFIER PLEASE CLIP THIS ADVERTISEMENT.

H&R Hardware
27430 Joy Rd. (Cor. of Inkster Rd.)
GA 1-5161

BANKAMERICARD - MASTER CHARGE

OTHER H & R SPECIALS

PRESTONE **\$159** GAL.
Limit 4
PLASTIC DOOR INSERTS **\$895** INSTALLED

GOLDEN VALUE DAYS fall sale

PARTICLE BOARD
PERFECT FOR TRAINBOARD, SUBFLOOR CABINETS, ETC.
4x8x1/4 \$2.39
4x8x3/8 2.79
4x8x1/2 3.09
4x8x5/8 3.39
4x8x3/4 5.59

Black & Decker
YOUR CHOICE \$24.88 Ea.
U-24C DELUXE DUAL-ACTION FINISHING SANDER Reg. 29.99

TABLE TENNIS C & C TOPS
4' x 5' PARTICLE BOARD Painted green both sides — Tops Only. Also ideal for Train or Hobby Board.
1/2" THICK \$6.97 Pr.
3/4" THICK \$9.47 Pr.
LEGS & TRIM SETS AVAILABLE

Budget Priced PANELS
DESERT-TONE (Lite)
\$2.17 \$3.64
4' x 7' Ideal light shade for Basement Rec. Rooms
Cash & Carry

NO. 7301 7 1/2" 1 HP SAW
Handles big cutting jobs with ease. Quick bevel and depth adjustments. Exhaust keeps sawdust away from cutting line.
2x4-7 FT. **39¢** Each
* Cash & Carry

BIRCH PLYWOOD
CABINET GRADE 4x8x3/4 A2
\$13.95 ea.
Cash & Carry

FOR A LIFETIME OF Beauty

PERMANENT Wipe Clean WALL PANELS
All patterns and colors available. Virtually maintenance free, stays forever beautiful.
4x8 sheets Reg. \$9.98 7 colors **\$8.88** C & C
Moulding that simplifies the job, now **\$1.27** Ea.

YOUR HOME COMES FIRST

Save \$\$ at - PINE LUMBER CASHWAY

buy from a FULL LINE Lumber Dealer

SPECIAL of the Week

Introducing COLOR
A break thru in the usual types of Paneling.
Four brilliant colors to choose from.
Super smooth finish.
Enhance your home with vivid color. C & C

A Completely New Concept IN REAL WOOD PANELING
Introductory Price
4'x8'x1/4" • **GOLDEN LIME** (Luscious as the Fruit) Reg. \$7.97 **\$6.97**
• **BLUE BONNET** (Blue as Blue Sky) Reg. \$7.97 **\$6.97**
• **BUTTERCUP YELLOW** (Like the Texas National Flower) Reg. \$7.97 **\$6.97**
• **FLAME RED** (We Warm Your Heart) Reg. \$7.97 **\$6.97**

REAL NATURAL CORK
8-50 FT. \$1.97 Package
12"x24"x1/2" Thick
Decorates • Insulates
Sound proofs
E.Z. to Apply
Cash & Carry

PLANTER SPINDLES BALUSTER POLES
77¢ up
Largest Selection in Town
Cash & Carry

FEATHERLITE PERMACLOD WHITE COMBINATION STORM-SCREEN DOOR
\$38.88
36x32x80 - Left Hand or Right Hand Hinge M 76

VINYL PANELING ON MAHOGANY
4' x 7' Now \$4.97 4' x 8' Now \$5.97
Cajun Pecan
Winter Elm
English Chestnut
Coventry Birch
Avalanche Hickory
Delaware Walnut
Colonial Pecan
Golden Walnut
Wormy Chestnut
Kilmanjaro Teak
Cash & Carry

GOOSEBUMPLE REMOVER
ZONOLITE® ATTIC INSULATION helps make your whole house warm and cozy. Pour it right over the old fashioned, thin stuff insulation in your attic. Level it even with the joists and leave it.
\$1.39 3 cu. ft. bag C & C

4'x8' - 3/8" DRYWALL
4x8-1/2" \$1.79 C & C

NEW ROOFING
235-lb ROOFING
Wide selection of colors! Cash & Carry **\$2.57** bundles

1x12 Western W. P. SHELVING
Valuable storage space can be added at low cost. All materials in stock.
C & C **17¢** Lin. Ft.

QUALIFIED LUMBER SALESMEN TO SERVE YOU - Charge it on BANKAMERICARD or MASTER CHARGE

WEST SIDE - YARD
2222 Inkster Road
KE 2 - 9037
PINE LUMBER CASHWAY

LINCOLN PARK
3255 Fort St.
386-5177

OPEN THRU
and FRI.
EVENINGS
THRU 9 P.M.