

By Wayne Peal
staff writer

"It's not just a Wayne County problem," association spokesman Michael McCabe said. "There's crack houses in Detroit, Grand Rap-

"We're not an island," said Don Cox, Wayne County Sheriff's Local 502 spokesman. "I think this has

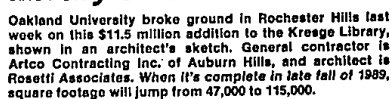
Wayne County would receive the largest share. The money would "free up" money currently being spent for jails and youth camps in the state's most heavily populated county. That money would be used to retire an estimated \$130 million in county debt.

"The only problem with that tax is they have to become more equitable in distribution," Murphy said during taping of "Spotlight on the News" a public affairs program to air this weekend on WXYZ-TV.

"We're not saying these aren't worthwhile projects. We're saying find the money elsewhere," said

Deputies, however, say using part of the tax increase for drug enforcement increases the chances outstate legislators will approve the increase. "How's this for a slogan: Buy a pack, stamp out crack," McCabe said.

Tim Richard contributed to this story.



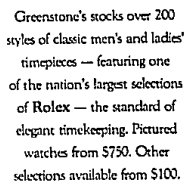
About one-tenth of the money — \$10 million — would find its way to Oakland County roads, according to official estimates.

The higher fees would raise roughly the same amount as a 2.5-cents-per-gallon increase in the state's 15-cent-per-gallon gasoline tax. Blanchard said he would not support a gasoline tax increase.

● \$18.8 million by increasing the cost of a four-year driver's license to \$12. The state now charges \$7.50 for a new driver's license and \$6 for a renewal.

Replacement licenses, meanwhile, would jump from \$1.50 to \$12.

MORTGAGES



GREENSTONE'S
CREATORS OF FINE JEWELRY

528 N. Woodward, Birmingham
4 Blocks N. of Maple 642-2650
Monday thru Friday 9:30 to 6
Thursday until 8, Saturday until

589-3890

"I can see a world without a lot of things...but I can't see a world without teddy bears!"

Visit the
Wonderland of Teddy
Bears & Other
Animals at
**The Doll Hospital
& Toy Soldier Shop**
3347 W. 12 Mile • Berkley • 543-3113
Hours: Mon-Sat. 10-5 • Tu & Fr. 11-9 • Sun. 1-5

Full-cost service at a discount price.

Many investors expect less service for the lower cost of a discount broker. We think you have a right to expect more. At Fidelity Brokerage, our salaried representatives provide you with the timely information and the help you need to make quick, accurate trades—and you can save on every trade!

- *Investment Vision*—Our own investment magazine packed with important news from Fidelity professionals.
- *Investor's Monthly* newsletter free from Standard & Poor's.

2 You can call our telephone service representatives and traders 24 hours a day, 7 days a week or visit one of our Investor Centers during normal business hours. Fidelity's service representatives will provide you with the information you need to make your investment decisions and our traders will efficiently execute your trades.

No matter what you want to trade—stocks, bonds or options—Fidelity Brokerage can save you money. You can trade \$5,000 worth of stock for as little as 7¢ a share.* Compare *that* to what you're used to paying to manage your portfolio!

Our Service doesn't end there. Once you begin trading with Fidelity you'll receive a comprehensive statement listing all your trading activity and investment holdings.

Call toll-free
1-800-544-6767

* Based on a round lot trade of 1000 shares at \$5 per share. Minimum commission, \$33. Fidelity Brokerage Services, Inc., Member NYSE, SIPC.

Bring this coupon to the Fidelity Investor Center and pick up your free *Barron's Dictionary of Finance and Investment Terms*, and get all the information you need to plan your investment portfolio.

Fidelity Investments

CODE: OEN/SOL7121487

50% OFF

50% OFF all pictures, tablelamps and wall accessories December 14-19 only. Come in early for the best selection. Special restrictions for this once-in-a-lifetime sale: First come, first served; no advance sales; no hold orders; no phone orders; no layaways; all merchandise as is; cash & carry; all sales final.

A GREAT WAY TO SAVE ON CHRISTMAS GIFTS
WE'RE REMODELING OUR STORE - EVERY ACCESSORY MUST GO

**WATCH FOR THE BRAND NEW PENNSYLVANIA HOUSE
ACCESSORY COLLECTION PREMIERING IN JANUARY.**

2600 N. Woodward Ave.
Just South of Square Lake Rd.
Fine Furniture Since 1917

Stewart-Glenn
of Bloomfield Hills

332-8348
Open Mon., Thurs., Fri. 'til 9 p.m.
Tues., Wed., Sat. 'til 5:30 p.m.