

exhibitions

WILLIS GALLERY

FRIDAY, JAN. 15 — "Knowledge and the World," a floor installation of multiple ceramic elements and drawings on the walls by Ann Arbor artist, Anat Shifan, will continue through Feb. 4. Opens with a 7-9 p.m. reception Friday. Hours are 2-6 p.m. Wednesday-Saturday, 422 Willis, Detroit.

NAWARA GALLERY

Saturday, Jan. 16 — Paintings by Richard Brooks and sculpture by Rose Brown will be on display through Feb. 20. Opening reception 4-7 p.m. Saturday. Hours are 1-5 p.m. Tuesday-Friday and 11 a.m. to 5 p.m. Saturday, 1160 Welch Road, Walled Lake.

HILBERY GALLERY

Saturday, Jan. 16 — Group exhibition, "Celebration," marks the gallery's 11th anniversary. Continues through Feb. 20. Hours are 11 a.m. to 5 p.m. Tuesday-Saturday, 555 S. Woodward, Birmingham.

JEWISH COMMUNITY CENTER

Sunday, Jan. 17 — Soft paintings and acrylics on canvas by Israeli artist, Calman Shemi. He is building a substantial following both here and in Europe. Reception to meet the artist 8 p.m. Thursday, Jan. 28. Open during regular Center hours in the Hamburger Exhibition Lobby, 6600 West Maple, West Bloomfield.

BIRMINGHAM UNITARIAN CHURCH

Sunday, Jan. 17 — Paintings and mixed media works by Michael Pryde, art instructor in the Detroit public schools. He is a Seaborn High graduate, taught at Birmingham Bloomfield Art Association and has a degree from Northern Michigan University. Open 1-5 p.m. Sundays through Feb. 7, Lone Pine at Woodward, Bloomfield Hills.

COMMUNITY ARTS GALLERY

Monday, Jan. 18 — "Nine Afro-American Printmakers" continues through Feb. 5. Reception 5-7 p.m. Friday, Feb. 2. Hours are 9 a.m. to 5 p.m. weekdays, Cass at West Kirby, Detroit.

SOUTHLAND CIVIC CENTER GALLERY

Monday, Jan. 18 — Paintings by members of the South Oakland Art Association will be on exhibit through Jan. 29. Open during regular business hours, lobby of Parks and Recreation Building, 26000 Evergreen, Southfield.

CONGREGATIONAL CHURCH OF BIRMINGHAM

Thursday, Jan. 21 — Paintings by Christine Welch and porcelain by Fanelore Fasciszewski will be on exhibit through Jan. 28. Open 11 a.m. to 4 p.m. daily and noon to 4 p.m.

Sunday, 1900 Cranbrook, Bloomfield Hills.

ART GALLERY OF WINDSOR

"Music to Matter the Valtz Series" by Michael Hall of the Cranbrook Academy of Art faculty continues on display through Feb. 10, 4445 Riverside Drive West, Windsor.

PIERCE STREET GALLERY

"Intimate Places" features works by eight recognized photographers. Continues through Feb. 13. Hours are 11 a.m. to 5 p.m. Wednesday-Saturday, 217 Pierce, Birmingham.

SOMERSET MALL

Camelot Art of London is presenting an exhibit of Bavarian art through Jan. 17. The offerings range from classical style oils to ultra-contemporary by 30 artists from Austria, Germany and Hungary. All work is for sale. Open during regular mall hours at no charge, Big Beaver at Coolidge, Troy.

DETROIT FOCUS

This annual "Artists Choose Artists" exhibit features works by Carol Jacobsen, Sharon Que, Kathy Constantines and Ray Wetzel. Hours are noon to 6 p.m. Wednesday-Saturday, 743 Seaborn, Detroit.

DETROIT ARTISTS MARKET

"The Market Selects: Al Hinton and Jens Plum" continues for a month. In the upper gallery are works by four emerging women artists, Lynn Callicott, Deborah Casner, Ruth Goldstein and Marian Mudie. Hours are 11 a.m. to 5 p.m. Tuesday-Saturday, 1452 Randolph, Detroit.

BIRMINGHAM BLOOMFIELD ART ASSOCIATION

"Calligraphic Reflections," annual juried event by the Michigan Association of Calligraphers continues through the month. Hours are 9:30 a.m. to 4:30 p.m. Monday-Friday, 1516 S. Cranbrook, Birmingham.

55 PETERBORO

Collection of new works by ceramist, William R.T. O'Bryan. He was born and raised in the metropolitan area, studied in California under Vouliou and now lives in rural Fumoto, Japan with his wife and daughter. Included is traditional tea ceremony ware with "shunga" imagery, a combination of classical form and contemporary decoration, watercolors, mixed media, photography and literary works. A video documentary of his work will be on view during the exhibit. Hours are 1-5 p.m. Friday-Sunday.

Arts and Crafts from Cranbrook

"The Arts and Crafts Movement: Works from the Cranbrook Collection" is on exhibit at Cranbrook Academy of Art Museum through March 6. At left is a porcelain vase, 1914, by Adelaide Alsop Robineau and at right is a silver and enamel trivet, 1925, by Arthur Nevill Kirk. Cranbrook founder, George Booth, was an ardent supporter of the Arts and Crafts Movement.

BROADWAY GALLERY

"Recurrent Dreams: The River Barge," a show of paintings by Minneapolis painter, Stephen Olson, continues through Feb. 5, 1369 Broadway, at the People Mover Station, Detroit.

CADE GALLERY

Sculpture in bronze and paintings by Patrick Foley and Monica Molinaro continue on display through Feb. 3. Hours are 10:30 a.m. to 7 p.m. Tuesday-Saturday, 214 W. Sixth Street, Royal Oak.

PONTIAC ART CENTER

"New Initiatives for the Arts" is in the Main Gallery through Feb. 26 and "Native American Indian Art" by Michele Gauthier and Steven Otton continues to the same date, 47 Williams, Pontiac.

JOY EMERY GALLERY

Gallery Selections, an exhibit of

painting and sculpture, will continue through Feb. 20. Among those represented are Nicholas Africano, Charles Arnold, Richard Basman, Betty Brownlee, Carl Demulenares, Jim Dine, Eric Fischl, Mary Frank, David Hockney, Lucien Freud, Howard Hodgkin and John Walker. Hours are 11 a.m. to 6 p.m. Tuesday-Saturday, until 8 p.m. Thursday, 131 Kercheval, Grosse Pointe Farms.

HILL GALLERY

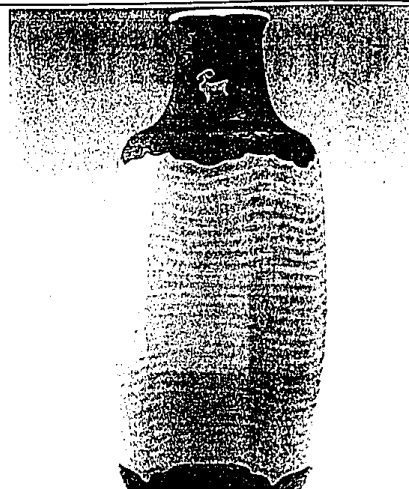
"Works in Cardboard" by Michael Hill is on display through Feb. 13, 163 Townsend, Birmingham.

FRANKLIN SQUARE GALLERY

Recent paintings by Bertha Cohen of Bloomfield Hills will be on display through Feb. 18. 1404 floor atrium, 900 N. Franklin, Chicago.

MICHIGAN GALLERY

"Off the Wall — Houston Artists Exhibit in Detroit," is the gallery's



first national exchange show. In return "No Brand Art" with videos is currently at Lawndale Art and Performance Center, University of Houston, 2681 Michigan Ave., Detroit. Hours are 11 a.m. to 5 p.m. Tuesday-Friday and 1-5 p.m. Saturday.

TROY ART GALLERY

"Mixed Media & Figurative Art" continues on display through Feb. 27. Included are works by Bearden, Boyer, Haas, Honda, Muleme, Quint, Evelyn Raskin, Raphael Soyer and Susan Thomas. Hours are 11 a.m. to 5:30 p.m. Tuesday-Friday and 11 a.m. to 4 p.m. Saturday, 755 W. Big Beaver, Troy.

U-M MUSEUM OF ART

Exhibit of Shoowa Textiles continues through Feb. 7. These textiles in a range of styles and patterns are handmade exclusively by women of natural fibers and may take more than a year to produce. The patterns are reminiscent of Mondrian and

Vasarely and were greatly admired by Matisse. Hours are 10 a.m. to 4 p.m. Tuesday-Friday, 1-5 p.m. Saturday and Sunday, 525 S. State at S University, Ann Arbor.

SIDE STREET GALLERY

"Jewelry with a Past" continues through Feb. 13. Also on display are selections of glass, fibers, ceramics, wood and watercolors. Hours are 11 a.m. to 5:30 p.m. Tuesday-Saturday, 912 S. Woodward, Suite 100, Birmingham.

DETROIT INSTITUTE OF ARTS

"The Art that is Life: The Arts and Crafts Movement in America, 1875-1920" continues through Feb. 28. More than 200 examples from architectural drawings by Frank Lloyd Wright to glass by Louis Comfort Tiffany are included. Admission charge \$3. Hours are 9:30 a.m. to 5:30 p.m. Tuesday-Sunday.



HISTORICAL DELIGHT in downtown Farmington with 1870 sq. ft., 3 bedrooms, 2 baths, large family room with natural fireplace, hardwood floors and loads of closet space. Master bedroom on 1st floor with master bath. \$105,000, 477-1111.



DOWNTOWN FARMINGTON. Victorian colonial in historic Farmington village overlooking Warner Museum and garden. Deep lot and location will challenge the imagination. A bargain for buyers interested in restoration. \$79,900, 477-1111.



WALK TO DOWNTOWN FARMINGTON from this four bedroom vintage home. Natural fireplace in living room, plus family room and basement. Show and sell \$124,900, 477-1111.



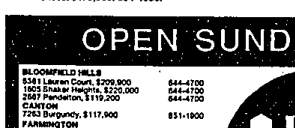
BEAUTIFUL, OLDER HOME in downtown Farmington. Built in 1900, completely redone inside and out in neutral tones. Mint condition. New kitchen, roof, furnace, siding, extra windows, air conditioning and much more. \$89,900, 477-1111.



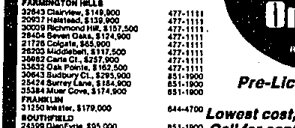
GREAT FLOOR PLAN. 3 bedroom ranch on hilltop setting. Finished basement with sauna, 1st floor laundry, hardwood floors, immaculate move-in condition, neutral decor, 27 acre private park in subdivision. \$129,900, 477-1111.



IMPRESSIVE PILLARED Colonial offers formal dining room, den, natural fireplace in family room, partially finished basement. Close to shopping, freeway access and all conveniences. \$178,900, 851-1900.



2387 Brookline, \$97,500
3634 Lansbury, \$127,500
4420 Maryland Court, \$125,500
33107 Thomas, \$29,900
3493 Grand River, \$105,000
33710 Grand River, \$75,900



32843 Chelver, \$148,800
32587 Northwood, \$121,500
30029 Northwood, \$121,500
17128 Colgate, \$85,900
25522 Midland, \$124,900
38982 Cane Ct., \$237,900
38982 Cane Ct., \$182,500
39643 Beldrey Ct., \$295,900
34424 Beldrey, \$184,900
35384 Murr Cove, \$174,900



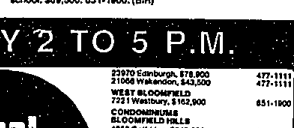
MOVE RIGHT INTO THIS sharp, neutrally decorated 2 bedroom, 2 bath Farmington Hills Condo. Includes central air, all appliances, vet. bat, mirrored doors and carpet. \$72,500, 851-1900. (TWE)



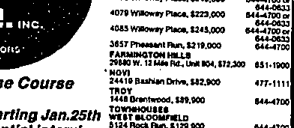
LAFAYETTE MODEL boasting almost 3700 sq. ft. 27 x 17 gorgeous family room with beautiful fireplace and fireplace, immaculate move-in condition, neutral decor, pool with lake rock waterfall formation. \$189,000, 851-1900. (CON)



A GREAT PLACE TO START located in one of Farmington's best family neighborhoods. This home offers the young family 3 bedrooms, 2 baths, family room and study. Walk to elementary school. \$89,500, 851-1900. (BR)



23870 Cambridge, \$78,900
21006 Wakefield, \$43,900
WEST ALCOCKFIELD
7231 Westbury, \$102,900
CONDOMINIUMS
BLOOMFIELD HILLS
4055 Wilshire Place, \$223,000
4052 Wilshire Place, \$223,000
4054 Wilshire Place, \$223,000
4056 Wilshire Place, \$223,000
4078 Wilshire Place, \$223,000
4079 Wilshire Place, \$223,000
4083 Wilshire Place, \$223,000
3857 Pleasant Run, \$219,000
FARMINGTON HILLS
29820 W. 12 Mile Rd., Unit 804, \$72,500
TROY
2441 Baskin Drive, \$82,900
1440 Brentwood, \$89,900
TOWNEHOUSE
2154 Rock Run, \$125,900



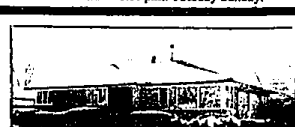
2414 Baskin Drive, \$82,900
1440 Brentwood, \$89,900
TOWNEHOUSE
2154 Rock Run, \$125,900



2 & 4 BEDROOM BRICK RANCH. Beautiful corner lot, 2 1/2 baths, 3 or 4 bedrooms, 2 car attached garage, newly decorated, Master bath, 2 fireplaces, French door to dining room. Fruit tree in backyard. Finished basement. \$99,000, 851-1900.



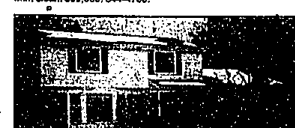
ELEGANT HOME. New part of Sharon Meadows. Mint condition, cathedral ceiling in living room, French doors from the dining room. Family room with fireplace. Recessed lights. \$107,000, 559-2300.



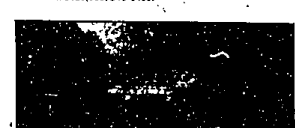
DESIRABLE 3 BEDROOM RANCH. 1736 square feet, large corner lot on wide boulevard street. Large bedrooms, part finished basement, all appliances, immediate occupancy. \$49,500, 559-2300.



BIRMINGHAM SCHOOLS. Beautiful three bedroom colonial. Note master bedroom size 20.3 x 12.4 with a master bath. All neutral color carpeting. Contemporary off white kitchen cabinet. Mint clean. \$99,000, 644-4700.



PLYMOUTH. 4 bedroom, 2 1/2 bath Colonial overlooking 2nd private yard. Neutral decor. 18 x 12 Florida room. Finished basement. \$125,900, 548-6430.



3 BEDROOM RANCH. Main level in home recently redecorated. Great potential. Master plan zoned office. \$175,000, 548-6430.



SHARP CONTEMPORARY CONDO - 3 bedrooms, open floor plan, sliding door to deck, track lighting, mirrored doors, microwave, refrigerator, stove, dishwasher, washer and dryer. Central air, all window treatments stay. Separate entrance. Lots of Extras. Ready to move in. \$100,000, 841-6700.