

# ADVANCE SHOWING OF THE MOST ADVANCED CUTLASS EVER.

## THE ALL-NEW CUTLASS SUPREME.\*

It is almost a paradox that a car so sleek and elegantly styled is also tough as nails. But that's Cutlass Supreme. So sleek it could give aerodynamics lessons to a teardrop.

Yet with its extensive glass areas and specially crowned body panels, it is one of the most rigid Oldsmobiles ever engineered. Also one of the most corrosion-resistant. Exterior body metal is two-sided galvanized steel. The exhaust system, stainless steel.

Take the wheel and enjoy a great new Cutlass Supreme ride, with 2.8-liter multiport fuel-injected V6, 4-speed automatic overdrive transmission, power rack-and-pinion steering, 4-wheel disc brakes and independent rear suspension.

It's no wonder that a specially equipped version of the Cutlass Supreme International Series was selected to be the 1988 Indy Pace Car.

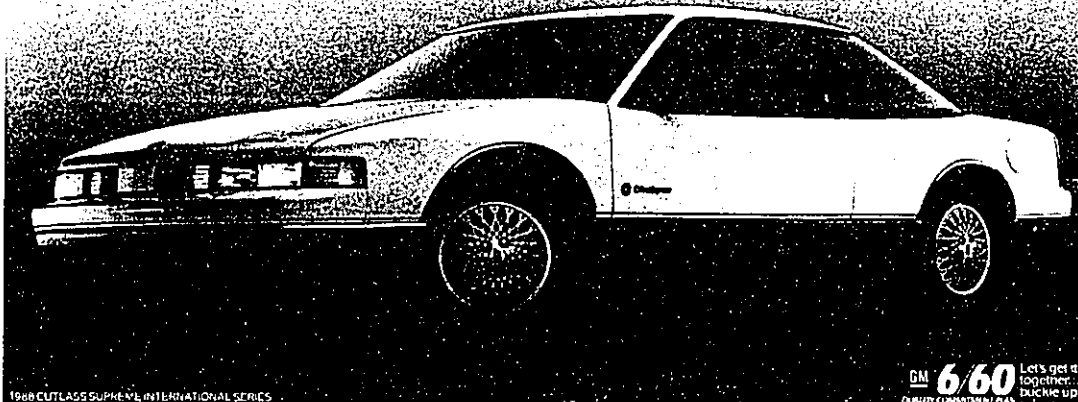
Also on display are outstanding Oldsmobiles that are available and for sale right now. Remarkable cars like the uncompromising 1988 Oldsmobile Cutlass Calais International Series with GM's revolutionary twin-cam, 4-cylinder, 16-valve Quad 4 engine.

Remarkable cars...outstanding quality...from the engineers at Oldsmobile. Stop in and see them today!

\*On display at the Auto Show. Available for sale after February 15, 1988. See your Oldsmobile dealer for details.



OLDSMOBILE QUALITY.  
FEEL IT.



1988 CUTLASS SUPREME, INTERNATIONAL SERIES

GM **6/60** Let's get it  
together...  
QUALITY COMMITMENT PLAN. BUCKLE UP.

SEE YOUR OLDSMOBILE DEALER FOR THE TERMS  
AND CONDITIONS OF THE QUALITY COMMITMENT PLAN.

See the Oldsmobile display at the Detroit Auto Show...  
Cobo Hall... January 16-24