

# Find drama in nature's patterns

Photographs don't always need a central subject. Because patterns are encountered so often in our daily lives, they can play an important part in our photography. Patterns can make order out of chaos and lend rhythm and harmony to seemingly meaningless design.

There is a world of pattern, and you, as a photographer, have the exciting opportunity to draw attention to the frequently unnoticed wealth of detail around you.

Perhaps the best way to see pattern is to make a simple device to help you to "see." Cut a rectangle out of a piece of cardboard approximately the size of your negative. For 35mm users, a 2 by 3 inch opening works fine.

Use your cardboard window as a viewing mask to isolate patterns

from distracting surroundings. It will help you find yourself zeroing in on meaningful subjects you never knew were there.

Around your home, look closely for patterns in brickwork or shadows on the steps. A row of books or design in the floor tiles will offer picture possibilities. Details in the grille of your car will make interesting photographs, too.

How about a trip to the supermarket? A keen photographer's eye will notice the arrangements of fruits and vegetables in the bins or cans and bottles on the shelf.

**MODERN ARCHITECTURE** (as well as old) offers a multitude of pattern possibilities. Through your photographer's vision, look closely at newly constructed (and under con-

struction) buildings for infinite opportunities for capturing pattern on film.

Be sure to look for the endless number of patterns in nature — a scattering of leaves, bark on a tree or patterns in the sand. Move in close on an individual leaf to capture the intimate and delicate patterns of nature. Or, as demonstrated in the accompanying photo, nature's shadows can form dramatic patterns.

Remember, the aim of creative photography is to make a visual interpretation of an experience, not just to record an image.

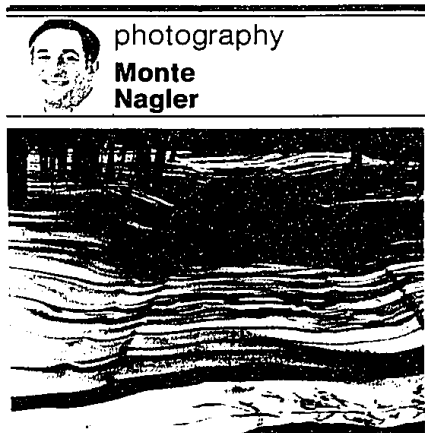
Try to convey through your photographs something that excites and interests you, something you wish to share. With pattern shots, you can do just that.

©1988, Monte Nagler

ows can form dramatic patterns. Remember, the aim of creative photography is to make a visual interpretation of an experience, not just to record an image.

Try to convey through your photographs something that excites and interests you, something you wish to share. With pattern shots, you can do just that.

©1988, Monte Nagler



A dramatic pattern of shadows on snow is captured by Monte Nagler. He included the trees at the top to give his photo a touch of reality.

# Symposium slated for Saturday

Kresge Art Museum of East Lansing will be the scene of a one-day symposium, "After the Crash: Re-evaluating the American Dream" on Saturday. It is being given in conjunction with the exhibition "New Deal: Government Art of the 1930s and 40s."

The symposium, supported by Michigan Council for the Humanities and National Endowment for the Humanities, will examine how American life and values as they existed prior to the stock market crash were re-evaluated during the Depression.

The morning session will be a panel discussion of the economic, political, social and technological history of the period with three Michigan State University professors.

After lunch, Louis Piller, historian will discuss the literature of the 1930s; Brant Pope, chairman

of the Kalamazoo College theater department, will discuss the theater; a film, "The Plow that Broke the Plains," will be shown; and Victor Howard, professor of English, Michigan State, will comment on films of the 1930s.

The symposium is open to the public, pre-registration is recommended, by calling 517-355-7831. Time will be available to see the exhibition which contains works by Robert Rerberg, Detroit artist of the 1930s and 40s, as well as nationally known artists such as Dorothea Lange, Ben Shahn, Stuart Davis, Walker Evans and other Michigan artists such as Henry Bernstein, Leonard Jungwirth and Charles Pollock.

The works on exhibit were created under the "New Deal" program of the Works Progress Administration, the Public Works of Art Project, the

Treasury Department Section of Painting and Sculpture and the Farm Security Administration. Christine Nelson Ruby was the curator.

# Concert will feature music by film composers

The Detroit Contemporary Chamber Ensemble will give a concert, "Music by Famous Film Composers," at 8 p.m. Friday in the Christ Church Cranbrook Guild Hall, Lone Pine and Cranbrook, Bloomfield Hills.

The Ensemble will perform chamber works by leading composers who have earned international reputations for their work in Hollywood film scoring.

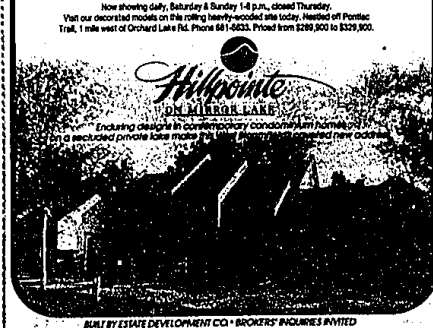
Tickets, available at the door, are \$7 for adults and \$4 for students.

# GRAND OPENING PHASE II

# You can't have everything at Hillpointe of West Bloomfield

- What you can have:**
- Country-quiet location
  - Nature trails, jogging areas
  - Nearby West Bloomfield shops, restaurants, entertainment
  - Charming private lake
  - Complete privacy and security
  - Wood decks facing the lake
  - Walkout basements available
  - Attached 2-car garages
  - Private entry courtyards and atriums
  - Two natural masonry fireplaces
  - Cathedral ceilings and wet bars
  - G.E. kitchen appliances
  - Kohler plumbing fixtures
  - First floor laundry rooms
  - Sound conditioned walls
  - Central air conditioning
  - Energy efficient furnaces
  - Insulation R30 in ceilings, R18 in walls
  - Wood casement windows
  - Wood sliding doors
  - Extra deep basements
  - Security systems
  - Exterior decorative and security lighting
  - Quality wood interior trim
  - Ceramic tile or hardwood foyer floors
  - Ceramic tile baths, sunken tub in master suite
  - Quality wood or Formica cabinets and vanities
  - Marble vanity top, ceramic floor in powder rooms
- What you can't:**
- Clamor
  - Commotion
  - Congestion

**IMMEDIATE OCCUPANCY**



BUILT BY ESTATE DEVELOPMENT CO. - BROKERS' SOURCES INVITED

**Rolling Oaks West**

**6 HOMES** ...available for quick occupancy

"Best Selection in Farmington Hills" Introducing "The Provincial" ...our newest model

Rolling Oaks West is an exclusive neighborhood of 50 custom built homes. Prices from \$248,000

14 Mile Rd. (between 12 and 16 Mile Roads, follow Huntman Drive West to Model)

**MODEL HOURS** Daily 1-6 P.M. (Closed Thurs.)

**MODEL PHONE** 661-6886

Off Drake Road between 12 and 14 Mile Roads, (follow Huntman Drive West to Model)

Developed by: **DAVIDSON DEVELOPMENT CO.** Built by: **DAVIDSON DEVELOPMENT CO.**

**OAKBROOKE**

**BEAUTIFUL HOME SITES FOR SALE!**

Design and build a custom home! Your builder or ours! Birmingham School District

Each home site in Oakbrooke of West Bloomfield is in a "Land Condominium." This feature permits the ownership of a detached home, without the responsibility for such things as lawn care, snow and trash removal; all of which are handled by the Association. The owner also enjoys the use of the private grounds adjoining each house, plus the open space area, and access to Simpson Lake.

The overall architectural theme of Oakbrooke is one of warm elevations to blend as one community. Accents of traditional, contemporary, or tudor styles will allow each purchaser to design their own residence.

Homes Sites from \$95,000.00

**RALPH MANUEL ASSOCIATES • REALTORS**

**851-6900**

An Exclusive Residential Community developed by Kalfan Enterprises, Inc.

**Windemere is more...**

much more than a convalescent home or home for seniors

Windemere is truly a very special place.

Includes exceptional skilled care nursing and medical services while preserving the environmental characteristics of a Human Franchising Organization Residential Community.

There is complete separation between the SKILLED CARE NURSING RESIDENCE on the upper floor and the SUPPORTIVE CARE RESIDENCE on the lower floor. The building location gives both levels direct access to the lavishly landscaped grounds.

Rene Lamy, a caring nursing home professional, and Herman Frankel, a residential developer combined their skills to provide superior nursing and medical services in a residential environment that preserves dignity, beauty, and maintains independence.

WINDEMERE serves the needs of those requiring a state-of-the-art nursing and medical services and WINDEMERE MANOR provides a warm, inviting residential environment with nursing and medical services equally available on an as-needed basis.

Winds cannot describe Windemere. You must see it to appreciate what it offers. Please drop by call 664-1700 for an appointment.

A Skilled Nursing Care and Supporting Residence

14000 West 14 Mile Road, Bloomfield Hills, Michigan 48304

**GUARANTEED LOWEST MORTGAGE**

**MINIMAL COST**

- \$250 TOTAL ORIGATION FEE
- NO DISCOUNT FEES — NO POINTS
- NO HIDDEN FEES

**LOW RATE**

- LOWEST ANNUAL PERCENTAGE RATE ON STANDARD CONVENTIONAL FIXED RATE MORTGAGES

**OUR GUARANTEE**

WE GUARANTEE AT THE TIME OF YOUR LOAN APPLICATION WE WILL OFFER A LOWER ANNUAL PERCENTAGE RATE THAN ANY OTHER METROPOLITAN DETROIT SAVINGS INSTITUTIONS CURRENT PUBLISHED RATE. ALL INTEREST RATES ARE GUARANTEED FOR A 48 DAY CLOSING PERIOD.

**FIRST SECURITY SAVINGS BANK** FSB

FOR SPECIFIC DETAILS, PLEASE CALL ONE OF OUR FOUR AREA LOCATIONS.

**LIVONIA**

37650 PROFESSIONAL CENTRE DR.

**591-6770**

**SOUTHFIELD**

29444 NORTHWESTERN HWY.

**357-2200**

**MT. CLEMENS**

42657 GARFIELD

**263-5600**

**MAIN OFFICE**

1760 TELEGRAPH RD.

**352-7700**

ESLIC

\*\*PROGRAM OFFERED FOR A LIMITED TIME ONLY AND SUBJECT TO LOAN APPROVAL\*\*