



photos by JOHN STORMZAND/staff photographer

Atlantis Division II team members from Warner Middle School are front row, Dawn Sherr, Janine Kehl and Stacey Krause; back row, Terri Wolf, James Haynes, Jon Krause and Brad Hummel.

25 teams represent Farmington at meet on creative thinking

Twenty-five teams of kindergartners through 12th graders will represent Farmington Public Schools in the academic-oriented Odyssey of the Mind Regional Saturday at North Farmington High School.

Many of the teams participated in a dress rehearsal Feb. 6.

O.M. is open to all students in the Farmington Public Schools. St. Fabian Catholic School in Farmington Hills also is participating this year.

Emphasis is on team effort, creative thinking skills and fun competition.

Teams are coached by parents. They consist of five to seven students who choose a problem and develop a solution based on the parameters given by the O.M. Association.

On the day of competition, each team also must solve a spontaneous problem.

Teams that place in the top three slots will go to state competition in April at Central Michigan University.

The best team for each problem will represent Michigan at the National O.M. Competition at the University of Maryland in June.

In nine years, O.M. membership has expanded to 5,000 schools and programs in North America, Australia and other countries.

O.M. started locally in 1982 with eight teams from three schools. Last year, Farmington had 25 teams from 13 schools participating.



Gift of Flight Division I team members from Gill Elementary: front row, Matt Trunk, Danny Gress and Jeff Kotrba; back row, Chad Kotrba, Matt Taylor and Jeremy Sulak.

Tuxedos From \$9.99

President Tuxedo is releasing select new and used formalwear — including items from top designers — to make room for additional inventory. Some sale items are brand new and not from our rental collection. Some were gently worn for just a few hours. Alterations available at reasonable charge.

Used Formalwear

- Designer & Famous-Maker Tuxedos (coat and trousers) \$9.99-\$79.99
- Dinner Jackets \$6.99-\$24.99
- Formal Shirts \$2.99-\$8.99
- Ties, Cummerbunds & Vests \$2.25 and up
- Formal Trousers (black wool) \$19.99
- Formal Shoes \$6.99

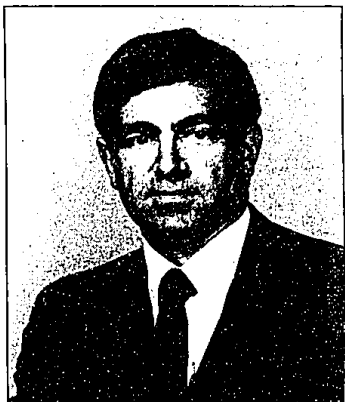
New Formalwear

- Designer Tuxedos from \$89.99
- Dinner Jackets from \$49.99
- Formal Shirts from \$18.99
- Ties & Cummerbunds 25%-50% off
- Cufflink & Stud sets from \$7.95
- Formal Shoes & Hosiery 25%-50% off

FIVE DAYS ONLY! Wed.-Sun., February 24th-28th; 9 a.m. to 9 p.m. daily; Sunday 10 a.m. to 4 p.m. AT OUR WARREN LOCATION ONLY.

Checks Accepted
29212 Hoover Road
North of 12 Mile
Warren 751-0045

president tuxedo
FOR THE SAKE OF APPEARANCES



MEET THE AUTHOR

Autograph session by fitness expert Joe Piscatella
Monday, February 29
4:30 to 6 p.m., Livonia

Welcome news for all who seek good health. Widely acclaimed guides to diet and lifestyle, Choices for a Healthy Heart; Don't Eat Your Heart Out. Workman Publishing Company paperback editions, each 14.95.

Jacobson's

Shop until 9 p.m. on Thursday and Friday
Until 6 p.m. on Monday, Tuesday, Wednesday and Saturday

Mr. Tile Co.

Do-It-Yourself Headquarters

Sale Prices End
March 5, 1988

Armstrong
Solarian Tile
Peel & Stick
Heavy Weight-No Wax

No. 76105/104
12" x 12" **79¢** each

Italian
Glazed Quarry
Floor Tile
8" x 8"

59¢

88-11 88-38

Armstrong
Linoleum

only **\$3.99** Sq. Yd.

No. 63501

USG
CEILING
TILE

39¢

12" x 12" Each No. 4290

4 1/4" Kitchen & Bath
Wall Tile

9¢

All Trim Available Too

Wood Floors

choose from
Anderson

Bruce
Hartco

All On Sale Now!

Professional Advice for Do-It-Yourselfers. Experienced Personnel & Professional Installation Available. Commercial or Residential

Get Your Best Price & Then Call Mr. Tile!

NOVI

Hours and Location:
Novi • 29212 Hoover Road
Mon. - Fri. 9:30 - 5:30
Sat. 9:30 - 5:30

Experienced Full Time
Sales Help Wanted
Apply In Person

348-8850

REDFORD
Telegraph Road
South of W. Chicago
255-0075



SATURDAY
FEBRUARY 27th

30-50% OFF
EVERYTHING

In-Stock Only

FINE FURNITURE & ACCESSORIES

sherwood studios

TELEWELVE MALL • 12 MILE & TELEGRAPH • SOUTHFIELD
DAILY 10-9 • SUNDAY 12-5 • 354-9060