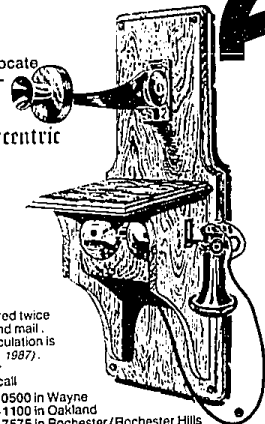


THIS PAGE IS WORTH A RIP (or snip)

The names and numbers listed here will help you locate people and departments in

THE
Observer & Eccentric
NEWSPAPERS

So feel free to clip, snip or rip this page for future reference.



CIRCULATION

Observer & Eccentric Newspapers are delivered twice each week by carrier and mail. Our current audited circulation is 160,959 (September 30, 1987). To begin receiving your Observer or Eccentric call

591-0500 in Wayne
644-1100 in Oakland
651-7575 in Rochester/Rochester Hills
These also are the numbers to call if you experience a problem with delivery. Office hours are from 8:30 a.m. until 5:30 p.m. To become a carrier, call 591-0500 or 644-1100.

FRED WRIGHT IS OUR CIRCULATION DIRECTOR

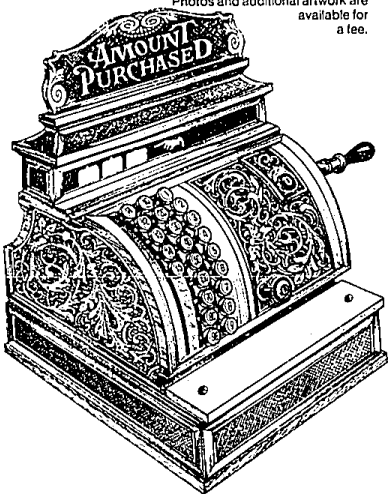
ADVERTISING

There are two basic types of advertisements in The Observer & Eccentric Newspapers:

DISPLAY

These ads are found in the main sections of the paper and are billed at a column-inch rate. We will provide layout, typesetting, and copywriting if you need it, at no additional charge.

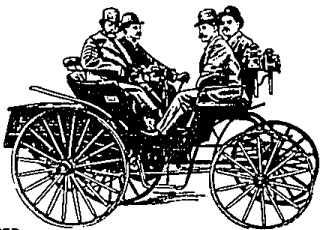
Photos and additional artwork are available for a fee.



Our representatives will be happy to visit your place of business and discuss a marketing strategy with you, along with information pertaining to deadlines, contract rates, research data, and upcoming special supplements. Our display telephones are:

644-1100 in Oakland
591-2300 in Wayne

Monica DiCola heads our Retail Advertising department in Oakland and Mark Lewis is Wayne County Retail Manager.



CLASSIFIED

Our Classified telephone lines are open daily from 8:00 a.m. until 5:30 p.m. Monday through Thursday and from 8:00 a.m. until 5 p.m. Friday. Call:

644-1070 in Oakland
591-0900 in Wayne
852-3222 in Rochester/Rochester Hills

Our computerized classified phone system will route your call to one of our ad takers. We suggest that you jot down what you would like to say before calling and have your Visa or Mastercard ready if you plan to use one of them. Our Classified ads have proven successful for thousands—why not try one soon. Classified ads are also available in display format for Real Estate and Automotive clients. To arrange for a classified display ad call:

644-1100 in Oakland
591-2300 in Wayne

Jack Padley manages our Classified department.

DICK BRADY DIRECTS ALL ADVERTISING AND PROMOTION FOR THE OBSERVER & ECCENTRIC NEWSPAPERS

EDITORIAL

Ever wonder who to call when you have a question or comment about what you've read in your hometown newspaper? Here is an alphabetical list, by city, to make it easy for you:

COMMUNITY EDITORS

BIRMINGHAM Judy Berne 644-1100 ext 248
CANTON Neal Haldane 459-2700
FARMINGTON Bob Sklar 477-5450
GARDEN CITY Leonard Poger 591-2300 ext 307
LIVONIA Emory Daniels 591-2300 ext 311
PLYMOUTH Neal Haldane 459-2700
REDFORD Emory Daniels 591-2300 ext 311
ROCHESTER Tom Baer 651-7575
SOUTHFIELD Sandy Armbuster 644-1100 ext 263
TROY Tom Baer 651-7575
WEST BLOOMFIELD Judy Berne 644-1100 ext 248
WESTLAND Leonard Poger 591-2300 ext 307

SUBURBAN LIFE EDITORS

BIRMINGHAM Becky Haynes 644-1100 ext 264
CANTON Julie Brown 459-2700
FARMINGTON Loraine McClell 477-5450
GARDEN CITY Sue Mason 591-2300 ext 302
LIVONIA Sue Mason 591-2300 ext 302
PLYMOUTH Julie Brown 459-2700
REDFORD Sue Mason 591-2300 ext 302
ROCHESTER Carol Azizian 651-7575
SOUTHFIELD Shirlee Idan 644-1100 ext 265
TROY Carol Azizian 651-7575
WEST BLOOMFIELD Becky Haynes 644-1100 ext 264
WESTLAND Sue Mason 591-2300 ext 302

SPORTS EDITORS

BIRMINGHAM Marty Budner 644-1103 ext 257
CANTON Dan O'Meara 591-2305 ext 339
FARMINGTON Dan O'Meara 591-2305 ext 339
GARDEN CITY Brad Emmons 591-2305 ext 323
LIVONIA Brad Emmons 591-2305 ext 323
PLYMOUTH Dan O'Meara 591-2305 ext 339
REDFORD Brad Emmons 591-2305 ext 323
ROCHESTER Jim Toth 644-1103 ext 244
SOUTHFIELD Marty Budner 644-1103 ext 257
TROY Jim Toth 644-1103 ext 244
WEST BLOOMFIELD Marty Budner 644-1100 ext 257
WESTLAND Brad Emmons 591-2305 ext 323

CREATIVE LIVING EDITORS

OAKLAND COUNTY Co Abatt 644-1100 ext 245
WAYNE COUNTY Marie McGee 591-2300 ext 313

EDITORIALS

OAKLAND COUNTY Rich Perlberg 644-1100 ext 242
WAYNE COUNTY Sue Roskie 591-2300 ext 349

LETTERS TO THE EDITOR

BIRMINGHAM 1225 Bowers, Birmingham, MI 48008
CANTON 489 South Main, Plymouth, MI 48170
FARMINGTON 33203 Grand River, Farmington, MI 48024
GARDEN CITY 36251 Schoolcraft, Livonia, MI 48150
LIVONIA 36251 Schoolcraft, Livonia, MI 48150
PLYMOUTH 489 South Main, Plymouth, MI 48170
REDFORD 36251 Schoolcraft, Livonia, MI 48150
ROCHESTER 410 North Main, Rochester, MI 48063
SOUTHFIELD 1225 Bowers, Birmingham, MI 48008
TROY 410 North Main, Rochester, MI 48063
WEST BLOOMFIELD 1225 Bowers, Birmingham, MI 48008
WESTLAND 36251 Schoolcraft, Livonia, MI 48150

STEVE BARNABY IS MANAGING EDITOR OF
THE OBSERVER & ECCENTRIC NEWSPAPERS

SPORTS

Each community has its own sports editor. To report scores, call the appropriate editor.

OBITUARIES

We publish obituaries of local residents and former local residents. Most obituary information is received from area funeral homes. If a local funeral home is not involved, please call the community editor at the appropriate telephone number. All obituaries appear at the discretion of the community editor. Obituaries are printed without charge.



TASTE 644-1100 Ext. 251

Our food section appears in the Monday paper. Any questions regarding recipes should be directed to Ethel Simmons.



NEWS AND PHOTO TIPS

All news tips should be called to the community editor at the telephone number listed above. If you receive no answer, call 591-2305

STREET SCENE

591-2300 Ext 302

This section, which is written for readers in the 18-35 age range, appears in our Monday paper. It focuses on activities and events throughout Detroit as well as in our 12-community circulation area. For further information, call Sue Mason, 591-2300 Ext 302.

BUSINESS NEWS

591-2300 Ext.325

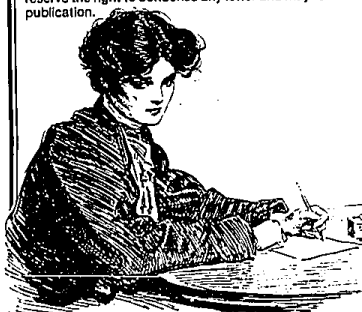
The business section is published Thursdays. In addition to the story coverage and columns, the section contains several calendars: BUSINESS PEOPLE covers promotions, internal awards and retirements for anyone living or working in our circulation area. We will print a photograph if space permits. DATEBOOK covers upcoming meetings and courses of interest to business people.

MARKETPLACE briefly covers new businesses, new products and other business-related items. Submit items for these calendars in writing by 5:00 p.m. Monday. For these calendars, call Barry Jensen (ext. 325) For all other items, call Marilyn Fitchett, 591-2300.



LETTERS TO THE EDITOR

Editorials are published every Thursday. The lead editorial is written by the community editor. Editorials printed below the lead are written by a representative of the editorial department. To reach the community editor, call the number listed. To reach the county editorial staff, call the appropriate number. All letters to the editor must be legibly written and signed. Please restrict letters to 300 words. We reserve the right to condense any letter and may refuse publication.



WEDDINGS, ENGAGEMENTS, ANNIVERSARIES

We publish photographs and announcements of weddings, engagements and major anniversaries of local residents or former local residents. These appear as soon as possible, depending upon available space. Forms for announcing these events are available from any of our local offices, or you may model your announcement on an example you've read in the newspaper. The best reproduction can be made from a 5"x7" black and white photo, but others will do. Please avoid regular or color Polaroid pictures.

PHOTOGRAPHS

Reprints of photographs that appear in the paper are not available. However, if a photograph is used and not needed for our files, it will be made available to the first person calling in. Such photographs will be held in any of our offices for two months, awaiting pickup. To inquire about a photograph, please call the editor who ran the picture, i.e.: Sports, Suburban Life, Entertainment, Creative Living, News.

RELIGION NEWS

Religious news is published Thursdays. The religion calendar is published on these pages. Calendar deadline is Monday noon. All material must be in writing. For more information, call your local suburban life editor

CLUB AND FASHION SHOW NOTICES

Notices of club activities appear in the Thursday SUBURBAN LIFE section. All notices must be written legibly and received by 5 p.m. Monday to be included in Thursday's paper. If you have questions, please call the appropriate Suburban Life editor.

CREATIVE LIVING

News of the arts appears every Thursday. Deadline for notices of gallery shows (which must be legibly written) is 5:00 p.m. Monday. For more information, call the appropriate Creative Living editor.

MOVIE REVIEWS

591-2300 Ext. 302

All questions about movie reviews, which appear every Monday in our STREET SCENE section, should be directed to Sue Mason.

THE
Observer & Eccentric
NEWSPAPERS