

WE'RE HAVING OPEN HOUSE

Everywhere you look...you'll see one of CHAMBERLAIN REALTORS distinctive red, white and black FOR SALE SIGNS...many featuring OPEN HOUSES...just waiting for your arrival. You can't visit all the open houses we feature, but we can help make it easy for you to find the right ones!

CALL OR STOP BY ANY OF OUR OFFICES OR AT OPEN HOUSES FOR A COMPLIMENTARY LISTING OF THIS WEEK'S AREA WIDE OPENS. YOU'LL BE GLAD YOU DID!



OPEN SUNDAY 1-4

3420 Broadway Blvd., Bloomfield
North of Maple/East of Lahser

Ideal home for traditional or contemporary decor. Exposed hard-wood floors, book-cased library, Florida room, private brick courtyard patio, 4 bedrooms, 2½ baths, pleasant kitchen, 2½ car garage. \$329,900 (H-342) 647-6400



OPEN SUNDAY 2-5

1234 Pierce, Birmingham
South of Lincoln/West of Woodward

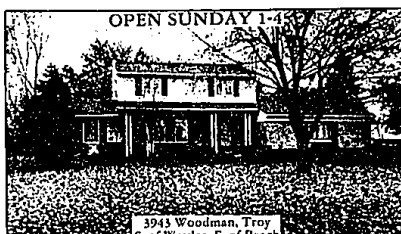
Very desirable bright colonial with all hardwood floors, 4 bedrooms, 1 full and 2 half baths, family room, newer roof, w/omanized deck and fence. Great family neighborhood. \$199,900 (I-25) 557-6700



OPEN SUNDAY 1-4

3779 Baldwin Road
Metamora Lapeer Rd. to Pratt, S. off Pratt

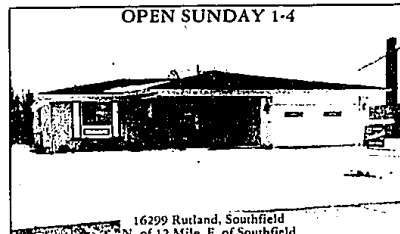
Open floor plan ranch with cedar exterior. Great room with fireplace, 3 bedrooms, 2½ baths, custom kitchen opens to dining area, walk-out basement. Situated on 4 acres. Call for Details. \$145,000 (D-377) 651-4100



OPEN SUNDAY 1-4

3943 Woodman, Troy
S. of Wattles, E. of Beach

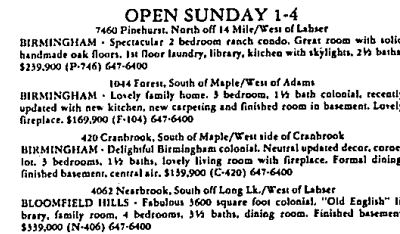
TERRIFIC FAMILY COLONIAL. With first floor master bedroom suite plus 3 bedrooms upstairs. Fireplaced family room, first floor laundry, central air, 3½ baths, basement and 2 car attached garage. AHS Home Warranty. Troy. \$144,900 (W-394) 641-1660



OPEN SUNDAY 1-4

16299 Rutland, Southfield
N. of 12 Mile, E. of Southfield

Quality built 3 bedroom, 1½ bath brick ranch with open floor plan. Natural fireplace in family room, first floor laundry room, 22 x 12 kitchen with doorwall to brick patio and gas barbecue. Full basement and 2 car attached garage. One year home warranty plan offered with sale of home. \$93,900 (R-162) 547-3000



OPEN SUNDAY 1-4

7460 Pinhurst, North off 14 Mile/West of Lahser
BIRMINGHAM - Spectacular 2 bedroom ranch condo. Great room with solid handmade oak floors, 1st floor laundry, kitchen with skylights, 2½ baths. \$239,900 (P-746) 647-6400

1044 Forest, South of Maple/West of Adams
BIRMINGHAM - Lovely family home. 3 bedroom, 1½ bath colonial, recently updated with new kitchen, new carpeting and finished room in basement. Lovely fireplace. \$169,900 (F-104) 647-6400

420 Cranbrook, South of Maple/West side of Cranbrook
BIRMINGHAM - Delightful Birmingham colonial. Neutral updated decor, corner lot, 3 bedrooms, 1½ baths, lovely living room with fireplace. Formal dining, finished basement, central air. \$159,900 (C-420) 647-6400

4062 Nearbrook, South off Long Lk./West of Lahser
BLOOMFIELD HILLS - Fabulous 3600 square foot colonial, "Old English" library, family room, 4 bedrooms, 3½ baths, dining room. Finished basement. \$339,000 (N-406) 647-6400

765 Brookwood Walk, South of Square Lk./West of Eastways
BLOOMFIELD HILLS - Spacious executive colonial on rolling lot, 4 bedrooms, 2 full and 2 half baths. Family room with wet bar, library with fireplace, 3 car drive under garage. \$332,500 (B-765) 647-6400

2747 Aldgate, North of Hickory Gr./East off Woodward
BLOOMFIELD HILLS - Smart 2-story contemporary with decorator updates, 2 full and 2 half baths, 2 fireplaces, deck, balcony, den, dining room, 4 bedrooms. \$167,500 (A-274) 647-6400

3600 Shallowbrook, North of Long Lk./East of Telegraph
BLOOMFIELD HILLS - Ranch boasts 3 bedrooms, 2 full baths, family room and updated kitchen. Screened porch overlooks lovely private yard. 2 car garage, extra storage. \$129,500 (S-360) 647-6400

4416 Seminole, South of 14 Mile/East of Greenfield
BEVERLY HILLS/ROYAL OAK - Fabulous 3 bedroom, 1 bath brick ranch, 2 car garage with door opener, tree-lined street, close to amenities. \$110,000 (S-441) 647-6400

528 Park, North of Maple/West of Hunter
BIRMINGHAM - In-Town condo alternative. Featuring 3 bedrooms, 2 full baths, family room with fireplace, updated kitchen. Central air, 3 doorways leading to professionally landscaped yard. \$159,900 (P-528) 647-6400

8660 Hendrie, South of Lincoln, West of Woodward
HUNTINGTON WOODS - Stately Custom built Colonial with over 3,400 sq. ft. Includes family room, library, finished rec room, 4 bedrooms, 3½ baths, central air and attached garage. \$255,000 (H-866) 547-2000

15993 Blwood, South of 14 Mile/West off Greenfield
BEVERLY HILLS - Delightful updated 3 bedroom brick/Aluminum ranch. 1½ baths, fireplace living room, 1st floor laundry, gas forced air heat. Attached garage, Birmingham schools. \$89,900 (B-155) 647-6400

31283 Downing Place, West of Southfield/North of 13 Mile
BEVERLY HILLS - Spacious quad-level, brick/Aluminum, 2½ baths, 3 bedrooms - ideal in-law suite with private entry. Family room, finished rec room, Birmingham schools, 1 year protection plan. \$157,500 (D-312) 647-6400

29933 Rosemond, North of Northwester/East of Inkster
SOUTHFIELD - Gorgeous ranch, fantastic location! 3 bedrooms, 2½ baths, super kitchen, full basement. Recently redecorated with contemporary flair. Central air, 2 car garage. \$147,900 (R-299) 647-6400

4178 Ramsey Rd., North of Seymour Lk. Rd./West of Sashabaw
BRANDON TWP. - Custom Weinberger ranch. Attractive 4 bedroom, 3½ bath home set on over 3 acres. Has 2 fireplaces and finished basement with wet bar and ½ bath. Country atmosphere, but minutes from town. \$123,500 (R-417) 647-6400

19010 Albany, South of 9 Mile/East of Evergreen
SOUTHFIELD - Well landscaped, treed lot enhances this well built ranch. 3 bedrooms, family room with cur fireplace, tiled basement, 2 car attached garage plus carport. Call today. (A-199) \$54,900 557-6700

28853 Lincolnview, South of 12 Mile/East of Middlebelt
FARMINGTON HILLS - Custom pillared colonial with first floor laundry, formal dining room, family room with fireplace, 4 bedrooms (all with walk-in closets), 400 sq. ft. rec room with wet bar. Sprinkler system, all carpeting and verticals installed 1987. Excellent area. 2422 sq. ft., built 1976. Priced on the money. (L-288) \$145,000 557-6700

4296 Wentworth, North of Wattles/East of Adams
TROY - Energy efficient 4 bedroom Colonial, solar panels, country kitchen, central air rec room, pool with whirlpool and solar cover, more. \$169,900 (W-429) 557-6700

26319 Dundee, North of 10 Mile/West of Woodward
HUNTINGTON WOODS - Classic 1927 home great for entertaining with living room, sunroom, Florida room and deck that flow together. Formal dining room, 3 bedrooms, unique log cabin rec room. \$128,000 (D-263) 557-6700

3696 Summit Ridge, North of Tienken/West of Adams
ROCHESTER HILLS - Contemporary great room colonial in prestigious area. Four bedrooms, formal dining room, den and bright sunny kitchen. Loads of storage space throughout. Huge, fully excavated basement. (SR-3696) \$273,500 651-3330

3097 Kilburn, North of Tienken/West of Adams
ROCHESTER HILLS - Executive home with walk-out basement, 2 decks, great floor plan. Wet bar and garden fireplace in family room, 2½ ceramic baths, security system and much more! Call for all the details. (K-3097) \$264,900 651-3330

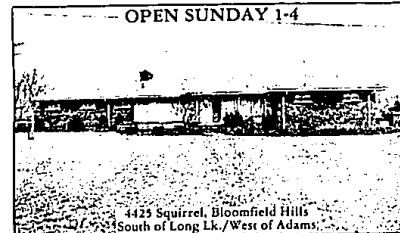
4671 Forest, North of M-99/East of Green Lake
WATERFORD - Super sharp updated ranch with coal fireplace on Watkins Lake. Features include 2 bedrooms, family room with fireplace, basement and garage.



OPEN SUNDAY 2-5

7202 Indian Creek, W. Bloomfield
North of 14 Mile/West of Drake

PRICE REDUCED - Transferred owner must sell this sharp contemporary 3 bedroom home with 3½ baths, great room with fireplace, 1st floor laundry and attached garage on a beautiful lot backing to a wooded ravine. \$149,900 (I-720) 851-4400



OPEN SUNDAY 1-4

4425 Squirrel, Bloomfield Hills
South of Long Lk./West of Adams

Outstanding brick ranch on almost 2 acres. Exceptional quality includes 3 bedrooms, 3½ baths, family room, library, full finished lower level. Oversized 2½ car attached garage. \$259,900 (S-442) 647-6400



OPEN SUNDAY 1-4

1922 Maple Ridge
S. of Avon, W. of Adams

Immediate Occupancy on this prestigious Colonial features 4 bedrooms, 2½ baths, family room with fireplace, spacious kitchen with breakfast area, formal dining room, 1st floor laundry, more. \$264,900 (M-192) 651-4100



OPEN SUNDAY 1-4

2465 Wattles
S. of Wattles, E. of Beach

BEAUTIFUL TRI-level. Four bedrooms, den, 2½ baths, fireplaced family room and outstanding cherrywood cabinetry in kitchen. Central air, automatic garage door opener, AHS warranty program. \$139,900 (W-246) 641-1660



OPEN SUNDAY 1-4

4257 Highland, West Bloomfield
South of Richardson, E. of Haggerty

Land Contract Terms are offered on this sharp tastefully decorated ranch with 4 bedrooms, 1½ baths, fireplace, finished rec room with wet bar and attached garage. \$99,600 (H-425) 851-4400



OPEN SUNDAY 1-4

28090 S. Harwich, Farmington Hills
N. of 12 Mile, E. of Middlebelt

Prestigious Woodcreek Hills Sub., 3 bedrooms, 2½ baths, tastefully decorated brick colonial. Slave foyer, family room with corner fireplace, library, central air, new furnace, prime lot. \$239,900 (HS-280) 557-6700

SOUTHFIELD/LATHRUP 557-6700

ROYAL OAK 517-2000

BIRMINGHAM 641-6400

Chamberlain
REALTORS
Serving the area's finest communities since 1988

WEST BLOOMFIELD 851-4400

ROCHESTER 651-4100

BLOOMFIELD 641-6788

TROY 641-1660

