

'This is very difficult for the family'

Continued from Page 1

the search effort, Erickson added. But midweek temperatures dropped below freezing, which could cause other problems.

"We're doing everything we can," Erickson said. "We try and make every attempt. This is very difficult for the family."

Friends say family members, who live in the Colony Park subdivision near 13 Mile and Farmington Road, remained up north over the weekend, awaiting word about Chris.

His brother, Benjamin, and his parents, Jim and Carol Reinke, continue to await word from Upper

Peninsula police officials.

Greil remembers Reinke as a young man who enjoys fishing, hunting and loves to watch the Detroit Red Wings. "He liked to have a good time — he treated his friends well. He had a lot of good friends."

Bowman has similar memories. He spent many hours bow hunting with Reinke during the two years of their friendship. "He was a great guy," he said. "He loved the outdoors. . . . We did a lot of that."

"He was really good in school — he was really bright."

NORTH FARMINGTON principal Don Cowan said he was acquainted

'He liked to have a good time — he treated his friends well. He had a lot of good friends.'

— Dennis Greil, outling companion

with the young man from his high school days, and said "he loved baseball."

Reinke played junior varsity baseball during his sophomore year and varsity baseball his senior year for

the Farmington Hills high school.

Although not a starter, Reinke liked being part of the team and was "a heck of a hitter," according to North Farmington baseball coach Irv Horwitz. "He took it quite seriously."

Horwitz called Reinke a "natural talent," and the "team comedian who gave his best."

"You never knew what he would come up with next," he added. "The kids really liked him."

Horwitz contacted Reinke's former teammates and their families this week to tell them of the acci-

dent. "They are quite shocked. They'll miss him," he added.

TAHUQUAMENON STATE Park is open year round, and is west of the town of Paradise, about one hour north of the Mackinac Bridge. It is about 50 miles from Lake Superior State. The falls draw some 400,000 visitors each year.

Friday's incident was the first in 13 years, according to park manager Wayne Sulda, who has held his post for 12 years. It's the first incident since protective fencing was installed.

"We feel under normal circum-

stances, it's very safe. We have the visitor protected," Sulda said.

There are three signs in the accident area that warn visitors against going beyond the fence. "We feel we give adequate warning," he added.

The Lake Superior State students were the only ones in the park at the time of the accident, so the park was not closed down, Sulda said.

The outing was a social one, and not sponsored by the college, according to the college's acting director of public information, Sue Harrison.

Chris' father, Jim Reinke, said a memorial service is planned for his son, but a date has not been set.

Sidewalk cut from paving plan

Continued from Page 1

been bought by the city and are expected to be relocated along Drake.

THE NEW pavement will follow the existing gravel road except at the sharp curve north of Knights Drive and south of J-596. There, a new road will be cut east of the existing road to avoid removing houses.

The new pavement will include a passing lane at Howard Road. The lane will be designed to accommodate left turns rather than allowing cars to pass each other on the winding road.

Despite more than a year of working together with the Drake Road Citizens Committee, city staff came

under fire. Some residents told council they made many concessions on the road's design, which they maintain is not the design they originally chose.

But Ed Krol, committee chairman, who disagreed with the radius of a curve near Howard, later said he felt the final plans are good.

"The plan is not drastically different," he said. "We will monitor the project to ensure the environment. If there's anything out of order, we'll be back to the city."

Residents complained about a change in the radius of the curve at Howard Road and for being assessed a share of the \$1.3 million project.

Originally, engineering consultants Hubbell, Roth & Clark, Inc., Bloomfield Hills, thought the hill at

Howard Road could be cut into to accommodate the road's new alignment. But it was later determined that it would cost \$450,000. The new plans call for moving the new alignment 15 feet east, which will improve sight distance and avoid increased costs, said Tom Blasell, public services director.

"IT WASN'T my intent to pick on city staff. I was just faulting the city," Krol said following the meeting Monday, when many residents blamed city staff for the change.

Defending the engineers, city administrators and the mayor said the cost of the retaining wall for the hill couldn't have been accurately estimated until a design plan was drawn

from the design concept. "There's indeed some difference between concept and design," Soronen said.

Residents also blamed the city staff for not fully informing them that property owners fronting on Drake will be assessed a share of the improvement costs. Of the total \$1.3 million project costs, residents will pay \$72,000, or 5.4 percent of the total.

"I do have a problem with that assessment," said a Drake Road resident, who she said was told by city employees that she would not be assessed for the paving. "I don't agree with being assessed, period."

Administrators and council members attempted to set the record straight. "They cannot have been told that. Our policy has never been anything else," Soronen said, referring to city policy requiring special assessments for road improvements.

Residents along other major roads, such as Halsted and 13 Mile, have been assessed for improvements, including paving.

Detectives' task force prepared against rape

Continued from Page 1

The rapists appear to stalk victims, studying their habits and lying in wait until they're alone at night — and vulnerable. Victims have ranged in age from 13 to 53.

THE TASK force would replace a voluntary task force of detectives that meets weekly in Bloomfield Township to share leads and evaluate strategy.

Friday police chiefs from Farmington Hills, Bloomfield Township, Birmingham and West Bloomfield met with Oakland County Sheriff John Nichols and Michigan State Police Inspector Michael Swope at Thompson's office.

The meeting was prompted by a State Police offer to provide man-

power and resources for the serial rape investigation.

The task force would be under the command of the State Police and would answer to a board of directors consisting of the police chiefs, the sheriff and the prosecutor's office. The State Police would provide a commander, an assistant commander and two employees to record and manage tips. The State Police is already computerizing tips.

The task force would remain in effect until arrests were made or tips had dried up.

Rewards for tips leading to an arrest and conviction total \$10,000. Tips can be called in to the Farmington Hills Police Department: 473-9695.

Safety urged with power mowers

The smell of fresh-cut grass is one of spring's simple pleasures. And it can stay a pleasure by playing it safe when power mowers are used to cut the lawn.

"The power mower can become a lethal weapon," says Dr. Larry Sell, senior vice president for Health Care Affairs at Blue Cross and Blue Shield of Michigan.

Thousands of adults and children are treated each year in hospital emergency rooms for injuries associated with power mowers, says Sell, who specializes in emergency medicine.

"Use a power mower only if the lawn is dry and thoroughly raked, keep yourself and others away from the blades and discharge chute while the machine is on, wear the right clothes, and turn off the mower before trying to unclog or refuel it," he said.

"Eye injuries are common with power mowing because wire, rocks and twigs left on the lawn will shoot out through the disc at 40 mph or from under the shoe-

ing. That's why it's important to rake or inspect the lawn thoroughly before you mow."

Unfortunately, the most frequent victims are small children playing in the area. Never let young children operate the machine and keep them away from the area you're mowing, he said.

"Don't mow a wet lawn. The wet clippings easily clog it up or you could slip into the machine."

"Even on dry lawns, the mower may clog. If it does, play it safe," he said. "Turn it off and wait at least a half-minute to be sure the blades have stopped before trying to unclog it."

Close-fitting clothes should be worn because they won't get tangled in the mower, he said. "It's also important to wear sturdy, rough-soled shoes. They'll help keep you from slipping and protect you if you should accidentally pull the machine back over your feet."

"To prevent burns, always turn off the machine and wait until the engine cools before refueling."

● Your hometown voice ● Your hometown voice ● Your hometown

Spring Specials

Prices are dropping on everything for our Annual Spring Specials
If it's time to buy something, it's time to save some money
DISCOUNTS ON DRAPERIES - FURNITURE - CARPETING - ACCESSORIES

421-6900

Baker Street Interiors, Ltd.

16320 Middlebell Division, #3 48152

BETWEEN FIVE & SIX MILE ROAD

M - TH - F - (10 - 8PM) TU - W - SA - (10 - 6PM)

HOME SWEET HOME



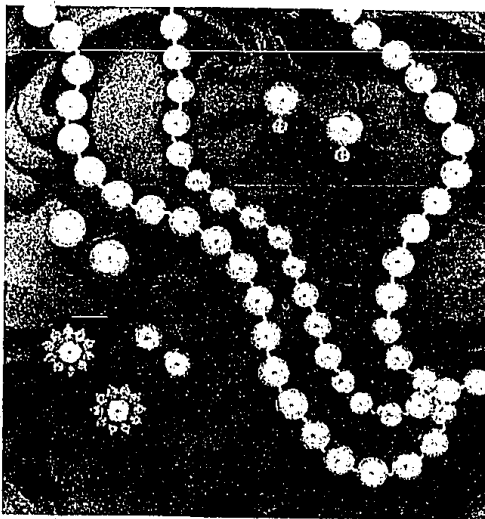
on Nine Mile, just 610 feet East of Novi Road
43180 Nine Mile Road • Novi, MI • 48050 • 347-0095

"Let's Do Lunch"

beginning APRIL 20th
11am thru 3pm
Tuesday thru Friday

Perfect Romance

Greenstone's specializes in the expert design and stringing of custom pearl jewelry — featuring an outstanding collection of Mabe and luxurious South Seas pearl creations. We carry all lengths and styles of beautifully finished necklaces as well as a wide variety of bracelets, enhancers and clasps. Pictured items from \$90.



GREENSTONE'S
CREATORS OF FINE JEWELRY

528 N. Woodward, Birmingham 4 blocks north of Maple 642-2650 Mon.-Sat. 9:30 to 5:30