

exhibitions

CANTOR/LEMBERG GALLERY

Works by Harold Allen, Todd Erickson, Clifford Myers and Bernard Venet are on display along with Frank Stella's series "From Moby Dick." These are six hand-colored, collaged images with lithographic, silkscreen and linocut relief printings, each an edition of 60. Hours are 11 a.m. to 5:30 p.m. Tuesday-Saturday, 535 N. Woodward, Birmingham.

BIRMINGHAM CAMERA

Photographs by the celebrity photographer, Linda Solomon, are on

display through July 15 at both the Birmingham and Rochester stores. Open free of charge during regular business hours, 168 S. Woodward, Birmingham, 301 S. Livernois, Rochester.

D & J BITTKER GALLERY LTD.

In addition to antique Chinese furniture, the gallery collection includes ceramics, sculpture, prints and paintings. Hours are 11 a.m. to 5:30 p.m. Tuesday-Saturday, 535 N. Woodward, Birmingham.

TOWN CENTER GALLERY

Limited editions by Southwestern artist, R.C. Gorman, and new works by gallery regulars, Rizzi, Cerj and Fekete. Hours are noon to 5 p.m. Monday and 11 a.m. to 5 p.m. Tuesday-Friday, 3000 Town Center, Suite 45, Southfield.

LA MINOTAURE

Changing exhibits by gallery artists during the summer — Dubuffet, Lindstrom, Matta, Vasarely, Assa-dour, Leija, Lacotte, Pautz and others. Hours are 10 a.m. to 4 p.m. Wednesday, Friday, Saturday, 11 a.m. to 7 p.m. Thursday, 115 East Ann, Ann Arbor.

SUSANNE HILBERRY GALLERY

Paintings and watercolors by Sybil Oshinsky of Birmingham. Continues through July. Hours are 11 a.m. to 5 p.m. Tuesday-Saturday, 555 S. Woodward, Birmingham.

FEIGENSON/PRESTON GALLERY

New sculpture by Tom Bills, former Detroit now living in New York, is the first show by this gallery in its new location. Mary Preston is carrying on a fine tradition begun with the late Jacqueline Feigenson. Continues through July. Hours are 11 a.m. to 5 p.m. Tuesday-Saturday, 796 N. Woodward, Birmingham.

HALSTED GALLERY

"From and Intimate but Beautiful Images" from the Currier Collection will be on exhibit through July. It contains more than 300 carte de visites and cabinet cards 1850-1890. Open by appointment, 644-8284, 560 N. Woodward, Birmingham.

DETROIT FOCUS

"From Artists Studios/Current Work" features works by Andrea Eis, Stephanie Sarris and Carol Schramm, painting, drawing, et al. specific installation and film. There will be an evening of Andrea Eis films at 7:30 p.m. July 29, at the gallery. Regular summer hours are 11 a.m. to 5 p.m. Wednesday-Saturday, 743 Beaubien, Detroit.

TROY ART GALLERY

Exhibit of mixed-media works by Brenda Cohen, Pat Boyer, Dee Koot, Carol Lachiusa and Japanese and western prints continues through July. Hours are 11 a.m. to 5:30 p.m. Tuesday-Friday. Closed Saturdays in July, 755 W. Big Beaver, Suite 131, Troy.

BELIAN ART CENTER

"Immortals of Antiquity" by Reuben Nakian continues to July 17, 5989 Rochester Road, Troy.

GALLERY 22

Group show features soft, abstract watercolors by Jim Othoff, bold monographs by Isabel Field and figurative serigraphs by Don Hatfield through July 16. Hours are 9:30 a.m. to 6 p.m. Monday-Friday, until 9 p.m. Thursday and until 5 p.m. Saturday, 22 E. Long Lake (just east of Woodward), Bloomfield Hills.

PRESTON BURKE GALLERIES

Annual summer group show features works by the artists which the gallery represents. Includes paintings, prints, sculpture and a section of antique engravings of Detroit. Continues through the summer. Hours are 9 a.m. to 5 p.m. Monday-Friday and by appointment, 240 East Grand River, Detroit.

ROBERT L. KIDD GALLERY

New paintings by Aviva Robinson and new sculpture "Beaded Beasts" by Jerome Kamrowski, continue on display through July 9. Hours are 10:30 a.m. to 5:30 p.m. Tuesday-Saturday, 107 Townsend, Birmingham.

SHELDON ROSS GALLERY

Drawings and lithographs by John Carroll, American artist. Exhibit continues through July 9. The artist played an important role in the Detroit art scene in the 1930s and 40s. Gallery hours are 11 a.m. to 5 p.m. Tuesday-Saturday, 250 Martin, Birmingham.

YUGO ART

New gallery specializing in art from Yugoslavia will have Eastern

Orthodox icons, landscapes and lithographs. Hours are 9 a.m. to 1 p.m. Monday-Friday, 114 S. Woodward (second floor), Birmingham.

DETROIT INSTITUTE OF ARTS

"In/On/Of Paper," third exhibit in the Ongoing Michigan Artists Program, OMAP, continues through Sept. 4. Among the 10 outstanding artists are Jean Hellbrunn of Farmington Hills and Nancy Thayer of LaMar Village. Hours are 9:30 a.m. to 5:30 p.m. Tuesday-Sunday. The OMAP gallery is near the Farmworth entrance, 5200 Woodward, Detroit.

MESA ARTS

"Spirits of the Southwest" includes fetish figures in a variety of media and Hopi and Navaho kachina doll

carvings — all part of the religious and spiritual life of the American Indian, 32800 Franklin Road, Franklin.

PONTIAC ART CENTER

Art by three Pontiac studio artists, Richard Brooks, painter, William McKee, sculptor, and David Griffith, photographer, are on display through July 22. Gallery talk 11 a.m. June 25, 47 Williams, Pontiac.

CRANBROOK ACADEMY OF ART MUSEUM

Student summer show of works by 50 recent graduates continues through Sept. 18. Roy Slade, president of the academy, chose the works from each of the nine departments. Hours are 1-6 p.m. Tuesday-Sunday, 500 Lone Pine, Bloomfield Hills.



condo queries

Robert M. Melsner

Q. We are having a problem with one of our employees who believes that she is being discriminated against on the basis of her marital status and age. She is the assistant bookkeeper at our condominium and is upset with having to take orders from the head manager.

A. Condominium associations are susceptible to the same obligations and responsibilities as any other corporation in Michigan. The Elliott-Larsen Civil Rights Act provides for certain protections in regard to employees, particularly on the bases of race, age, marital status, etc. . . . You are well advised to check with your association attorney to ascertain whether he has the expertise to deal with employment law issues.

There are obviously things that you must do to ensure that there is no discriminatory practice toward employees, and you should not in any way retaliate against an employee because he has threatened to or, in fact, has filed a Civil Rights complaint. That, in itself, is a violation of the Civil Rights Act.

This is a serious potential problem that could result in extraordinary li-

ability of the association.

Q. I have been the president of a 14-member condominium project for approximately two years. When I got on the board I was well liked. Now I feel like an outcast. Is this an unusual feeling based on your experience, and what can I do about it?

A. Unfortunately, people who become members of the board, even if they are acting in good faith and prudently in behalf of the members of the association, sometimes become extraordinarily frustrated at the lack of appreciation and/or acceptance by certain members of the association of their efforts.

True, if the board is imprudent, autocratic and negligent, the members of the association should act accordingly with board members, including seeking their removal.

On the other hand, anyone who becomes a member of the board of directors should be cognizant of the thankless job that they, many times, will inherit and should not expect accolades from their members.

Voluntary governance in the context of the condominium is still the subject matter of analysis as to its worthiness.

...in the CHARTER TOWNSHIP OF CANTON

Arbor Village Condominium was built to provide practical living for many different lifestyles. Each residence is provided with a covered carport for your convenience.

features include:

- full basement
- ceramic tile baths
- skylights
- dishwasher, refrigerator, range

central air
fully carpeted
fireplace (optional)
1st floor laundry hook-up (optional)

Priced from \$69,900

MODEL HOURS: Daily & Sunday 10-6 P.M.
MODEL PHONE: 397-8080

Ranch* and Townhouse Styles

A PALMER SHELTON DEVELOPMENT
Built by: S.R. JOHNSTON CO.

Merrill Lynch Realty



OPEN SUN. 2-5, 30579 Country Ridge Circle, W. of Halsted, S. of 14 Mile. Sensational Custom built Tudor in FARMINGTON HILLS has 4 bedrooms, 2 1/2 baths, 3 fireplaces, 2 wet bars, garden room, media room, library, deck, patio and finished walk-out basement. \$335,900 626-9100 2-B-0556



OPEN SUN. 2-5, 3420 Broadway Blvd., N. of Maple, E. of Lahar. Quality built BIRMINGHAM Colonial features hardwood floors, slate hearth fireplace, built-in, den, rec room, 4 bedrooms, 2 1/2 baths and professional landscaping. \$299,900 626-9100 2-A-0306



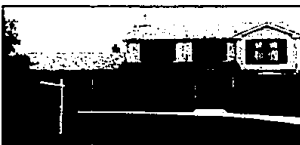
OPEN SUN. 2-5, 30533 Country Ridge Circle, S. of 14 Mile, W. of Halsted. FARMINGTON HILLS Traditional is outstanding with family room, fireplace, private library, 4 bedrooms, 2 1/2 baths, skylights, finished lower level walk-out and treed yard. \$298,900 626-9100 2-B-0841



OPEN SUN. 2-5, 35440 East Lyman, S. of 12 Mile, E. of Drake. FARMINGTON HILLS Tudor is extra special with 5 bedrooms, 2 1/2 baths, formal dining, finished basement with wet bar and sauna, family room, fireplace, central air, porch, patio and 3 car garage. \$229,900 626-9100 2-B-1138



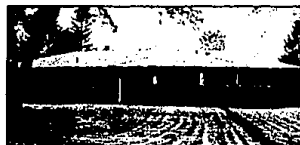
OPEN SAT. & SUN. 2-5, 7107 Westbury, N. of 14 Mile, W. of Halsted. Fantastic Contemporary in WEST BLOOMFIELD offers vaulted great room, 3 bedrooms, 2 baths, hot tub, loft, deck plus all the extras including built-in sound system! \$183,900 648-5000 1-B-0917



OPEN SUN. 2-5, 30559 Congress, W. of 11 Mile, W. of Drake. Well maintained FARMINGTON HILLS Colonial has 4 bedrooms, 2 1/2 baths, beamend family room, fireplace, library, formal dining, central air, 1st floor laundry and deck. \$178,900 626-9100 2-B-1107



OPEN SUN. 2-5, 50361 Castleford Court, N. of 13 Mile, W. of Halsted. Beautifully upgraded Colonial in FARMINGTON HILLS features 4 bedrooms, 2 1/2 baths, 2 story foyer, neutral decor, built-in, 3 bedrooms, 2 1/2 baths, library, fireplace, central air and deck. \$157,900 626-9100 2-B-1103



OPEN SUN. 2-5, 4714 Ranch Lane, N. of Lone Pine, E. of Telegraph. BLOOMFIELD TOWNSHIP, 4 bedroom Ranch has great location and offers open floor plan, library, family room, fireplace, formal dining, 2 bedrooms, central air and patio. \$156,000 626-9100 2-A-0976



OPEN SUN. 2-5, 1729 Fleetwood, S. of Sq. Lake, E. of Coolidge. Professionally landscaped and decorated, this TROY Colonial offers neutral carpet, spacious family room with fireplace, 4 bedrooms, 2 1/2 baths, Florida room, formal dining room and more! \$118,900 626-9100 2-A-1163



OPEN SAT. & SUN. 2-5, 96781 Tanglemore Ln., S. side of 14 Mile between Drake & Halsted. Contemporary Townhouse features 3 bedrooms, 2 1/2 baths, great room, formal dining, library, fireplace, skylights and loft. \$204,900 478-5000 7-B-0419



OPEN SUN. 1-4, 21215 Woodfern, N. of 8 Mile, W. of Halsted. FARMINGTON HILLS T-1-Level with neutral decor, remodeled kitchen, 4 bedrooms, 3 baths, formal dining, family room, fireplace and finished walk-out. \$199,900 478-5000 7-B-1159



OPEN SUN. 1-4, 21249 Summerlake, N. of 8 Mile, E. of Beck. Exceptional 4 bedroom Colonial in NORTHVILLE features family room, fireplace, formal dining, 2 1/2 baths, large country kitchen, finished basement, and patio. Large treed lot. \$179,900 478-5000 7-B-1031



OPEN SUN. 1-4, 718 Lutzaker, S. of N. Territorial, W. of Sheldon. Well maintained Quad-Level in PLYMOUTH offers great room, library, family room, fireplace, 4 bedrooms, 2 baths, hardwood floors, central air, patio and multi-level decking. \$135,900 478-5000 7-C-1006



OPEN SUN. 2-6, 25296 Arden Park, N. of 10 Mile, E. of Middlebelt. Enjoy the park-like setting of this quality built FARMINGTON HILLS Ranch with slate foyer, built-in, formal dining, 3 bedrooms, 2 baths, family room, fireplace, 1st floor laundry and central air. \$134,900 478-5000 7-B-1234



OPEN SUN. 1-4, 26332 La Shue, N. of 11 Mile, W. of Middlebelt. FARMINGTON HILLS Ranch features large beautiful lot, 2 bedrooms, great room, 3 bedrooms, 1 1/2 baths, patio, deck, inground pool and fenced yard. Many updates. \$114,900 478-5000 7-B-0784



OPEN SUN. 2-6, 31701 Thirven Mills, South side of 13 Mile, W. of Orchard Lake. FARMINGTON HILLS T-1-Level is immaculate with 3 bedrooms, 2 baths, family room, rec room, fireplace, cathedral ceiling, updates, central air and patio. \$124,900 478-5000 7-B-1148

Birmingham/Bloomfield

1126 N. Woodward
and Long Lake
646-6000

Merrill Lynch Realty

U.S.A.

West Bloomfield

3116 Orchard Lake Rd.
at Long Point
851-8100



Franklin/Farmington

626-9100

Novi/Northville

478-5000

Tracy

689-8900

Rochester

651-8850



Real Estate Office Open Monday-Friday 9 a.m. - 9 p.m. SATURDAY 9 a.m. - 5 p.m. OPEN SUNDAYS