

**"10 NEW LISTINGS FOR FIRST TIME VIEWING"****SOPHISTICATED BABY!**

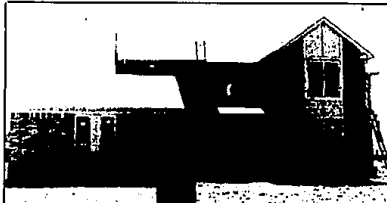
Silvered mirrors, custom lighting, soft neutrals, wood shutters are but a few of the amenities in this 3 bedroom Townhouse. Features formal dining room, 1st floor library, 1st floor laundry, deck with hot tub in a very private setting. \$269,000 RID-31892

**TOTALLY REDONE 5 BEDROOM COLONIAL**

New kitchen offers Jennaire and microwave, new deck, new baths, parquet floors, acqua-glass whirlpool in master bedroom baths, walk-out finished rec. room, Florida room, 3 1/2 baths and Bloomfield Hills Schools. \$305,000. LOE-32441

**NEW CONSTRUCTION - READY FOR FALL**

Features all of the amenities of the 90's. Dramatic, spacious island kitchen, ceramic entry, mirrored doors, master bedroom suite has jacuzzi, dressing area and 2 walk-in closets. Time to make your selections. \$289,000. HUN-32274

**CONTEMPORARY HOME**

Builder's spec ready for July occupancy. Features Great room with vaulted ceiling, fashion bath with double sinks, shower and tub. Three bedrooms, 2 1/2 baths, Great room and library. Interior trim stained to match cabinets. \$187,900. BLM-32058



## RALPH MANUEL

ASSOCIATES • REALTORS

647-7100

1821 W. Maple  
Birmingham -  
Bloomfield

851-6900

32961 Middlebelt  
Farmington Hills -  
West Bloomfield

656-8900

445 S. Livernois  
Rochester Hills -  
Sterling Heights

647-5500

900 S. Adams  
Birmingham -  
Troy

**Relocation 1-800-R-MANUEL**

- MEMBER OF EMPLOYEE RELOCATION COUNCIL •
- MEMBER OF ASSOCIATES RELOCATION SERVICE •

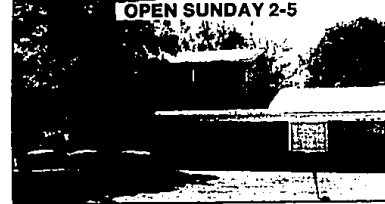
IF YOU ARE MOVING ACROSS THE CITY OR ACROSS THE COUNTRY, OUR RELOCATION DEPARTMENT CAN MAKE YOUR MOVE SMOOTHER.

**ROCHESTER HILLS**

Great room ranch with separate family room. Full wall of windows overlooking a beautiful 100 x 251 lot. This sharp home has 3 bedrooms, 2 full baths, 2 fireplaces and new kitchen appliances included. \$116,900. 54-TEX

**BIRMINGHAM SCHOOLS**

Smashing 1981 energy saver contemporary with Walnut Lake privileges, 3 bedrooms, 1 1/2 baths, Great room, ceramic foyer and kitchen. Neutral decor can be adapted to any lifestyle. Kitchen and laundry appliances included. \$129,900. EAN

**OPEN SUNDAY 2-5****SMASHING CONTEMPORARY**

Transferred owners just finished redecorating this lovely 4 bedroom Colonial. Excellent condition, great curb appeal, finished basement and additional insulation. \$144,900. 6664 Pine Eagle, S. of Maple and W. of Middlebelt.

**BIRMINGHAM SCHOOLS**

Smashing 1981 energy saver contemporary with Walnut Lake privileges, 3 bedrooms, 1 1/2 baths, Great room, ceramic foyer and kitchen. Neutral decor can be adapted to any lifestyle. Kitchen and laundry appliances included. \$129,900. EAN

**OPEN SUNDAY 2-5****CHARMING UPDATED RANCH**

Move right into this lovely 3 bedroom home. Super finished basement, living room, dining room, Florida room, fireplace, 2 1/2 car garage and magnificent landscaping. \$133,900. 16193 Locherbia, S. of 14 Mile & E. of Pierce.

**"OPEN HOUSE EXTRAVAGANZA"**

**OPEN SUNDAY 2-5**

**ROCHESTER HILLS**

Open feeling to this upgraded starter home. Tastefully decorated, sprinklers, move-in condition. \$105,000. 741 Dressler Lane, N. of Hamlin and E. of Livernois.

**BLOOMFIELD HILLS**

Country French Colonial offering elegant circular staircase, parquet floor under carpet in family room, some hardwood floors in bedrooms, neutral decor. \$287,970. 2828 Severn Lane, N. of Lone Lake and W. off Eastways.

**BIRMINGHAM**

Charming Poppleton Park home with hardwood floors, beveled glass, updated kitchen and great master bedroom suite. \$196,000. 860 Ridgedale, N. of Maple and W. of Adams.

**SOUTHFIELD**

Lovely 2 bedroom ranch Condo with clubhouse, swimming pool and 2 tennis courts - great supportive community. Lots of storage, 1st floor laundry and tread patio. \$98,900. 26230 Inkster, S. of 11 Mile and E. of Inkster

**BIRMINGHAM**

Spacious in-town charmer, carefully maintained and updated with style. Generous sized rooms, marble faced fireplace, finished 3rd hall story, central air. \$219,900. 764 Pierce, N. of Lincoln and W. of Woodward.

**BLOOMFIELD HILLS**

Spacious 4 bedroom family home with hardwood floors, freshly painted inside and out, new garage door, new central air, 2 fireplaces and swim and tennis club. \$148,000. 678 Weybridge, N. of Square Lake and E. of Opdyke.

**FARMINGTON HILLS**

Beautifully updated ranch overlooking private patio and yard. Finished rec room with wet bar, central air, 3 or 4 bedrooms, 2 1/2 baths and close to swim club. \$123,900. 31970 Coronet, S. of 13 Mile and W. of Orchard Lake.

**BEVERLY HILLS**

Charming ranch on a large treed lot features 3 bedrooms, fireplace family room, newly decorated eat-in kitchen with parquet floor, deck and more. \$118,500. 31125 Sheridan, S. of Beverly and E. of Pierce.

**WEST BLOOMFIELD**

Well maintained center hall brick Colonial. Formal dining room, kitchen is a gourmet's delight, family room and custom fireplace. Cozy library, 1st floor laundry, 4 bedrooms. \$199,000. 6097 Glen Eagles, N. of Walnut Lk. and W. of Farmington.

**FARMINGTON HILLS**

Delightful 2 bedroom charming ranch with wonderful kitchen-dinette opening to the den. Doorwall leads to newer deck, newer roof, siding and furnace. \$60,500. 22488 Violet, N. of Grand River and E. of Orchard Lake.

**WEST BLOOMFIELD**

Wonderful family Colonial on a quiet street. You will be delighted with the spacious room sizes, private library, large master suite and basement playroom. \$151,900. 5534 Northcote, N. of 14 Mile and W. of Middlebelt.

**BLOOMFIELD HILLS**

Impressive Colonial on 1/4 acre featuring contemporary interior, almond formica kitchen, central air and lower level. Lake privileges on Hammond Lake. \$177,900. 2275 E. Hammond Lake N. of Square Lake and E. of Middlebelt.

**WEST BLOOMFIELD**

West Bloomfield Laketfront. Custom built home with magnificent view, super kitchen, circular stairs, large wood deck, cathedral ceiling in family room and more. \$244,900. 5154 West Bloomfield Lake N. of Walnut Lake and W. of Farmington.

**FARMINGTON HILLS**

Discover this fine 3 bedroom Colonial. Neutral decor, all window treatments, sprinkler system, central air, full basement and attached side entrance garage. \$128,900. 28268 Gettysburg, N. of 12 Mile and W. of Drake.

**WEST BLOOMFIELD**

Spacious Colonial on an exceptional treed lot. Huge master bedroom and dressing area lead you to a 2nd floor deck. Newly decorated in family room and kitchen. \$179,900. 4215 Orchard Crest, N. of Maple and W. of Orchard Lake.

**TROY**

Contemporary with studio ceiling Great room, wet bar, dining room with butler's pantry, library has built-in desk and shelves. Professional landscaping. \$229,000. 5264 Cheltenham, N. of Long Lake and W. of Coolidge.

**"CALL RALPH MANUEL FOR ADDITIONAL OPEN HOUSES"**