

Century 21

TOWN & COUNTRY

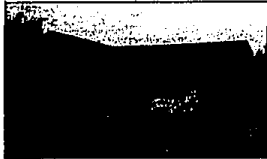
Members of: Birmingham-Bloomfield, Rochester, South Oakland County, North Oakland County and Macomb County Boards of Realtors.

- Employee Relocation Council
- International Relocation Consultants, Inc.



Century 21 Corporate Relocation Network
Approved Century 21 VIP Relocation Services

CENTURY 21 INTERNATIONAL AWARD WINNING OFFICES



WELL MAINTAINED... 4 bedroom Tri in TROY'S Sylvan Glen. Family room/fireplace, 2 1/2 baths and many updates. Close to schools and shopping. \$135,000 (09FOL) 524-1600



TROY CONDO Free standing 3 bedroom unit with fireplace, basement and kitchen appliances. Pool and clubhouse. \$80,500 (18ROU) 524-1600



EXTRA LARGE Bloomfield ranch. Four bedrooms. Walk to Seaholm or Marlan and Brother Rice. Lovely well maintained yard. Large laundry. (70MID) \$174,500. 642-8100



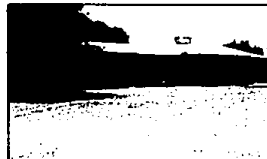
UPTOWN BIRMINGHAM, convenience and charm 3 bedrooms, hardwood floors, stained oak woodwork, 2 car detached garage. All appliances stay. (52LIN) \$78,900. 642-8100



NORTHWEST TROY Well appointed 4 bedroom home with 2 1/2 baths, library and family room. Neutral decor and the pool has a Jacuzzi spa. \$219,900 (02CON) 524-1600



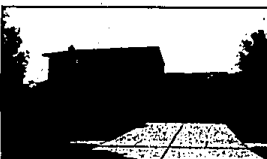
TROY Four bedroom Tri on country sized lot. Dining room and family room/fireplace. Deck, sprinklers and extra insulation. \$119,900 (80LIV) 524-1600



BRICK RANCH with finished basement on beautiful private lot in Bloomfield. Updated kitchen. Move in condition. New carpet, 2 fireplaces. (40KEN) \$178,900. 642-8100



CUSTOM BRICK ranch in the city of Franklin, set in a beautiful park like setting. Fourth bedroom and bath are in the lower walkout. (15WOO) \$329,000. 642-8100



TROY Three bedroom, 1 1/2 bath home in popular Golf Trails. 1st floor laundry, professionally landscaped, sprinklers and deck. \$124,900 (58BEA) 524-1600



WEST BLOOMFIELD Three bedroom Ranch with 2 full baths, 2 fireplace and separate "mother-in-law" quarters. Large lot/excellent location. \$152,500 (80RAW) 524-1600



CONTEMPORARY TOWNHOUSE in Bloomfield with spacious open floor plan and private atrium. Many upgrades in this sparkling clean home. (18SOU) \$148,900. 642-8100



FABULOUS NEW CONSTRUCTION in one of Birmingham's prestigious family neighborhoods, The Village, over 3200 sq. ft. of custom built quality. (44GLE) \$409,000. 642-8100



IMMEDIATE OCCUPANCY Troy Quad with 4 bedrooms, 2 1/2 baths, dining room and large country kitchen. Neutrals, patio and walk to elementary. \$119,850 (83ANV) 524-1600



PRIME AREA! Lovely French Colonial with 4 bedrooms, 3 baths, library and 1st floor laundry. Family room with wet bar and fireplace. Central air and sprinklers. \$225,000 (81LAN) 524-1600



BLOOMFIELD COUNTRY ESTATE. Restored home on 2 peaceful, wooded acres, overlooking pond. Large rooms, 2 stone fireplaces and much more. (80HAD) \$248,000. 642-8100



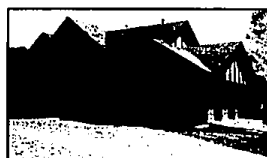
SECLUDED LOT in prestigious neighborhood with Bloomfield Hills schools. Over 2850 sq. ft. 3 car garage. 27' bright formica kitchen. New Construction! (84PRI) \$425,000. 642-8100



NEW HOME IN ORION...LAKEFRONT! 3 level home with 1000 SF dock, finished walk-out & 4 bedrooms/2 1/2 baths. Family room/fireplace and large lot. \$149,900 (57JOS) 524-1600



TREED HALF ACRE! Spacious three bedroom home with 2 1/2 baths and a 23'x23' family room. Updated kitchen, some appliances stay and patio. \$132,555 (78CAN) 524-1600



ENGLISH TUDOR on wooded grounds to River. Located in Bingham Farms. Womanized deck across entire rear of home. Notice the Garden room! (00BRI) \$359,000. 642-8100



NEW CONSTRUCTION, The Village. Over 3000 sq. ft. of custom built quality by one of the area's finest builders. Enormous entry foyer. (88WES) \$399,900. 642-8100



LAKE PRIVILEGES Custom 3 bedroom home with 2 1/2 baths, dining room, finished basement and central air. Large lot, Florida room and LAND CONTRACT TERMS! \$137,900 (58SOU) 524-1600



WEST BLOOMFIELD Executive Tri in tree setting. 3 bedrooms, 2 1/2 baths, newer appliances and storage space. Patio, newer carpet and much more. \$148,500 (33CHE) 524-1600



NEWER, DECORATOR PERFECT contemporary on 1/4 acre wooded lot. Great Room with marble fireplace, skylights. Formica kitchen. Just Gorgeous. (918UD) \$259,900. 642-8100



SPRAWLING BRICK SOUTHFIELD ranch, open floor plan, large beautifully landscaped lot. Circle drive, first floor laundry room. Birmingham Schools. (05THI) \$83,500. 642-8100

4820 Rochester Road
Troy, MI 48098
524-1600
Hrs.: Weekdays 9-9
Saturday 9-5
Sunday 10-5

1105 S. Adams
Birmingham, MI 48011
642-8100
Hrs.: Weekdays 9-8
Saturday 9-5
Sunday 10-5

Director of Relocation Services,
Linda Scope
Local: 524-1600
In Michigan: 800-648-7359
Out-of-State: 800-448-5817

